

Product datasheet for **RG217012**

ARL4 (ARL4A) (NM_005738) Human Tagged ORF Clone

Product data:

Product Type: Expression Plasmids
Product Name: ARL4 (ARL4A) (NM_005738) Human Tagged ORF Clone
Tag: TurboGFP
Symbol: ARL4
Synonyms: ARL4
Mammalian Cell Selection: Neomycin
Vector: pCMV6-AC-GFP (PS100010)
E. coli Selection: Ampicillin (100 ug/mL)
ORF Nucleotide Sequence: >RG217012 representing NM_005738
 Red=Cloning site Blue=ORF Green=Tags(s)

TTTTGTAATACGACTCACTATAGGGCGCCGGGAATTCGTCGACTGGATCCGGTACCGAGGAGATCTGCC
 GCC**CGATCGCC**

ATGGGGAATGGGCTGTCAGACCAGACTTCTATCCTGTCCAACCTGCCTTCATTTTCAGTCTTTCCACATTG
 TTATTCTGGGTTGGACTGTGCTGGAAAGACAAGTCTTATACAGGCTGCAGTTCAATGAATTTGTAAA
 TACCGTACCTACCAAAGGATTTAACTGAGAAAATTAAGGTAACTTGGGAAATTTAAAACAGTCACT
 TTTCACTTCTGGGATGTAGGTGGTCAGGAGAAATTAAGGCCACTGTGGAAGTCATATACCAGATGCACAG
 ATGGCATTGTATTTGTTGTGGACTCTGTTGATGTCGAAAGGATGGAAGAAGCCAAAACCTGAACCTCACAA
 AATAACTAGGATATCAGAAAATCAGGGAGTCCCTGACTTATAGTTGCTAACAAACAAGATTTGAGGAAC
 TCATTGCACTTTTCAGAAATTGAGAAATGTTAGCAATGGGTGAAGTGAAGTCACTCACTCCTTGGCATT
 TGCAGCCTACCTGTGCAATCATAGGAGATGGCCTAAAGGAAGGACTTGAGAAACTACATGATATGATCAT
 TAAAAGAAGAAAATGTTGCGGCAACAGAAAAGAAAAGA

ACGCGTACGCGGCCGCTCGAG - GFP Tag - GTTTAA

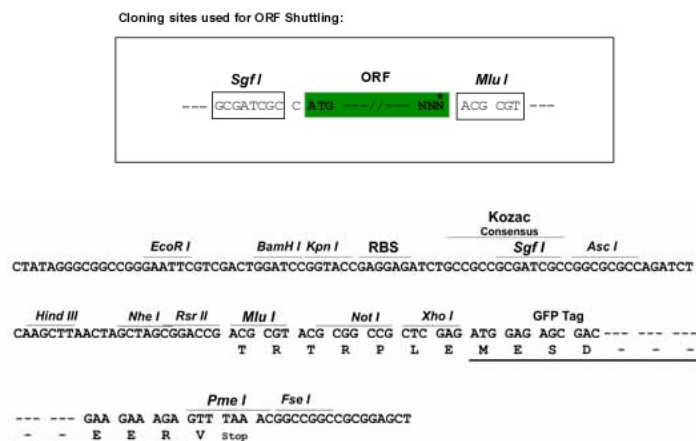
Protein Sequence: >RG217012 representing NM_005738
 Red=Cloning site Green=Tags(s)

MGNGLSDQTSILSNLPSFQSFHIVILGLDCAGKTTVLRYLQFNEFVNTVPTKGFNTEKIKVTLGNSKTVT
 FHFWDVGGQEKLRPLWKS YTRCTDGI VVDSVDVERMEEAKTELHKITRISENQGVPLIVANKQDLRN
 SLSLSEIEKLLAMGELSSSTPWHLQPTCAIIGDGLKEGLEKLDHMIKRRKMLRQKQKKR

TRTRPLE - GFP Tag - V

Restriction Sites: Sgfl-MluI



Cloning Scheme:


ACCN: NM_005738

ORF Size: 600 bp

OTI Disclaimer: The molecular sequence of this clone aligns with the gene accession number as a point of reference only. However, individual transcript sequences of the same gene can differ through naturally occurring variations (e.g. polymorphisms), each with its own valid existence. This clone is substantially in agreement with the reference, but a complete review of all prevailing variants is recommended prior to use. [More info](#)

OTI Annotation: This clone was engineered to express the complete ORF with an expression tag. Expression varies depending on the nature of the gene.

Components: The ORF clone is ion-exchange column purified and shipped in a 2D barcoded Matrix tube containing 10ug of transfection-ready, dried plasmid DNA (reconstitute with 100 ul of water).

Reconstitution Method:

1. Centrifuge at 5,000xg for 5min.
2. Carefully open the tube and add 100ul of sterile water to dissolve the DNA.
3. Close the tube and incubate for 10 minutes at room temperature.
4. Briefly vortex the tube and then do a quick spin (less than 5000xg) to concentrate the liquid at the bottom.
5. Store the suspended plasmid at -20°C. The DNA is stable for at least one year from date of shipping when stored at -20°C.

RefSeq: [NM_005738.5](#)

RefSeq Size: 3162 bp

RefSeq ORF: 603 bp

Locus ID: 10124

UniProt ID: [P40617](#)

Cytogenetics: 7p21.3

