

Product datasheet for **RG216987**

GRSF1 (NM_001098477) Human Tagged ORF Clone

Product data:

Product Type:	Expression Plasmids
Product Name:	GRSF1 (NM_001098477) Human Tagged ORF Clone
Tag:	TurboGFP
Symbol:	GRSF1
Mammalian Cell Selection:	Neomycin
Vector:	pCMV6-AC-GFP (PS100010)
E. coli Selection:	Ampicillin (100 ug/mL)
ORF Nucleotide Sequence:	>RG216987 representing NM_001098477 Red=Cloning site Blue=ORF Green=Tags(s)

TTTTGTAATACGACTCACTATAGGGCGGCCGGAATTCGTCGACTGGATCCGGTACCGAGGAGATCTGCC
GCC**CGATCGCC**

ATGGAAGATGTGCTTAACCTTTTTTCAGACTGCAGAATCCGCAACGGTGAGAATGGAATACATTTCTCC
TAAACAGAGATGGGAAACGAAGGGTGATGCCTTAATTGAAATGGAGTCAGAGCAGGATGTGCAGAAAGC
CTTAGAGAAGCACCAGCATGTACATGGGCCAGCGGTATGTGGAAGTATATGAGATAAACAATGAAGATGTG
GATGCCTTAATGAAGAGCTTGCAGGTCAAATCTCGCCTGTGGTAAATGATGGTGTGGTTCGTTTGAGAG
GACTTCTTATAGTTGCAATGAGAAAGACATTGTAGACTTCTTTCAGGACTGAATATAGTTGACATTAC
TTTTGTGATGGACTATAGAGGGAGGCGAAAAACAGGGGAAGCCTATGTGCAATTTGAAGAACCAGAAATG
GCCAACCAAGCCCTGTTGAAACACAGGGAAGAAATTTGTAATCGATACATCGAGATATTTCCAAGCAGAA
GGAATGAAGTTCGAACACATGTCGGTCTTATAAGGGAAGAAAAATCGCATCTTTTCTACTGCTAAGTA
TATAACTGAGCCAGAAATGGTCTTTGAAGAACATGAAGTAAATGAGGATATTCAACCCATGACAGCTTTT
GAAAGTGAGAAGGAAATAGAATTGCCTAAGGAGGTGCCAGAAAAGCTTCCAGAGGCTGCTGATTTGGAA
CTACGTCTTCTGCATTTGTCCACATGAGAGGATTACCTTTCCAAGCCAATGCCCAAGACATTATAAA
CTTTTTTGCTCCACTCAAGCCTGTTAGAATCACCATGGAATACAGCTCCAGTGGGAAAGGCCACTGGAGAA
GCTGATGTGCACTTTGAGACCCATGAGGATGCTGTTGCAGCGATGCTCAAGGATCCGTCCACGTTTCATC
ATAGGTATATTGAACTGTTCTGAATTCATGTCCAAAAGGAAAA

ACGCGTACGCGGCCGCTCGAG - GFP Tag - GTTTAA



[View online »](#)

Protein Sequence: >RG216987 representing NM_001098477
Red=Cloning site Green=Tags(s)

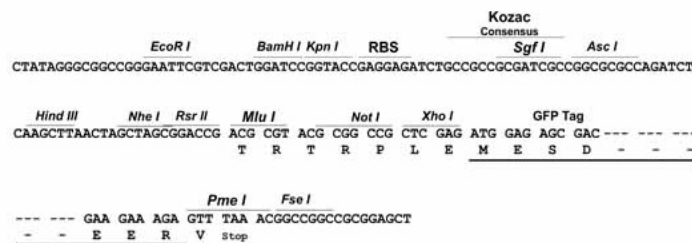
MEDVLNFFSDCRIRNGENGIHFLNLRDGKRRGDALIEMESEQDVQKALEKHRMYMGQRYVEVYEINNEDV
 DALMKSLQVKSSPVVNDGVVRLRGLPYSCNEKDIVDFAGLNIVDITFVMDYRGRRTGEAYVQFEEPEM
 ANQALLKHREEIGNRYIEIFPSRRNEVRTHVGSYKGGKIASFPTAKYITEPEMVFEHEVNEDIQPMATF
 ESEKEIELPKEVPEKLEAADF GTTSSLHFVHMRGLPFQANAQDIINFFAPLKPVRITMEYSSSGKATGE
 ADVHFETHEDAVAAMLKDRSHVHRYIELFLNSCPKKG

TRTRPLE - GFP Tag - V

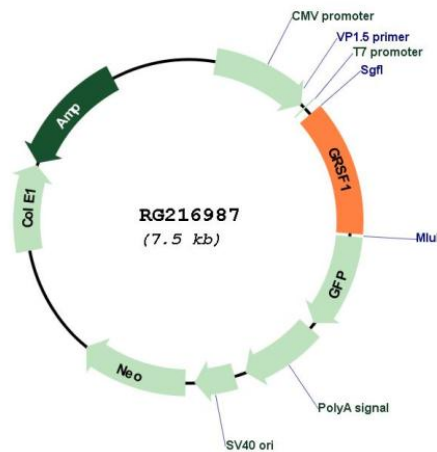
Restriction Sites: SgfI-MluI

Cloning Scheme:

Cloning sites used for ORF Shutting:



Plasmid Map:



ACCN: NM_001098477

ORF Size: 954 bp

OTI Disclaimer:	The molecular sequence of this clone aligns with the gene accession number as a point of reference only. However, individual transcript sequences of the same gene can differ through naturally occurring variations (e.g. polymorphisms), each with its own valid existence. This clone is substantially in agreement with the reference, but a complete review of all prevailing variants is recommended prior to use. More info
OTI Annotation:	This clone was engineered to express the complete ORF with an expression tag. Expression varies depending on the nature of the gene.
Components:	The ORF clone is ion-exchange column purified and shipped in a 2D barcoded Matrix tube containing 10ug of transfection-ready, dried plasmid DNA (reconstitute with 100 ul of water).
Reconstitution Method:	<ol style="list-style-type: none">1. Centrifuge at 5,000xg for 5min.2. Carefully open the tube and add 100ul of sterile water to dissolve the DNA.3. Close the tube and incubate for 10 minutes at room temperature.4. Briefly vortex the tube and then do a quick spin (less than 5000xg) to concentrate the liquid at the bottom.5. Store the suspended plasmid at -20°C. The DNA is stable for at least one year from date of shipping when stored at -20°C.
RefSeq:	NM_001098477.2
RefSeq Size:	6482 bp
RefSeq ORF:	957 bp
Locus ID:	2926
UniProt ID:	Q12849
Cytogenetics:	4q13.3
Gene Summary:	The protein encoded by this gene is a cellular protein that binds RNAs containing the G-rich element. The protein is localized in the cytoplasm, and has been shown to stimulate translation of viral mRNAs in vitro. Multiple transcript variants encoding different isoforms have been found for this gene. [provided by RefSeq, Jul 2008]