

Product datasheet for **RG216965**

TRPM6 (NM_017662) Human Tagged ORF Clone

Product data:

Product Type:	Expression Plasmids
Product Name:	TRPM6 (NM_017662) Human Tagged ORF Clone
Tag:	TurboGFP
Symbol:	TRPM6
Synonyms:	CHAK2; HMGX; HOMG; HOMG1; HSH
Mammalian Cell Selection:	Neomycin
Vector:	pCMV6-AC-GFP (PS100010)
E. coli Selection:	Ampicillin (100 ug/mL)
ORF Nucleotide Sequence:	>RG216965 representing NM_017662 Red=Cloning site Blue=ORF Green=Tags(s)

TTTTGTAATACGACTCACTATAGGGCGGCCGGAATTCGTCGACTGGATCCGGTACCGAGGAGATCTGCC
GCC**CGATCGCC**

ATGAAAGAACAACCTGTCTTGGAGCGCTTGCAGTCCCAGAAATCCTGGATTAAAGGAGTATTTGACAAGA
GAGAATGTAGCACAATCATACCCAGCTCAAAAAATCCTCACAGATGTACTCCAGTATGCCAAGTCTGCCA
GAATTTAATCAGGTGTTACTGTGGCCGACTGATTGGAGACCATGCTGGGATAGATTATTCCTGGACCATC
TCAGCTGCCAAGGGTAAAGAAAGTGAACAATGGTCTGTTGAAAAGCACACAACGAAAAGCCCAACAGATA
CTTTTGGCAGGATTAATTTCCAAGATGGAGAGCACCCATCATGCCAAGTATATTAGAACTTCTTATGA
TACAAAATGGATCATCTGTTACATTTAATGTTGAAAAGAGTGGAAAATGGAAGTCCCAAGCTTGTGATC
TCAGTCCATGGGGCATCCAGAACCTTACTATGCCCTCTAAATTTAAAGAGATTTTCAGCCAAGGTTTGG
TTAAAGCTGCAGAGACAACAGGAGCGTGGATAATAACTGAAGGCATCAATACAGGAGTGTCCAAGCATGT
TGGGGATGCCTTGAAATCCCATTCTCATTCTTGGAGAAAAATCTGGACAGTTGGAATCCCTCCTTGG
GGTGTCAATGAGAACCAGAGAGACCTTATTGAAAAAGATGTGGTGTGCCTGTACCAGACTCTGGATAACC
CCCTCAGCAAGCTCACAACACTCAACAGCATGCACTCGCACTTCATCCTGTCTGATGATGGGACCGTGGG
CAAGTATGGAAATGAAATGAAGCTCAGAAGGAACCTGGAGAAGTACCTCTCTCTGCAGAAAATACACTGC
CGCTCAAGACAAGGCGTCCGGTCTGGGGCTGGTGGTGAAGGCGGTCCCAACGTCATCCTGTCAAGTGT
GGGAGACTGTCAAGGACAAGGACCCAGTGGTGGTGTGTGAGGGTACAGGTAGGGCGGCTGACCTCCTGGC
CTTCACACACAAAACACTGGCAGATGAAGGGATGCTGCGACCTCAGGTGAAAGAGGAGATCATCTGCATG
ATTCAGAACACTTTCAACTTTAGTCTTAAACAGTCCAAGCACCTTTTCCAAATCTAATGGAGTGTATGG
TTCACAGGGATTGTATTACCATATTTGATGCTGACTCTGAAGAGCAGCAAGACCTGGACTTAGCAATCCT
AACAGCTTTGCTGAAGGGCACAAATTTATCAGCGTCAGAGCAATTAATCTGGCAATGGCTTGGGACAGG
GTGGACATTGCCAAGAAACATATCTAATTTATGAACAACACTGGAAGCCTGATGCCCTGGAACAAGCAA
TGTCAGATGCTTTAGTGTGGATCGGGTGGATTTTGTGAAGCTCTAATAGAATATGGAGTGAACCTCCA
TCGCTTTCTTACCATCCCTCGACTGGAAGAGCTCTACAATACAAAACAAGGACCTACTAATACACTCTTG



[View online »](#)

CATCATCTCGTCCAAGATGTGAAACAGGAAAAGTCTATAGTCCTTCATAATCAAGGAAGAAGTCAAAAAG
 AACAAAATGTATCAGATGACCCTGAGTCTACTGGCTTTCTTTACCTTACAATGACCTGCTGGTTTGGGC
 TGTGCTGATGAAAAGGCAGAAGATGGCTATGTTCTTCTGGCAGCATGGAGAGGAGGCCACGGTTAAAGCC
 GTGATTGCGTGTATCCTCTACCGGGCAATGGCCCATGAAGCTAAGGAGAGTCACATGGTGGATGATGCCT
 CAGAAGAGTTGAAGAATTACTCAAACAGTTTGGCCAGCTGGCTCTGGACTTGTGGAGAAGGCATTCAA
 GCAGAATGAGCGCATGGCCATGACGCTGTTGACGTATGAACTCAGGAAGTGGAGCAATTCGACACTGCCTT
 AAATGGCCGTGTCGGGAGGATTACGACCCTTTGTTTCCACATACTGTACCCAGATGCTACTGACAGACA
 TGTGGATGGGGAGGCTGAAAATGAGGAAAACTTTGGTTAAAGATTATTATAAGCATTATTTTACCACC
 CACCATTTTGACACTGGAATTTAAAAGCAAAGCTGAGATGTCACATGTTCCCCAGTCCCAGGACTTCCAA
 TTTATGTGGTATTACAGTGACCAGAACGCCAGCAGTTCCAAAGAAAAGTGTTCTGTGATGGCGTATTTGG
 CATTCTCATGCTGTTCACTTACACCGTGTGGTGGAGATGCAGCCCCAGCCAGCGTGCAGGAGTGGCT
 TGTTAGCATTTACATCTTACCAATGCTATTGAGGTGGTCAGGGAGATCTGTATTTACAGAACCTGGGAAG
 TTTACCCAAAAGGTGAAGGTATGGATTAGTGAGTACTGGAACTTAACAGAAAAGTGGCCATTGGCCTGT
 TTTGAGCTGGCTTCGTCCTTCGATGGGGTGACCCTCCTTTTACACAGCGGGAAGACTGATCTACTGCAT
 AGACATCATATTCTGGTCTCACGGCTCCTGGACTTCTTTGCTGTGAATCAACATGCAGGTCATATGTG
 ACCATGATTGCAAAAATGACAGCAAAACATGTTCTATATTGTGATCATCATGGCCATAGTCCCTGCTGAGCT
 TTGGAGTGGCACGCAAGGCCATCCTTTCCGCAAAAAGAGCCACCATCTGGAGTCTAGCTCGAGATATTGT
 ATTTGAGCCATACTGGATGATATACGGAGAAGTCTATGCTGGAGAAAATAGATGTTTGTTCAGCCAGCCA
 TCCTGCCCTCCTGGTCTTTTCTTACTCCATTCTTGAAGCTGTCTACCTCTTCGTGCAATATATCATCA
 TGGTGAACCTGTTGATTGCTTTCTTCAACAACGTTTACTTAGATATGGAATCCATTTCAAATAACCTGTG
 GAAATACAACCGCTATCGCTACATCATGACCTACCACGAGAAGCCCTGGCTGCCCCACCTCTCATCCTG
 CTGAGCCACGTGGGCCTTCTCCTCCGCCCTGTGCTGCATCGAGCTCCTCACGACCAAGAAGAGGGGTG
 ACGTTGGATTAAGTCTACCTCAGTAAGGAGGATCTGAAAAAAGTTCATGATTTTGGAGGAGTGCCTG
 GGAAAAATACTTCCATGAGAAGATGGAAGATGTGAATTGTAGTTGTGAGGAACGAATCCGAGTGACATCA
 GAAAGGGTTACAGAGATGTACTTCCAGCTGAAAGAAAATGAATGAAAAGGTGCTTTTATAAAGGACTCCT
 TACTGTCTTTGGACAGCCAGGTGGGACACCTGCAGGATCTCTGCCCCTGACTGTGGATACCCTGAAAGT
 CCTTTCTGCTGTTGACACTTTGCAAGAGGATGAGGCTCTCCTGGCCAAGAGAAAAGCATTCTACTTGCAAA
 AAAGTCCCCACAGCTGGAGCAATGTCTCTGTGCAGAGGTTCTAGGCAGCATGGAGATCGCTGGAGAGA
 AGAAAATACAGTATTATAGCATGCCCTCTTCTTTGCTGAGGAGCCTGGCTGGAGGCCGCATCCCCAAG
 AGTGCAGAGGGGGGCACTTCTTGAGATTACAAACAGTAAAAGAGAGGCTACAAAATGAAGAAATGACCAG
 GAAAGGCAAGAAACACAAAGTAGTATAGTGGTTTCTGGGGTGTCTCCTAACAGGCAAGCACACTCAAAGT
 ATGGCCAGTTTCTTCTGCTCCCTCTAATCTAAAGCGAGTTCTTTTTCAGCAGAAAAGTGTCTTGCCTCT
 GTCCAGACCCTCTGTGCCAGATGTGCTGGCAACTGAACAGGACATCCAGACTGAGGTTCTTGTTCATCTG
 ACTGGGCAGACCCAGTTGTCTCTGACTGGGCATCAGTGGATGAACCCAAAGGAAAAGCACGAGCCTATTG
 CTCACTTACTGGATGGACAAGACAAGGCAGAGCAAGTGTACCCACTTTGAGTTGCACACCTGAACCCAT
 GACAATGAGTCCCTCTTTCCCAAGCCAAGATCATGCAAACTGGAGGTGGATATGTAAACTGGGCATTT
 TCAGAAGGTGATGAACTGGTGTGTTTAGCATCAAGAAAAAGTGGCAACCTGCTTGGCCCTCCTTGTG
 ACAGTGATTCCTCTCGGAGTGAACAGCACCAGAAGCAGGCCAGGACAGCTCCCTATCTGATAACTCAAC
 AAGATCGGCCAGAGTAGTGAATGCTCAGAGGTGGGACCATGGCTTCAGCCAAACACATCCTTTTGGATC
 AATCCTCTCCGCAGATACAGGCCCTTCGCTAGGAGTCATAGTTTTAGATTCCATAAGGAGGAGAAAATTGA
 TGAAGATCTGTAAGATTAATAATCTTTACAGGCTCTTTCAGAAAATAGGGCAGGGAGCATGGGTCAAAGCGAA
 AATGCTAACCAAGACAGGAGACTGTCAAAGAAAAAGAAGAATACTCAAGGACTCCAGGTGCCAATCATA
 ACAGTCAATGCCTGCTCTCAGAGTGACCAGTTGAATCCAGAGCCAGGAGAAAAACAGCATCTCTGAAGAGG
 AGTACAGCAAGAAGTGGTTCACAGTGTCCAAATTTAGTACACAGGTGTAGAACCTTACATACATCAGAA
 AATGAAAAGTAAAGAAATGGACAATGTCTATACAAATCAGTGATTACCTAAAGCAGTCTCAAGAGGAT
 CTCAGCAAAAAGTCTTTGTGGAATTCAGGAGCACCAACCTCAATAGGAAGTCCCTGCTGAAAAGTTCAA
 TTGGAGTTGACAAGATCTCAGCCTCCTTAAAAGCCCTCAAGAGCCTCACCATCATTATTCAGCCATTGA
 AAGGAATAATTTAATGAGGCTTTCTCAGACCATACCATTTACACCAGTCCAAGTGTTCAGGAGAGAA
 ATAAGTGTCTACAGGTTGGAGGAGAGTCCCCTTTAAACCTTGATAAAAGCATGTCTCTTGGTCTCAGC
 GTGGGAGAGCGGCAATGATCCAGGTATTGTCCCAGAGGAGATGGATGGGGGCTCCGTAAGACTATGAG
 AGTCGTGACACTTGGTCTGAGGATGACATTCTCAAGCCGGGACAAGTTTTTCATTGTCAAGTCTTTTCT
 CCTGAGTTGTGCGGACATGGCATAAAAATCTTCCAGGAGAGCACTGTGCTTCATCTTTGCCTCAGGGAAA

TTCAACAACAAAGAGCTGCTCAAAAATTGATCTATACCTTCAACCAAGTAAACCCACAAACCATACCTA
CACACCAAGGTTCTGGAAGTTTTCTTAATCTACTGCCATTAGCCCAACCAAGTGGTTGACCATGAGAAG
TATATGACAGGGGAGTCCGGAAGTATAACAACAACAATGGTGATGAAATCACCCCAACCAACCCCTGG
AGGAGCTGATGTTGGCTTCTCTCACTGGACCTATGAGTACACTCGGGGAGAGCTGCTGGTTTTAGATTT
GCAAGGTGTTGGAGAAAATTTGACAGATCCATCTGTTATAAAACCTGAAGTCAACAATCAAGAGGAATG
GTGTTTGGACCGCCAATTTGGGGGAAGATGCAATTAGAACTTCATTGCAAAACATCATTGTAACCTCT
GCTGCCGAAGCTCAAACTCCCGGATTTAAAAGAAATGACTATCCCTGAAAGGATAAATCCACCTT
TGGACTTGAGATAAAAATAGAATCAGCTGAGGAGCCTCCAGCAAGGGAGACGGGTAGAAATCCCCAGAA
GATGATATGCAACTA

ACGCGTACGCGGCCGCTCGAG – GFP Tag – GTTTAA

Protein Sequence:

>RG216965 representing NM_017662

Red=Cloning site Green=Tags(s)

MKEQPVLERLQSQKSWIKGVFDKRECSTIIPSSKNPHRCTPVCQVCQNLIRCYCGRLIGDHAGIDYSWTI
SAAKGKESEQSVEKHHTKSPTDTFGTINFDGEHTHHAKYIRTSYDTKLDHLLHMLKWKMLPKLVI
SVHGGIQNFTMPSKFKEIFSQGLVKAETTGAWIITEGINTGVSKHVGDAKSHSSHSLRKIWTVGIPPW
GVIENQRDLIGKDVVCLYQTLDNPLSKLTLSNMHSFILSDDGTGKYGNEMKLRNLEKYL SLQKIHC
RSRQGVVGLVVEGGPNVILSVWETVKDKDPVVVCEGTGRAADLLAFTHKHLADEGMLRPQVKEEIIICM
IQNTFNFSLKQSKHLFQILMECMVHRDCITIFDADSEEQQDLDLAILTALLKGTNL SASEQLNLAMAWDR
VDIAKKHILIEYQHWKPDALDAQMSDALVMDRVDFVKLLIEYGVNLHRFLTIPRLEELYNTKQGPNTLL
HHLVQDVKQEKSIVLHKSRRKKSKEQNVSDPESTGFLYPYNDLLVWAVLMKRQKMMAMFFWQHGEAATVKA
VIACILYRAMAHEAKESHMVDASEELKNYSKQFGQLALDLEKAFKQNERMAMTLLTYELRNWNSSTCL
KLAVSGGLRPFVSHCTQMLLDMWMLRMLKMRKNSWLKIIISIIIPPTILTLEFKSKAEMSHVPQSQDFQ
FMWYSDQNASSKESASVMAYLAFMLFTYTVL VEMQPQPSVQEWLVSIYIFTNAIEVVREICISEPGK
FTQKVKVWVISEYWNLTETVAIGLFSAGFVLRWGDPPFHTAGRLIYCIDIIWFWSRLDDFFAVNQHAGPYV
TMIAKMTANMFYIVIMAI VLLSFGVARKAILSPKEPPSWSLARDIVFEPYWMIYGEVYAGEIDVCSQP
SCPPGSFLTPFLQAVYLFVQYIIMVNL IAFNNVYLDMESINNLWKYNRYRYIMTYHEKPWLPPLIL
LSHVGLLLRRLCCHRAPHDQEEGDVGLKLYL SKEDLKKLHDFEEQCVEKYFHEKMEDVNCSEERIRVTS
ERVTEMYFQLKEMNEKVSFIKDSLLSLDSQVGHQLQDLSALTVDTLKVLSAVDTLQDEALLAKRKHSTCK
KLPHSWSNVICAEVLGSMEIAGEKKYQYYSMPSSLLRSLAGRHPPRVQRGALLEITNSKREATNVRNDQ
ERQETQSSIVVSGVSPNRQAHSKYGFLLVPSNLKRVPFSAETVLP LSRPSVPDVLATEQDIQTEVLVHL
TGQTPVSDWASVDEPKEKHEPIAHLLDGQDAEQVLP LPTLSCTPEPMTMSSPLSQAQIMQTGGGYVNWAF
SEGDETVGFSIKKKWQTCLPSTCDSRSEQHQAQDSSLSDNSTRSAQSSECSEVGPWLQPNTSFWI
NPLRRYRPFARSHSFRFHKEEKLKICKIKNLSGSEIGQGAWVKAKMLTKDRRLSKKKKNTQGLQVPII
TVNACSQSDQLNPEPGENSISEEEYSKNWFTVSKFSHTGVEPYIHQKMKKEIGQCAIQISDYLKQSQED
LSKNSLWNSRSTNLNRNLLKSSIGVDKISASLSPQEPHHYSAIERNNLMRLSQTIPFTPVQLFAGEE
ITVYRLEESSPLNLDKSMSSWSQRGAAMIQVLSREEMDGLRKAMRVVSTWSEDDILKPGQVIVKSFL
PEVVRTWHKIFQESTVLHLCLREIQQRAAQKLIYTFNQVKPQTIPYTPRFLEVFLIYCHSANQWLTIK
YMTGEFRKYNNGDEITPTNTLEELMLAFSHWYETRGELLVLDLQGVGENLDP SVIKPEVKQSRGM
VFGPANLGEDAIRNFIKHHNCSCCRKLPDLKRNDSYPERINSTFGLKIESAEPPARETGRNSPE
DDMQL

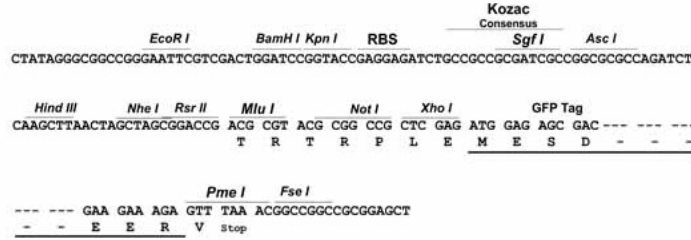
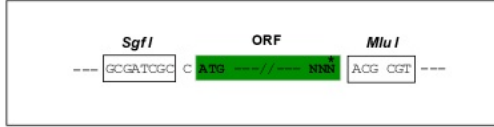
TRTRPLE – GFP Tag – V

Restriction Sites:

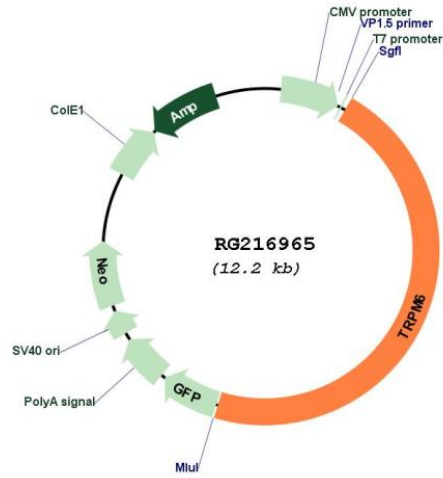
Sgfl-Mlul

Cloning Scheme:

Cloning sites used for ORF Shutting:



Plasmid Map:



ACCN: NM_017662
 ORF Size: 6066 bp

OTI Disclaimer:	The molecular sequence of this clone aligns with the gene accession number as a point of reference only. However, individual transcript sequences of the same gene can differ through naturally occurring variations (e.g. polymorphisms), each with its own valid existence. This clone is substantially in agreement with the reference, but a complete review of all prevailing variants is recommended prior to use. More info
OTI Annotation:	This clone was engineered to express the complete ORF with an expression tag. Expression varies depending on the nature of the gene.
Components:	The ORF clone is ion-exchange column purified and shipped in a 2D barcoded Matrix tube containing 10ug of transfection-ready, dried plasmid DNA (reconstitute with 100 ul of water).
Reconstitution Method:	<ol style="list-style-type: none">1. Centrifuge at 5,000xg for 5min.2. Carefully open the tube and add 100ul of sterile water to dissolve the DNA.3. Close the tube and incubate for 10 minutes at room temperature.4. Briefly vortex the tube and then do a quick spin (less than 5000xg) to concentrate the liquid at the bottom.5. Store the suspended plasmid at -20°C. The DNA is stable for at least one year from date of shipping when stored at -20°C.
RefSeq:	NM_017662.3 , NP_060132.3
RefSeq Size:	8429 bp
RefSeq ORF:	6069 bp
Locus ID:	140803
UniProt ID:	Q9BX84
Cytogenetics:	9q21.13
Protein Families:	Druggable Genome, Ion Channels: Transient receptor potential, Protein Kinase, Transmembrane
Gene Summary:	This gene is predominantly expressed in the kidney and colon, and encodes a protein containing an ion channel domain and a protein kinase domain. It is crucial for magnesium homeostasis, and plays an essential role in epithelial magnesium transport and in the active magnesium absorption in the gut and kidney. Mutations in this gene are associated with hypomagnesemia with secondary hypocalcemia. Alternatively spliced transcript variants encoding different isoforms have been noted for this gene. [provided by RefSeq, Apr 2010]