

## Product datasheet for **RG216962**

### **ZNF706 (NM\_001042510) Human Tagged ORF Clone**

#### Product data:

**Product Type:** Expression Plasmids  
**Product Name:** ZNF706 (NM\_001042510) Human Tagged ORF Clone  
**Tag:** TurboGFP  
**Symbol:** ZNF706  
**Synonyms:** HSPC038; PNAS-106; PNAS-113  
**Mammalian Cell Selection:** Neomycin  
**Vector:** pCMV6-AC-GFP (PS100010)  
**E. coli Selection:** Ampicillin (100 ug/mL)  
**ORF Nucleotide Sequence:** >RG216962 representing NM\_001042510  
Red=Cloning site Blue=ORF Green=Tags(s)

TTTTGTAAATACGACTCACTATAGGGCGGCCGGAATTCGTCGACTGGATCCGGTACCGAGGAGATCTGCC  
 GCCCGATCGCC

ATGGCTCGTGGACAGCAGAAAAATTCAGTCTCAGCAGAAAAATGCCAAAAGCAAGCTGGACAAAAGAAGA  
 AACAAGGACATGACCAAAAGGCTGCTGCCAAAGCTGCCTTAATATATACCTGCACTGTCTGTAGGACACA  
 AATGCCAGACCCTAAGACCTTCAAGCAGCACTTTGAGAGCAAGCATCCTAAGACTCCACTTCCTCCAGAA  
 TTAGCTGATGTTTCAGGCA

AGCGGACCGACGCGTACGCGGCCGCTCGAG - GFP Tag - GTTTAA

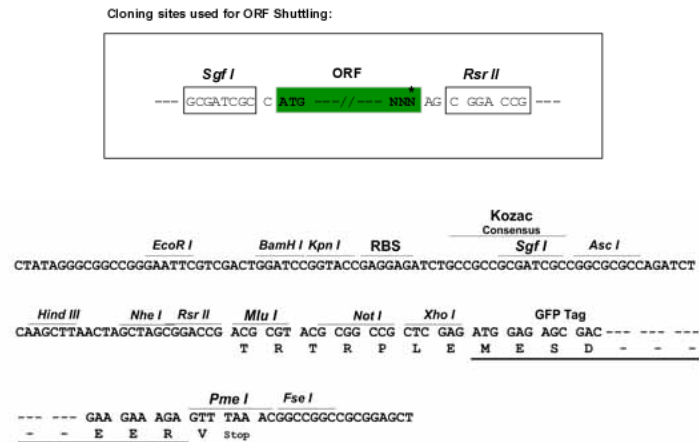
**Protein Sequence:** >RG216962 representing NM\_001042510  
Red=Cloning site Green=Tags(s)  
 MARGQQKIQSQQKNAKKQAGQKKKQGHQKAAAKAALIYCTVCRTQMPDPKTFKQHFESKHPKTPLPPE  
 LADVQA

SGPTRRRLE - GFP Tag - V

**Restriction Sites:** SgfI-RsrII


[View online »](#)

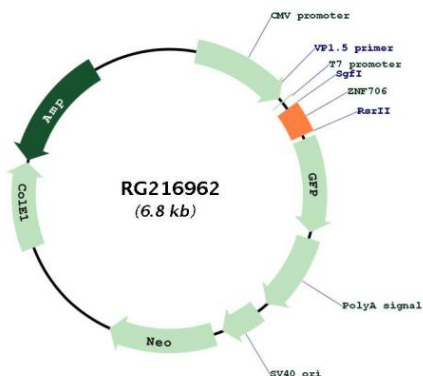
Cloning Scheme:



ACCN:	NM_001042510
ORF Size:	228 bp
OTI Disclaimer:	The molecular sequence of this clone aligns with the gene accession number as a point of reference only. However, individual transcript sequences of the same gene can differ through naturally occurring variations (e.g. polymorphisms), each with its own valid existence. This clone is substantially in agreement with the reference, but a complete review of all prevailing variants is recommended prior to use. <a href="#">More info</a>
OTI Annotation:	This clone was engineered to express the complete ORF with an expression tag. Expression varies depending on the nature of the gene.
Components:	The ORF clone is ion-exchange column purified and shipped in a 2D barcoded Matrix tube containing 10ug of transfection-ready, dried plasmid DNA (reconstitute with 100 ul of water).
Reconstitution Method:	<ol style="list-style-type: none"> <li>1. Centrifuge at 5,000xg for 5min.</li> <li>2. Carefully open the tube and add 100ul of sterile water to dissolve the DNA.</li> <li>3. Close the tube and incubate for 10 minutes at room temperature.</li> <li>4. Briefly vortex the tube and then do a quick spin (less than 5000xg) to concentrate the liquid at the bottom.</li> <li>5. Store the suspended plasmid at -20°C. The DNA is stable for at least one year from date of shipping when stored at -20°C.</li> </ol>
RefSeq:	<a href="#">NM_001042510.1</a> , <a href="#">NP_001035975.1</a>
RefSeq Size:	2870 bp

RefSeq ORF:	231 bp
Locus ID:	51123
UniProt ID:	<a href="#">Q9Y5V0</a>
Cytogenetics:	8q22.3
Gene Summary:	Transcription repressor involved in the exit of embryonic stem cells (ESCs) from self-renewal. Acts by repressing expression of KLF4.[UniProtKB/Swiss-Prot Function]

## Product images:



Circular map for RG216962