

## Product datasheet for **RG216920**

### LTBP4 (NM\_001042545) Human Tagged ORF Clone

#### Product data:

Product Type:	Expression Plasmids
Product Name:	LTBP4 (NM_001042545) Human Tagged ORF Clone
Tag:	TurboGFP
Symbol:	LTBP4
Synonyms:	ARCL1C; LTBP-4; LTBP4L; LTBP4S
Mammalian Cell Selection:	Neomycin
Vector:	pCMV6-AC-GFP (PS100010)
E. coli Selection:	Ampicillin (100 ug/mL)
ORF Nucleotide Sequence:	>RG216920 representing NM_001042545 Red=Cloning site Blue=ORF Green=Tags(s)

TTTTGTAATACGACTCACTATAGGGCGGCCGGAATTCGTCGACTGGATCCGGTACCGAGGAGATCTGCC  
GCC**CGATCGCC**

ATGGCGGGCGGCTGCGGCTGCTCTGGGTGTCGCTATTGGTGTCTGCTGGCGCAGCTAGGGCCGACGCTG  
GACTGGGCGGCTCGGAGAGCGTCTCCGCGTGCCTTACCCCGGTCGTGTGCGGCTGCGCTGCGTCCA  
TGGGCGACCGGCTCCCCTGTACCCGACCTGCGCGCCCGCAACGCCACCAGCGTGGACAGCGGCGCT  
CCCGCGGGGCGGCCCGGGGGACCCGGCTTCCGCGCCTTCTGTGTCCCTTGATCTGTACAATGGCG  
GTGTGTGCGTGAAGCCTGACCGTGCCTCTGTCCCGGACTTCGCTGGCAAGTTCTGCCAGTTGCACTC  
CTCGGGCGCCCGGCCCGGCCCGGCTGTACAGGCCTCACCCGCTCCGTGTACTATGCCACTGGCC  
AACCCACGCGACGACGAGCAGCGGTGGCATCTATGGTGAAGCGTCCACGTGGAGCACCCGAGGAGCGT  
CGGTGGTGGTGCACAGGTGGAGCGTGTGTCTGGCCCTTGGGAGGAGCGGACGCTGAGGCGGTGGCGCG  
GGCGGAAGCGGCGCGGGCGGAGGCGGCGAGCGCCACACGGTGTGGCACAGAGCGCGCCGCGGGAG  
GACGGCTACTCAGATGCCTCGGGCTTCCGTTACTGCTTTCGGGAGCTGCGCGGAGGCGAATGCGCGTCCC  
CGCTGCCCGGGCTCCGGACGAGGAGTCTGCTGCCGAGGGCGCGCTTGGCCTGGGCGTTCACGACTG  
TCAGTGTGCTCCGAGCGCTGGGAACCTCCGAAAGAGTGAGCGCCAGATGGACCTTGCCAACCGGC  
TTTGAAGAGTTAATGGGTCTGCGAAGATGTGGATGAGTGCAGCTGGCGGGCGTGGCAGCAGCGCG  
AGTGTGCAAAACAGCGCGCGGGTACACGTGTGTGTGCCCGACGCTTCTGCTCGACTCGTCCCAGCAG  
CAGCTGCATCTCCAACAGTGTCTCAGAGGCCAAAGGGCCCTGCTTCCGCGTGTCCGCGACGCGCGC  
TGTTTCGCTGCCATTCTGCGGAACATCACTAAACAGATCTGCTGTGCAGCCGCTAGGCAAGGCTGGG  
GCCGGGCTGCCAGCTCTGCCACCCTTCGGCTCAGAGGGTTTCCGGGAGATCTGCCCGGCTGGTCTGG  
TTACCACTACTCGGCTCCGACCTCCGCTACAACACCAGACCCCTGGGCCAGGAGCCACCCCGAGTGTCA  
CTCAGCCAGCCTCGTACCCTGCCAGCCACCTCTCGCCATCTGCAGGCTTCTGCCACCATCGCCTGG  
AGCCCCGCGCTGAACCCCGGCCGATCCCCGGCCCGCCCTGAGCTTCCCTTGCCAGCATCCCTGCCTG  
GACTGGTCTGAGATTCTGAATCAGTCCCTCCTCCGGCATGTGTGAGCACAACCCCGAGTCTGCGGC



[View online >](#)

CCAGGACGCTGCATTTCCCGGCCAGCGGCTACACCTGCGCTTGC GACTCTGGCTTCCGGCTCAGCCCC  
 AGGGCACCCGATGCATTGATGTGGACGAATGTCGCCGCGTGCCCCGCCCTGTGCTCCCGGGCGCTGCGA  
 GAACTACCAGGCAGCTTCCGCTGCGTGTGCGGCCCGGGCTTCCGAGCCGGCCACGGGCTGCGGAATGC  
 CTGGATGTGGACGAGTGCCACCGCGTGCCGCCGCGGTGTGACCTCGGGCGCTGCGAGAACACGCCAGGCA  
 GTTCTCTGTGCGTGTGCCCGCCGGGTACCAGGCTGCACCGCACGGAGCCAGCTGCCAGGATGTGGATGA  
 ATGCACCCAGAGCCAGGCCCTGTGTGCCGAGGGGCTGCAAGAACCTGCCTGGCTTTCCGCTGTGTT  
 TGCCCGGCTGGCTTCCGGGGCTCGGCGTGTGAAGAGGATGTGGATGAGTGTGCCAGGAGCCGCCCT  
 GTGGGCCCGGCCGCTGTGACAACACGGCAGGCTCCTTTCACTGTGCTGCCCTGCTGGCTTCCGCTCCCG  
 AGGGCCCGGGCCCCCTGCCAAGATGTGGATGAGTGTGCCCGAAGCCCCCACCCTGCACCTACGGCCGG  
 TGTGAGAACACAGAAGGCAGCTTCCAGTGTGTCTGCCCATGGGCTTCCAACCAACACTGCTGGCTCCG  
 AGTGCGAGGATGTGGATGAGTGTGAGAACCACCTCGCATGCCCTGGCAGGAGTGTGTGAACTCGCCCG  
 CTCCTTCCAGTGCAGGACCTGTCTTCTGGCCACCACCTGCACCGTGGCAGATGCACTGATGTGGACGAA  
 TGCAGTTCGGGTGCCCTCCCTGTGGTCCCACGGCCACTGCACTAACCCGAAGGCTCCTTCCGCTGCA  
 GCTGCGGCCAGGCTACCGGGCGCGTCCGGTCCGCCCGGGCCCTGCGCAGACGTGAACGAGTGCCTGGA  
 GGGCGATTTCTGCTTCCCTCACGGCGAGTGCCTCAACACTGACGGCTCCTTTGCCTGACTTGTGCCCT  
 GGTACCGACCCGGACCCCGCGGAGCCTTTGCCCTCGACGTTGACGAGTGCAGCGAGGAGGACCTTTGCC  
 AGAGCGGCATCTGTACCAACACCACGGCTCCTTCGAGTGCATCTGTCTCCGGGACACCCGCTGGCCC  
 GGACCTCGCTCCTGCCTCGACGTGGACGAATGTGCGAGCGAGGCCAGCCCTGTGCGGGTGCAGCGC  
 TGTGAGAACTCTCCCGGCTCCTACCGCTGTGTCCGGGACTGCGATCCTGGGTACCACGGGGCCCCGAGG  
 GCACCTGTGACGATGTGGATGAGTGCCAAGAATATGGTCCCGAGATTTGTGGAGCCAGCGTTGTGAGAA  
 CACCCCTGGCTCCTACCGCTGCACACAGCCTGTGACCTGGCTATCAGCCACGCCAGGGGGCGGATGC  
 CAGGATGTGGACGAATGCCGGAACCGGTCTTCTGCGGTGCCACGCCGTGTGCCAGAACCTGCCCGGT  
 CTTTCCAGTGCCTGTGACACAGGTTACGAGGGGGCACGGGATGGGCGTCACTGCGTGGATGTGAACGA  
 GTGTGAAACACTACAGGTGTATGTGGAGCTGCCCTGTGTGAAAATGTGGAAGGCTCCTTCTCTGTGTC  
 TGCCCCAACAGCCGGAAGAGTTTGACCCCATGACTGGACGCTGTGTTCCCCACGAACCTCTGCTGGCA  
 CGTTCCAGGCTCGCAGCCCCAGGCACCTGCTAGCCCCGTTTGTGCCCGCCAGGCCACCTCCGCCACCCCT  
 GCCCGCCGACCCAGCACACCTAGGCAGGGCCCTGTGGGGAGTGGGCGCCGGGAGTGTACTTTGACACA  
 GCGGCCCGGATGCATGTGACAACATCCTGGCTCGGAATGTGACATGGCAGGAGTGTGCTGTACTGTGG  
 GTGAGGGTGGGGCAGCGGCTGCCGCATCCAGCAGTCCCAGGACCCGAGACAGTGTGAGTACCAGTATT  
 GTGCCCTCACGGCCGGGCTACCTGGCGCCAGTGGAGACCTGAGCCTCCGGAGAGACGTGGACGAATGT  
 CAGCTCTCCGAGACCAGGTGTGCAAGAGTGGCGTGTGTGTAACACGGCCCCGGCTACTCATGTATT  
 GCAGAACGGCTACTACTACCACACACAGCGGCTGGAGTGCATCGACAATGACGAGTGCGCCGATGAGGA  
 ACCGGCTGTGAGGGCGGCCGCTGTGTCAACACTGTGGGCTCTTATCACTGTACCTGCGAGCCCCACTG  
 GTGCTGGATGGCTCGCAGCGCCGCTGCGTCTCCAACGAGAGCCAGAGCCTCGATGACAATCTGGGAGTGT  
 GCTGGCAGGAAGTGGGGGCTGACCTCGTGTGACGCCACCTCGGCTGGACCGTCAAGGCCACTACACAGA  
 GTGCTGTGCCTGTATGGAGAGGCTGGGGCATGGACTGCGCCCTCTGCCTGCGCAGGACTCAGATGAC  
 TTCGAGGCCCTGTGCAATGTGCTACGCCCCCCGCATATAGCCCCCGCAGGAGTGGCTTTGACTCC  
 CCTACGAGTACGGCCAGACTTAGTCCACCTTACCAGGGCTCCCATATGGGCTGAGTGTACCACCC  
 ACCTGCGTACCCTACGACCCCTACCCACCGCCACTGGGCCCTTCGCCCGCCGGGAGGCTCCTTATGGG  
 GCACCCCGCTTCGACATGCCAGACTTTGAGGACGATGGTGGCCCTATGGCGAATCTGAGGCTCCTGCGC  
 CACTGGCCCGGCACCCGCTGGCCCTATCGGTCCCGGACACCCGCGCTCCTTCCAGAGCCCGAGGA  
 GCCTCCTGAAGGTGGAAGCTATGCTGGTCCCTGGCTGAGCCCTACGAGGAGTGGAGGCGGAGGAGTGC  
 GGGATCCTGGACGGCTGCACCAACGGCCGCTGCGTGC GCGTCCCCGAAGGCTTCACTGCCGTTGCTTCG  
 ACGGCTACCGCTGGACATGACCCGCATGGCTGCGTTGACATCAACGAGTGTGATGAGGCCGAGGCTGC  
 CTCGCCGCTGTGCGTCAACGCGGTTGCCTCAACAGGATGGCTCCTTCCGCTGCATCTGCCGCCGGGA  
 TTCGACCCACGCACCAGCCGACCACTGTGCGCCGCACGGCCCCGGCC

ACGCGTACGCGGCCGCTCGAG – GFP Tag – GTTTAA

Protein Sequence: >RG216920 representing NM\_001042545  
 Red=Cloning site Green=Tags(s)

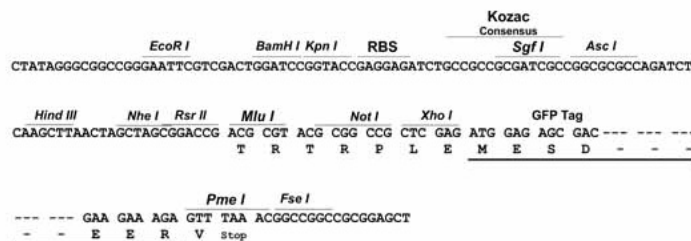
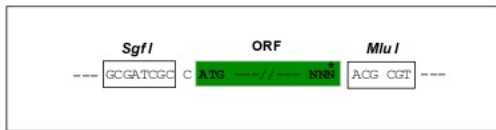
MAGGVRLLVWVLLVLLAQLGPQPLGRLGERLVRVFTPVVCGLRVHGPTGSRCTPTCAPRNATSVDSGA  
 PGGAAPGGPGFRAFLCPLICHNGGVCVKPDRCLCPPDFAGKFCQLHSSGARPPAPAVPGLTRSVYTMPLA  
 NHRDDEHGVASMSVHVEHPQEASVVVHQVERVSGPWEEADAEAVARAEAAARAEAAAPYTVLAQSAPRE  
 DGYSASGFYCFRELRGGEASPLPLRLTQEVCCRGAGLAWGVHDCQLCSERLGNSEKRVSPADGKPCPTG  
 FERVNGSCEDVDECATGGRCQHGEACANTRGGYTCVCPDGFLLDSSRSCISQHVISEAKGPCFRVLRDGG  
 CSLPILRNITKQICCCSRVGKAWGRGCQLCPPFGSEGFREICPAGPGYHYSASDLRYNTRPLGQEPFRVS  
 LSQPRTLPASTRPSAGFLPTHRLEPRPEPRDPRPGPELPLPSIPAWTGPEIPESGSPSSGMCQRNPQVCG  
 PGRICSRPSGYTCACDSGFRLSPQGTICIDVDECRRVPPPCAPGRCENSPGSRFCVCGPGFRAGPRAAEC  
 LDVDECHRVPCCDLGRCENTPGSFLCVCAPAGYQAAPHGASCQDVDECTQSPGLCGRGACKNLPGSFRCV  
 CPAGFRGSACEEDVDECAQEPCCPGPGRCDNTAGSFHCACAPAGFRSRGPGAPCQDVDECARSPPPCTYGR  
 CENTEGSFQCVCPMGFQPNNTAGSECEDVDECENHLACPGQECVNSPGSFQCRCTCPGHHLHRGRCTDVDE  
 CSSGAPPCGPHGHCTNTEGSFRCSAPGRAPSGRPGCADVNECLEGDFCFPHGECLNTDGSFACTCAP  
 GYRPGPRGASCLDVDECSSEDLCSQSGICTNTDGSFECICPPGHRAGPDLASCLDVDECRRERGPALCGSQR  
 CENSPGSYRCVRDCDPGYHAGPEGTCDVDECQEYGPETCGAQRCENTPGSYRCTPACDPGYQPTPGGGC  
 QDVDECNRNRSFCGAHAVCQNLPGSFQCLCDQGYEGARDGRHCVDVNECETLQGVCGAALCENVEGSFLCV  
 CPNSPEEFDPMTRGRCVPRTSAGTFPGSQPAPASVLPARPPPPPLPRRSTPRQGPVGSGRRECYFDT  
 AAPDACDNLARNVTWQECCTVGEWGSQCRIQQCPGTETAIEYQSLCPHGRGYLAPSGDLSLRDQVDEC  
 QLFRDQVCKSGVCVNTAPGYSCYCSNGYYHTQRLECIDNDECADEEPACEGGRCVNTVGSYHCTCEPLL  
 VLDGSQRRCVSNESQSLDDNLGVCWQEVGADLVCSPRLDRQATYTECCCLYGEAWGMDCALCPAQDSDD  
 FEALCNVLRPPAYSPPRPGGGLPYEYGPDLGPPYQGLPYGPEL YPPPALPYDPYPPPPGPFARREAPYG  
 APRFDMPDFEDDGGPYGESEAPPPGPGTRWPYRSRDRRSFPEPEEPPGGSYAGSLAEPYEELEAECC  
 GILDGCTNGRCVRVPEGFTCRCFDGYRLDMTRMACVDINECDEAEASPLCVNARCLNTDGSFRCTCRPG  
 FAPTHQPHHCAPARPA

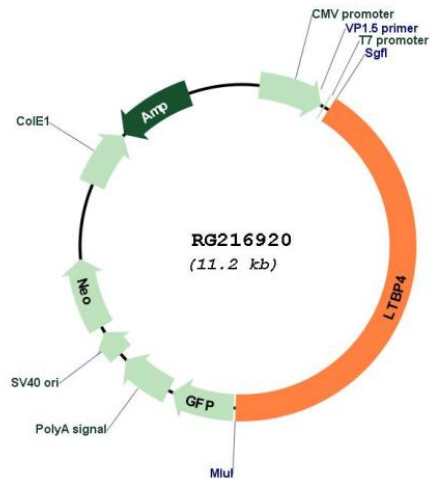
TRTRPLE - GFP Tag - V

Restriction Sites: SgfI-MluI

Cloning Scheme:

Cloning sites used for ORF Shutting:



**Plasmid Map:**


**ACCN:** NM\_001042545

**ORF Size:** 4671 bp

**OTI Disclaimer:** Due to the inherent nature of this plasmid, standard methods to replicate additional amounts of DNA in *E. coli* are highly likely to result in mutations and/or rearrangements. Therefore, OriGene does not guarantee the capability to replicate this plasmid DNA. Additional amounts of DNA can be purchased from OriGene with batch-specific, full-sequence verification at a reduced cost. Please contact our customer care team at [custsupport@origene.com](mailto:custsupport@origene.com) or by calling 301.340.3188 option 3 for pricing and delivery.

The molecular sequence of this clone aligns with the gene accession number as a point of reference only. However, individual transcript sequences of the same gene can differ through naturally occurring variations (e.g. polymorphisms), each with its own valid existence. This clone is substantially in agreement with the reference, but a complete review of all prevailing variants is recommended prior to use. [More info](#)

**OTI Annotation:** This clone was engineered to express the complete ORF with an expression tag. Expression varies depending on the nature of the gene.

**Components:** The ORF clone is ion-exchange column purified and shipped in a 2D barcoded Matrix tube containing 10ug of transfection-ready, dried plasmid DNA (reconstitute with 100 ul of water).

**Reconstitution Method:**

1. Centrifuge at 5,000xg for 5min.
2. Carefully open the tube and add 100ul of sterile water to dissolve the DNA.
3. Close the tube and incubate for 10 minutes at room temperature.
4. Briefly vortex the tube and then do a quick spin (less than 5000xg) to concentrate the liquid at the bottom.
5. Store the suspended plasmid at -20°C. The DNA is stable for at least one year from date of shipping when stored at -20°C.

**RefSeq:** [NM\\_001042545.2](#)

**RefSeq Size:** 4979 bp

**RefSeq ORF:** 4674 bp

**Locus ID:** 8425

**UniProt ID:** [Q8N2S1](#)

**Cytogenetics:** 19q13.2

**Protein Families:** Druggable Genome

**Gene Summary:** The protein encoded by this gene binds transforming growth factor beta (TGFB) as it is secreted and targeted to the extracellular matrix. TGFB is biologically latent after secretion and insertion into the extracellular matrix, and sheds TGFB and other proteins upon activation. Defects in this gene may be a cause of cutis laxa and severe pulmonary, gastrointestinal, and urinary abnormalities. Three transcript variants encoding different isoforms have been found for this gene.[provided by RefSeq, May 2010]