

Product datasheet for **RG216896**

SDF4 (NM_016547) Human Tagged ORF Clone

Product data:

Product Type:	Expression Plasmids
Product Name:	SDF4 (NM_016547) Human Tagged ORF Clone
Tag:	TurboGFP
Symbol:	SDF4
Synonyms:	Cab45; SDF-4
Mammalian Cell Selection:	Neomycin
Vector:	pCMV6-AC-GFP (PS100010)
E. coli Selection:	Ampicillin (100 ug/mL)
ORF Nucleotide Sequence:	>RG216896 representing NM_016547 Red=Cloning site Blue=ORF Green=Tags(s)

TTTTGTAATACGACTCACTATAGGGCGGCCGGAATTCGTCGACTGGATCCGGTACCGAGGAGATCTGCC
GCC**CGATCGCC**

ATGGTCTGGCCCTGGGTGGCGATGGCGTCCAGGTGGGGTCCCCTCATTGGCCTGGCTCCGTGCTGCCTCT
GGCTCCTGGGGCAGTCCTTCTGATGGACGCGTCTGCACGGCCTGCCAACCACTCGTCCACTCGAGAGAG
AGTAGCCAACAGGGAGGAGAATGAGATCCTGCCCCAGACCACCTGAACGGGGTGAAGCTGGAGATGGAC
GGGCACCTCAATCGCGGCTTCCACCAGGAGGTCTTCTAGGCAAGGACCTGGGTGGCTTTGATGAGGACG
CGGAGCCGCGGGCAGCCGGAGGAAGCTGATGGTCATCTTTTCCAAGGTGGATGTGAACACTGACCGGAA
GATCAGTGCCAAGGAGATGCAGCGCTGGATCATGGAGAAGACGGCCGAGCACTTCCAGGAGGCCATGGAG
GAGAGCAAGACACTTCCGCGCCGTGGACCCTGACGGGGACGGTCACGTGTCTTGGGACGAGTATAAGG
TGAAGTTTTGGCGAGTAAAGGCCATAGCGAGAAGGAGTTGCCGACGCCATCAGGCTCAACGAGGAACT
CAAAGTGGATGAGGAAACACAGGAAGTCTGGAGAACCTGAAGGACCGCTGGTACCAGGCGGACAGCCCC
CCTGCAGACCTGCTGCTGACGGAGGAGGAGTTCCTGTCTGTTCCACCCCGAGCACAGCCGGGGAATGC
TCAGGTTTCATGGTGAAGGAGATCGTCCGGGACCTGGACCAGGACGGTGACAAGCAGCTCTCTGTGCCGA
GTTTCATCTCCCTGCCCGTGGGCACCGTGGAGAACCAGCAGGGCCAGGACATTGACGACAACTGGGTGAAA
GACAGAAAAAAGGAGTTTGAGGAGCTCATTGACTCCAACCAGCAGGCATCGTGACCGCCGAGGAGCTGG
AGAACGTGCCACACTCCCGCTGCAGCAATAGGCACCTTAAATAGCCACTTCGTGCGGCTGGCCGCGGA
GCTCGGAGGGGAAAGGCGACGCTGACCTGTGCCCGCTCGCCCGCAGAGCTACATGGACCCCA

AG**CGGACCG**ACGCGTACGCGGCCGCTCGAG - GFP Tag - GTTTAA



[View online »](#)

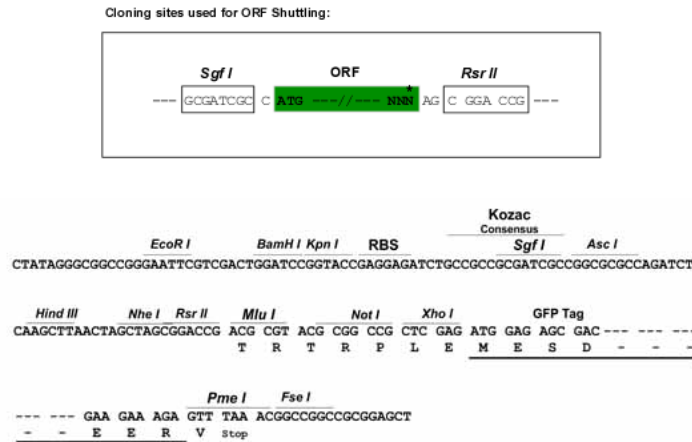
Protein Sequence: >RG216896 representing NM_016547
 Red=Cloning site Green=Tags(s)

MVWPWVAMASRWGPLIGLAPCCLWLLGAVLLMDASARPANHSSTRERVANREENEILPPDHLNGVKLEMD
 GHLNRGFHQEVFLGKDLGGFDEDAEPRRSRRKLMVIFSKVDVNTDRKISAKEMQRWIMEKTAEHFQEAME
 ESKTHFRAVDPDGDGHVSWDEYKVKFLASKGHSEKEVADAIRLNEELKVDEETQEVLENLKDRWYQADSP
 PADLLLTEEEFLSFLHPEHSRGMRLRFMVKEIVRDLDDQDQDKQLSVPEFISLPVGTVENQQQDIDDNWVK
 DRKKEFEELIDSNHDGIVTAAELENVPTLPLQPIGTLNSHFVRLAAELGGKATLTCAPLARRATWTP

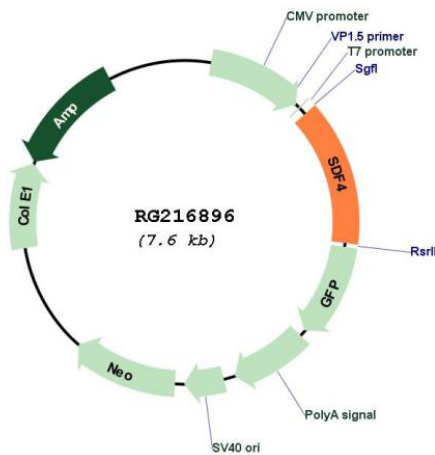
SGPTRRRLE - GFP Tag - V

Restriction Sites: Sgfl-RsrII

Cloning Scheme:



Plasmid Map:



ACCN: NM_016547

ORF Size: 1044 bp

OTI Disclaimer:	The molecular sequence of this clone aligns with the gene accession number as a point of reference only. However, individual transcript sequences of the same gene can differ through naturally occurring variations (e.g. polymorphisms), each with its own valid existence. This clone is substantially in agreement with the reference, but a complete review of all prevailing variants is recommended prior to use. More info
OTI Annotation:	This clone was engineered to express the complete ORF with an expression tag. Expression varies depending on the nature of the gene.
Components:	The ORF clone is ion-exchange column purified and shipped in a 2D barcoded Matrix tube containing 10ug of transfection-ready, dried plasmid DNA (reconstitute with 100 ul of water).
Reconstitution Method:	<ol style="list-style-type: none">1. Centrifuge at 5,000xg for 5min.2. Carefully open the tube and add 100ul of sterile water to dissolve the DNA.3. Close the tube and incubate for 10 minutes at room temperature.4. Briefly vortex the tube and then do a quick spin (less than 5000xg) to concentrate the liquid at the bottom.5. Store the suspended plasmid at -20°C. The DNA is stable for at least one year from date of shipping when stored at -20°C.
RefSeq:	NM_016547.2 , NP_057631.1
RefSeq Size:	2167 bp
RefSeq ORF:	1026 bp
Locus ID:	51150
UniProt ID:	Q9BRK5
Cytogenetics:	1p36.33
Domains:	EFh
Protein Families:	Transmembrane
Gene Summary:	This gene encodes a stromal cell derived factor that is a member of the CREC protein family. The encoded protein contains six EF-hand motifs and calcium-binding motifs. This protein localizes to the Golgi lumen and may be involved in regulating calcium dependent cellular activities. [provided by RefSeq, Sep 2011]