

Product datasheet for **RG216891**

ZBTB10 (NM_023929) Human Tagged ORF Clone

Product data:

Product Type:	Expression Plasmids
Product Name:	ZBTB10 (NM_023929) Human Tagged ORF Clone
Tag:	TurboGFP
Symbol:	ZBTB10
Synonyms:	RINZF
Mammalian Cell Selection:	Neomycin
Vector:	pCMV6-AC-GFP (PS100010)
E. coli Selection:	Ampicillin (100 ug/mL)



[View online »](#)

ORF Nucleotide
Sequence:

>RG216891 representing NM_023929
Red=Cloning site Blue=ORF Green=Tags(s)

TTTTGTAATACGACTCACTATAGGGCGGCCGGGAATTCGTCGACTGGATCCGGTACCGAGGAGATCTGCC
GCC**CGGATCGCC**

ATGTCGTTCACTGAAATGAACCGCAGGACGCTGGCGTTCCGAGGAGCGGGTTGGTCACCGCTAGCGGCG
GCGGCTCCACGAACAATAACGCTGGCGGGGAGGCCTCAGCTTGGCTCCGAGCCCCAGCCGAGACAGCC
CCCCCGACAGCGCCGCCCGCTTCCAGCCGCTAATGGCGGGGGCCGACGAGGAAGTGAATTGGAG
GGCCTGGAGCCCCAAGACCTGGAGGCTCCGCCGGGCCGGCCGCCGGCGCCGAGGAAGCAAGGAGT
TGCTGCTCCCCAAGACGCGGGCGGCCACCTCGCTTGGCGGTGGCGGGGGGGCCCCCTGCTAGCGGA
AAGGAACCGTCGGACTCTGGCTTCCGAGGCGGCGGGCGGGGGTCTCGCAACAATGGCAGTAGCCGC
GGCCGCCCGAGACCTCGGTGTGCCCTTGAGGCATTTCAATGGCGAGGGCCGGCGACTGTGGATCTGG
AGCTGGACGCGCTGGAGGGAAGGAGTTGATACAGGACGGCGCTCCCTGAGCGACAGCACCGAGGACGA
GGAGGAGGGGGCAGCCTGGGCGACGGCAGCGGGCGGAAGGCGGCAGCTGCAGCAGCAGCAGCGGTCG
GGCGGCGATGGCGGGGACGAAGTGGAGGGCAGCGGTGTGGGAGCTGGCGAAGGAGAGACTGTCCAGCACT
TCCCGCTCGCGCGGCCAAGTCTCTAATGCAGAAGCTCCAATGCTCCTCCAGACCTCCTGGCTCAAGGA
CTTTCCCTGGCTGCGCTATTCGAAGTACTGGTCTTATGTCTTGGCGGTGGTGC AAAAGACCCCTGCA
GATGGGGGAAGCGTGGACCTTCCCCAGTGGGGCATGATGAGCTTTCGCGAGGGACCCGCAACTACAAGA
AAACCCCTCCTCTGAGGCACCACGTCTCTACCGAGCACAACTCCACGAAGCCAACGCCCCAGAGTCAGA
AATACCATCAGAGGAGGGTACTGGGACTTTAATAGGAGGCCAAATGAGAATCTTATTGCTATCAACT
CTGCGCAACTAAATGAACAGAGAAAGAAAGGTATTCTTTGTGATGTGAGCATTGTGGTAAGCGGAAAA
TCTTCAAAGCTCATAAGAATCCTGGTTGCAGGACCGTTTCTTTAAGACTTTATATTGCTTTTCAA
CAAAGAAAGCCCTAACCAAAACAATACTACCCACTTAGATATTGCTGCAGTTCAAGGTTTTTCAGTCATC
TTGGACTTCTTGTATTCTGGTAACCTGGTCTCAAGCCAAAATGCCATTGAAGTTATGACCGTGCCA
GCTATCTTCAAATGAGTGAAGTTGTTCAAACCTGCCGAAATTTCAATAAGATGCCTTAAATATAAGCAT
TAAATCAGAAGCTCCAGAGTCTGTAGTTGTGGACTATAAATAGAAAACCAAGTTAATAGAGATGGTCTG
TCTTCATCAGGGATCAAAAAATGGCAGTTTTTGGGCAACACGGAATCTTACCAATTTGGCAAGTAATG
TAAAGATTGAAAATGATGGTTGTAATGTCGACGAGGGCCAAATAGAAAACCTACCAATGAATGACAGTAG
TTGGGTCCAGGATGGATCTCCTGAAATGGCTGAAAATGAATCTGAAGTCAAACAAAAGTGTATTATTGG
AATAATATGGGCTCCAGGGAATTCAGAGACTGGCAAAACAAGGAGGAAAAACCAACTACAAAAGAT
TTATTTATAATATCCACCTAATAATGAAACGAATTTAGAAGATTGCTCAGTAATGCAGCCACCTGTTGC
CTATCCAGAAGAAAATACACTACTCATCAAGGAAGAACCAGATTTAGATGGTGTCTACTCTCGGGCCA
GATGGTGTAGGAATGTGAATGCAAATTTATTGGCTGAAGCTGGCACTAGTCAAGATGGAGGTGATGCTG
GTACTTCATGATTTCAAGTATGGTTTGTGCTGCTGGTCTTCAAATGATTTCAAGTATGGATTATTGCC
AGAATCTTGGCCAAAACAAGAACTGGGAAAATGGTGAATCATCTCTAATCATGAACAAGTTAAAATGC
CCTCATTGTAGCTATGTAGCCAAATACAGACGAACTAAAAGGCACTTGCTCATTACACAGGAGTGA
GATCATTAGCTGTGATATTTGTGAAAAGTGTACTCGAAGAGAACATGTAAAAGACATTCCCTGGT
GCATAAAAAGGATAAAAAATACAAATGTATGGTGTGTAAGAAGATCTTCATGTTAGCAGCCAGTGTGGA
ATAAGACATGGATCTCGACGTTATGGTGTGTTGTAGACTGTGCAGATAAATCACAGCCAGGAGGGCAAG
AAGGTGTAGATCAGGACAGGATACAGAATCCCTCGGGATGAAGAATACGAGGAGAATGAAGTAGGAGA
AGCTGATGAAGAGCTAGTTGATGATGGAGAAGATCAGAATGATCCCTCTCGATGGGATGAATCAGGAGAA
GTTTGTATGTCTTAGATGAT

AGCGGACCGACGCGTACGCGGCCGCTCGAG - GFP Tag - GTTTAA

Protein Sequence: >RG216891 representing NM_023929
Red=Cloning site Green=Tags(s)

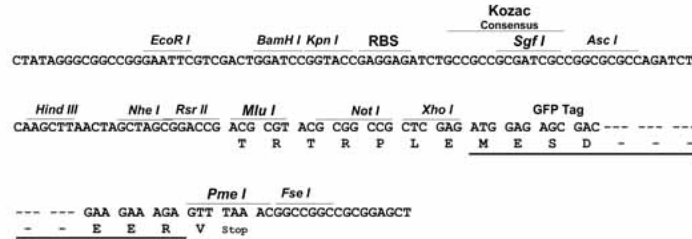
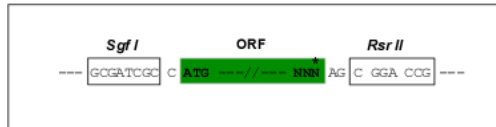
```
MSFSEMNRRTLAFRGGGLVTASGGGSTNNAGGEASAWPPQPQRQPPTAPPALQPPNGRGADEEVELE  
GLEPQDLEASAGPAAGAAEEAKELLLPQDAGGPTSLGGGAGGPLLAERNRRTLAFRGGGGGLGNNGSSR  
GRPETSVMPLRHFNGRGPATVDLELDALEGKELIQDGASLSDSTEDEEGASLGDGSGAEGGSCSSRRS  
GGDGGDEVEGSGVGAGEGETVQHFPLARPKSLMQKLQCSFQTSWLKDFPWLRYSKDTGLMSCGWCQKTPA  
DGGSVDLPPVGHDEL SRGTRNYKKTLLLRHHVSTEHKLHEANAPESEIPSEEGYWDFNRRPNENSYCYQL  
LRQLNEQRKKGILCDVSIYVSGKIFKAHKNILVAGSRFFKTLYCFSNKESPNQNNTTHLDIAAVQGFSVI  
LDFLYSGNLVLT SQNAIEVMTVASYLQ MSEVVQTCRNF IKDALNISI KSEAPESVVVDYNNRKPVNRDGL  
SSSRDQKIASFWATRNL TNLASNVKIENDGCNVDEGQIENYQMNDS SWVQDGSPEMAENESEGT KVFIW  
NNMGSQGIQETGKTRRNQTTKRFIYNI PPNETNLEDCSVMQPPVAYPEENTLLIKEEPDL DGALLSGP  
DGDNRNVANLLAEAGTSQDGGDAGTSHDFKYGLMPGPSNDFKYGLLPESWPKQETWENGESLIMNKLK  
PHCSYVAKYRRTLKRHLLIHTGVRSFSCDICGLFTRREHVKRHSLVHKKDKKYKCMVCKKIFMLAASVG  
IRHGSRRYGVCVDCADK SQPGGQEGVDQGDTEFPRDEEYEENEVGEADEELVDDGEDQNDPSRWDES  
GECVMSLDD
```

SGPTRRRLE - GFP Tag - V

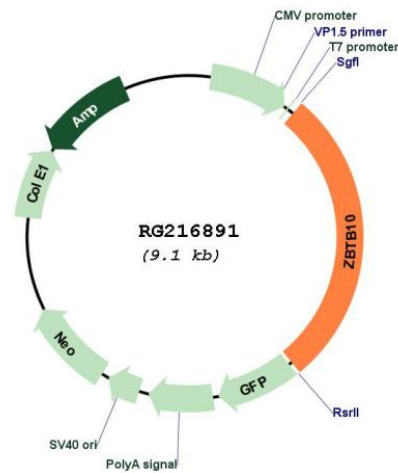
Restriction Sites: Sgfl-RsrII

Cloning Scheme:

Cloning sites used for ORF Shuttling:



Plasmid Map:



ACCN:	NM_023929
ORF Size:	2541 bp
OTI Disclaimer:	The molecular sequence of this clone aligns with the gene accession number as a point of reference only. However, individual transcript sequences of the same gene can differ through naturally occurring variations (e.g. polymorphisms), each with its own valid existence. This clone is substantially in agreement with the reference, but a complete review of all prevailing variants is recommended prior to use. More info
OTI Annotation:	This clone was engineered to express the complete ORF with an expression tag. Expression varies depending on the nature of the gene.
Components:	The ORF clone is ion-exchange column purified and shipped in a 2D barcoded Matrix tube containing 10ug of transfection-ready, dried plasmid DNA (reconstitute with 100 ul of water).
Reconstitution Method:	<ol style="list-style-type: none">1. Centrifuge at 5,000xg for 5min.2. Carefully open the tube and add 100ul of sterile water to dissolve the DNA.3. Close the tube and incubate for 10 minutes at room temperature.4. Briefly vortex the tube and then do a quick spin (less than 5000xg) to concentrate the liquid at the bottom.5. Store the suspended plasmid at -20°C. The DNA is stable for at least one year from date of shipping when stored at -20°C.
RefSeq:	NM_023929.2 , NP_076418.2
RefSeq Size:	4146 bp
RefSeq ORF:	2544 bp
Locus ID:	65986
UniProt ID:	Q96DT7
Cytogenetics:	8q21.13
Domains:	BTB, zf-C2H2
Protein Families:	Transcription Factors
Gene Summary:	May be involved in transcriptional regulation.[UniProtKB/Swiss-Prot Function]