

Product datasheet for **RG216888**

TRPM4 (NM_017636) Human Tagged ORF Clone

Product data:

Product Type:	Expression Plasmids
Product Name:	TRPM4 (NM_017636) Human Tagged ORF Clone
Tag:	TurboGFP
Symbol:	TRPM4
Synonyms:	EKVP6; hTRPM4; LTrpC4; PFHB1B; TRPM4B
Mammalian Cell Selection:	Neomycin
Vector:	pCMV6-AC-GFP (PS100010)
E. coli Selection:	Ampicillin (100 ug/mL)
ORF Nucleotide Sequence:	>RG216888 representing NM_017636 Red=Cloning site Blue=ORF Green=Tags(s)

TTTTGTAATACGACTCACTATAGGGCGGCCGGAATTCGTCGACTGGATCCGGTACCGAGGAGATCTGCC
GCC**CGATCGCC**

ATGGTGGTGCCGGAGAAGGAGCAGAGCTGGATCCCAAGATCTTCAAGAAGAAGACCTGCACGACGTTCA
TAGTTGACTCCACAGATCCGGGAGGGACCTTGTGCCAGTGTGGGCGCCCCGGACCGCCACCCCGCAGT
GGCCATGGAGGATGCCTTCGGGGCAGCCGTGGTGACCGTGTGGGACAGCGATGCACACACCAGGAGAAG
CCCACCGATGCCTACGGAGAGCTGGACTTCACGGGGGCCGGCCGAAGCACAGCAATTTCTCCGGCTCT
CTGACCGAACGGATCCAGCTGCAGTTTATAGTCTGGTCACACGCACATGGGGCTTCGGTCCCGCAACCT
GGTGGTGTCACTGCTGGGGGATCGGGGGCCCGTCCAGACCTGGCTGCAGGACCTGCTGCCTCGT
GGGCTGGTGGGGCTGCCAGAGCACAGGAGCCTGGATTGTCACTGGGGTCTGCACACGGGCATCGGCC
GGCATGTTGGTGTGGCTGTACGGGACCATCAGATGGCCAGCACTGGGGCACCAAGGTGGTGGCCATGGG
TGTGGCCCCCTGGGGTGTGGTCCGGAATAGAGACACCCTCATCAACCCCAAGGGCTCGTTCCCTGCGAGG
TACCGTGGCGCGGTGACCCGGAGGACGGGGTCCAGTTTCCCCTGGACTACAACCTACTCGGCCTTCTCC
TGGTGGACGACGGCACACACGGCTGCCTGGGGGGCAGAACCGCTTCCGCTTGCCTGGAGTCTACAT
CTCACAGCAGAAGACGGGCGTGGGAGGGACTGGAATTGACATCCCTGTCTCCTCCTGATTGATGGT
GATGAGAAGATGTTGACGCGAATAGAGAACGCCACCCAGGCTCAGCTCCCATGTCTCCTCGTGGCT
CAGGGGAGCTGCGGACTGCCTGGCGGAGACCCTGGAAGACACTTGGCCCCAGGGAGTGGGGGAGCCAG
GCAAGGCGAAGCCCGAGATCGAATCAGGCGTTTCTTCCAAAGGGACCTTGAGGTCTGCAGGCCAG
GTGGAGAGGATTATGACCCGGAAGGAGCTCCTGACAGTCTATTCTTCTGAGGATGGGTCTGAGGAATTCG
AGACCATAGTTTTGAAGGCCCTTGTGAAGGCTGTGGGAGCTCGGAGGCCTCAGCCTACCTGGATGAGCT
GCGTTTGGCTGTGGCTTGAACCGCGTGGACATTGCCAGAGTGAACCTTTTCGGGGGACATCCAATGG
CGGTCTTCCATCTCGAAGCTTCCCTCATGGACGCCCTGTGAATGACCGGCCTGAGTTCGTGCGCTTGC
TCAATTTCCACGGCCTCAGCCTGGGCCACTTCTGACCCCGATGCGCCTGGCCAACTCTACAGCGCGGC
GCCCTCAACTCGCTCATCCGAACCTTTGGACCAGGCGTCCCACAGCGCAGGCACCAAGCCCCAGCC



CTAAAAGGGGAGCTGCGGAGCTCCGGCCCCCTGACGTGGGGCATGTGCTGAGGATGCTGCTGGGAAGA
TGTGCGCGCCGAGGTACCCCTCCGGGGGCGCTGGGACCCTACCCAGGCCAGGGCTTCGGGGAGAGCAT
GTATCTGCTCTCGGACAAGGCCACCTCGCCGCTCTCGCTGGATGCTGGCCTCGGGCAGGCCCCCTGGAGC
GACCTGCTTCTTTGGGCACTGTTGCTGAACAGGGCACAGATGGCCATGTACTTCTGGGAGATGGTTCCA
ATGCAGTTTCTCAGCTCTTGGGGCTGTTTGTGCTCCGGGTGATGGCACGCCTGGAGCCTGACGCTGA
GGAGGCAGCACGGAGAAAGACCTGGCGTTCAAGTTTGAGGGGATGGGCGTTGACCTCTTTGGCGAGTGC
TATCGCAGCAGTGAGGTGAGGGCTGCCCGCTCCTCCTCCGTGCTGCCCGCTCTGGGGGATGCCACTT
GCCTCCAGCTGGCCATGCAAGCTGACGCCCGTGCCTTCTTTGCCAGGATGGGGTACAGTCTCTGCTGAC
ACAGAAGTGGTGGGAGATATGGCCAGCACTACCCATCTGGGCCCTGTTCTCGCCTTCTTTGCCCT
CCACTCATCTACACCCGCTCATCACCTTCAGGAAATCAGAAGAGGAGCCACACGGGAGGAGCTAGAGT
TTGACATGGATAGTGTCATTAATGGGAAGGGCTGTCCGGACGGCGGACCCAGCCGAGAAGACGCCGCT
GGGGTCCCGCCAGTCCGGCCGTCCGGTTGCTGCGGGGGCCGCTGCGGGGGCGCCGGTGCCTACGC
CGCTGGTTCCTTCTGGGGCGCCGGTGACCATCTTCATGGGCAACGTGGTACGTACCTGCTGTTCC
TGCTGCTTTTCTCGGGGTGCTGCTCGTGATTCCAGCCGGCGCCCGCCGGCTCCCTGGAGCTGCTGCT
CTATTTCTGGGCTTTCACGCTGCTGTGCGAGAACTGCGCCAGGGCCTGAGCGGAGCGGGGGCAGCCTC
GCCAGCGGGGGCCCCGGCCTGGCCATGCCTCACTGAGCCAGCGCCTGCGCCTCTACCTCGCCGACAGCT
GGAACCACTGCGACCTAGTGGCTCTCACCTGCTTCTCCTGCGCGTGGGGTCCCGCTGACCCCGGGTTT
GTACCACCTGGGCGCACTGTCTCTGCACTCGACTTTCATGGTTTTACGGTGCGGCTGCTTACATCTTC
ACGGTCAACAAACAGCTGGGGCCCAAGATCGTCATCGTGAGCAAGATGATGAAGGACGTGTTCTTCTTCC
TCTTCTTCTCGGCGTGTGGTGGTAGCCTATGGCGTGGCCACGGAGGGGCTCCTGAGGCCACGGGACAG
TGACTTCCCAAGTATCCTGCGCCGCTTCTACCGTCCCTACCTGCAGATCTTCGGGCAGATTTCCCGAG
GAGGACATGGACGTGGCCTCATGGAGCACAGCAACTGCTCGTGAGCCCGGCTTCTGGGCACACCCTC
CTGGGGCCAGGGGGCACCTGCGTCTCCAGTATGCCAACTGGCTGGTGGTGTGCTCCTCGTCATCTT
CCTGCTCGTGGCAACATCCTGCTGGTCAACTTGTCTATTGCCATGTTACAGTTACACATTGCGCAAAGTA
CAGGGCAACAGCGATCTCTACTGGAAGGCGCAGCGTTACCGCCTCATCCGGGAATTCCACTCTCGGCCCG
CGCTGGCCCCGCCCTTTATCGTCATCTCCCACTTGCCTCCTGCTCAGGCAATTGTGCAGGCGACCCCG
GAGCCCCAGCCGCTCCTCCCGGCCCTCGAGCATTTCCGGGTTTACCTTTCTAAGGAAGCCGAGCGGAAG
CTGCTAACGTGGGAATCGGTGCATAAAGGAGAACTTTCTGCTGGCACGCGCTAGGGACAAGCGGGAGAGCG
ACTCCGAGCGTCTGAAGCGCACGTCCAGAAGGTGGACTTGGCACTGAAACAGCTGGGACACATCCGCGA
GTACGAACAGCGCCTGAAAGTGTGGAGCGGGAGGTCCAGCAGTGTAGCCGCTCCTGGGGTGGGTGGCC
GAGGCCCTGAGCCGCTCTGCCTTGTGCCCCAGGTGGGCGCCACCCCTGACCTGCTGGGTCCAAG
AC

ACGCGTACGCGGCCGCTCGAG – GFP Tag – GTTAA

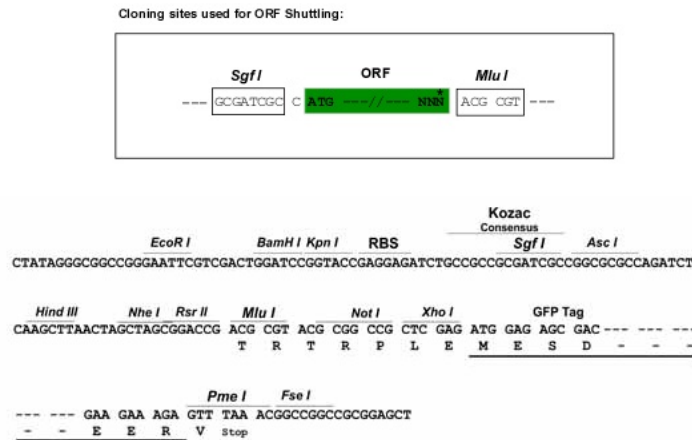
Protein Sequence: >RG216888 representing NM_017636
 Red=Cloning site Green=Tags(s)

MVVPEKEQSWIPKIFKKKTCTTFIVDSTDPGGTLCQCGRPRTAHPAVAMEDAFGAAVTVWSDAHTTEK
 PTDAYGELDFTGAGRKHSNFLRLSDRTDPAAVYSLVTRTWGFRAPNLVSVLGGSGGPVLQTLWQDLLRR
 GLVRAAQSTGAWIVTGLLHTGIGRHVGVAVRDHQMASTGGTKVVAMGVAPWGVVNRDRTLINPKGSFPAR
 YRWRGDPEDGVQFPLDYNYSAFFLVDDGTHGCLGGENRFRLRLESYISQQKTGVGGTGIDIPVLLLLIDG
 DEKMLTRITENATQAQLPCLLVAGSGGAADCLAETLEDTLAPGSGGARQGEARDRIRRFFPKGDLEVLQAQ
 VERIMTRKELLTVYSSDGESEFETIVLKALVKACGSSEASAYLDELRLAVAWNVDIAQSELFRGDIQW
 RSFHLEASLMDALLNDRPEFVRLLI SHGLSLGHFLTPMRLAQLYSAAPNSLIRNLLDQASHSAGTKAPA
 LKGGAAELRPPDVGHVLRMLLGKMCAPRYPSSGAWDPHPGQGFESMYLLSDKATSPLSLDAGLGQAPWS
 DLLLWALLLNRAQMAMYFWEMGSNAVSSALGACLLLRVMARLEPDAEEAARRKDLAFKFEQMGVDLFGEC
 YRSEVRAARLLLRRCPWGDATCLQLAMQADARAFFAQDGVQSLLTQKWWGDMASTTPIWALVLAFFCP
 PLIYTRLITFRKSEETREELEFDMDSVINGEGPVGTADPAEKTPLVPRQSGRPGCCGRCGRRCLR
 RWFHFHWGAPVTIFMGNVVSYLELFLFSLVLLVDFQPAPPGSLELLL YFAWFTLLCEELRQGLSGGGSL
 ASGGPGPHASLSQRLRLYLADSWNQCDLVALTCFLLGVGCRLTPGLYHLGRTVL CIDFMVFTVRLHLIF
 TVNKQLGPKIVIVSKMMKDVFFLFFLVWLVAYGVATEGLLRPRSDFPSILRRVFRPYLQIFGQIPQ
 EDMVALMEHSNCSSEPGFWAHPGAQAGTCVSYANWLVLVLLVIFLLVANILLVNLIIAMFSYTFGKV
 QGNSDL YWKAQRYRLIREFHSPALAPPFIVISHLRLLLRQLCRPRSPQPSSPALEHFRVYLSKEAERK
 LLTWESVHKENFLLARARDKRESDSERLKRTSQKVDLALKQLGHIREYEQRLKVLREVEVQC SRVLGWVA
 EALSRSALLPPGGPPPDLPGSKD

TRTRPLE - GFP Tag - V

Restriction Sites: SgfI-MluI

Cloning Scheme:

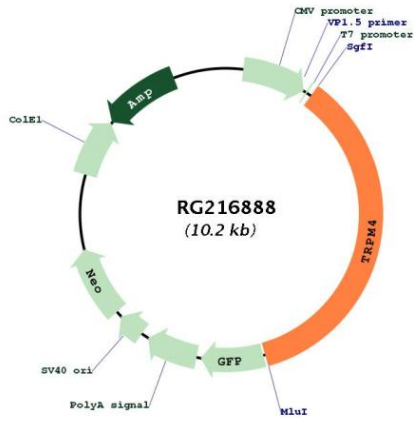


ACCN: NM_017636

ORF Size: 3642 bp

OTI Disclaimer:	The molecular sequence of this clone aligns with the gene accession number as a point of reference only. However, individual transcript sequences of the same gene can differ through naturally occurring variations (e.g. polymorphisms), each with its own valid existence. This clone is substantially in agreement with the reference, but a complete review of all prevailing variants is recommended prior to use. More info
OTI Annotation:	This clone was engineered to express the complete ORF with an expression tag. Expression varies depending on the nature of the gene.
Components:	The ORF clone is ion-exchange column purified and shipped in a 2D barcoded Matrix tube containing 10ug of transfection-ready, dried plasmid DNA (reconstitute with 100 ul of water).
Reconstitution Method:	<ol style="list-style-type: none">1. Centrifuge at 5,000xg for 5min.2. Carefully open the tube and add 100ul of sterile water to dissolve the DNA.3. Close the tube and incubate for 10 minutes at room temperature.4. Briefly vortex the tube and then do a quick spin (less than 5000xg) to concentrate the liquid at the bottom.5. Store the suspended plasmid at -20°C. The DNA is stable for at least one year from date of shipping when stored at -20°C.
RefSeq:	NM_017636.4
RefSeq Size:	4061 bp
RefSeq ORF:	3645 bp
Locus ID:	54795
UniProt ID:	Q8TD43
Cytogenetics:	19q13.33
Protein Families:	Druggable Genome, Ion Channels: Transient receptor potential, Transmembrane
Gene Summary:	The protein encoded by this gene is a calcium-activated nonselective ion channel that mediates transport of monovalent cations across membranes, thereby depolarizing the membrane. The activity of the encoded protein increases with increasing intracellular calcium concentration, but this channel does not transport calcium. [provided by RefSeq, Mar 2016]

Product images:



Circular map for RG216888