

Product datasheet for **RG216885**

ARFGEF2 (NM_006420) Human Tagged ORF Clone

Product data:

Product Type:	Expression Plasmids
Product Name:	ARFGEF2 (NM_006420) Human Tagged ORF Clone
Tag:	TurboGFP
Symbol:	ARFGEF2
Synonyms:	BIG2; dj1164110.1; PVNH2
Mammalian Cell Selection:	Neomycin
Vector:	pCMV6-AC-GFP (PS100010)
E. coli Selection:	Ampicillin (100 ug/mL)
ORF Nucleotide Sequence:	>RG216885 representing NM_006420 Red=Cloning site Blue=ORF Green=Tags(s)

TTTTGTAATACGACTCACTATAGGGCGGCCGGAATTCGTCGACTGGATCCGGTACCGAGGAGATCTGCC
GCC**CGATCGCC**

ATGCAGGAGAGCCAGACCAAGAGCATGTTCTGTGCCGGCCCTGGAGAAGATCCTAGCCGACAAGGAGG
TGAAGCGGCCAGCACTCCAGCTGCGCAGGGCCTGCCAGTGGCGCTCGATGAAATTAAGCAGAAAT
AGAAAAGCAGAGGCTTGGCACTGCTGCACCACAAAGGCAAATTCATTGAAGCTGACAAGTATTTCTT
CCATTCGAGCTAGCTTGGCAGTCCAAGTCCCAAGGGTAGTCAGCACATCCCTTGACTGCTGCAGAAAC
TCATCGCATACGGGCACATCACTGGCAACGCCCTGACAGTGGAGCCCTGGGAAGCGGTGATCGACAG
AATTGTTGAAACATTTGCAGTTGTTTTAGGGCCCTCAGACTGATGAAGGGTTTCAGTTACAAATAATT
AAGGCTCTTCTGACTGCAGTGAATCCCAACACATTGAAATTCATGAGGGTACTATCCTGCAGACAGTGA
GAACATGTTACAATATCTATTTGGCCAGCAAAAATCTCATCAATCAAACCACTGCCAAGGCTACCCCTTAC
TCAGATGCTGAACGTCATTTTACCCGCATGGAAAACCAAGTGTGTCAGGAGGCCAGAGAAGTGGAAAA
CCAATCCAGTCAAACCCAGTCCCTGTGATCCAAGTGCAGCAGTATCCCAAGTTCGTTCTGTTTGA
AGCACAGTCAGGCACAAAGCAAACCAACTCCCGAAAAACAGATTTAACCAACGGTGAACATGCCAG
GAGTGATTTCTGGAAAAGTAAGCACAGAAAATGGAGACGACCCAGAGAAAGAGGCTCATCACTGTCAGGG
ACTGATGACGGAGCCAGGAGGTGGTGAAGGACATCTTGAAGATGTAGTCACATCTGCCATTAAGAAG
CAGCGGAAAAGCATGGTCTGACAGAACCCTGAGAGATTTCTAGGTGAAGTGGAGTGCAGGAATGTGCTAT
TCCCCAGGAGTTGATGAAAACACAGACCAACGGGATAGCCGATGACAGGCAGTCTTGTCTGTCAGCA
GATAATCTGGAATCGGATGCACAAGGACATCAAGTGGCTGCCAGTTCTCCACGTTCTGCAGAAGGATG
CCTTCCTGTGTTCCGCTCCCTGTGCAAGCTGTCCATGAAACCCCTTGGTGAAGGCCCTCCAGACCCAAA
ATCCCATGAGCTGCGTTCCAAGTGGTTTTCCCTGCAGCTGCTCCTCTGTGTTGCAAAATGCTGGCCCC
GTATTCAGGACTCAGGATGTTTCATCAATGCAATCAAGCAATATCTCTGTGTGGCCTTGTCCAAAAACG
GCGTCTCTCAGTGCCTGATGTCTTTGAGCTCTCTTCCATTTTTCTACTCTTTTCAAATTTAA
AATGCACTTGAAAATGCAGATAGAGTCTTTTTCAAAGAGATTTCTGAAATTTAGAAACATCAACA



[View online »](#)

AGTTCTTTT GAGCACAGGTGGATGGTCATT CAGACTCTGACGAGGATCTGTGCAGATGCCAGTGTGTTG
 TGGATATTTATGTCAACTACGACTGTGATTTAAATGCTGCTAACATTTTTGAGCGCCTTGTAATGATTT
 ATCCAAAATTGCTCAGGGAAGAAGTGGACATGAGCTGGGAATGACACCTCTGCAGGAGCTCAGCCTGAGG
 AAGAAAGGCTGGAGTGCCTCGTGTCCATTCTCAAGTGCATGGTGGAGTGGAGCAAAAGACCTGTATGTGA
 ATCCCAACCACCAGACCAGCCTCGGT CAGGAGAGGCTCACGGATCAGGAAATAGGGGATGGGAAAGGCT
 TGACATGGCAAGACGGTGTAGTGTGACGTCCATGGAGTCCACAGTGTCTCGGGACCCAGACAAGTGT
 CAGGATGACCCTGAGCAATTTGAGTCAAGCAACAAAAAGAAATCATTGAACACGGCATCGAGCTGT
 TCAACAAGAAACCAAGAGGGGATCCAGTTTCTCCAGGAGCAGGCATGCTGGGAACGTAGTTGAAGA
 CATAGCCCAATCCTGCACCAGGAGGAGCGCTGGATTCCACCCAAGTAGGCGATTTTCTGGGAGATAGC
 GCAAGGTTCAACAAGGAGGTGATGTATGCCTACGTGGACCAACTTGACTTCTGTGAAAAAGAAATTTGCT
 CAGCCCTGCGGACATTCCTAGAAGGTTTCCGCCTACCTGGAGAAGCCAAAAGATTGACCGATTAATGGA
 GAAGTTTGCCGCAAGATACATAGAATGCAACCAAGGGCAAACCTGTGTTGCTAGTGTGACTGCTTAT
 GTCCTAGCGTATTCAATTATTATGCTGACTACAGACTTGACAGTCTCAGGTAAAAATAAAATGACGA
 AAGAGCAGTATATTAATGAATCGGGTATCAATGATAGTAAAGATCTGCCAGAAGAGTATCTCTCAAG
 CATCTATGAAGAGATAGAAGCAAGAAAATTGCAATGAAAGAAACAAAAGAGCTAACGATTGCAACCAAA
 TCTACTAAGCAGAATGTAGCTAGTGAAGCAGCGGGCTGCTGTACAACCTTAGAGATGGAGCAAAATGG
 CTAACAAAGCAGCAAGCTCTGATGGAGGCTGTGAGCCATGCCAAAGCCCGTTTACCAGTGCCACTCACCT
 GGACCATGTCCGGCAATGTTCAAACCTGGTGTGGACGCCACTATTGGCAGCCTACAGCATCGGACTCCAG
 AACTGTGATGACTGAAGTGGCTCCTGTGTTTGAAGGCAATCCGATGTGCAATCCGAATCGCCTGCA
 TCTTTGGAATGCAGTGGAAACGAGATGCCTATGTT CAGGCTCTTGCTCGCTTCTCCCTACTCACAGCCAG
 CTCCAGCATCACAGAAATGAAGCAGAAAAACATCGACACCATTAGACGCTTATCACAGTGGCTCACACC
 GATGGCAACTACCTTGGGAATCCTGGCATGAGATCTTGAAATGCATCAGCCAGCTGGAGCTCGCTCAGC
 TGATAGGAACCGGTGTGAAGACGCGCTACCTGTCTGGATCTGGGCGTGAAGAGAAAGGCTGAAGGG
 CCACACATTTGGCAGGAGAAGAGTTTATGGGCTTGGCCTCGGTAATTTGGTGTAGTGGCGGATGGATAAA
 AGACAGATGGCCAGCTTCCAAGAATCGGTTGGTGTGAGACCAGCTCGCAGAGTGTGGTTGTAGCTGTGGACA
 GGATTTTTACTGGGTCTACCAGACTGGATGAAAATGCAATAGTTGACTTTGTCCGCTGGCTGTGTGCTGT
 GTCATGGATGAACTGGCTTCCCCCACCATCCTCGCATGTT CAGCTTGCAAGATTGTGGAGATATCA
 TACTACAACATGAATCGGATCCGACTACAGTGGTCTCGAATATGGCATGTGATTGGAGATCACTTCAATA
 AGGTTGGCTGCAACCCTAATGAAGATGTGGCTATCTTTGCTGTTGACTCATTAGGCAACTCTCCATGAA
 GTTTCTTGAGAAGGTGAATTAGCCAATCCGTTTCCAGAAAGATTTTCTGAGGCCCTTTGAGCATATT
 ATGAAGAAAAACAGGTCTCCACCATCCGGGACATGGCGATCCGCTGCATTGCCAGATGGTGAACCTCC
 AGGCGGCCAACATCCGCTCAGGTTGGAAGAACATCTTTGCGGTGTTCCACCAGGCAGCCTCTGATCATGA
 TGGGAACATTGTGGAGCTGGCCTTCCAGACCATTGCCACATTGTCACAACATTTTTCCAGCACCATTTT
 CCTGCAGCCATCGATTCTTT CAGGATGCTGTGAAGTGTATCAGAGTTCGCTGCAACGCCGCTTTCC
 CTGACACGAGCATGGAAGCGATTCCGCTCATCCGCTTCTGTGGCAAAATACGTCTCTGAGAGGCTCGGGT
 GCTACAAGAATACACAAGTGTGACATGAATGTAGCTCCTGGTGACAGAGTCTGGGTCGAGGCTGGTTC
 CCCATCTTATTCGAACTCCTGCATCATTAAATAGATGCAAGTTAGATGTACGAACAAGGGGACTCACAG
 TCATGTTTGAGATCATGAAGAGCTATGGCCACACCTTTGAAAAGCACTGGTGGCAGGACCTGTT CAGAAT
 CGTGTTTCGGATTTTGGACAATATGAAACTCCCTGAGCAACTGTCAGAGAAATCTGAGTGGATGACAACA
 ACCTGCAATCACGCACTTATGCTATTTGTGATGTTTTTACCAGTTTTTATGAAGCTTTGAATGAAGTTC
 TTCTTTCTGATGATTTGCACAATTGCAGTGGTGTGTCAAACAAGATAATGAACAGTTGGCGCGATCAGG
 TACAAATTGCTTAGAAAACCTTAGTAATATCCAATGGAGAGAAAATCAGTCTGAAGTCTGGGATGAAACC
 TGCAACTGTATGTTGGATATTTTCAAACAACCATCCACATGTTTTGCTGACATGGAGACCTGTAGGAA
 TGGAGGAAGATTCATCAGAAAAGCATTGGATGTGGATCTGGACCAGTCTTTAAGCAGCATAGATAA
 AAATCCCTCTGAGAGGGACAGAGCCAGCTCTCTAACCAACAGATGACAGCTGGAAGGGTAGACCATAC
 GCAAAATCAGAAACTGTTTCCAGCCTCCTCATCAAGTGTGTGGTCCAGTTGGAATTGATACAGACCATTG
 ACAACATTGTGTTCTACCCTGCGACGAGCAAAAAGGAGGATGCAGAGCACATGGTTGCCGCCAGCAAGA
 CAGCTGGATGCAGATATCCACATAGAGACGGAGGATCAGGGCATGTATAAGTACATGTCTTCCAGCAC
 CTCTTCAAGCTGTTGGACTGTTTGCAGGAATCCCATTCATTCTCAAGGCCTTCAACTCCAATTACGAGC
 AGCGGACTGTCTGTGGCGAGCAGGTTTTAAGGGCAAGTCTAAACCCAATCTTCTAAAACAAGAAACCAG
 CAGCTGGCCTGTTGTTTGGAGTCTGTTTCCAAATGATGTTGATGAGAACCGCAGGGATTCTGGGAA
 GAAATACAGCAGAGACTTTAACTGTTTGCAGTGAAGCTTGGCTATTTTCATCACTGTGAATTTCTGAGA

GCCATCGGGAGGCTGGACAAGTCTTGTGTTACTTCTAACTAAAACCTCAAATAAATGATGAAAA
 GTTCAAAGCACATGCTTCAATGTACTACCCTACTTGTGTGAAATTATGCAGTTTGACCTGATCCCTGAG
 CTCGAGCAGTTCTGCGGAAGTCTTCTACGGATAGGTGTTGTGATAAGATATGGATACCAGAAGAGC
 CATCACAGGTACCAGCAGCACTGTACCAGTGTGG

ACGCGTACGCGGCGCTCGAG - GFP Tag - GTTTAA

Protein Sequence:

>RG216885 representing NM_006420
 Red=Cloning site Green=Tags(s)

MQESQTKSMFVSRALKEILADKEVKRPQHSQLRACQVALDEIKAEIEKQRLGTAAPPKANFIEADKYFL
 PFELACQSKSPRVVSTSLDCLQKLIAYGHITGNAPDSGAPGKRLIDRIVETICSCFQGPQTEDEGVQLQII
 KALLTAVTSPHIEIHEGTILQTVRTCYNILASKNLINQTTAKATLTQMLNVIFTRMENQVLQEAARELEK
 PIQSKPQSPVIQAAAVSPKFVRLKHSQAQSKPTTPEKTDLTNGEHARSDSGKVSTENGAPRERGSSLSG
 TDDGAQEVVKDILEDVVTSAIKEAAEKHGLTEPERVLGELECECAIPPGVDENSQTNGIADDRQSLSSA
 DNLESDAQGHQVAARFVSHVLQKDAFLVFRSLCKLSMKPLGEGPPDPKSHELRSKVVSQLLLLSVLQNAGP
 VFRTHEMFINAIKQYLCVALSKNGVSSVPDFELSLAIFLTLNFKMHLKMQIEVFFKEIFLNILETST
 SSFEHRMVIQTLTRICADAQCVDIYVNYDCDLNANIFERLVNDLSKIAQGRSGHELGMTPLQELSLR
 KKGLECLVSIKCMVEWSKDLVYVNPQHQTSLGQERLTDQEIQDGLDMARRCSVTSMESTVSSGTQTTV
 QDDPEQFEVIKQKEIIEHGIELFNKKPKRGIQFLQEQGMLGTSVEDIAQFLHQEERLDSTQVGFGLGDS
 ARFNKEVMYAYVDQDFCEKEFVSALRTFLEGFRLPGEAQKIDRLMEKFAARYIECNQGGTFLASADTAY
 VLAYSIIMLTDDLHSPQVKNKMTKEQYIKMNRGINDSKDLPEEYLSIIYEEIEGKKIAMKETKELTIATK
 STKQNVASEKQRLLYNLEMEQMAKTAKALMEAVSHAKAPFTSATHLDHVRPMPKLVWTPLLAAYSIGLQ
 NCDDTEVASLCEGIRCAIRIACIFGMQLERDAYVQALARFSLLTASSITEMKQKNIDTIKTLITVAHT
 DGNYLGNWHEILKCSQLELAQLIGTVKTRYLSGSGREREGSLKGHTLAGEEFMGLGLGNLVSGGVDK
 RQMASFQESVGETSSQSVVAVDRIFTGSTRLDGNAIVDFVRLCAVSMDELASPHHPRMFLSQKIVEIS
 YYNMNRIRLQWSRIWHVIGDHFNVGCPNEDVAIFAVDSLRLQSMKFLEKGEANFRFQKDFLRPFELI
 MKKNRSPITRDMAIRCIAQMVNSQAANIRSGWKNIFAVFHQAASDHDGNIVELAFQTTCHIVTTIFQHFF
 PAAIDSFQDAVKCLSEFACNAAFPDTSMIAIRLIRFCGYYSERPRVLQEYTSDDMNVAPGDRVWVRGWF
 PILFELSCIIINRCKLDVTRGLTVMFEIMKSYGHTFEKHWWQDLFRIVFRIFDNMMLPEQLSEKSEWMTT
 TCNHALYAIQDVFTQFYEALNEVLLSDVFAQLQWCVKQDNEQLARSGTNLENLVISNGEKFSPEVWDET
 CNCMLDIFKTTIPHVLLTWRPVGMEEDSSEKHLVDLDRQSLSSIDKNPSEGRQSQLSNPTDDSWKGRPY
 ANQKLFASLLIKCVVQLELIQTIDNIVFYPATSKKEDAHEMVAQAQDLDADIIHETEDQGMKYMSSQH
 LFKLLDCLQESHFSKAFNSNYEQRTVLWRAGFKGKSKPNLLKQETSSLACCLRILFRMYVDENRRDSWE
 EIQQRLLTVCSEALAYFITVNSESHREAWTSLLLLLLTKLTKINDEKFKAHASMYYPYLCEIMQFDLPIE
 LRAVLRKFFLRIGVVYKIWIPEEPSQVPAALSPVW

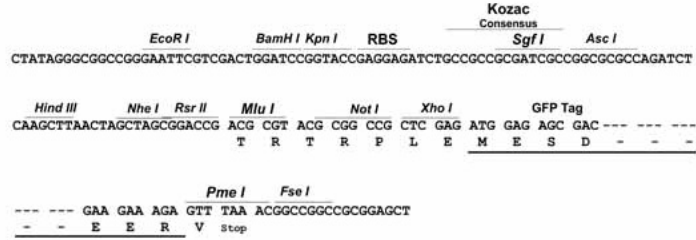
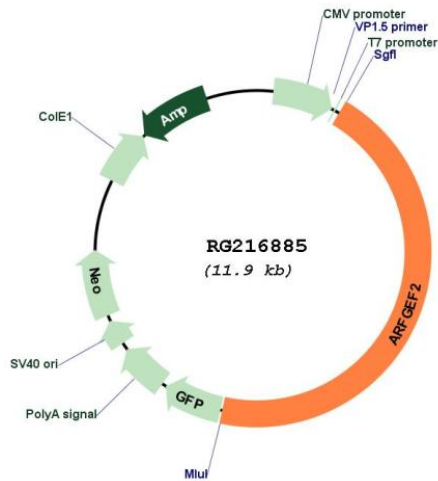
TRTRPLE - GFP Tag - V

Restriction Sites:

Sgfl-MluI

Cloning Scheme:

Cloning sites used for ORF Shutting:


Plasmid Map:


ACCN:	NM_006420
ORF Size:	5355 bp
OTI Disclaimer:	The molecular sequence of this clone aligns with the gene accession number as a point of reference only. However, individual transcript sequences of the same gene can differ through naturally occurring variations (e.g. polymorphisms), each with its own valid existence. This clone is substantially in agreement with the reference, but a complete review of all prevailing variants is recommended prior to use. More info
OTI Annotation:	This clone was engineered to express the complete ORF with an expression tag. Expression varies depending on the nature of the gene.
Components:	The ORF clone is ion-exchange column purified and shipped in a 2D barcoded Matrix tube containing 10ug of transfection-ready, dried plasmid DNA (reconstitute with 100 ul of water).
Reconstitution Method:	<ol style="list-style-type: none">1. Centrifuge at 5,000xg for 5min.2. Carefully open the tube and add 100ul of sterile water to dissolve the DNA.3. Close the tube and incubate for 10 minutes at room temperature.4. Briefly vortex the tube and then do a quick spin (less than 5000xg) to concentrate the liquid at the bottom.5. Store the suspended plasmid at -20°C. The DNA is stable for at least one year from date of shipping when stored at -20°C.
RefSeq:	NM_006420.3
RefSeq Size:	9004 bp
RefSeq ORF:	5358 bp
Locus ID:	10564
UniProt ID:	Q9Y6D5
Cytogenetics:	20q13.13
Gene Summary:	ADP-ribosylation factors (ARFs) play an important role in intracellular vesicular trafficking. The protein encoded by this gene is involved in the activation of ARFs by accelerating replacement of bound GDP with GTP and is involved in Golgi transport. It contains a Sec7 domain, which may be responsible for its guanine-nucleotide exchange activity and also brefeldin A inhibition. [provided by RefSeq, Jul 2008]