

Product datasheet for **RG216879**

BRD4 (NM_014299) Human Tagged ORF Clone

Product data:

Product Type:	Expression Plasmids
Product Name:	BRD4 (NM_014299) Human Tagged ORF Clone
Tag:	TurboGFP
Symbol:	BRD4
Synonyms:	CAP; HUNK1; HUNKI; MCAP
Mammalian Cell Selection:	Neomycin
Vector:	pCMV6-AC-GFP (PS100010)
E. coli Selection:	Ampicillin (100 ug/mL)



[View online »](#)

ORF Nucleotide Sequence:

>RG216879 representing NM_014299
 Red=Cloning site Blue=ORF Green=Tags(s)

TTTTGTAATACGACTCACTATAGGGCGGCCGGAATTCGTCGACTGGATCCGGTACCGAGGAGATCTGCC
 GCC**CGGATCGCC**

ATGCTCGGGAGAGCGGCCCTGGGACGAGATTGAGAAATCTGCCAGTAATGGGGATGGACTAGAACTT
 CCCAAATGTCTACAACACAGGCCAGGCCAACCCAGCCAGCCAACGCAGCCAGCACCACCCCGCC
 CCCAGAGACCTCCAACCCTAACAAAGCCCAAGAGGCAGACCAACCAACTGCAATACCTGCTCAGAGTGGT
 CTAAGACACTATGGAACACCAGTTTGCATGGCCTTCCAGCAGCCTGTGGATGCCGTCAGACTGAACC
 TCCCTGATTACTATAAGATCATTAAAACGCCTATGGATATGGGAACAATAAAGAAGCGCTTGAAAAACA
 CTATTACTGGAATGCTCAGGAATGTATCCAGGACTTCAACTATGTTTACAAATGTTACATCTACAAC
 AAGCTGGAGATGACATAGTCTTAATGGCAGAAGCTCTGAAAAGCTCTTCTGCAAAAAATAAATGAGC
 TACCCACAGAAGAACCGAGATCATGATAGTCCAGGCAAAAGGAAGAGGACGTGGGAGGAAAGAACAGG
 GACAGCAAAACCTGGCGTTTCCACGGTACCAACACAACCTCAAGCATCGACTCCTCCGAGACCCAGACC
 CCTCAGCCGAATCCTCCTCTGTGCAGGCCACGCCTCACCCCTTCCCTGCCGTACCCCGGACCTCATCG
 TCCAGACCCCTGTGATGACAGTGGTGCCTCCCCAGCCACTGCAGACGCCCCCGCCAGTGCACCCCGAGCC
 ACAACCCACCCCGCTCCAGTCCCCAGCCGTACAGAGCCACCCACCCATCATCGCGGCCACCCACAG
 CCTGTGAAGACAAAGAAGGGAGTGAAGAGGAAAGCAGACACCACCCACCCACCCATTGACCCATTC
 ACGAGCCACCCCTCGTGCCCGGGAGCCCAAGACCACCAAGCTGGGCCAGCGGGGAGAGCAGCCGGCC
 TGTGAAACCTCCAAGAAGGACGTGCCCGACTCTCAGCAGCACCAGCACCAGAGAAGAGCAGCAAGGTC
 TCGGAGCAGCTCAAGTCTGCAGCGCATCCTCAAGGAGATGTTTGCCAAGAAGCACGCCGCTACGCT
 GGCCCTTCTACAAGCCTGTGGACGTGGAGGCACTGGGCCTACACGACTACTGTGACATCATCAAGCACCC
 CATGGACATGAGCACAATCAAGTCTAAACTGGAGGCCCGTGAGTACCGTGATGCTCAGGAGTTTGGTGCT
 GACGTCGGATTGATGTTCTCAACTGCTATAAGTACAACCCTCCTGACCATGAGGTGGTGGCCATGGCCC
 GCAAGCTCCAGGATGTGTTGCAATGCGCTTTGCCAAGATGCCGGACGAGCCTGAGGAGCCAGTGGTGGC
 CGTGTCTCCCGGAGTGCCTCCACCAAGGTTGTGGCCCGCCCTCATCCAGCGACAGCAGCAGC
 GATAGCTCCTCGGACAGTACAGTTCGACTGATGACTCTGAGGAGGAGCGAGCCAGCGGCTGGCTGAGC
 TCCAGGAGCAGCTCAAAGCCGTGCAGGAGCAGCTTGCAGCCCTCTCAGCCCCAGCAGAACAACCAAA
 GAAAAAGGAGAAAGACAAGAAGGAAAAGAAAAAGAAAAGCACAAGAAAAGAGGAAGTGAAGAGAAT
 AAAAAAGCAAAGCCAAGGAACCTCCTCTAAAAAGACGAAGAAAATAATAGCAGCAACAGCAATGTGA
 GCAAGAAGGAGCCAGCGCCATGAAGAGCAAGCCCTCCACGTATGAGTCGGAGGAAGAGGACAAGTG
 CAAGCCTATGTCTATGAGGAGAAGCGGACGCTCAGCTTGGACATCAACAAGCTCCCGGCGAGAAGCTG
 GGCCGCGTGGTGCACATCATCCAGTACGGGAGCCCTCCTGAAGAATCCAACCCGACGAGATTGAAA
 TCGACTTTGAGACCCTGAAGCCGTCCACTGCGTGAGCTGGAGCGCTATGTCACCTCCTGTTTGGCGAA
 GAAAAGGAAACCTCAAGCTGAGAAAGTTGATGTGATTGCCGGCTCCTCCAAGATGAAGGGCTTCTCGTCC
 TCAGAGTCGGAGAGCTCCAGTGAAGTCCAGCTCCTGACAGCGAAGACTCCGAAACAGGTCTCTGCC

ACGCGTACGCGGCCGCTCGAG - GFP Tag - GTTTAA

Protein Sequence: >RG216879 representing NM_014299
 Red=Cloning site Green=Tags(s)

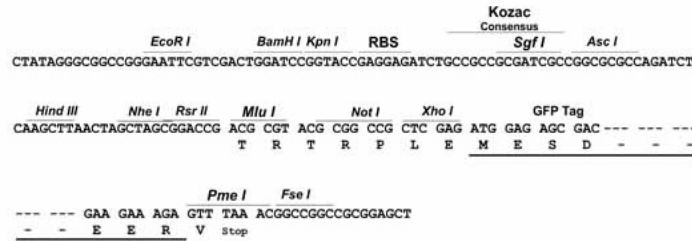
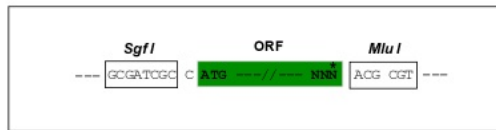
```
MSAESGPGTRLRNLVPMGDGLETSMSTTQAQAQPANAASTNPPPPETSNPNKPKRQTNLQYLLRVV
LKTLWKHQFAWPFQQPVDVAVKLNLPDYKIIKTPMDMGTIKKRLNNYYWNAQECIQDFNTMFTNICYIYN
KPGDDIVLMAEAEKLFQKINELPTEETEIMIVQAKGRGRGRKETGTAKPGVSTVPNTTQASTPPQTQT
PQPNPPPQATPHPPFAVTPDLIVQTPVMTVVPPQLQTTPPPVPPQPQPPAPAPQPVQSHPPIIAATPQ
PVKTKKGVKRKADTTTPTTIDPIHEPPSLPPEPKTTKLGQRRESSRPVKPPKDVPSQQHPAPEKSSKV
SEQLKCCSGILKEMFAKKHAAYAWPFYKPDVEALGLHDYCDIIKHPMDMSTIKSKLEAREYRDAQEFGA
DVRLMFSNCYKYNPPDHEVVAMARKLQDVFEMRFKMPDEPEEPVAVSSPAVPPPTKVVAPPSSSDSSS
DSSSDSDSSTDDSEEERAQRLAELQEQLKAVHEQLAALSQPQONKPKKKEKDKKEKKEKHKRKEEVEEN
KKSKAKEPPPKTKKNNSSNSNVSKKEPAPMKSKPPPTYESEEDKCKPMSYEEKRQLSLDINKLPGEKL
GRVVHIIQSREPSLKNSNPDEIEIDFETLKPSTLRELERVVTSLRKKRKPQAEKVDVIAGSSKMGFSS
SESESSSESSSDSEDSETGPA
```

TRTRPLE - GFP Tag - V

Restriction Sites: SgfI-MluI

Cloning Scheme:

Cloning sites used for ORF Shutting:

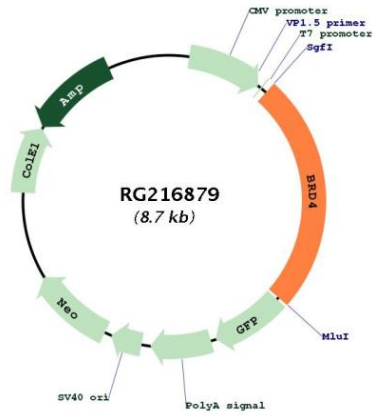


ACCN: NM_014299

ORF Size: 2166 bp

OTI Disclaimer:	<p>Due to the inherent nature of this plasmid, standard methods to replicate additional amounts of DNA in E. coli are highly likely to result in mutations and/or rearrangements. Therefore, OriGene does not guarantee the capability to replicate this plasmid DNA. Additional amounts of DNA can be purchased from OriGene with batch-specific, full-sequence verification at a reduced cost. Please contact our customer care team at custsupport@origene.com or by calling 301.340.3188 option 3 for pricing and delivery.</p> <p>The molecular sequence of this clone aligns with the gene accession number as a point of reference only. However, individual transcript sequences of the same gene can differ through naturally occurring variations (e.g. polymorphisms), each with its own valid existence. This clone is substantially in agreement with the reference, but a complete review of all prevailing variants is recommended prior to use. More info</p>
OTI Annotation:	This clone was engineered to express the complete ORF with an expression tag. Expression varies depending on the nature of the gene.
Components:	The ORF clone is ion-exchange column purified and shipped in a 2D barcoded Matrix tube containing 10ug of transfection-ready, dried plasmid DNA (reconstitute with 100 ul of water).
Reconstitution Method:	<ol style="list-style-type: none"> 1. Centrifuge at 5,000xg for 5min. 2. Carefully open the tube and add 100ul of sterile water to dissolve the DNA. 3. Close the tube and incubate for 10 minutes at room temperature. 4. Briefly vortex the tube and then do a quick spin (less than 5000xg) to concentrate the liquid at the bottom. 5. Store the suspended plasmid at -20°C. The DNA is stable for at least one year from date of shipping when stored at -20°C.
RefSeq:	NM_014299.1 , NP_055114.1
RefSeq Size:	3149 bp
RefSeq ORF:	2169 bp
Locus ID:	23476
UniProt ID:	O60885
Cytogenetics:	19p13.12
Protein Families:	Protein Kinase
Gene Summary:	<p>The protein encoded by this gene is homologous to the murine protein MCAP, which associates with chromosomes during mitosis, and to the human RING3 protein, a serine/threonine kinase. Each of these proteins contains two bromodomains, a conserved sequence motif which may be involved in chromatin targeting. This gene has been implicated as the chromosome 19 target of translocation t(15;19)(q13;p13.1), which defines an upper respiratory tract carcinoma in young people. Two alternatively spliced transcript variants have been described. [provided by RefSeq, Jul 2008]</p>

Product images:



Circular map for RG216879