

Product datasheet for **RG216859**

SIN3B (NM_015260) Human Tagged ORF Clone

Product data:

Product Type:	Expression Plasmids
Product Name:	SIN3B (NM_015260) Human Tagged ORF Clone
Tag:	TurboGFP
Symbol:	SIN3B
Mammalian Cell Selection:	Neomycin
Vector:	pCMV6-AC-GFP (PS100010)
E. coli Selection:	Ampicillin (100 ug/mL)
ORF Nucleotide Sequence:	>RG216859 representing NM_015260 Red=Cloning site Blue=ORF Green=Tags(s)

TTTTGTAATACGACTCACTATAGGGCGGCCGGGAATTCGTCGACTGGATCCGGTACCGAGGAGATCTGCC
GCC**CGATCGCC**

ATGGCGCACGCTGGCGGTGGCAGCGGTGGCAGCGGTGCCGGCGGCCCGCGGGCCGGGGCTGAGCGGCG
CCCCTGGGGTCGCTCGGGCTCCGCAGGCCACGAGAAGCTGCCGGTGCACGTAGAAGACGCCCTCACCTA
TCTGGACCAGGTGAAGATCCGCTTTGGCAGCGACCCTGCCACCTACAACGGCTTCTCGAGATCATGAAG
GAGTTCAAAGCCAGAGCATCGATACTCCTGGAGTCATCAGACGTGTCTCGCAGCTTCCACAGGACCA
CTGACCTATTGTTGGATTCAACGCTTTTCTTCCCCTCGGATATAGAATAGACATTCCTCAAGAATGGCAA
GTTAAACATACAGTCGCCTCTGACAAGCCAGGAGAATTCGCACAACCACGGGGACGGTGCAGAGGACTTC
AAGCAGCAGGTGCCGTATAAAGAGGACAAACCCAGGTGCCCTGGAGTCCGATTCCGTGGAATTAACA
ACGCCATCAGCTATGTGAATAAGATTAACCCGCTTCTAGACCACCCAGAAATCTACAGGTATTCTCT
GGAGATCCTGCACACGTACCAGAAGGAGCAGCTGAACACGAGGGGCCGCCATTCCGAGGCATGTCTGAA
GAGGAGGTGTTACCCGAGGTGGCAACCTTCCGGGGCCAGGAGGACCTGCTCTCAGAGTTTGGACAGT
TCCTGCCCGAAGCCAAGCGGTCTCTGTTACAGGAAACGGGCCGTGCGAGATGCACAGCTGCAGAAGAA
CGAGCACGACAAGACCCCGGAGCACAGCAGGAAGCGCTCCCGGCCCTCGCTCTCCGCCCGTGTCTGCA
CCCGCCAAGAAAAAATGAAACTTCGTGGTACCAAGACCTGTCCATCGTGCAGTGGGGAAGTACGGGA
CTCTGCAGGAATTTCTTTCTTTGACAAGTCCGCGGGTGTGAAGAGCCAGGAGGTGTATGAAAATTT
CCTCCGCTGCATCGCACTCTTAACCAGGAGCTGGTGTCTGGCTCTGAGCTCCTGCAGCTCGTCAGCCCA
TTTCTGGGGAATTTCCAGAACTCTTTCACAGTTCAGTCTTCTGGGGTAAAGAGCTGTCCTTTCG
CGCCACCCATGAGCGACAGATCCGGGGACGGGATAAGCCGGGAAATGATTATGCATCCTGCAAGCGCAT
AGGATCCAGCTACCGGCACTCCCAAAACCTACCAGCAGCCAAAGTGCAGTGGGAGGACAGCCATCTGC
AAGGAGCTTGACCATTGGACACTTCTCCAGGTTCTGGACAGACGATTACTGCATGTCCAAGTTCAAGA
ATACCTGCTGGATTCCAGGATATAGTGCAGGGTACTGAACGACACCTGGGTCTCCTTCCCTTCTGGTC
TGAGGACTCCACGTTTCGTCAGCTCCAAGAAGACACCGTACGAGGAGCAGCTTCCCGCTGTGAGGACGAG
CGCTTCGAGTTAGACGTTGTCTGGAGACGAACCTGGCCACAATCCGTGTGTTGGAAGTGTGCAGAAGA
AGCTGTCTCGGATGGCGCCGAAGACCAGGAGAAGTCCGGCTGGACGACTCCCTGGGAGGCACGTCGGA



[View online »](#)

GGTGATCCAGCGCCGTGCCATTTATCGCATCTATGGCGACAAGGCCCGGAGATCATCGAGAGCCTCAAG
 AAGAACCCTGTCACCGCTGTCCCGTTGTCTGAAAAGACTGAAGGCCAAGGAAGAGGAGTGGCGGGAGG
 CCCAGCAGGGCTTCAACAAGATCTGGCGGGAGCAGTATGAGAAGGCGTACCTCAAGTCCCTTGACCACCA
 GGCTGTGAACTTCAAGCAGAACGACACCAAGGCCCTGCGCTCAAAGAGCTTGCTCAACGAGATCGAGAGC
 GTCTACGACGAGCACCAGGAGCAGCACTCGGAGGGCCGAGTCCCCCTTAGCGAGCCGCACCTCATCT
 TTGTGTACGAGGACCGGCAGATCCTGGAGGACGACGAGCGCTCATCAGTACTACGTGAAGCGGACGCC
 GGCCATCCAGAAGGAGGACCAGGGCACCATCCACCAGTGTGCACCAGTTCGTGCCAGCCTCTTCTTC
 TCTCAGCAGCTGGACCTGGGCGCCTCCGAGGAGTCAAGTGTGATGAGGACCGGGACAGCCCCAGGGGAGA
 CCACAGACCCAGTGAGCGGAAGAAGCCGGCGCCAGGACCCACAGTAGCCCCCAGAGGAGAAGGGGGC
 CTTGCGGGATGCCCGGCCACTGAGCAGCCACCCTGCCGCCCCAGCCCCGACAAGCCCTGGACGAT
 GTCTACAGCCTATTTTTGCCAACAACAACTGGTACTTCTTCTGCGCCTGCACCAGACCCTGTGCTCCA
 GGCTGCTGAAGATCTACCGCCAGGCGCAGAAGCAGCTTCTGGAGTATCGGACCGAGAAGGAGCGGGAGAA
 GCTGCTGTGTGAGGGCCGAGGGAGAAGGGCAGCGACCCCGCCATGGAGTGCAGGCTGAAGCAGCCAGT
 GAAGTGGAGCTGGAGGAGTACTACCGGCCTTCTGGACATGGTGGGAGCCTGTGGAGGGCAGCATCG
 ACCCCACGAGTACGAGGACACCCTACGCGAGATGTTACCATCCATGCCTACGTGGGCTTACCATGGA
 CAAGCTGGTGCAGAACATTGCGCGGCAGCTGCACCACCTCGTGAGCGATGACGTCTGCCTGAAGGTGGT
 GAGCTCTACCTGAACGAGAAGAAGCGGGGTGCCGCTGGTGGGAACCTGTCTCCCGCTGCGTCCGCGCTG
 CTAGGGAGACCAGCTACCAGTGAAGGCTGAGCGCTGCATGGCCGACGAGAACTGCTTCAAGGTGATGTT
 CCTGCAGCGCAAAGGGCAGGTGATCATGACCATCGAGCTCCTGGACACCGAGGAGGCCAGCAGGGAGGAC
 CCTGTGGAGGTCCAGCACCTGGCTCGGTACGTGGAGCAGTATGTGGGGACCGAGGGCGCGTCCAGCTCGC
 CCACTGAGGGCTTCTCCTGAAACCTGTGTTCTGCAGAGGAACCTCAAGAAGTCCGCCCGCGTGGCA
 GAGCGGACAGGCGCGGGCCCTGCGCGGTGAGGCCAGGAGCTCCTGGAAGCGGCTGGTGGCGTGGAGAGC
 GCCTGCGACGTGGACTGCCGCTTCAAGCTCAGCACTACAAGATGGTGTTCATCGTGAACCCGAGAGT
 ACATGTACCGTCCGCGGGACCCTCTGCCGGCCAAAGCAGGTGCAGCCCTGGTCTGCTCCGCCACCACCA
 GCACTTTGAGGAGTGGCAGCCGCTGGCTGGAGGACAATGTGACGGTGGAGGCGGCTAGCCTGGTGCAG
 GACTGGCTGATGGGTGAGGAGGACGAGGACATGGTACCCTGCAAGACGCTGTGTGAGACAGTGCACGTGC
 ACGGCCTGCCCGTACCCGCTACCGCGTGCAGTACAGCCGCCCGCCGCGCTCGCC

ACGCGTACGCGGGCCGCTCGAG – GFP Tag – GTTTAA

Protein Sequence:

>RG216859 representing NM_015260
 Red=Cloning site Green=Tags(s)

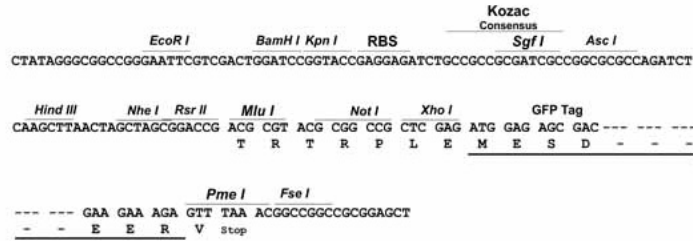
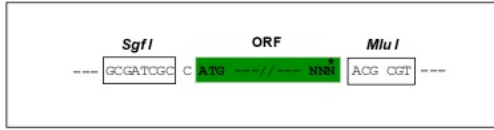
MAHAGGSGGSGAGGPPAGRGLSGARWGRSGSAGHEKLPVHVEDALTYLDQVKIRFGSDPATYNGFLEIMK
 EFKSQSIDTPGVIRRVSQLFHEHPDLIVGFNAFLPLGYRIDIPKNGKLNISPLTSQENSHNHGDGAEDF
 KQQVVPYKEDKQPVPLESDSVEFNNAISYVNKIKTRFLDHPEIYRSFLEILHTYQKEQLNTRGRPFGRMSE
 EEVFTEVANLFRGQEDLLSEFGQFLPEAKRSLFTGNGPCMHVSQKNEHDKTPEHSRKRSRPSSLRPVSA
 PAKKKMKLRGTDLSIAAVGKYGTLEQFSFFDKVRRVLKSQEVYENFLRCIALFNQELVSGSELLQLVSP
 FLGKFPFLFAQFSLGKELSFAPPMSDRSGDGSREIDYASCKRIGSSYRALPKTYQQPKCSGRTAIC
 KELDHWTLQGSWTDYCMKFKNTCWIPGYSAGVLDNWTWVSFSPWSEDSTFVSSKTKPYEEQLHRCDE
 RFELDVVLETNLATIRVLESVQKLSRMAPEDQEKFRLLDLSGGTSEVIQRRAIYRIYGDKAPEIIESLK
 KNPVTAVPVVLKRLKAKEEEWREAQQGFNKIWRQYKAYLKSLDHQAVNFKQNDTKALRSKSLNEIES
 VYDEHQEQHSEGRSAPSSEPHLIFVYEDRQILEDAAALISYYVKRQPAIQKEDQGTIHQLLHQFVPSLFF
 SQQLDLGASEESADEDSPQGGTTDPSEKPKPAPGPHSSPPEEKGAFGDAPATEQPPLPPPAPHKPLDD
 VYSLFFANNWYFFLRLHQTLCSRLKLIYRQAQQLLEYRTEKEREKLLCEGRREKGSDPAMELRKQPS
 EVELLEEYPAFLDMVRSLLLEGSIDPTQYEDTLREMFTIHAYVGF TMDKLVQNIARQLHHLVSDDVCLKVV
 ELYLNEKKRGAAGNLSRVCRAARETSYQWKAERCMADENCFKVMFLQRKGVIMTIELLDTEEAQTED
 PVEVQHLARYVEQYVGTGASSPTEGFLKPVFLQRNLKFRRRWQSEQARALRGEARSSWKRLVGVES
 ACDVDCRFKLSHKMVFIVNSEDYMYRRGTL CRAKQVQPLVLLRHHQHFEWHSRWLEDNVTVEAASLVQ
 DWLMGEEDEDMVPCKTL CETVHVHGLPVTRYRVQYSRRPASP

TRTRPLE – GFP Tag – V

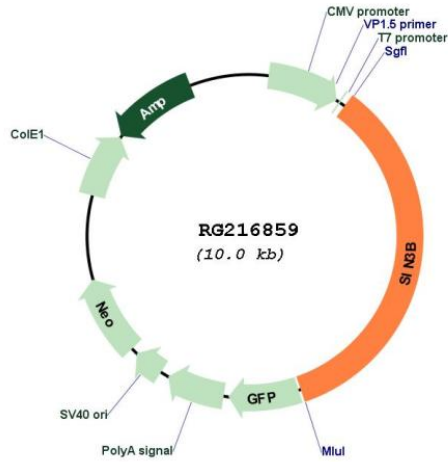
Restriction Sites: SgfI-MluI

Cloning Scheme:

Cloning sites used for ORF Shutting:



Plasmid Map:



ACCN: NM_015260

ORF Size: 3486 bp

OTI Disclaimer: Due to the inherent nature of this plasmid, standard methods to replicate additional amounts of DNA in E. coli are highly likely to result in mutations and/or rearrangements. Therefore, OriGene does not guarantee the capability to replicate this plasmid DNA. Additional amounts of DNA can be purchased from OriGene with batch-specific, full-sequence verification at a reduced cost. Please contact our customer care team at custsupport@origene.com or by calling 301.340.3188 option 3 for pricing and delivery.

The molecular sequence of this clone aligns with the gene accession number as a point of reference only. However, individual transcript sequences of the same gene can differ through naturally occurring variations (e.g. polymorphisms), each with its own valid existence. This clone is substantially in agreement with the reference, but a complete review of all prevailing variants is recommended prior to use. [More info](#)

OTI Annotation: This clone was engineered to express the complete ORF with an expression tag. Expression varies depending on the nature of the gene.

Components: The ORF clone is ion-exchange column purified and shipped in a 2D barcoded Matrix tube containing 10ug of transfection-ready, dried plasmid DNA (reconstitute with 100 ul of water).

Reconstitution Method:

1. Centrifuge at 5,000xg for 5min.
2. Carefully open the tube and add 100ul of sterile water to dissolve the DNA.
3. Close the tube and incubate for 10 minutes at room temperature.
4. Briefly vortex the tube and then do a quick spin (less than 5000xg) to concentrate the liquid at the bottom.
5. Store the suspended plasmid at -20°C. The DNA is stable for at least one year from date of shipping when stored at -20°C.

RefSeq: [NM_015260.4](#)

RefSeq Size: 5129 bp

RefSeq ORF: 3489 bp

Locus ID: 23309

UniProt ID: [O75182](#)

Cytogenetics: 19p13.11

Gene Summary: Acts as a transcriptional repressor. Interacts with MXI1 to repress MYC responsive genes and antagonize MYC oncogenic activities. Interacts with MAD-MAX heterodimers by binding to MAD. The heterodimer then represses transcription by tethering SIN3B to DNA. Also forms a complex with FOXK1 which represses transcription. With FOXK1, regulates cell cycle progression probably by repressing cell cycle inhibitor genes expression.[UniProtKB/Swiss-Prot Function]