

Product datasheet for **RG216837**

zinc finger protein 655 (ZNF655) (NM_001083956) Human Tagged ORF Clone

Product data:

Product Type:	Expression Plasmids
Product Name:	zinc finger protein 655 (ZNF655) (NM_001083956) Human Tagged ORF Clone
Tag:	TurboGFP
Symbol:	ZNF655
Synonyms:	VIK; VIK-1
Mammalian Cell Selection:	Neomycin
Vector:	pCMV6-AC-GFP (PS100010)
E. coli Selection:	Ampicillin (100 ug/mL)



[View online »](#)

ORF Nucleotide Sequence:

>RG216837 representing NM_001083956
 Red=Cloning site Blue=ORF Green=Tags(s)

TTTTGTAATACGACTCACTATAGGGCGGCCGGAATTCGTCGACTGGATCCGGTACCGAGGAGATCTGCC
 GCCGCGATCGCC

ATGGAGGAAATACCAGCCAGGAAGCAGCAGGGTCACCAAGGGTCCAGTTTCAGTCTTTGGAGACCCAGT
 CTGAGTGTCTGTCCCAGAGCCTCAGTTTGTGCAGGACACCGACATGGAACAGGGACTCACTGGGGATT
 TCCAATTTCCAAGCCTGATGGGATCTCCCAGCTGGAACAGGATCTACAGGTCTTTGATCTGGAACTAAG
 ACTAGAGAAGTCTTAAGAGATGACTGCTCAGATGGAGAGACCAGAGAAGAGAACAAGCTGTTGATTCTTA
 AGCAGAAAATTTGGAAGAAGTGCATTCATACAAAGTGAAGTAGGAAGACTCAAACACGATATTACCCA
 AGTTCCTGAGACTAGAGAAGTGTATAAGTCTGAGGACAGATTAGAAAGACTTCAGGAAATTTAAGGAAA
 TTTCTGTACCTGGAGAGAGATTAGGCAATAACAATCAGCAAGGAAACCTTCACCAGTGAGAAGAACA
 ATGAATGTCATGAACCCGAAAAAAGCTTCAGTCTGGACTCTACTATTGATGCAGATCAGAGATTCTTAG
 AATACAGAATACCGATGACAATGATAAGTATGACATGAGCTTCAACCAGAATTCAGCCTCTGGTAAACAT
 GAACACTTAAATCTAACAGAGGATTTTCAGAGTAGTGAATGTAAGGAAAGCTTAAATGGATCTCTCCACC
 TTAATAAATGGGAGAGCATCCCTAACACTGAGAAATCCTATAAATGTGATGTATGTGGGAAAAATTTCCA
 TCAGAGCTCAGCCCTTACTAGACATCAGAGAATCCATACTAGAGAGAAGCCCTACAAATGTAAGAATGT
 GAAAAGTCTTTCAGTCAGAGCTCAAGTCTTAGTCGACATAAAAGAATACACACTAGAGAAAAACCTTACA
 AATGTGAAGCATCTGATAAATCCTGTGAAGCGTCTGATAAATCCTGTAGTCCAAGCTCAGGCATAATTCA
 GCATAAGAAAATTCACACCAGAGCCAAATCTTACAAATGTAGCAGTTGTGAAAGAGTCTTCAGTCGATGT
 GTCCACCTTACTCAACATCAGAAAATTCACAAAGAGATGCCCTGTAAGTGTACTGTATGTGGCAGTGACT
 TCTGCCATCTCATACCTACTGAACATCAGAGGGTCCATCATGAAGAGAAAAGCCTATGAGTATGATGA
 ATATGGGTTGGCCTATATTAACAACAAGGAATTCATTTTCAGAGAAAAGCCCTATACGTGTAGTGAATGT
 GGAAAAGACTTCAGATTGAATTCACATCTTATTAGCATCAAAGAATTCACACAGGAGAGAAAGCATG
 AATGTAATGAATGTGGAAAAGCTTTCAGTCAAACCTCATGCCTTATTAGCATCAGAAAATGCATAGGAA
 AGAGAAAATCGTATGAATGTAATGAGTATGAGGGCAGTTTCAGTCATAGCTCAGATCTTATCCTGCAACA
 GAAGTCTCACCAGACAGAAAAGCCTTTGATTGTGATGTATGGGAAAAGAACTCCAGTCAGAGAGCACATC
 TAGTTCAACATCAGAGCATTTCATACCAAGAGAACTCA

ACGCGTACGCGGCCGCTCGAG – GFP Tag – GTTTAA

Protein Sequence:

>RG216837 representing NM_001083956
 Red=Cloning site Green=Tags(s)

MEEIPAQEAAGSPRVQFQSLQSECLSPPEQFVQDQDMEQGLTGGFPI SKPDGISQLEQDLQVFDLETK
 TREVLRDDSDGETREENKLLIPKQKISEEVHSYKVRVGRLLKHDITQVPETREVIKSEDRLERLQEI LRK
 FLYLEREFRQITISKETFTSEKNNECHEPEKSFSLDSTIDADQVLRIQNTDDNDKYDMSFNQNSASGKH
 EHLNLTEDFQSSECKESLMDLSHLNWKESIPNTEKSYKCDVCGKIFHQSSALTRHQRIHTREKPYKCKEC
 EKSFSQSSSLSRHKRIHTREKPYKCEASDKSCEASDKSCSPSSGIIQHKKIHTRAKSYKSCSCEVRSRS
 VHLTQHQQIHKEMPKCTVCGSDFCHTSYLLEHQRVHHEEKAYEYDEYGLAYIKQQGIHFREKPYTCSEC
 GKDFRLNSHLIQHQRIHTGEKAHECNECGKAFSQTSLIQHKKMHRKEKSYECNEYEGSFSSDLILQQ
 EVLTRQKAFDCDVWEKNSSQRAHLVQHQSIIHTKENS

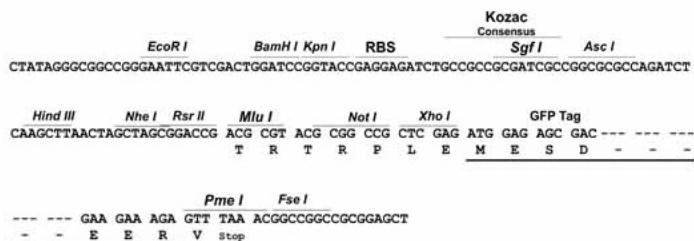
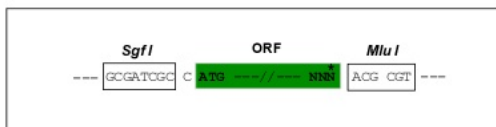
TRTRPLE – GFP Tag – V

Restriction Sites:

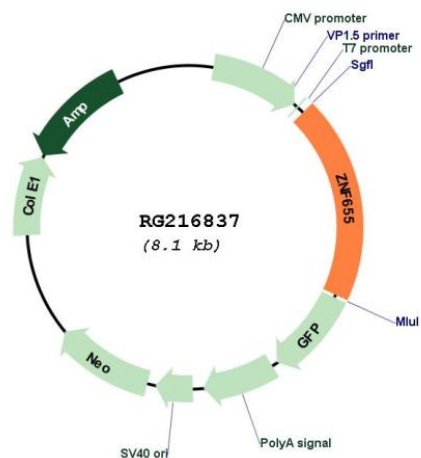
Sgfl-MluI

Cloning Scheme:

Cloning sites used for ORF Shutting:



Plasmid Map:



ACCN:	NM_001083956
ORF Size:	1578 bp
OTI Disclaimer:	The molecular sequence of this clone aligns with the gene accession number as a point of reference only. However, individual transcript sequences of the same gene can differ through naturally occurring variations (e.g. polymorphisms), each with its own valid existence. This clone is substantially in agreement with the reference, but a complete review of all prevailing variants is recommended prior to use. More info
OTI Annotation:	This clone was engineered to express the complete ORF with an expression tag. Expression varies depending on the nature of the gene.
Components:	The ORF clone is ion-exchange column purified and shipped in a 2D barcoded Matrix tube containing 10ug of transfection-ready, dried plasmid DNA (reconstitute with 100 ul of water).
Reconstitution Method:	<ol style="list-style-type: none">1. Centrifuge at 5,000xg for 5min.2. Carefully open the tube and add 100ul of sterile water to dissolve the DNA.3. Close the tube and incubate for 10 minutes at room temperature.4. Briefly vortex the tube and then do a quick spin (less than 5000xg) to concentrate the liquid at the bottom.5. Store the suspended plasmid at -20°C. The DNA is stable for at least one year from date of shipping when stored at -20°C.
RefSeq:	NM_001083956.1 , NP_001077425.1
RefSeq Size:	4863 bp
RefSeq ORF:	1581 bp
Locus ID:	79027
UniProt ID:	Q8N720
Cytogenetics:	7q22.1
Protein Families:	Transcription Factors
Gene Summary:	This gene encodes a zinc finger protein. The zinc finger proteins are involved in DNA binding and protein-protein interactions. Multiple alternatively spliced transcript variants encoding distinct isoforms have been found for this gene. [provided by RefSeq, Jul 2008]