

Product datasheet for **RG216829**

DLK2 (NM_206539) Human Tagged ORF Clone

Product data:

Product Type:	Expression Plasmids
Product Name:	DLK2 (NM_206539) Human Tagged ORF Clone
Tag:	TurboGFP
Symbol:	DLK2
Synonyms:	DLK-2; EGFL9
Mammalian Cell Selection:	Neomycin
Vector:	pCMV6-AC-GFP (PS100010)
E. coli Selection:	Ampicillin (100 ug/mL)
ORF Nucleotide Sequence:	>RG216829 representing NM_206539 Red=Cloning site Blue=ORF Green=Tags(s)

TTTTGTAATACGACTCACTATAGGGCGGCCGGAATTCGTCGACTGGATCCGGTACCGAGGAGATCTGCC
GCC**CGATCGCC**

ATGCCAGCGGCTGCCGCTGCCTGCATCTCGTGTGCCTGTTGTGCATTCTGGGGCTCCCGGTCAGCCTG
TCCGAGCCGATGACTGCAGCTCCACTGTGACCTGGCCACGGCTGCTGTGCACCTGACGGCTCCTGCAG
GTGTGACCCGGGCTGGGAGGGGCTGCACCTGTGAGCGTGTGTGAGGATGCCTGGTGCCAGCACGGTACC
TGCCACCAGCCATGGCAGTGCATCTGCCACAGTGGCTGGCAGGCAAGTTCTGTGACAAAGATGAACATA
TCTGTACCACGCAGTCCCCTGCCAGAATGGAGGCCAGTGCATGTATGACGGGGCGGTGAGTACCATTG
TGTGTGCTTACCAGGCTTCCATGGGCGTACTGCGAGCGCAAGGCTGGACCCTGTGAACAGGCAGGCTCC
CCATGCCGCAATGGCGGGCAGTGCAGGACGACAGGGCTTTGCTCTCAACTCAGTGCCGCTGCTTGG
TGGGCTTTGTGGGTGCCGCTGTGAGGTAATGTGGATGACTGCCTGATGCGGCCTTGTGCTAACGGTGC
CACCTGCCTTGACGGCATAAACCCTTCTCCTGCCTGTCTGAGGGCTTTGCTGGACGCTTCTGCACC
ATCAACCTGGATGACTGTGCCAGCCGCCATGCCAGAGAGGGGCCGCTGTGGGACCGTGTCCAGGACT
TCGACTGCCTCTGCCCCAGTGGCTATGGTGGCAAGACCTGTGAGCTTGTCTTACCTGTCCAGACCCCC
AACCACAGTGGACACCCCTTAGGGCCACCTCAGCTGTAGTGGTACCTGCCACGGGGCCAGCCCCCAC
AGCGCAGGGGCTGGTCTGCTGCGGATCTCAGTGAAGGAGTGGTGGGAGGCAAGAGGCTGGGCTAGGTG
AGCCTAGCTTGGTGGCCCTGGTGGTGTGGGGCCCTCACTGCTGCCCTGGTTCTGGCTACTGTGTTGCT
GACCCGTAGGGCCTGGCCCGGGGTGTCTGCCCCCTGGACCCTGTTGCTACCCTGCCCCACACTATGCT
CCAGCGTGCCAGGACAGGAGTGTGAGTTAGCATGCTGCCAGCAGGGCTCCCCCTGCCACGTGACTTGC
CCCCTGAGCCTGGAAAGACCACAGCACTG

AGCGGACCGACGCGTACGCGGCCGCTCGAG - GFP Tag - GTTTAA



[View online »](#)

Protein Sequence: >RG216829 representing NM_206539
 Red=Cloning site Green=Tags(s)

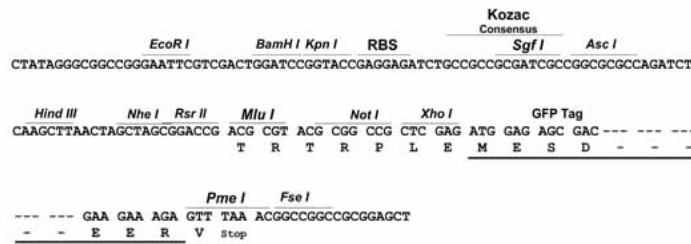
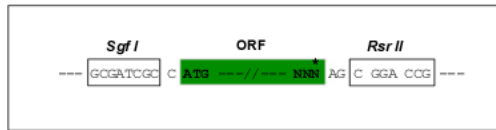
MPSGCRCLHLVCLLCILGAPQPVRADDCSSHCDLAHGCCAPDGSCRCDPGWEGLHCERCVRMPGCQHGT
 CHQPWQCICHSGWAGKFCDKDEHICTTQSPCQNGGQCMYDGGGEYHCVCLPGFHRDCERKAGPCEQAGS
 PCRNGGQCQDDQGFALNFTCRCLVGFVGARCEVNVDDCLMRPCANGATCLDGINRFSCLCEGFAGRFCT
 INLDDCASRPCQRGARCRDRVHDFDCLCPSGYGKTCELVLPVDPPTTVDTPLGPTS AVVVVPATGPAPH
 SAGAGLLRI SVKEVVRREQEAGLGEPSLVALVVFALTAALVLATVLLTLRAWRRGVCPGPGCCYPAPHYA
 PACQDQECQVSMPLPAGLPLPRDLPPPEPGKTTAL

SGPTRTRRLE - GFP Tag - V

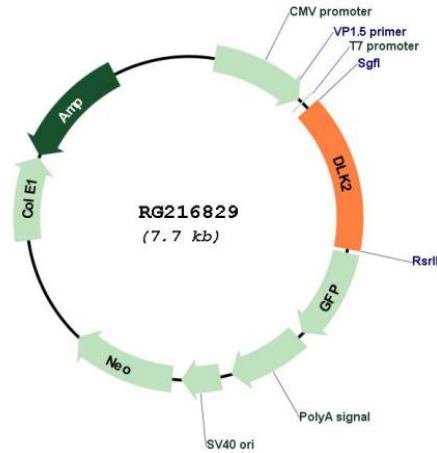
Restriction Sites: SgfI-RsrII

Cloning Scheme:

Cloning sites used for ORF Shuttling:



Plasmid Map:



ACCN: NM_206539

ORF Size:	1149 bp
OTI Disclaimer:	The molecular sequence of this clone aligns with the gene accession number as a point of reference only. However, individual transcript sequences of the same gene can differ through naturally occurring variations (e.g. polymorphisms), each with its own valid existence. This clone is substantially in agreement with the reference, but a complete review of all prevailing variants is recommended prior to use. More info
OTI Annotation:	This clone was engineered to express the complete ORF with an expression tag. Expression varies depending on the nature of the gene.
Components:	The ORF clone is ion-exchange column purified and shipped in a 2D barcoded Matrix tube containing 10ug of transfection-ready, dried plasmid DNA (reconstitute with 100 ul of water).
Reconstitution Method:	<ol style="list-style-type: none">1. Centrifuge at 5,000xg for 5min.2. Carefully open the tube and add 100ul of sterile water to dissolve the DNA.3. Close the tube and incubate for 10 minutes at room temperature.4. Briefly vortex the tube and then do a quick spin (less than 5000xg) to concentrate the liquid at the bottom.5. Store the suspended plasmid at -20°C. The DNA is stable for at least one year from date of shipping when stored at -20°C.
RefSeq:	NM_206539.2 , NP_996262.1
RefSeq Size:	1470 bp
RefSeq ORF:	1152 bp
Locus ID:	65989
UniProt ID:	Q6UY11
Cytogenetics:	6p21.1
Protein Families:	Druggable Genome, Transmembrane
Gene Summary:	Regulates adipogenesis.[UniProtKB/Swiss-Prot Function]