

## Product datasheet for **RG216827**

### Neuroglycan C (CSPG5) (NM\_006574) Human Tagged ORF Clone

#### Product data:

Product Type:	Expression Plasmids
Product Name:	Neuroglycan C (CSPG5) (NM_006574) Human Tagged ORF Clone
Tag:	TurboGFP
Symbol:	Neuroglycan C
Synonyms:	NGC
Mammalian Cell Selection:	Neomycin
Vector:	pCMV6-AC-GFP (PS100010)
E. coli Selection:	Ampicillin (100 ug/mL)



[View online »](#)

**ORF Nucleotide Sequence:**

>RG216827 representing NM\_006574  
 Red=Cloning site Blue=ORF Green=Tags(s)

TTTTGTAATACGACTCACTATAGGGCGGCCGGGAATTCGTCGACTGGATCCGGTACCGAGGAGATCTGCC  
 GCC**CGGATCGCC**

ATGGGGCAGCCGGGGCGGGGCCCGGGCCGGGGCCCGCCGACTGCTGCTGTTTCTGGGGCCGCGC  
 TGGTCCTGGCCTCTGGGGCCGTGCCGGCGGTGAGGCGGGCAGCGCGTTGAGGCCGAAGAGCTGGTGAA  
 GGGCAGCCCGCGGTGGGAGCCGCTGCCAACGACACGCGGGAAGAAGCCGGCCACCAGCGGCTGGGAA  
 GATGAGGCGTCGTGGACGGCGCCCGGTGGCGAGCTGGCCGGGCCAGAAGAGGTGCTGCAGGAGTCGGCTG  
 CGGTGACCGGCACCGCTGGCTGGAAGCTGACAGCCAGGCTGGGAGGAGTGACCGCAGAGGGCGGCAG  
 CGGCGATGCCAGGCCCTCCAGCTACGCTCCAGGCTCCACAGAGTCTCGGGCAGTCAATCATGCCC  
 CCTGCCATTCTGAGGCTACAGAGGCCAGCGGGCCACCCTCCCCACCCCGGCGACAAGCTGAGCCAG  
 CTTCTGAACTCCCAAGGAGAGCCCTTGGAGTTTGGCTGAACCTGGGGGCAGCACACCCGACCCTCA  
 AGTGCCAGAGCTGACTTACCCATTTAGGGCACCTGGAGCCCCAACCGCATCAGATATCATTGACATC  
 GACTACTTCGAAGGACTGGATGGTGAGGGTCGTGGCGCAGATCTGGGGAGCTTCCAGGGTACCCAGGAA  
 CCTCAGAGAACCACCCTGATACTGAGGGAGAGACCCCTTCTGGAGCCTGCTTACTTATACGATGATT  
 CACCCCTTCGATGAATCTGATTCTACCCACCACATCCTTTTATGATGACTTGGATGAAGAGGAGGAG  
 GAAGAGGAGGATGACAAAGATGCAGTAGGAGGTGGAGACCTAGAAGATGAAAATGAGCTTCTAGTCCCA  
 CTGGGAAGCCTGGTCTGGGGCCCGGGACAGGCCAGCCACCAGTCGGTGGCATGCTGTCCCTCCACAGCA  
 CACTCTGGGTCGGTCCCAGCAGCAGCATCGCCCTCAGGCCCGCCAGGAGAGCCAGGCAGGGACTTG  
 GCCTCCAGTGAAGTGGCACTGAGTCCCGCAGTGGCTTGTGCGGCATAACGGCTCCTGCCGTCAGTGT  
 GCGACCTTCCCAAGTTACTGTCACAATGGCGGCCAGTGTACTGGTGGAGAACATAGGGGCTTCTG  
 CAGGTGCAACACGACGAGACTACATCTGGACAAGGGGATGCGCTGCGAGTCCATCATCACCGACTTCCAG  
 GTGATGTGCGTGGCCGTGGGCTCGGCTGCCCTCGTCTGCTCCTGCTTTCATGATGACGGTGTCTTTG  
 CCAAGAAGCTCTACTGCTCAAGACGGAGAATACCAAGCTGCGTAGGACCAACAAATCCGGACCCCATC  
 TGAGCTCCACAATGATAACTTCTCCCTCTCCACATTGCCGAGGGCTCTCACCAATGATGATCTAGT  
 GCTCCCCACAAAATCCAGGAGTTCTCAAGTCTGCTGAAAGAGGAGGAGTCATTTAACATCCAGAAT  
 CCATGTCGCCAAACTTGAGGTGGCAAAGGTGACCAGGCTGACTGGATGTGAAGTGTCTTCAGAATAA  
 TTTAACC

**ACGCGTACGCGGCCGCTCGAG** - GFP Tag - GTTTAA

**Protein Sequence:**

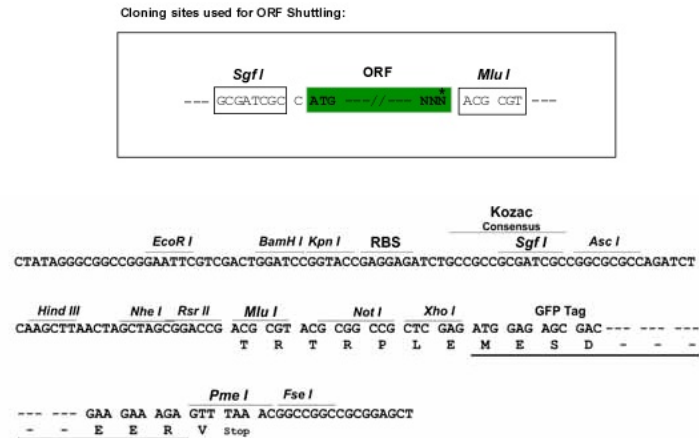
>RG216827 representing NM\_006574  
 Red=Cloning site Green=Tags(s)

MGRAGGGGPRGPPPLLLFLGAALVLASGAVPAREAGSAVEAEELVKGSPAWEPPANDTREEAGPPAAGE  
 DEASWTAPGGELAGPEEVLQESA AVTGTAWLEADSPGLGGVTAEAGSGDAQALPATLQAPHEVLGQSIMP  
 PAIPEATEASGPPSPTPGDKLSPASELPKESPLEVWNLGGSTDPQVPELTYPFQGTLEPQPASDIIDI  
 DYFEGLDGEGRGADLGSFPGSPGTSENHPDTEGETPSWSLLDLYDDFTPFDESDFYPTTSFYDDLDEEEE  
 EEEDDKDAVGGGDLEDENELLVPTGKPLGPGTGQPTSRWHAVPPQHTLGSVPGSSIALRPRGEPGRDL  
 ASSENGTECRSGFVRHNGSCRSDLFPSYCHNGGQCYLVENIGAFRCRCNTQDYIWHKGMRCESIIITDFQ  
 VMCVAVGSAALVLLLLFMMTVFFAKKLYLLKTENTKLRRTNKFRTPSELHNDNFSLSSTIAEGSHPNDDPS  
 APHKIQEVLKSKLKEEESFNIQNSMSPKLEGGKGDQADLDVNCLQNNLT

**TRTRPLE** - GFP Tag - V

**Restriction Sites:**

Sgfl-MluI

**Cloning Scheme:**


**ACCN:** NM\_006574

**ORF Size:** 1617 bp

**OTI Disclaimer:** The molecular sequence of this clone aligns with the gene accession number as a point of reference only. However, individual transcript sequences of the same gene can differ through naturally occurring variations (e.g. polymorphisms), each with its own valid existence. This clone is substantially in agreement with the reference, but a complete review of all prevailing variants is recommended prior to use. [More info](#)

**OTI Annotation:** This clone was engineered to express the complete ORF with an expression tag. Expression varies depending on the nature of the gene.

**Components:** The ORF clone is ion-exchange column purified and shipped in a 2D barcoded Matrix tube containing 10ug of transfection-ready, dried plasmid DNA (reconstitute with 100 ul of water).

**Reconstitution Method:**

1. Centrifuge at 5,000xg for 5min.
2. Carefully open the tube and add 100ul of sterile water to dissolve the DNA.
3. Close the tube and incubate for 10 minutes at room temperature.
4. Briefly vortex the tube and then do a quick spin (less than 5000xg) to concentrate the liquid at the bottom.
5. Store the suspended plasmid at -20°C. The DNA is stable for at least one year from date of shipping when stored at -20°C.

**RefSeq:** [NM\\_006574.2](#), [NP\\_006565.1](#)

**RefSeq Size:** 2005 bp

**RefSeq ORF:** 1620 bp

**Locus ID:** 10675

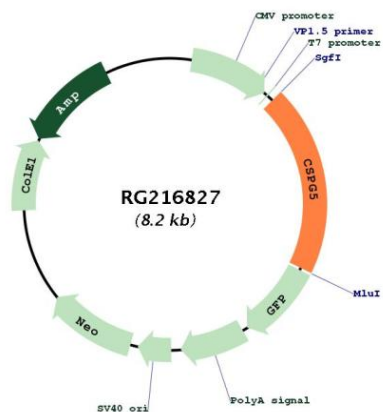
**UniProt ID:** [O95196](#)

**Cytogenetics:** 3p21.31

**Protein Families:** ES Cell Differentiation/IPS, Transmembrane

**Gene Summary:** The protein encoded by this gene is a proteoglycan that may function as a neural growth and differentiation factor. Several transcript variants encoding different isoforms have been found for this gene. [provided by RefSeq, May 2011]

**Product images:**



Circular map for RG216827