

## Product datasheet for **RG216797**

### TRPT1 (NM\_001033678) Human Tagged ORF Clone

#### Product data:

**Product Type:** Expression Plasmids  
**Product Name:** TRPT1 (NM\_001033678) Human Tagged ORF Clone  
**Tag:** TurboGFP  
**Symbol:** TRPT1  
**Mammalian Cell Selection:** Neomycin  
**Vector:** pCMV6-AC-GFP (PS100010)  
**E. coli Selection:** Ampicillin (100 ug/mL)  
**ORF Nucleotide Sequence:** >RG216797 representing NM\_001033678  
Red=Cloning site Blue=ORF Green=Tags(s)

TTTTGTAATACGACTCACTATAGGGCGGCCGGGAATTCGTCGACTGGATCCGGTACCGAGGAGATCTGCC  
GCCGCGATCGCC

ATGAACTTCTCTGGAGGAGGGAGGCAGGAAGCAGCAGGGTCCAGGGGTAGAAGGGCTCCCAGACCCCGAG  
AACAGGACCGAGACGTGCAGCTGTCCAAGGCTCTGTCTATGCCCTGCGCCATGGGGCCTTGAAGCTGGG  
GCTTCCCATGGGAGCTGATGGCTTCGTGCCCTGGGCACCCTCCTGCAGTTGCCCCAGTTCGCGGGCTTC  
TCTGCTGAAGATGTGCAGCGCGTGGTGGACACCAATAGGAAGCAGCGGTCGCCCTGCAGCTGGGGGATC  
CCAGCACTGGCCTTCTCATCCGGGCCAACCCAGGGCCATTCCCTGCAGGTACCTAAGTTGGAGCTGATGCC  
CCTGGAGACACCGCAGGCCCTGCCCCGATGCTAGTCCATGGTACATTCTGGAAGCACTGGCCATCCATC  
CTACTCAAAGGCCTGTCCTGCCAGGGAAGGACGCACATTCACCTGGCCCCAGGACTGCCTGGAGACCCCG  
GTATCATCAGTGGCATGCGGTCCCATTGTGAAATAGCTGTGTTTCATCGATGGACCCTGGCTCTGGCAGA  
TGGAAATACCCTTCTCCGCTCTGCCAATGGGGTGATTCTGACTCCAGGGAATACTGATGGCTTCTCCTT  
CCCAAGTACTTCAAGGAGGCCCTGCAGCTACGCCCTACCCGAAAGCCCTTCTTGCTGGTGTGATGAAG  
AGACAGAGTGTGAGTAGCCCCAAGCACAGCTCCAGAGAAAGGAGGAGGATCCAACA

ACGCGTACGCGGCCGCTCGAG - GFP Tag - GTTTAA

**Protein Sequence:** >RG216797 representing NM\_001033678  
Red=Cloning site Green=Tags(s)

MNFSGGGRQEAAGSRGRRAPRPREQDRDVQLSKALSYALRHGALKLGLPMGADGFVPLGTLQLPQFRGF  
 SAEDVQRVVDNTRKQRFALQLGDPSTGLLIRANQGHSLQVPKLELMPLTPQALPPMLVHGTFWKHWPSI  
 LLKGLSCQGRTHIHLAPGLPGDPGIIISGMRSHCEIAVFIDGPLALADGIPFFRSANGVILTPGNTDGFLL  
 PKYFKEALQLRPTRKPLSLAGDEETECQSSPKHSSRERRRIQQ

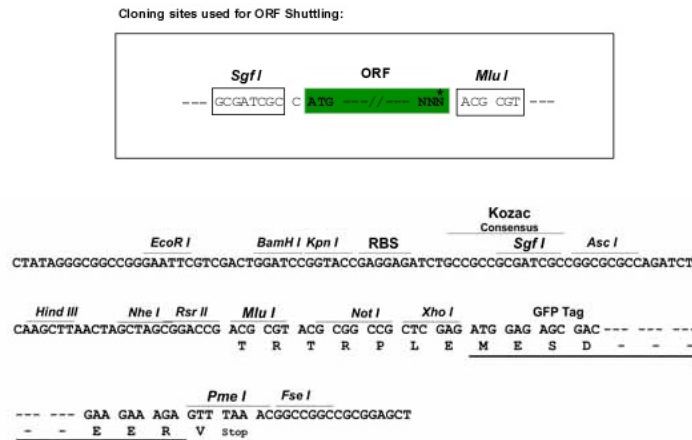
TRTRPLE - GFP Tag - V



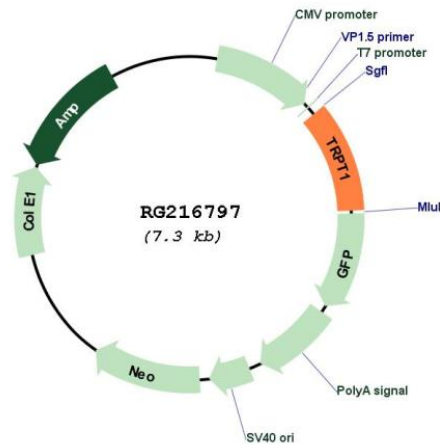
[View online »](#)

Restriction Sites: SgfI-MluI

Cloning Scheme:



Plasmid Map:



ACCN: NM\_001033678

ORF Size: 759 bp

OTI Disclaimer: The molecular sequence of this clone aligns with the gene accession number as a point of reference only. However, individual transcript sequences of the same gene can differ through naturally occurring variations (e.g. polymorphisms), each with its own valid existence. This clone is substantially in agreement with the reference, but a complete review of all prevailing variants is recommended prior to use. [More info](#)

OTI Annotation: This clone was engineered to express the complete ORF with an expression tag. Expression varies depending on the nature of the gene.

<b>Components:</b>	The ORF clone is ion-exchange column purified and shipped in a 2D barcoded Matrix tube containing 10ug of transfection-ready, dried plasmid DNA (reconstitute with 100 ul of water).
<b>Reconstitution Method:</b>	<ol style="list-style-type: none"><li>1. Centrifuge at 5,000xg for 5min.</li><li>2. Carefully open the tube and add 100ul of sterile water to dissolve the DNA.</li><li>3. Close the tube and incubate for 10 minutes at room temperature.</li><li>4. Briefly vortex the tube and then do a quick spin (less than 5000xg) to concentrate the liquid at the bottom.</li><li>5. Store the suspended plasmid at -20°C. The DNA is stable for at least one year from date of shipping when stored at -20°C.</li></ol>
<b>RefSeq:</b>	<u><a href="#">NM_001033678.4</a></u>
<b>RefSeq Size:</b>	1071 bp
<b>RefSeq ORF:</b>	762 bp
<b>Locus ID:</b>	83707
<b>UniProt ID:</b>	<u><a href="#">Q86TN4</a></u>
<b>Cytogenetics:</b>	11q13.1
<b>Gene Summary:</b>	Catalyzes the last step of tRNA splicing, the transfer of the splice junction 2'-phosphate from ligated tRNA to NAD to produce ADP-ribose 1''-2'' cyclic phosphate.[UniProtKB/Swiss-Prot Function]