

Product datasheet for **RG216786**

TTC23 (NM_001040660) Human Tagged ORF Clone

Product data:

Product Type:	Expression Plasmids
Product Name:	TTC23 (NM_001040660) Human Tagged ORF Clone
Tag:	TurboGFP
Symbol:	TTC23
Synonyms:	HCC-8
Mammalian Cell Selection:	Neomycin
Vector:	pCMV6-AC-GFP (PS100010)
E. coli Selection:	Ampicillin (100 ug/mL)



[View online »](#)

ORF Nucleotide Sequence:

>RG216786 representing NM_001040660
 Red=Cloning site Blue=ORF Green=Tags(s)

TTTTGTAATACGACTCACTATAGGGCGGCCGGAATTCGTCGACTGGATCCGGTACCGAGGAGATCTGCC
 GCC**CGGATCGCC**

ATGCAAGAAATCACAGAAACCCACATATCCAACCACCTAGATGAAGTTGTTGCTGCTGTTAGCATCACTC
 ATAGAAAAGAAGTTCCAAAACAAGCTGCTTCAGACAGCACTATTCCAGCCTCCTCGAGAGAAACTCCACCT
 CTGTGAAGAGAAAAGCAAAGTCTATTCCAACAGTCATGAGTACAAAACAGGCCGTCATGAGCTTGTGCGT
 TGCGTAGCACTGACAAGAATTTGCTATGGAGACTCACATTGAAACTAGCAGAGGCACATGTTAATCTGG
 CTCAAGGCTACCTCCAGCTGAAAGGACTGCTACTGCAAGCAAAAACAACATGCAGAAAAAGCCAGACAAAT
 CCTCGCCAACTCCATTGTGCCTCCCTATAGTGAGAATACAGATGTTTTCAAGTTTTCCATTGAGCTTTTC
 CATACCATGGGCAGAGCTTTACTCTCCCTTCAAAAATTTAAGGAAGCTGCAGAGAATTTGACAAAAGCAG
 AGAGACTTCAAAGGAGCTGCTACAATGTGGAAGAATTATAAAGGAAGAATGGATAGAAAATTGAAGCAGC
 GATCAGATTATCATTGTCACAGGTGATCAAGGTCAGAAGAAGTCAAAGAAGCTTTGTCCCACTATCAA
 GCAGCTTTGGAATATGTTGAGATCAGTAAAGGTGAAACAAGTCGTGAGTGTGTACCCATATTGAGAGAAT
 TAGCAGGTGTAGAGCAAGCCCTGGGACTCCACGATGTATCCATCAACCACCTTCTCCAGGCACATCTTAT
 CATCCTGAGTAGAAGCCCTCTCAAGTGGAGGCAGCAGACTCGGCACACATCGTCGCCCATGCTGCTGTC
 GCTTCAGGGAGACACGAGCACCATGATGTAGCTGAGCAGTATTTTCAAGAGAGCATGGCTCATCTTAAGG
 ATCTGAAGGGATGGGAAGAACCAATTTCTTTCAATTCAAGTGAATTTTGCCATTTTCTACAAATGAC
 TGGAAAAAGAGAGACAACCTCGATCCTGAGAGAGTCCCTGGAAGCCAAAGTGAAGCATTGGCGAT
 TTCAGTCCCGAGGTGGCAGAGACATACCGGCTCCTGGGAGGAGCAGACCTGGCGCAGGGGAACCACAGTG
 GGGCCCGCAAGAACTGAAGAAGTGTCTCCAGATCCAGACCCCTTATATGGACCGCAGGACAAAAGGAC
 TCTGGCCACCCAGCAGGCCATGGGCATGCTGTCCACGGCCCCAAGGTTGCTTGAAGCCAAAGGCAGGCA
 TCAAAAAGCCAAAGTGGCCTTCTGCACCAGCATCCCTCAGGACACCCTGCTGGGAAGGCCCGCCCGGCA
 CAACAGCAGAC

ACGCGTACGCGGCCGCTCGAG – GFP Tag – GTTTAA

Protein Sequence:

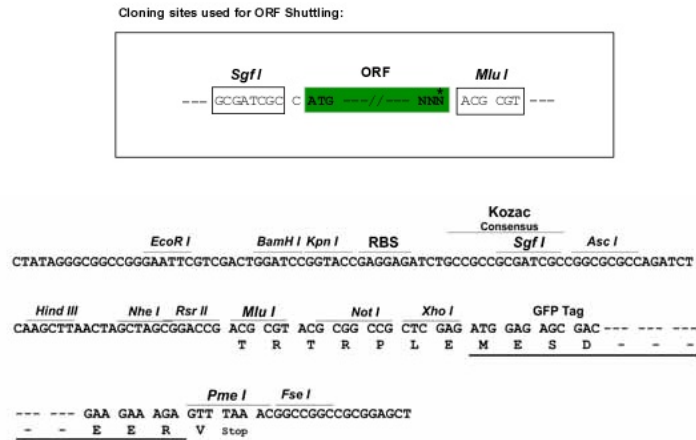
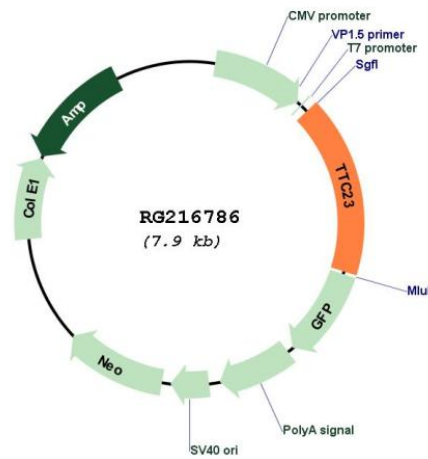
>RG216786 representing NM_001040660
 Red=Cloning site Green=Tags(s)

MQESQETHISNHLDEVVAAVSITHRKKFQNKLLQTALFQPPREKLHLCEEKAKSYSNSHEYKQAVHELVR
 CVALTRICYGDShwKLAEAHVNLAQGYLQLKGLSLQAKQHAEKARQILANSIVPPYSENTDVFKFSIELF
 HTMGRALLSLQKFKEAENLTKAERLSKELLQCGRIIKEEWIEIEARIRLSFAQVYQGQKSKEALSHYQ
 AALEYVEISKGETSRECVPIRELAGVEQALGLHDVSIHFLQAHLIILSRSPSQVEAADS AHIVAAAV
 ASGRHEHHDVAEQYFQESMAHLKDSEGMRGRTKFLSIQDEFCHFLQMTGQKERATSILRESLEAKVEAFGD
 FSPEVAETRYRLGGADLAQGNHSGARKLKKLQIQTLTYGPQDKRTLATQQAMGMLSTAPKVASKPRQA
 SKAKVAFCTSIPODILLGKARPGTTAD

TRTRPLE – GFP Tag – V

Restriction Sites:

SgfI-MluI

Cloning Scheme:

Plasmid Map:


ACCN: NM_001040660

ORF Size: 1341 bp

OTI Disclaimer: The molecular sequence of this clone aligns with the gene accession number as a point of reference only. However, individual transcript sequences of the same gene can differ through naturally occurring variations (e.g. polymorphisms), each with its own valid existence. This clone is substantially in agreement with the reference, but a complete review of all prevailing variants is recommended prior to use. [More info](#)

OTI Annotation: This clone was engineered to express the complete ORF with an expression tag. Expression varies depending on the nature of the gene.

Components:	The ORF clone is ion-exchange column purified and shipped in a 2D barcoded Matrix tube containing 10ug of transfection-ready, dried plasmid DNA (reconstitute with 100 ul of water).
Reconstitution Method:	<ol style="list-style-type: none">1. Centrifuge at 5,000xg for 5min.2. Carefully open the tube and add 100ul of sterile water to dissolve the DNA.3. Close the tube and incubate for 10 minutes at room temperature.4. Briefly vortex the tube and then do a quick spin (less than 5000xg) to concentrate the liquid at the bottom.5. Store the suspended plasmid at -20°C. The DNA is stable for at least one year from date of shipping when stored at -20°C.
RefSeq:	<u>NM_001040660.1, NP_001035750.1</u>
RefSeq Size:	3686 bp
RefSeq ORF:	1343 bp
Locus ID:	64927
Cytogenetics:	15q26.3
Gene Summary:	Participates positively in the ciliary Hedgehog (Hh) signaling.[UniProtKB/Swiss-Prot Function]