

Product datasheet for **RG216776**

SLC23A2 (NM_005116) Human Tagged ORF Clone

Product data:

Product Type:	Expression Plasmids
Product Name:	SLC23A2 (NM_005116) Human Tagged ORF Clone
Tag:	TurboGFP
Symbol:	SLC23A2
Synonyms:	NBTL1; SLC23A1; SVCT2; YSPL2
Mammalian Cell Selection:	Neomycin
Vector:	pCMV6-AC-GFP (PS100010)
E. coli Selection:	Ampicillin (100 ug/mL)



[View online »](#)

ORF Nucleotide
Sequence:

>RG216776 representing NM_005116.

Blue=ORF Red=Cloning site Green=Tag(s)

```
GCTCGTTTAGTGAACCGTCAGAATTTTGTAAACGACTCACTATAGGGCGGCCGGGAATTCGTGACTG
GATCCGGTACCGAGGAGATCTGCCGCCACGATCGCC
ATGATGGGTATTGGTAAGAATACCACATCCAAATCAATGGAGGCTGGAAGTTCAACAGAAGGCAAATAC
GAAGACGAGGCAAAGCACCCAGCTTTCTCACTTTCCGGTGGTGATAAATGGAGGCGCCACCTCCAGC
GGTGAGCAGGACAATGAGGACACTGAGCTCATGGCGATCTACACTACGGAAAACGGCATTGCAGAAAAG
AGCTCTCTCGCTGAGACCCTGGATAGCACTGGCAGTCTGGACCCCGCGATCAGACATGATTTATACC
ATAGAAGATGTTCCCTCCCTGGTACCTGTGTATATTTCTGGGGCTACAGCACTACCTGACATGCTTCAGC
GGCAGCATCGCAGTGCCCTTCTGTGGCTGATGCCATGTGTGTGGGTACGACCAGTGGGCCACCAGC
CAGCTCATTGGGACCATTTTCTGTGTGGGAATCACTACTTTGCTACAGACAACGTTTGGATGCAGG
TTACCCCTGTTTCAGGCCAGTGTTCATTTTGGCCCTGCTCGAGCCATCTGTCTTTAGATAAA
TGGAAATGTAACACCACAGATGTTTCAGTTGCCAATGGAACAGCAGAGCTGTTGCACACAGAACACATC
TGGTATCCCGGATCCGAGAGATCCAGGGGCCATCATCATGTCTCACTGATAGAAGTAGTCATCGGC
CTCTCGCCTGCTGGGCTCTACTGAAGTACATCGGTCCCTTGACCATTACACCCACGGTGGCCCTA
ATTGGCCTCTCTGGTTCCAGGCAGCGGGGAGAGAGCCGGGAAGCACTGGGGCATTGCCATGCTGACA
ATATTCCTAGTATTACTGTTTTCTCAATACGCCAGAAATGTTAAATTTCTCTCCCGATTATAAATCC
AAGAAAGGATGGACTGCGTACAAGTTACAGCTGTTCAAAATGTTCCCTATCATCTGGCCATCTGGTA
TCCTGGCTGCTCTGCTTCATCTTACGGTGACAGATGCTTCCCTCCCGACAGCACAAGTATGGCTTC
TATGCTCGCACAGATGCCAGGCAAGCGTGCTTCTGGTAGCCCGTGGTTAAGGTTCCATACCCATTT
CAGTGGGGACTGCCACCGTGTCTGCGGCCGGTGTATCGGCATGCTCAGTGCCGTGGTCGCCAGCATC
ATCGAGTCTATTGGTGACTACTACGCTGTGCACGGCTGCTGTGCCCCACCCCCCATCCACGCA
ATAAACAGGGGAATTTTCTGTTGGAAGCCCTCCTGTGTTCTTGATGGCATATTTGGTACTGGGAATGGC
TCTACTTCATCCAGTCCCAACATTGGAGTTTTGGGAATTACAAAGGTCGGCAGCCGCCGCTGATACAG
TGCGGAGCAGCCCTCATGCTCGCTCTGGGCATGATCGGGAAGTTCAGCGCCCTCTTTGCGTCCCTCCG
GATCCTGTGCTGGGAGCCCTGTTCTGCACGCTCTTTGGAATGATCAGAGCTGTTGGCCTCTTAACCTG
CAGTTCATTGATTTAAATTTCTCCCGAACCTCTTTGTGCTTGGATTTTCGATCTCTTTGGGCTCGTC
CTTCAAGTTACCTCAGACAGAACCCTCTGGTCACAGGGATAACAGGAATCGATCAAGTGTGAACGTC
CTTCTCACAACCTGCTATGTTGTAGGGGCTGTGTGGCTTTATCCTGGATAACACCATCCAGGCACT
CCAGAGGAAAGAGGAATCCGGAATGGAAGAAGGGTGTGGCAAAGGGAACAAATCACTCGACGGCATG
GAGTCGTACAATTTGCCATTTGGCATGAACATTATAAAAAATACAGATGCTTCAGCTACTTACCCATC
AGCCCAACCTTTGTGGGCTACACATGGAAGGCCCTCAGGAAGAGCGACAACAGCCGGAGTTCAGATGAA
GACTCCAGGCCACGGGA
ACGCGTACGCGGCCGCTCGAG - GFP Tag - GTTAAAC
```

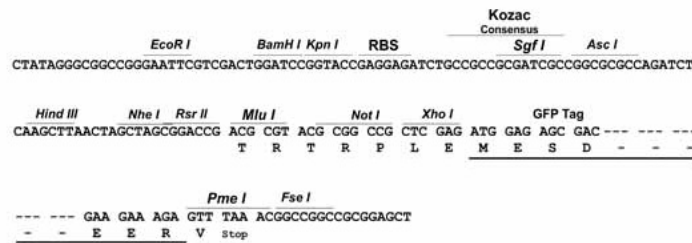
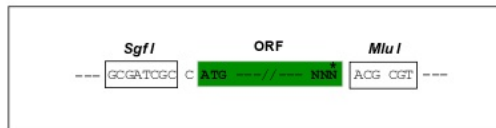
Protein Sequence: >Peptide sequence encoded by RG216776
 Blue=ORF Red=Cloning site Green=Tag(s)

MMGIGKNTTSKSMEAGSSTEGKYEDEAKHPAFFTLPVVINGGATSSGEQDNEDTELMAIYTTENGIAEK
 SSLAETLDSTGSLDPQRSMDIYTIEDVPPWYLCIFLGLQHYLTCFSGTIAVPFLADAMCVGYDQWATS
 QLIGTIFFCVGIITLLQTTFGCRLPLFQASAFAPARAILSLDKWKCNTTDDVSVANGTAELLHTEHI
 WYPRIREIQGAIIMSSLIEVVIIGLLGLPGALLKYIGPLTITPTVALIGLSGFQAAGERAGKHWGIAMLT
 IFLLVLLFSQYARNVKFPLPIYKSKKGWTAYKLQLFKMFPIILAILVSWLLCFIFTVTDVFPDSTKYGF
 YARTDARQVLLVAPWFKVPYFPQWGLPTVSAAGVIGMLSAVVASIIESIGDYACARLSCAPPPPIHA
 INRGIFVEGLSCVLDGIFGTGNGSTSSSPNIGVLGITKVGSRRIQCGAALMLALGMIGKFSALFASLP
 DPVLAGLFCFLGMITAVGLSNLQFIDLNSSRNLFVLGFSIFFGLVLPSTYLRQNPLVTGITGIDQVLNV
 LLTTAMFVGGCVAFILDNTIPGTPEERGIRKWKKGKGNKSLDGMESYNLPGMNIKKYRCFSYLP
 SPTFVGYTWKGLRKSDNSRSDSDSQATG
 TRTRPLEMESDEGLPAMEIECRITGTLNGVEFELVGGEGTPEQGRMTNKMKSTKGALTFSPYLLSHV
 MGYGFYHFGTYPSTYENPFLHAINNGGYNTRIEKYEDGGVLHVSFSYRYEAGRVIGDFKVMGTGFPED
 SVIFTDKIIRSNTAVEHLHPMGDNDLDGSFTRTFLRDGGYSSVVDSHMHFKSAIHPSILQNGGPMFA
 FRRVEEDHSNTELGIVEYQHAFKTPDADAGEERV

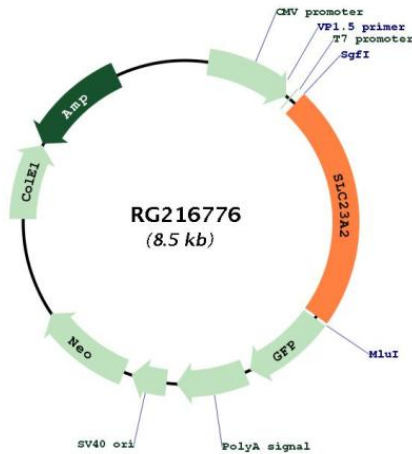
Restriction Sites: SgfI-MluI

Cloning Scheme:

Cloning sites used for ORF Shuttling:



Plasmid Map:



ACCN: NM_005116

ORF Size: 1950 bp

OTI Disclaimer: Due to the inherent nature of this plasmid, standard methods to replicate additional amounts of DNA in E. coli are highly likely to result in mutations and/or rearrangements. Therefore, OriGene does not guarantee the capability to replicate this plasmid DNA. Additional amounts of DNA can be purchased from OriGene with batch-specific, full-sequence verification at a reduced cost. Please contact our customer care team at custsupport@origene.com or by calling 301.340.3188 option 3 for pricing and delivery.

The molecular sequence of this clone aligns with the gene accession number as a point of reference only. However, individual transcript sequences of the same gene can differ through naturally occurring variations (e.g. polymorphisms), each with its own valid existence. This clone is substantially in agreement with the reference, but a complete review of all prevailing variants is recommended prior to use. [More info](#)

OTI Annotation: This clone was engineered to express the complete ORF with an expression tag. Expression varies depending on the nature of the gene.

Components: The ORF clone is ion-exchange column purified and shipped in a 2D barcoded Matrix tube containing 10ug of transfection-ready, dried plasmid DNA (reconstitute with 100 ul of water).

Reconstitution Method:

1. Centrifuge at 5,000xg for 5min.
2. Carefully open the tube and add 100ul of sterile water to dissolve the DNA.
3. Close the tube and incubate for 10 minutes at room temperature.
4. Briefly vortex the tube and then do a quick spin (less than 5000xg) to concentrate the liquid at the bottom.
5. Store the suspended plasmid at -20°C. The DNA is stable for at least one year from date of shipping when stored at -20°C.

RefSeq: [NM_005116.4](#)

RefSeq Size: 6953 bp

RefSeq ORF: 1953 bp

Locus ID: 9962

UniProt ID: [Q9UGH3](#)

Cytogenetics: 20p13

Domains: xan_ur_permease

Protein Families: Transmembrane

MW: 70.3 kDa

Gene Summary: The absorption of vitamin C into the body and its distribution to organs requires two sodium-dependent vitamin C transporters. This gene encodes one of the two required transporters and the encoded protein accounts for tissue-specific uptake of vitamin C. Previously, this gene had an official symbol of SLC23A1. [provided by RefSeq, Jul 2008]