

Product datasheet for **RG216755**

CHD3 (NM_001005273) Human Tagged ORF Clone

Product data:

Product Type:	Expression Plasmids
Product Name:	CHD3 (NM_001005273) Human Tagged ORF Clone
Tag:	TurboGFP
Symbol:	CHD3
Synonyms:	Mi-2a; Mi2-ALPHA; SNIBCPS; ZFH
Mammalian Cell Selection:	Neomycin
Vector:	pCMV6-AC-GFP (PS100010)
E. coli Selection:	Ampicillin (100 ug/mL)
ORF Nucleotide Sequence:	>RG216755 representing NM_001005273 Red=Cloning site Blue=ORF Green=Tags(s)

TTTTGTAATACGACTCACTATAGGGCGGCCGGAATTCGTCGACTGGATCCGGTACCGAGGAGATCTGCC
GCC**CGATCGCC**

ATGAAGGCGGCAGACACTGTGATCCTGTGGGCAAGAAGTAAAAATGACCAGCTGAGGATTTCTTTCTC
CAGGACTGTGTTGGGGTGACAGGATGCCTGATAAGGATGACATTCGGCTGCTGCCGTGAGCATTGGGTG
GAAGAAGAGAAAACGAGGACCCAAGAAGCAGAAGGAGAACAAGCCAGGAAAACCCGAAAACGCAAGAAG
CGTGACAGTGAGGAGGAATTTGGTCTGAGCGAGATGAGTACCGGAGAAAGTCAAGAGTGGGGCAGT
AATATGGAACCGACCGGTTCGAAACGAAGAAGGAGCACCAGAAAAAAGGAGAAGAAGACAAAGCG
GCGGAAAAGGGGGAGGAGATGGGGGGCAAAAGCAAGTGAACAGAAAGTCAACGAACTCTGCTCTG
ACCTGGGGCCTGGAGGATGTGGAGCATGTGTTCTCTGAGGAGGATTACCACACGCTACCAACTACAAA
CCTTCAGCCAGTTCATGAGGCCCTAATTGCTAAGAAGAATCCTAAGATCCCAATGTCTAAGATGATGAC
CATCCTTGGGGCCAAATGGAGAGAGTTCAGTGCCAACAACCCCTTCAAGGGGTGAGCAGCTGCTGTGGC
GCGGCAGCGGCAGCAGCAGCAGCTGTAGCTGAGCAGGTGTGAGCTGCTGCTCGTCCGCCACCCCA
TAGCACCTCCGGACCCCGCCCTTCCACCACCCCTGCTGATATCCAGCCCCACCCATCCGAAG
AGCCAAAACCAAGAGGGCAAAGGTCCAGGCCATAAGAGGCGGAGTAAGAGCCCCGAGTGCCTGATGGA
CGCAAGAAGCTTCGGGAAAGAAAATGGCACCACTCAAATAAACTAGGGCTTCTGGGTGGCAAGAGGA
AGAAAGGAGGCTCGTATGTTTTTCAGAGCGACGAAGTCTGAACCAGAGGCTGAGGAATCAGACCTGGA
CAGTGGCAGTGTCCACAGTGCCTCAGGCCGCCTGATGGCCCTGTCCGCACCAAGAACTAAAGAGAGGC
CGGCCAGGAAGGAAGAAGAAGGTCCTGGGCTGTCTGCAGTGGCCGGGGAGGAGGTTGATGGCT
ACGAGACGGATCACCAGGATTACTGTGAGGTGTGCCAGCAGGTTGGGAAATTAATTCTGTGTGACACCTG
CCCTCGTGCCTACCACCTCGTCTGCCTTGATCCTGAGCTTGACCGGGCTCCAGAGGGCAAATGGAGCTGC
CCTCACTGTGAGAAGGAGGGGTCCAGTGGGAGGCAAGGAGGAAGAAGAAGAATACGAAGAGGAGGGAG
AGGAAGAAGGGGAGAAGGAGGAGGAGGATGATCAGTGGAGTACTGCCGCTATGCAAGGACGGCGGGGA
GCTCCTGTGCTGTGACCGGTGCATCTCCTCCTACCACATTCATTGTCTAAACCCTCCCCTGCCTGACATT



[View online >](#)

CCCAATGGTGAATGGCTGTGTCCCCGATGCACATGCCCCGTGCTGAAGGGTCGAGTGCAGAAGATCCTAC
 ATGGCGGTGGGGGAGCCACCTGTAGCAGTGCCAGCCCTCAACAGGCAGATGGAAATCCAGATGTCCC
 ACCCCCCGTCCTCTTCAAGGCAGATCAGAGCGAGAGTCTTTGTCAAGTGGGTAGGACTATCCTACTGG
 CACTGCTCCTGGGCCAAGGAGCTTCAGCTGAAATCTCCATTTGGTTATGTATCGAAACTACCAGCGGA
 AGAATGACATGGATGAGCCCCACCCTGGACTATGGCTCCGCGAGGATGATGGGAAGAGCGACAAGCG
 TAAAGTGAAAGACCCGCACTATGCTGAGATGGAGGAGAAGTACTATCGTTTTGCCATCAAGCCAGAGTGG
 ATGACCCGCCACCGCATCATCAACCACAGTGTGGATAAAAAAGGGGAATTACCCTATCTAGTAAAAATGGA
 GGGACTTACCATATGACCAGTCCACGTGGGAGGAAGATGAAATGAATATCCCTGAATACGAAGAACATAA
 GCAAAGCTACTGGAGACCCGAGAACTAATTATGGGGGAAGACCTGCCAGCCCCGCAAGTATAAGAAG
 AAGAAGAAGGAGCTACAGGGTGTGGGCTCCCAGTTCTCCACTAATGATCCTACCCTGAAATATGAGA
 CTCAGCCACGGTTTATCACAGCCACTGGAGGCACCCTGCACATGTATCAGTTGGAAGGGCTGAACGGCT
 ACGTCTCCTGGGCCAGGGCACTGACACCATCTAGCTGATGAGATGGGGCTAGGCAAGACCATACAA
 ACCATCGTCTTCTACTACTCTACAAGGAGGGCCACAAAAAGTCCCTTCTGGTGAGTCCCCAC
 TCTTACCATCATTAACTGGGAGCGGGAGTTCAGATGTGGGCACCCAAATCTATGTGGTGACATACAC
 GGGTGACAAGGACAGCCGGGCCATCATTGTGAGAATGAATTCTCCTTTGAGGACAATGCCATCAAAGGG
 GGCAAGAAAGCTTTTAAAGATGAAGAGGGAGGCACAGGTGAAGTCCATGTTCTCCTGACATCGTATGAGC
 TGATCACCATTGATCAGGCAGCACTTGGTTCATCCGCTGGGCCTGTCTGTGGTAGATGAGGCCATCG
 ACTCAAGAAACAACAGTCCAAGTTTTTCAGGGTCTCAATGGTTACAAGATAGATCATAAGTTGCTGCTG
 ACAGGAACCCATTGCGAATAATCTGGAGGAGCTTCCATCTCCTGAACCTCCTCACCCAGAGAGAT
 TTAACAACCTGGAGGGCTTCTGGAGGAGTTTGTGACATATCCAAGAGGACCAGATCAAGAACTGCA
 TGATTTGCTGGGGCCACACATGCTGCGGAGACTCAAGGCAGATGTCTTAAAGAACATGCCAGCCAAGACA
 GAGCTCATCGTTCGGGTGGAGCTAAGCCCATGCAGAAGAACTACTACAAATACATCCTGACTCGAAAT
 TTGAGGCCCTGAATTCACGAGGTGGTGGAAACAGGTGTCGCTGCTTAATATCATGATGGATCTTAAAGAA
 GTGCTGCAACCATCCATACCTTTTTCCCGTGGCTGCTATGGAGTCCCCAAACTCCCCAGTGCGGCTTAT
 GAGGGTGGGGCACTTATTAAGTCGCTGGGAAGCTCATGCTGCTCCAGAAGATGCTGCGAAAGCTGAAGG
 AGCAAGGACACCGAGTGCTCATCTTCTCGCAGATGACCAAAATGTAGACTTGCTTGAGGACTTCTTAGA
 CTATGAAGGCTACAAGTATGAGCGCATCGATGGTGGTATCACGGGTGCCCTGAGGCAGGAGGCCATCGAT
 CGGTTTAAATGCTCCTGGGGCCAAACAATCTGCTTCTCCTGTCCACCCGAGCTGGGGCCCTGGGCATCA
 ATCTGGCCACTGCTGACACTGTCATCATCTTTGATTCTGACTGGAACCCCAATGACATCCAGGCCTT
 TAGCCGGGCTCATCGGATTGGCCAGGCCAACAAAGTGATGATTTACCGGTTTGTGACTCGCGCTCAGTG
 GAAGAGCGAATCACACAAGTGGCCAAGGAAAGATGATGCTGACACACCTGGTTGTGCGGCTGGGCTGG
 GCTCCAAGGCAGGCTCCATGTCCAAGCAGGAGCTTACGACATTTCTCAAATTTGGCACTGAAGAGCTATT
 CAAGGATGAAAACGAGGGGGAGAACAAGGAGGAGGACAGCAGTGTGATTCATTATGACAATGAGGCCATC
 GCTCGGCTGTTGGACCGGAACCAGGATGCAACTGAGGACACTGACGTGCAGAACATGAATGAGTATCTCA
 GCTCCTTCAAGGTGGCACAGTACGTCGTGCGGGAAGAAGACAAGATTGAGGAAATGAGCGAGAGATCAT
 CAAGCAGGAGGAGAAATGTGGACCTGACTACTGGGAGAAGCTGCTGAGGCATCACTATGAGCAACAGCAG
 GAAGACCTAGCCCGGAATCTAGGCAAGGGCAAGCGGTTTCGAAGCAAGTTAACTACAATGATGCTGCTC
 AGGAAGACCAAGACAACCAAGTCAAGTACTCGTGGGTTTCAAGGAGGAGGATGAAGACTTCGATGAACG
 TCCTGAAGGGCGTAGACAGTCAAAGAGGCAGCTCCGGAATGAGAAAGATAAGCCACTGCCTCCACTGCTG
 GCCCGAGTCGGGGCAACATTGAGGTGCTGGGCTTCAACACCCGTCAGCGGAAGGCTTCTCAATGCTG
 TGATGCGCTGGGGATGCCACCACAGGATGCCTTACCACACAGTGGCTGGTGGGGACCTGAGGGGCAA
 GACTGAGAAGGAGTTTAAAGCCTATGTGTCTTTGTTTATGCGCCATCTGTGTGAGCCTGGGGCAGACGGC
 TCTGAAACCTTTGCCGATGGGGTCCCTCGGAGGGACTGAGTCGCCAGCAGGTGTTGACCCGATTGGAG
 TCATGTCTCTCGTCAAAAAGAAGGTGCAGGAGTTTGAACATCAATGGGCGTTGGTCAATGCCGGAAC
 GATGCCTGACCCAGCGCGATTCTAAGCGCTCCTCCAGAGCCTCCTCTCCTACCAAAACGCTCTCCACC
 ACTCCTGAGGCTTCTGCTACCAACAGTCCCTGCACCTCTAAACCTGCTACTCCAGCTCCAAGTGAGAAAG
 GAGAAGGCATAAGGACACCTCTTGAAGAAGGAGGAAAGCTGAAAACCAGGAGGAAAAGCCAGAGAAGAACAG
 CAGAAATGGGGAGAAGATGGAGACAGAGGCTGATGCCCCAGCCAGCCCATCACTTGGGGAGCGGCTG
 GAGCCAAGGAAGATTCCTCTAGAGGATGAGGTGCCAGGGGTGCCTGGAGAGATGGAGCCTGAACCTGGGT
 ACCGTGGGGACAGAGAGAAGTACGCCACAGAGTCGACGCCAGGAGAAAAGGGGGGAGGAGAAGCCGTTGGA
 TGGACAGGAACACAGGGAGAGCCGGAGGGGAAAACAGGGGATTTGGGCAAGAGAGAAGATGTAAGAGGT
 GACCGGGAGCTTCGACCAGGGCTCGAGATGAGCCACGGTCCAATGGGCGACGAGAGGAAAAGACAGAGA

AGCCCCGGTTCATGTTCAATATCGCCGATGGTGGCTTCACAGAGCTTCACACACTGTGGCAGAATGAGGA
 ACGGGCAGCTATTTCTCGGGAACTCAATGAGATCTGGCACAGAAGACATGACTATTGGCTTCTGGCT
 GGGATTGTCTCCATGGCTATGCACGGTGGCAGGACATCCAGAATGATGCTCAATTTGCCATTATCAACG
 AGCCATTTAAACTGAAGCCAATAAGGGGAACTTTCTGGAGATGAAAAAAGTTCTGGCCCGGAGGTT
 CAAGCTCTGGAGCAGGCGCTGGTATTGAGGAGCAGCTGCGGCGGGCGGCTACCTGAACCTGTGCGAG
 GAGCCGGCGCACCCGCCATGGCCCTCCACGCCGCTTCGCGGAGGCCGAGTGCCTGGCCGAGAGCCACC
 AGCACCTCTCAAGGAGTCGCTGGCGGGAAACAAGCCGGCCAACGCCGCTCCTGCACAAGGTTCTGAACCA
 GCTGGAGGAGTTGCTGAGCGACATGAAGCGGAGGTGACCCGCCTGCCAGCCACGCTGTCCCGAATACCC
 CCCATCGCAGCCCGCTTCCAGATGTCCGAGCGCAGCATCCTCAGCCGGCTGGCCAGCAAGGGCACGGAGC
 CTCACCCACACCCGGCTACCCGCCGGTCCCTACGCTACACCTCCGGGTACGGGGCGGCTTACGCGC
 CGCACCCGTAGGGGCCCTGGCGCCGAGGCGCAATTACAGCCAGATGCCTGCAGGGTCTTATCACA
 GCCGCCACCAACGCCCTCCAGTCTTGTGAAGAAGGAGAAGGAAATGGTGGGGCATTGGTGTACAGACG
 GGCTGGATCGGAAGGAGCCCGAGCCGGGAGGTGATCTGTATAGACGAC

ACGGGCCGCTCGAG - GFP Tag - GTTTAA

Protein Sequence:

>RG216755 representing NM_001005273
 Red=Cloning site Green=Tags(s)

MKAADTVILWARSKNDQLRISFPPGLCWGDRMPDKDDIRLLPSALGVKKRKRGPKKQKENKPGKPRKRKK
 RDSEEEFGSERDEYREKSESGGSEYGTGPRKRRRKHREKKEKTKRRKKGEGDGQKQVEQKSSATLLL
 TWGLEDEVEHVFSEEDYHTLTNYKAFSQFMRPLIAKKNPKIPMSKMMTILGAKWREFSANNPFKGSAAAVA
 AAAAAAAAAVAEQVSAAVSSATPIAPSGPPALPPPPAADIQPPPIRRRAKTEGKGGPHKRRSKSPRVPDG
 RKKLRGKKMAPLKIKLGLLGGKRRKGGSYVFSDEGPEPEAEESDLDSGSVHSASGRPDGPVRTKLLKRG
 RPRGKKKVLGCPAVAGEEEVDGYETDHDQYCEVCQQGGEIILCDTCPRAYHLVCLDPELDRAPGKWSC
 PHCEKEGVQWEAKEEEEEEEYEEGEEEGEKEEEDDHMEYCRVCKDGGELLCCDACISSYHIHCLNPLPDI
 PNGEWLCPRCTCPVLKGRVQKILHWRWGEPPVAVPAPQQADGNPDVPPRPLQGRSEREFFVKKWGLSYW
 HCSWAKELQLEIFHLVMYRNYQRKNDMDEPPPLDYSGGEDDGKSDKRKVKDPHYAEMEEKYYRFGIKPEW
 MTVHRIINHSDVKKGNHYHLVKWRDLPYDQSTWEEDEMNIPEYEEHKQSYWRHRELIMGEDPAQPRKYK
 KKKELQDGGPPSSPTNDPTVKYETQPRFITATGGTLHMYQLEGLNWLRFSWAQGTDITLADEMPLGKTIQ
 TIVFLYSLYKEGHTKGFLLVSAPLSTIINWEREFQMWAPKFYVVVYTGDKDSRAIIRENEFSFEDNAIKG
 GKAKFKMKREAQVKFHVLLTSYELITIDQAALGSIRWACLVVDEAHLKNNQSKFFRVLNGYKIDHKLLL
 TGTPLNLEELFHLNFLTPERFNLEGFLEEFADISKEDQIKKLDLHGPHMLRRLKADVFNKMPAKT
 ELIVRVELSPMQKYYKYILTRNFEALNSRGGNQVSLNIMMDLKKCCNHPYLPVAAMESPKLPSGAY
 EGGALIKSSGKMLLQKMLRKLKEQGHVLIQSMTKMLDLEDFLDYEGYKIERIDGGITGALRQEAID
 RFNAPGAQQFCLLSTRAGGLINLATADTVIIFDSDWNPNDIQAFSRAHRIGQANKVMIYRFVTRASV
 EERITQVAKRKMMLTHLVVRPGLGSKAGSMKQELDDILKFGTEELFKDENEGENKEEDSSVIHYDNEAI
 ARLLDRNQDATEDTDVQNMNEYLSFVKVAQYVVREEDKIEEIEREIIKQEENVDPDYWEKLLRHHYEQQQ
 EDLARNLKGKRVKQVNYNDAAQEDQDNQSEYSVGSSEEDDFDERPEGRRQSKRQLRNEKDKPLPPLL
 ARVGGNIEVLGFNTRQRKAFLNAYMRWGMPPQDAFTTQWLVRDLRGKTEKEFKAYVSLFMRHLCEPGADG
 SETFADGVPREGLSRQQVLTRIGVMSLVKKKVQEFEHINGRWSMPELMPDPSADSKRSSRASSPTKTSP
 TPEASATNSPCTSKPATPAPSEKGEIRTPLEKEEAENQEEKPEKNSRIGEKMETEADAPSPAPSLGERL
 EPRKIPLDEVPGVGEMEPGYPYRGDREKSATESTPGERGEEKPLDGQEHREPERGETGDLGKREDVKG
 DRELRPGRDEPRSNRREEKTEKPRFMFNADGGFTLHTLWQNEERAAISSGKLINEIWHRRHDYWLLA
 GIVLHGYPARWQIQNDAQFAIINEPFKTEANKGNFLEMKNKFLARRFKLLEQALVIEEQLRRAAYLNSQ
 EPAHPAMALHARFAEAELAESHQHLSKESLAGNKPANAVLHKVLNQLLELLSDMKADVTRLPATLSRIP
 PIAARLQMSERSILSRLASKGTEPHPTPAYPPGYAATPPGYGAAFSAAPVGAALAAAGANYSQMPAGSFI
 AATNGPPVLVKKKEKEMVGAALVSDGLDRKEPRAGEVICIDD

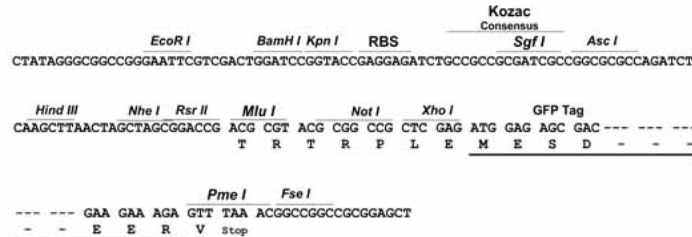
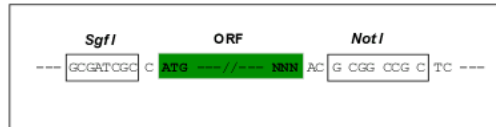
TRPLE - GFP Tag - V

Restriction Sites:

Sgfl-NotI

Cloning Scheme:

Cloning sites used for ORF Shutting:


ACCN: NM_001005273

ORF Size: 6000 bp

OTI Disclaimer: The molecular sequence of this clone aligns with the gene accession number as a point of reference only. However, individual transcript sequences of the same gene can differ through naturally occurring variations (e.g. polymorphisms), each with its own valid existence. This clone is substantially in agreement with the reference, but a complete review of all prevailing variants is recommended prior to use. [More info](#)
OTI Annotation: This clone was engineered to express the complete ORF with an expression tag. Expression varies depending on the nature of the gene.

Components: The ORF clone is ion-exchange column purified and shipped in a 2D barcoded Matrix tube containing 10ug of transfection-ready, dried plasmid DNA (reconstitute with 100 ul of water).

Reconstitution Method:

1. Centrifuge at 5,000xg for 5min.
2. Carefully open the tube and add 100ul of sterile water to dissolve the DNA.
3. Close the tube and incubate for 10 minutes at room temperature.
4. Briefly vortex the tube and then do a quick spin (less than 5000xg) to concentrate the liquid at the bottom.
5. Store the suspended plasmid at -20°C. The DNA is stable for at least one year from date of shipping when stored at -20°C.

RefSeq: [NM_001005273.3](#)
RefSeq Size: 6831 bp

RefSeq ORF: 6003 bp

Locus ID: 1107

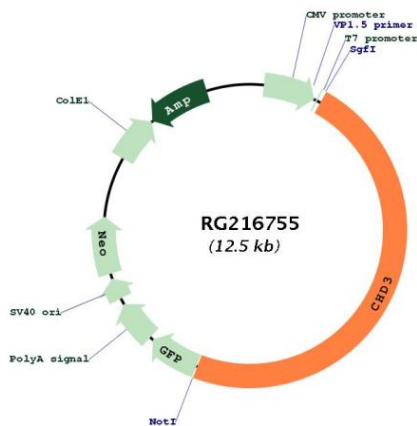
UniProt ID: [Q12873](#)

Cytogenetics: 17p13.1

Protein Families: Druggable Genome

Gene Summary: This gene encodes a member of the CHD family of proteins which are characterized by the presence of chromo (chromatin organization modifier) domains and SNF2-related helicase/ATPase domains. This protein is one of the components of a histone deacetylase complex referred to as the Mi-2/NuRD complex which participates in the remodeling of chromatin by deacetylating histones. Chromatin remodeling is essential for many processes including transcription. Autoantibodies against this protein are found in a subset of patients with dermatomyositis. Three alternatively spliced transcripts encoding different isoforms have been described. [provided by RefSeq, Jul 2008]

Product images:



Circular map for RG216755