

## Product datasheet for **RG216753**

### **EFEMP1 (NM\_001039348) Human Tagged ORF Clone**

#### **Product data:**

Product Type:	Expression Plasmids
Product Name:	EFEMP1 (NM_001039348) Human Tagged ORF Clone
Tag:	TurboGFP
Symbol:	EFEMP1
Synonyms:	DHRD; DRAD; FBLN3; FBNL; FIBL-3; MLVT; MTLV; S1-5
Mammalian Cell Selection:	Neomycin
Vector:	pCMV6-AC-GFP (PS100010)
E. coli Selection:	Ampicillin (100 ug/mL)



[View online »](#)

**ORF Nucleotide Sequence:**

>RG216753 representing NM\_001039348  
 Red=Cloning site Blue=ORF Green=Tags(s)

TTTTGTAATACGACTCACTATAGGGCGGCCGGGAATTCGTCGACTGGATCCGGTACCGAGGAGATCTGCC  
 GCC**CGGATCGCC**

ATGTTGAAAGCCCTTTCTAACTATGCTGACTCTGGCGTGGTCAAGTACAGGACACCGAAGAAACCA  
 TCACGTACACGCAATGCACTGACGGATATGAGTGGGATCCTGTGAGACAGCAATGCAAAGATATTGATGA  
 ATGTGACATTGTCCAGACGCTTGTAAAGTGGAAATGAAGTGTGTCAACCACTATGGAGGATACCTCTGC  
 CTTCCGAAAACAGCCAGATTATTGTCAATAATGAACAGCCTCAGCAGGAAACACAACCAGCAGAAGGAA  
 CCTCAGGGGAACACCGGGTGTAGCTGCCAGCAGCATGGCAACCAGTGGAGTGTGCCCGGGGTGG  
 TTTTGTGGCCAGTGTCTGCAGTCGCAGGCCCTGAAATGCAGACTGGCCGAAATAACTTTGTATCCGG  
 CGGAACCCAGTGACCCTCAGCGCATTCCCTCAAACCTTCCACCGTATCCAGTGTGCAGCAGGCTACG  
 AGCAAAGTGAACACAACGTGTGCAAGACATAGACGAGTGCAGTGCAGGGACGCACAACCTGTAGAGCAGA  
 CCAAGTGTGCATCAATTTACGGGATCCTTTGCATGTGAGTGCCTCCTGGATATCAGAAGCGAGGGGAG  
 CAGTGCCTAGACATAGATGAATGTACCATCCCTCCATATTGCCACCAAAGATGCGTGAATACACCAGGCT  
 CATTATTGCCAGTGCAGTCTGGGTTCAATTGGCAGCAAACAACCTATACCTGCGTAGATATAAATGA  
 ATGTGATGCCAGCAATCAATGTGCTCAGCAGTGTACAACATTCTTGGTTCATTCTGTGAGTGCAT  
 CAAGGATATGAGCTAAGCAGTGCAGGCTCAACTGTGAAGACATTGATGAATGCAGAACCTCAAGCTACC  
 TGTGTCAATATCAATGTGCAATGAACCTGGGAAATCTCATGTATGTGCCCCAGGGATACCAAGTGGT  
 GAGAAGTAGAACATGTCAAGATAAATGAGTGTGAGACCACAAATGAATGCCGGGAGGATGAAATGTGT  
 TGAATTATCATGGCGCTTCCGTTGTTATCCACGAAATCCTTGTCAAGATCCCTACATTCTAACCCAG  
 AGAACCGATGTGTTGCCAGTCTCAAATGCCATGTGCCGAGAAGTGCCTCAGTCAATAGTCTACAATA  
 CATGAGCATCCGATCTGATAGGCTGTGCCATCAGACATCTTCCAGATACAGGCCACAACCTATTTATGCC  
 AACACCATCAATACTTTTCGATTAAATCTGAAATGAAATGGAGAGTTCTACCTACGACAAAACAAGTC  
 CTGTAAGTGAATGCTTGTGCTCGTGAAGTCATTATCAGGACCAAGAGAACATATCGTGGACCTGGAGAT  
 GCTGACAGTCAGCAGTATAGGGACCTCCGCACAAGCTCTGTGTTAAGATTGACAATAATAGTGGGGCCA  
 TTTTCATTT

**ACGCGTACGCGGCCGCTCGAG** - GFP Tag - GTTTAA

**Protein Sequence:**

>RG216753 representing NM\_001039348  
 Red=Cloning site Green=Tags(s)

MLKALFLTMLTLALVKSQDTEETITYTQCTDGYEWDVPRQCKDIDECDIVPDACKGGMKCVNHYGGYLC  
 LPKTAQIIVNNEQPQETQPAEGTSGATTGVVAASSMATSGVLPGGGFVASAAAVAGPEMQTGRNNFVIR  
 RNPADPQRIPSNPSHRIQCAAGYEQSEHNVCQDIDECTAGTHNCRADQVCINLRGSFACQPPGYQKRGE  
 QCVDIDECTIPPYCHQRCVNTPGSFYQCSPGFQLAANNYTCVDINECDASNQCAQQCYNILGSFICQCN  
 QGYELSSDRLNCEIDECRTSSYLQYQCVNEPGKFSMCPQGYQVRSRTCQDINECETTNECREDEMC  
 WNYHGGFRCPYPRNPCQDPYILTPENRCVCPVSNAMCRELPQSIYKYMSIRSDRSVPSDIFQIQATTIYA  
 NTINTFRIKSGNENGEFYLRQTSPPVSAMLVVKLSLSPREHIVDLEMLTVSSIGTFRSSVLRLTIIVGP  
 FSF

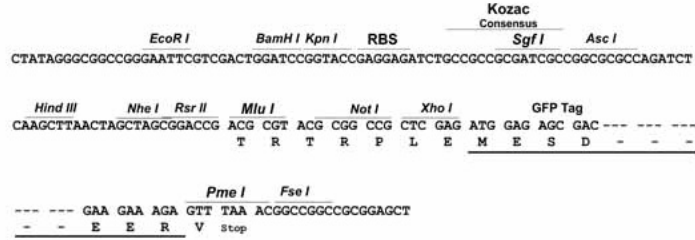
**TRTRPLE** - GFP Tag - V

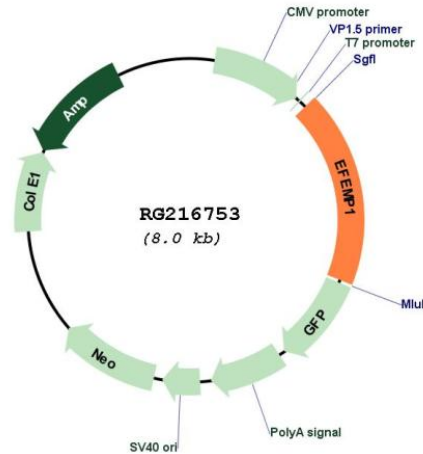
**Restriction Sites:**

Sgfl-Mlul

Cloning Scheme:

Cloning sites used for ORF Shutting:



**Plasmid Map:**


**ACCN:** NM\_001039348

**ORF Size:** 1479 bp

**OTI Disclaimer:** The molecular sequence of this clone aligns with the gene accession number as a point of reference only. However, individual transcript sequences of the same gene can differ through naturally occurring variations (e.g. polymorphisms), each with its own valid existence. This clone is substantially in agreement with the reference, but a complete review of all prevailing variants is recommended prior to use. [More info](#)

**OTI Annotation:** This clone was engineered to express the complete ORF with an expression tag. Expression varies depending on the nature of the gene.

**Components:** The ORF clone is ion-exchange column purified and shipped in a 2D barcoded Matrix tube containing 10ug of transfection-ready, dried plasmid DNA (reconstitute with 100 ul of water).

**Reconstitution Method:**

1. Centrifuge at 5,000xg for 5min.
2. Carefully open the tube and add 100ul of sterile water to dissolve the DNA.
3. Close the tube and incubate for 10 minutes at room temperature.
4. Briefly vortex the tube and then do a quick spin (less than 5000xg) to concentrate the liquid at the bottom.
5. Store the suspended plasmid at -20°C. The DNA is stable for at least one year from date of shipping when stored at -20°C.

**RefSeq:** [NM\\_001039348.3](#)

**RefSeq Size:** 2741 bp

**RefSeq ORF:** 1482 bp

**Locus ID:** 2202

**UniProt ID:** [Q12805](#)

**Cytogenetics:** 2p16.1

**Protein Families:** Secreted Protein

**Gene Summary:** This gene encodes a member of the fibulin family of extracellular matrix glycoproteins. Like all members of this family, the encoded protein contains tandemly repeated epidermal growth factor-like repeats followed by a C-terminus fibulin-type domain. This gene is upregulated in malignant gliomas and may play a role in the aggressive nature of these tumors. Mutations in this gene are associated with Doyme honeycomb retinal dystrophy. Alternatively spliced transcript variants that encode the same protein have been described. [provided by RefSeq, Nov 2009]