

Product datasheet for **RG216749**

PDE9A (NM_001001567) Human Tagged ORF Clone

Product data:

Product Type:	Expression Plasmids
Product Name:	PDE9A (NM_001001567) Human Tagged ORF Clone
Tag:	TurboGFP
Symbol:	PDE9A
Synonyms:	HSPDE9A2
Mammalian Cell Selection:	Neomycin
Vector:	pCMV6-AC-GFP (PS100010)
E. coli Selection:	Ampicillin (100 ug/mL)



[View online »](#)

ORF Nucleotide Sequence:

>RG216749 representing NM_001001567
 Red=Cloning site Blue=ORF Green=Tags(s)

TTTTGTAATACGACTCACTATAGGGCGGCCGGAATTCGTCGACTGGATCCGGTACCGAGGAGATCTGCC
 GCC**CGGATCGCC**

ATGGGATCCGGCTCCTCCAGCTACCGGCCAAGGCCATCTACCTGGACATCGATGGACGCATTAGAAGG
 TAATCTTCAGCAAGTACTGCAACTCCAGCGACATCATGGACCTGTTCTGCATCGCCACCGCCTGCCTCG
 GAACACGACCATCTCCCTGCTGACCACCGACGACGCCATGGTCTCCATCGACCCACCATGCCCGGAAT
 TCAGAACGCACTCCGTACAAAGTGAACCTGTGGCCATCAAGCAACTCTCCGAGAGAGAAGAATTAATCC
 AGAGCGTGTGGCGCAGTTGCAGAGCAGTTCTCAAGAGCATTAAAAATCAATGAACTGAAAGCTGAAGT
 TGCAAATCACTTGGCTGTCTAGAGAAACGCGTGAATTTGAAGGACTAAAAGTGGTGGAGATTGAGAAA
 TGCAAGAGTGACATTAAGAAGATGAGGGAGGAGCTGGCGCCAGAAGCAGCAGGACCAACTGCCCTGTA
 AGTACAGTTTTTTGGATAACCACAAGAAGTTGACTCCTCGACCGATGTTCCCACTTACCCCAAGTACCT
 GCTCTCTCCAGAGACCATCGAGGCCCTGCGGAAGCCGACCTTTGACGTCTGGCTTTGGGAGCCCAATGAG
 ATGCTGAGCTGCCTGGAGCACATGTACCACGACCTCGGGCTGGTCAAGGACTTCAGCATCAACCCTGTCA
 CCCTCAGGAGGTGGCTGTTCTGCGTCCACGACAACACCCCTTCCACAACCTCCGGCAGTCTG
 CTTCTGCGTGGCCAGATGATGTACAGCATGGTCTGGCTCTGCAGTCTCCAGGAGAAGTTCTCACAACG
 GATATCCTGATCCTAATGACAGCGGCCATCTGCCACGATCTGGACCATCCCGGCTACAACAACACGTACC
 AGATCAATGCCCGCACAGAGCTGGCGGTCCGCTACAATGACATCTCACCGCTGGAGAACCACCACTGCGC
 CGTGGCCTTCCAGATCCTCGCCGAGCCTGAGTGAACATCTTCTCCAACATCCCACCTGATGGGTTCAAG
 CAGATCCGACAGGGAATGATCACATTAATCTTGGCCACTGACATGGCAAGACATGCAGAAATATGGATT
 CTTTCAAAGAGAAAAATGGAGAATTTTACTACAGCAACGAGGAGCACATGACCCTGCTGAAGATGATTTT
 GATAAAATGCTGTGATATCTCTAACGAGGTCGTCCTCAATGGAAGTCGCAGAGCCTTGGGTGGACTGTTA
 TTAGAGGAATATTTTATGCAGAGCGACCGTGAGAAGTCAGAAGGCCTTCTGTGGCACCGTTTATGGACC
 GAGACAAAGTGACCAAGGCCACAGCCAGATTGGGTTTCAAGTTTGTCTGATCCCAATGTTTGAAC
 AGTGACCAAGCTTCCCATGGTTGAGGAGATCATGCTGCAGCCACTTTGGGAATCCCAGATCGCTAC
 GAGGAGCTGAAGCGGATAGATGACGCCATGAAAGAGTTACAGAAGAAGACTGACAGCTTGACGTCTGGGG
 CCACCGAGAAGTCCAGAGAGAGAAGCAGAGATGTGAAAAACAGTGAAGGAGACTGTGCC

ACGGGCCGCTCGAG - GFP Tag - GTTTAA

Protein Sequence:

>RG216749 representing NM_001001567
 Red=Cloning site Green=Tags(s)

MGSGSSSYRPKAIYLDIDGRIQKVIKSKYCNSSDIMDLFCIATGLPRNTTISLLTTDDAMVSIPTMPAN
 SERTPYKVRPVAIKQLSEREELIQSVLAQVAEQFSRAFKINELKAEVANHLAVLEKRVELEGLKVVEIEK
 CKSDIKKMREELAARSSRTNCPCKYSFLDNHKKLTPRRDVPTYPKYLLSPETIEALRKPTFDVWLWEPNE
 MLSCLEHMYHDLGLVRDFSINPVTLRRWLFVHDNYRNNPFHFRHCFVAQMMYSMVWLCSLQEKFSQT
 DILILMTAAICHDLDPGYNNTYQINARTELVRYNDISPLENHHCAVAFQILAEPECNIFSNIPPDGFK
 QIRQGMITLILATDMARHAEIMDSFKEKMFNFDYSNEEHMTLLKMLIKCCDISNEVRPMEVAEPWVDC
 LEEYFMQSDREKSEGLPVAPFMDRDKVTKATAQIGFIKFLIPMFETVTKLFPVVEIIMLQPLWESRDY
 EELKRIDDAMKELQKKTDSLTSGATEKSRERSRDVKNSEGDC

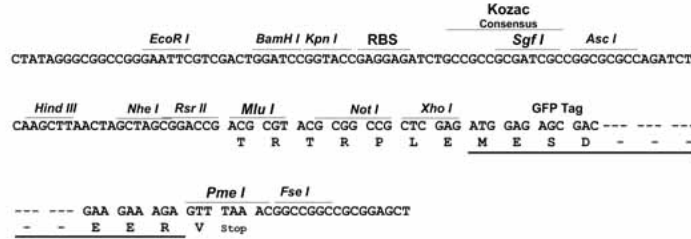
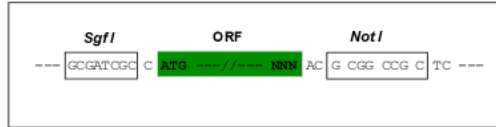
TRPLE - GFP Tag - V

Restriction Sites:

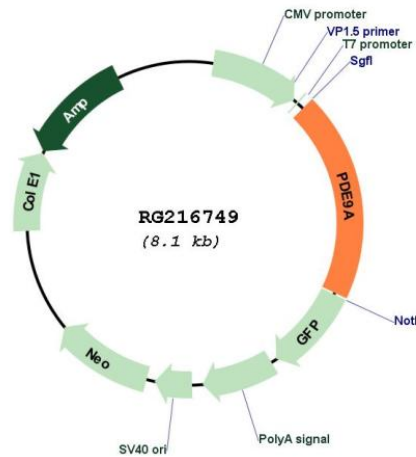
Sgfl-NotI

Cloning Scheme:

Cloning sites used for ORF Shuttling:



Plasmid Map:



ACCN:	NM_001001567
ORF Size:	1599 bp
OTI Disclaimer:	The molecular sequence of this clone aligns with the gene accession number as a point of reference only. However, individual transcript sequences of the same gene can differ through naturally occurring variations (e.g. polymorphisms), each with its own valid existence. This clone is substantially in agreement with the reference, but a complete review of all prevailing variants is recommended prior to use. More info
OTI Annotation:	This clone was engineered to express the complete ORF with an expression tag. Expression varies depending on the nature of the gene.
Components:	The ORF clone is ion-exchange column purified and shipped in a 2D barcoded Matrix tube containing 10ug of transfection-ready, dried plasmid DNA (reconstitute with 100 ul of water).
Reconstitution Method:	<ol style="list-style-type: none">1. Centrifuge at 5,000xg for 5min.2. Carefully open the tube and add 100ul of sterile water to dissolve the DNA.3. Close the tube and incubate for 10 minutes at room temperature.4. Briefly vortex the tube and then do a quick spin (less than 5000xg) to concentrate the liquid at the bottom.5. Store the suspended plasmid at -20°C. The DNA is stable for at least one year from date of shipping when stored at -20°C.
RefSeq:	NM_001001567.1 , NP_001001567.1
RefSeq Size:	1923 bp
RefSeq ORF:	1602 bp
Locus ID:	5152
UniProt ID:	O76083
Cytogenetics:	21q22.3
Protein Families:	Druggable Genome
Protein Pathways:	Progesterone-mediated oocyte maturation, Purine metabolism
Gene Summary:	The protein encoded by this gene catalyzes the hydrolysis of cAMP and cGMP to their corresponding monophosphates. The encoded protein plays a role in signal transduction by regulating the intracellular concentration of these cyclic nucleotides. Multiple transcript variants encoding several different isoforms have been found for this gene. [provided by RefSeq, Jul 2008]