

Product datasheet for **RG216739**

DNMBP (NM_015221) Human Tagged ORF Clone

Product data:

Product Type:	Expression Plasmids
Product Name:	DNMBP (NM_015221) Human Tagged ORF Clone
Tag:	TurboGFP
Symbol:	DNMBP
Synonyms:	ARHGEF36; CTRCT48; TUBA
Mammalian Cell Selection:	Neomycin
Vector:	pCMV6-AC-GFP (PS100010)
E. coli Selection:	Ampicillin (100 ug/mL)
ORF Nucleotide Sequence:	>RG216739 representing NM_015221 Red=Cloning site Blue=ORF Green=Tags(s)

TTTTGTAATACGACTCACTATAGGGCGGCCGGAATTCGTCGACTGGATCCGGTACCGAGGAGATCTGCC
GCC**CGATCGCC**

ATGGAGGCTGGCTCAGTGGTTCGAGCCATTTTGGACTTCTGCCCTAGCGTATCAGAAGAAGTCCCGCTCT
TTGTGGGAGATATTATTGAGGTGCTGGCAGTGGTGGATGAATTTGGCTTCTAGGAAAGAAGGAGGATGT
TACAGGACAATCCCCAGCAGTTTTGTGAAATTTGTGACCATTCCAGTCTAAAAGAGGGAGAGAGGCTG
TTTGTGTGCAATTTGAATTCACATCCCAAGAGTTGGATAATCTTCCCCTCCATCGAGGTGACCTGGTGA
TTCTCGATGGCATTCCCCTGCAGGCTGGCTGCAGGGCCGAAGCTGCTGGGGCGCACGGGGCTTCTTCCC
ATCTTCATGTGTCCGCGAGCTCTGCCTCTCCTCACAGAGCCGGCAGTGGCACTCCAGAGCGCCCTGTTT
CAGATTCGGAATATTCCATGGGACAAGCCCGGCCCTAATGGGGCTTTCTGCTCAGCTGGATGAAGAGC
TGGACTTCAGGGAAGGGGATGTGATCACCATTATTGGAGTTCTGAACCAGGCTGGTTTGAAGGGGAGTT
AGAGGGCCGAAGAGGCATTTTTCCAGAAGGTTTTGTAGAGCTGTTGGGGCCCTGAGGACTGTGGATGAG
TCAGTAAGTTCTGGAAATCAAGATGACTGCATTGTTAATGGTGAAGTAGATACCCCGTAGGAGAAGAAG
AGATAGGGCCGGATGAGGATGAGGAGGAGCCAGGACCTATGGGGTCGCCCTGTACAGATTCCAAGCCCT
GGAGCCAAATGAGCTGGATTTTCGAGGTTCGGGATAAAAATCCGAATCTGGCGACCTTGAAGATGGCTGG
CTGGAAGGATCCCTGAAGGGCAGGACAGGCATTTTCTTACCGTGGTGGAAATTAATGTCCTGACACAC
GGGTGGAGGAAACCATGGCTCTGCCCCAGGAAGGCAGCCTTGCCAGGATCCCGGAAACTCTTTGGATTG
TTTGGAGAACACCTTAGGAGTAGAGGAACAAAGACATGAAACCAGTGACCATGAGGCCGAGGAGCCTGAC
TGCATTATTTCTGAAGCACCCACTTCTCCCCTCGGTCACTGACTTCAGAGTATGACACAGACAGAAACT
CTTATCAGGACGAGGACACCGCAGGAGGGCCCCGAGAAGCCAGGCGTGGAGTGGGAAATGCCTCTTGC
CACAGACTCTCCACATCTGACCCTACAGAAGTAGTCAATGGTATTTCTCCCACTCAGGTCCCTTTT
CATCCCAACTGCAGAAAAGCCAGTATTATTCTACAGTGGGAGGAAGCCACCCGCACTCAGAACAGTACC
CCGACCTTCTCCCCTAGAAGCAAGGACTAGAGACTATGCCAGCCTACCTCCCAAAGAATGATTTCCCA
GCTAAAACCTTTCAGAAGCCAGTGCTCCCTCTTACAGGGGCTCTTCTGTTTCAGTTCAGGGTATGC



[View online >](#)

AAACCCAGACAATCAAGTCTCAGCTCCACAACCTAGCAAGTTATACTAAAAAGCACACACGTCCAGTG
TTTACTCCATCTCAGAGAGATTGGAGATGAAGCCTGGTCCGCAAGCCCAAGGGCTTGTATGGAAGCAGC
AACACATTCACAGGGAGACGGCAGCACTGACCTGGACTCGAAGCTGACACAACAGCTGATCGAGTTTGG
AAGAGCTTGGCAGGGCCCGGCACAGAGCCAGATAAAAATTTACGCCACTTTTCAATCATGGACTTTAACT
CTGAGAAGGATATTGTCCGAGGTTCTCAAAGTTAATCACCGAGCAGGAGCTGCCGAAAGGAGAAAAGGC
CCTAAGGCCACCGCCACCTCGTCCCTGTACTCCGGTATCCACTTCTCCCCATTTGCTGGTGGACCAGAAC
CTAAAACCTGCACCACCCTTGGTGGTGGCACCCTCTCGCCAGCTCCCCGCTCCCTCAGCAGCAGCAGA
GAACGAATGCGGTATCCCCAAGCTCCTATCTCGACACCCTCCTACCTGTGAGACCTTAGAAAAGGAGGG
CCCTGGTCATATGGGAAGGAGTCTGGACCAGACCTCCCCATGCCCTTAGTGCTGGTGGAGATTGAGGAA
ATGGAGCGGGACTTGGATATGTACAGTAGAGCTCAAGAAGAGCTAAACCTCATGTGGAGGAGAAGCAGG
ATGAATCATCAAGAGCAGAGACCCTCGAGGATCTCAAGTTCTGTGAAAGTAACATTGAAAGTTTGAATAT
GGAACCTCAGCAACTAAGAGAAATGACGCTCCTCTCCTCCAGTCTTCATCACTGGTGGCCCTTCTGGG
TCTGTGTCTGCCGAAAATCCAGAGCAGAGGATGCTGGAGAAGAGAGCCAAGGTCATAGAAGAACTTCTTC
AGACAGAAAGAGACTACATTCGGGATCTGGAAATGTGTATTGAGCGGATCATGGTACCCATGCAGCAGGC
ACAGGTACCAAACATTGATTTTGGAGGACTTTTGGAAAATATGCAGATGGTGATTAAGGTCTCGAAGCAA
TTATTGGCTGCTCTGAAATCAGCGATGCTGTAGGACCTGTGTTCTTGGTCACCGGGATGAGCTTGAGG
GAACATACAAGATTTACTGCCAGAATCATGATGAGGCCATTGCGTGTCTGAAATCTACGAGAAGGATGA
GAAGATCCAGAAGCATCTTCAGGACTCCTTGGCAGATCTGAAGAGCCTATACAACGAATGGGGATGCACA
AATTATATTAACCTGGGCTCCTTCTCATCAAACCAAGTACAGAGAGTAATGCGTTACCCGCTGTTGCTAA
TGGAGTTGCTGAATCCACCCGAGAATCCACCCAGATAAAGTGCCTTTAACCAATGCAGTCTTGGCGT
CAAGGAAATCAACGTTAACATTAATGAATATAAACGGCGAAAGGACCTGGTCTCAAGTACCGTAAGGGT
GATGAAGATAGCCTTATGGAGAAAATTTCCAACTGAACATCCACTCCATCATCAAGAAAATCCAACCGAG
TTAGCACTCACCTGAAGCATCTCACTGGCTTTGCTCCTCAGATAAAAAGATGAAGTATTTGAAGAAACAGA
AAAAAACTTCCGAATGCAAGAAAGATTGATTAAGTCTTTTATCCGAGACCTGTCTCTACCTCCAGCAC
ATCCGGGAGTCCGCATGTGTGAAAGTGGTGGCTGCTGTGAGCATGTGGGATGTGTGCATGGAGAGAGGAC
ACCGGGACCTGGAGCAGTTTGGAGGGTGCATCGCTACATCAGTGACCAGCTCTTCAAAAATTTAAGGA
GAGGACAGAGCGGCTTGTATCTCCCCCTAAATCAGTTACTGAGCATGTTTACAGGGCCCCATAAGCTG
GTACAGAAACGCTTTGACAAGCTCCTGGACTTCTATAACTGTACAGAACGGGCAGAAAAGCTAAAGGACA
AGAAGACCCTGGAGGAGCTGCAGTCGGCCCGGAACAATATGAGGCCCTGAATGCACAGCTGCTGGATGA
GCTGCCAAGTCCACCAGTACGCCAGGGCTCTTACCAACTGTGTCCACGGCTATGCTGAAGCCAC
TGTGACTTTGTGACCAGGCTCTGGAGCAATTAAGCCACTGCTTTCGTTACTCAAAGTGGCTGGCAGAG
AGGGAAACCTTATCGCCATCTTCCAGAAAGAGCACAGCAGAGTTCTGCAGCAACTCCAGGTTTTTACCTT
CTTCCCGAGTCTCTTCCAGCTACCAAGAAACCGTTTGGAGGAAAACCTTACCCGCGCAGTCTGCTCGA
AAGCCACTCCTGGGCTGCCAAGTTACATGCTACAGTCAGAAGAACTCCGGGCTCCCTCCTGGCCAGGT
ATCCCCCTGAAAACTCTTCCAGGCAGAACGAACTTCAATGCTGCCAAGACTTGGATGTCTCACTTTT
GGAAGGTGACCTGGTGGTGTGATTAAGAAAAAGACCCCATGGCAGCCAGAACCGCTGGCTGATTGAC
AATGGAGTCACCAAAGGCTTGTGTACAGCTCTTCTAAAGCCCTACAATCCTCGCCGACGCACTCCG
ATGCTCCGTGGTAGCCACTCTCCACAGAGTCTGAGCACGGCAGCTCCTCCCCAGGTTCCACGCCA
GAACAGCGGCAGCACCTGACCTTCAACCCAGCAGCATGGCTGTATCCTTTACCTCGGGTCTTGGCCAG
AAGCAGCCTCAAGATGCATCTCCTCCGCAAAAAGAAATGTGACCAAGGAACCTCAGTGCATCCCTAAATC
CGAGTAATTCAGAGAGTAGTCTTCCAGATGCCCTTCCAGCCAGACTCCACCTCCAGCCAAGGTGAGG
GGACTCTGCAGATGTAGCTAGAGATGTAAGCAGCCACTGCCACGCCGAGGAGTACCAGCACTTCCAGG
CATCCAGAAATAGTTGGCTACTCCGTACCAGGACGAAAATGGGCAAAGTCAAGACCTCGTCAAAGGATGTG
CAAGAACAGCCAGGCTCCGGAAGACAGAAGTACAGAGCCAGATGGCAGTGGGAGGAGGCAAGCAACAGGT
CTATTTGCTGTCTACACCTTCAAGGCACGAAACCCAAATGAGCTGAGCGTGTGACCAATCAGAAACTC
AAGATCCTCGAGTTAAAGATGTTACAGGAAATACAGAGTGGTGGTTAGCTGAGGTTAACGGGAAGAAGG
GCTACGTTCCCTCAATTATATCCGCAAAACCGAGTACACC

ACGCGTACGCGGCCGCTCGAG - GFP Tag - GTTTAA

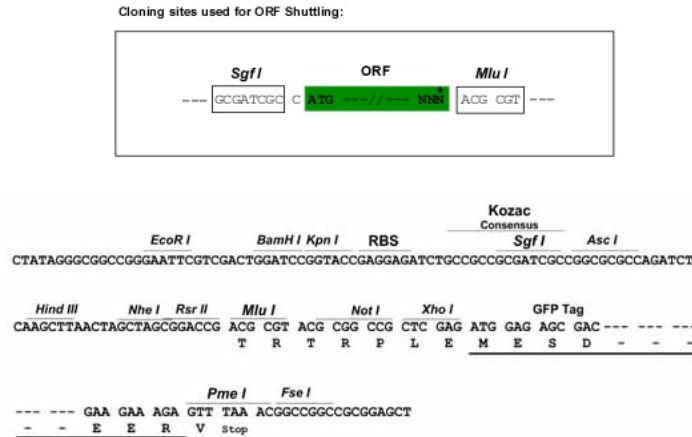
Protein Sequence: >RG216739 representing NM_015221
 Red=Cloning site Green=Tags(s)

```
MEAGSVVRAIFDFCPSVSEELPLFVGDIEVLAVVDEFWLLGKKEDVTGQFPSSFVEIVTIPSLKEGERL
FVCICEFTSQELDNLPLHRGDLVLDGIPTAGWLQGRSCWARGFFPSSCVRELCLSSQSRQWHSQSALF
QIPEYSMGQARALMGLSAQLDEELDFREGDVITIIIGVPEPGWFEGELEGRRGIFPEGFVELLGPLRTVDE
SVSSGNQDDCIVNGEVDTPVGEIEIGPDEDEEEPGTYGVALYRFQALEPNELDFEVGDKIRILATLEDGW
LEGLSKGRTGIFPYRFVKLCPDTRVEETMALPQEGSLARIPETSLDCLENTLGVEEQRHETSDHEAEEP
CIISEAPTSPLGHLTSEYDTRNSYQDEDTAGGPPRSPGVWEMPLATDSPTSPTSDPTVVNGISSQPQVFF
HPNLQKSQYYSTVGGSHPHSEQYPDLLPLEARTDYASLPPKRMYSQKTLQKPVLPYRGSSVSASRVV
KPRQSSPQLHNLASYTKKHTSSVYSISERLEMKPGPQAQGLVMEATHSQDGDGTDLDSKLTQQLIEFE
KSLAGPGTEPDKILRHFSIMDFNSEKDIVRGSSKLITEQELPERRKALRPPPPRPCTPVSTSPHLLVDQN
LKPAPPLVVRPSRAPLPPSAQQRNAVSPKLLSRHRPTCETLEKEGPGHMGRSLDQTSPCPLVLRIEE
MERDLDMYSRAQEELNLMLEEKQDESSRAETLEDLKFCESNIESLNMELQQLREMTLLSSQSSSLVAPSG
SVSAENPEQRMLEKRAKVEEELLQTERDYIRDLEMCIERIMVPMQQAQVFNIDFEGLFGNMQMVIKYSKQ
LLAALEISDAVGPVFLGHRDELEGTYKIYQNHDEAIALLEIYEKDEKIQKHLQDSLADLKSLYNEWGCT
NYINLGSFLIKPVQRMRYPLLLMELLNSTPESHDPKVPILTNAVLAVKEINVNINEYKRRKDLVLKYRKG
DEDSLMEKISKLNIHSIIKKSNRVSSHKHLTGFAPQIKDEVFEETEKNFRMQLERIKSFIRDLSLYLQH
IRESACVKVVAASMWDVCMERGHDRLEQFERVHRYISDQLFTNFKERTERLVISPLNQLLSMFTGPHKL
VQKRFDKLLDFYNCTERAELKDKKKTLEELQSARNNYEALNAQLLDELPKFHQYAQGLFTNCVHGYAEA
CDFVHQALEQLKPLL SLLKVAGREGNLIAIFHEEHSRVLQQLQVFTFFPESLPATKKPFERKTIDRQSAR
KPLLGLPSYMLQSEELRASLLARYPPEKLFQAERNFNAQDLVSLLEGLDVGVIKKKDPMGSRWLID
NGVTKGFVYSSFLKPYNRRSHSDASVGSHTSESEHGSSSPRFRQNSGSTLTFNPSSMAVSFTSGSCQ
KQPQDASPPPKECDQGTLSASLNPSNSESSPDRCPDSDSTSQPRSGDSADVARDVKQPTATPRSRYNFR
HPEIVGYSVPGRNGQSQDLVKGCARTAQAPEDRSTPEPDGSEAEGNQVYFAVYTFKARNPNELSVSANQKL
KILEFKDVTGNTEWLLAEVNGKKGYVPSNYIRKTEYT
```

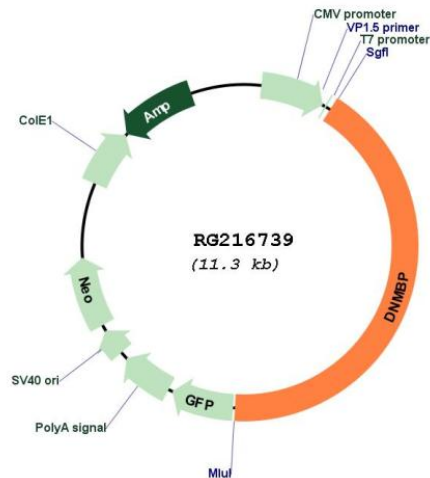
TRTRPLE - GFP Tag - V

Restriction Sites: SgfI-MluI

Cloning Scheme:



Plasmid Map:



ACCN: NM_015221

ORF Size: 4731 bp

OTI Disclaimer: The molecular sequence of this clone aligns with the gene accession number as a point of reference only. However, individual transcript sequences of the same gene can differ through naturally occurring variations (e.g. polymorphisms), each with its own valid existence. This clone is substantially in agreement with the reference, but a complete review of all prevailing variants is recommended prior to use. [More info](#)

OTI Annotation: This clone was engineered to express the complete ORF with an expression tag. Expression varies depending on the nature of the gene.

Components: The ORF clone is ion-exchange column purified and shipped in a 2D barcoded Matrix tube containing 10ug of transfection-ready, dried plasmid DNA (reconstitute with 100 ul of water).

Reconstitution Method:

1. Centrifuge at 5,000xg for 5min.
2. Carefully open the tube and add 100ul of sterile water to dissolve the DNA.
3. Close the tube and incubate for 10 minutes at room temperature.
4. Briefly vortex the tube and then do a quick spin (less than 5000xg) to concentrate the liquid at the bottom.
5. Store the suspended plasmid at -20°C. The DNA is stable for at least one year from date of shipping when stored at -20°C.

RefSeq: [NM_015221.1](#), [NP_056036.1](#)

RefSeq Size: 4734 bp

RefSeq ORF: 4734 bp

Locus ID: 23268

UniProt ID: [Q6XZF7](#)

Cytogenetics: 10q24.2

Gene Summary: This gene encodes a protein belonging to the guanine nucleotide exchange factor family, and which regulates the configuration of cell junctions. It contains multiple binding sites for dynamin and thus links dynamin to actin regulatory proteins. Polymorphisms in this gene have been linked to Alzheimer's disease in some populations, though there are conflicting reports of such linkages in other populations. Alternative splicing results in multiple transcript variants. [provided by RefSeq, Dec 2015]