

## Product datasheet for **RG216731**

### LARP4 (NM\_052879) Human Tagged ORF Clone

#### Product data:

Product Type:	Expression Plasmids
Product Name:	LARP4 (NM_052879) Human Tagged ORF Clone
Tag:	TurboGFP
Symbol:	LARP4
Synonyms:	PP13296
Mammalian Cell Selection:	Neomycin
Vector:	pCMV6-AC-GFP (PS100010)
E. coli Selection:	Ampicillin (100 ug/mL)



[View online »](#)

ORF Nucleotide  
Sequence:

>RG216731 representing NM\_052879  
Red=Cloning site Blue=ORF Green=Tags(s)

TTTTGTAATACGACTCACTATAGGGCGGCCGGAATTCGTCGACTGGATCCGGTACCGAGGAGATCTGCC  
GCCGCGATCGCC

ATGTTGCTTTTCGTGGAGCAGGTAGCATCTAAAGGAAGTGGTTTAAATCCTAATGCCAAAGTATGGCAAG  
AAATTGCTCCTGGAAATACTGATGCCACCCAGTAACTCATGGAAGTAAAGCTCTTGGCATGAAATAGC  
AGCTACATCAGGTGCTCATCCTGAGGGTAAATGCAGAGCTCTCAGAAGATATATGTAAAGAATATGAAGTA  
ATGTATTCTTCATCTTGTGAAACCAAGAATACTACAGGCATTGAAGAATCAACTGATGGGATGATTT  
TAGGACCAGAAGATCTGAGTTACCAATATATGATGTTTCCGGAGAAAGCAATTCAGCAGTTTCTACAGA  
AGACCTAAAAGAATGTCTGAAGAAACAATTAGAATTCTGTTTTTTCAGGAGAAAATTTGTCAAAGGATCTT  
TACTTGATATCTCAAATGGATAGTGATCAGTTCATCCCAATTTGGACAGTTGCCAACATGGAAGAAATAA  
AAAAGTTGACTACAGACCCTGATCTAATCTTGAAGTGTAAAGATCTTCTCCCATGGTACAAGTTGATGA  
GAAGGGTGAGAAAGTGAGACCAAGTCATAAGCGTTGTATTGTAATTCTTAGAGAGATTCTGAAACAACA  
CCAATAGAGGAAGTGAAAGGTTTGTTCAAAAGTAAAAGTGCCTCCAAAGTGATAAGCTGTGAGTTTGCAC  
ACAATAGCAACTGGTATATCACTTTCCAGTCAGACACAGATGCACAACAGGCTTTTAAATCTTAAGAGA  
AGAAGTAAAACATTTACAGGCAAGCCAATTATGGCAAGGATAAAAGCCATCAATACATTTTTTGCTAAG  
AATGGTTATCGATTAATGGATTCTAGTATCTATAGTCACCCCAATTCAAACTCAAGCACAGTATGCCTCCC  
CAGTCTTTATGCAGCCTGTATATAATCCTCACCAACAGTACTCGGTCTATAGTATTGTGCCTCAGTCTTG  
GTCTCAAATCCTACACCTTACTTTGAAACACCACTGGCTCCCTTTCCCAATGGTAGTTTTGTGAATGGC  
TTTAATTCGCCAGGATCTTATAAAACAATGCTGCTGCTATGAATATGGGTGACCATTCAAAAAATC  
GTGTGAAGCCTCAGTTTAGGTCATCTGGTGGTTTCCAGCACTCAACAGAGGGCTCTGTATCCTTGGGGGA  
TGGACAGTTGAACAGATATAGTTCAAGAACTTTCCAGCTGAACGGCATAACCCACAGTAACTGGGCAT  
CAGGAGCAAACCTTACCTCAGAAGGAGACTTCCACTTTGCAGGTGGAACAGAATGGGGACTATGGTAGGG  
GCAGGAGAACTCTCTCAGAGGTCGAAGACGACGAGAAGATGACAGGATCTCAAGACCTCATCCTTCAAC  
AGCTGAATCAAAGGCTCCAACACCAAAGTTTGACTTATTAGCCTCAAATTTCCACCTTTACCTGGAAGT  
TCATCAAGAAATGCCAGGTGAAGTCTGTTTGGAGAATAGGATGTCTGATGTTGTTAAAGGTGTCTACAAAG  
AAAAGGATAATGAAGAGTTGACAATTAGTTGCCAGTGCCTGCAGATGAGCAGACAGAATGCACTTCTGC  
CCAGCAACTCAATATGAGTACCAGTTCTCCATGTGCTGCTGAGCTTACTGCATTAAGCACAACCTCAGCAA  
GAAAAGGATCTAATAGAAGATTCTCTGTTTCAAGGATGGTCTCAATCAGACAACCTATACCAGTTTCTC  
CTCCAAGTACTACAAAGCCATCGAGGGCAAGTACTGCTTACCATGTAATAATAACATAAATGCAGCTAC  
AGCTGTGGCTCTACAGGAACCCCGAAAGTTAAGTTATGCTGAAGTGTGCCAGAAGCCCCCTAAAGAGCCA  
TCTTCAGTTCTTGTGCAGCCACTACGGGAACCTTCGCTCCAATGTGGTGTCTCCCAAAAAATGAAGACA  
ATGGAGCTCCTGAGAAGTCCGTTGAGAAACCATGAGAAGCCAGAAGCAAGGGCTAGTAAGGATTATTC  
TGGCTTCCGAGGCAATATAATCCCAGGGGAGCAGCAGGAAAAATCAGGGAACAGAGACGCCAGTTTAGC  
CATAGGGCTATACCTCAGGGAGTGACTCGACGTAATGGCAAAGAGCAATATGTGCCACCCAGATCACCAA  
AG

ACGCGTACGCGGCCGCTCGAG - GFP Tag - GTTTAA

Protein Sequence: >RG216731 representing NM\_052879  
 Red=Cloning site Green=Tags(s)

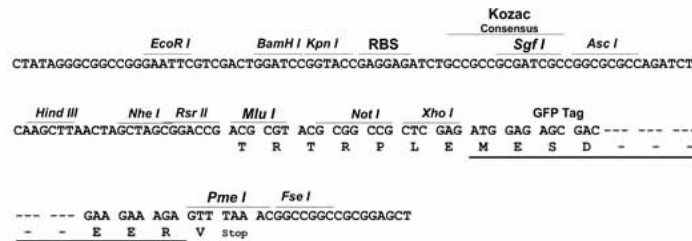
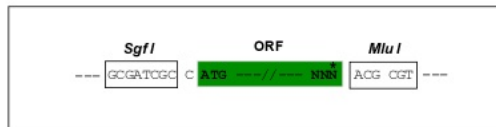
MLLFVEQVASKGTGLNPNKVVWQEIAPGNTDAPVTHGTESSWHEIAATSGAHPEGNAELSEDICKEYEV  
 MYSSSCETTRNTTGIESTDGMILGPEDLSYQIYDVSGESNSAVSTEDLKECLKKQLEFCFSRENLSKDL  
 YLISQMDSDQFIPIWTVANMEEIKLLTDPDLILEVLRSSPMVQVDEKGEKVRPSHKRCIVILREIPETT  
 PIEEVKGLFKSENCPKVISCEFAHNSNWIYITFQSDTDAQQAFKYLREEVKTFFQGKPIMARIKAINTEFFAK  
 NGYRLMDSIYSHPIQTQAQYASPVFMQPVYNPHQQYSVYSIVPQSWSPNPTPYFETPLAPFPNGSFVNG  
 FNSPGSYKTNAAMNMGRPFQKNRVKPKQFRSSGGSEHSTEGSVSLGDDQLNRYSSRNFP AERHNPTVTGH  
 QEQTYLQKETSTLQVEQNGDYGRGRRTLFRGRRRREDDRISRPHPSTAESKAPTPKFDLLASNFPLPGS  
 SSRMPGELVLENRMSDVYKGVYKEKDNEELTISCPVPADEQTECTSAQQLNMSTSSPCAELTALSTTQQ  
 EKDLIEDSSVQKDGLNQTIPVSPSTTKPSRASTASPCNNNINAATAVALQEPRKLSYA EVCQKPPKEP  
 SSVLVQPLRELRSNVVSPTKNEDNGAPENSVEKPHEKPEARASKDYSGFRGNIIPRGAAGKIREQRRQFS  
 HRAIPQGVTRRNGKEQYVPPRSPK

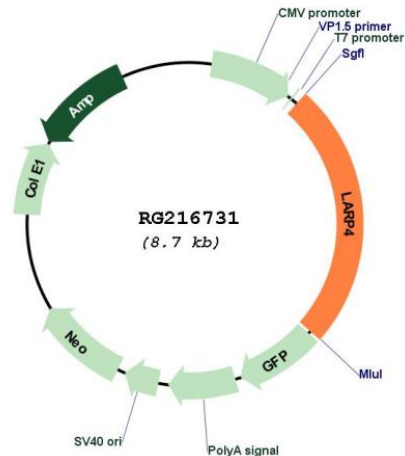
TRTRPLE - GFP Tag - V

Restriction Sites: SgfI-MluI

Cloning Scheme:

Cloning sites used for ORF Shutting:



**Plasmid Map:**


**ACCN:** NM\_052879

**ORF Size:** 2172 bp

**OTI Disclaimer:** The molecular sequence of this clone aligns with the gene accession number as a point of reference only. However, individual transcript sequences of the same gene can differ through naturally occurring variations (e.g. polymorphisms), each with its own valid existence. This clone is substantially in agreement with the reference, but a complete review of all prevailing variants is recommended prior to use. [More info](#)

**OTI Annotation:** This clone was engineered to express the complete ORF with an expression tag. Expression varies depending on the nature of the gene.

**Components:** The ORF clone is ion-exchange column purified and shipped in a 2D barcoded Matrix tube containing 10ug of transfection-ready, dried plasmid DNA (reconstitute with 100 ul of water).

**Reconstitution Method:**

1. Centrifuge at 5,000xg for 5min.
2. Carefully open the tube and add 100ul of sterile water to dissolve the DNA.
3. Close the tube and incubate for 10 minutes at room temperature.
4. Briefly vortex the tube and then do a quick spin (less than 5000xg) to concentrate the liquid at the bottom.
5. Store the suspended plasmid at -20°C. The DNA is stable for at least one year from date of shipping when stored at -20°C.

**RefSeq:** [NM\\_052879.5](#)

**RefSeq Size:** 6537 bp

**RefSeq ORF:** 2175 bp

**Locus ID:** 113251

**UniProt ID:** [Q71RC2](#)

**Cytogenetics:** 12q13.12

**Protein Families:** Transcription Factors

**Gene Summary:** RNA binding protein that binds to the poly-A tract of mRNA molecules (PubMed:21098120). Associates with the 40S ribosomal subunit and with polysomes (PubMed:21098120). Plays a role in the regulation of mRNA translation (PubMed:21098120). Plays a role in the regulation of cell morphology and cytoskeletal organization (PubMed:21834987, PubMed:27615744). [UniProtKB/Swiss-Prot Function]