

Product datasheet for **RG216729**

MMP16 (NM_022564) Human Tagged ORF Clone

Product data:

Product Type:	Expression Plasmids
Product Name:	MMP16 (NM_022564) Human Tagged ORF Clone
Tag:	TurboGFP
Symbol:	MMP16
Synonyms:	C8orf57; DKFZp761D112; MMP-X2; MT-MMP2; MT-MMP3; MT3-MMP
Mammalian Cell Selection:	Neomycin
Vector:	pCMV6-AC-GFP (PS100010)
E. coli Selection:	Ampicillin (100 ug/mL)



[View online »](#)

ORF Nucleotide Sequence:

>RG216729 representing NM_022564
 Red=Cloning site Blue=ORF Green=Tags(s)

TTTTGTAATACGACTCACTATAGGGCGGCCGGGAATTCGTCGACTGGATCCGGTACCGAGGAGATCTGCC
 GCC**CGCATCGCC**

ATGATCTTACTCACATTCAGCACTGGAAGACGGTTGGATTTCTGCATCATTCCGGGGTGTTTTTCTTGC
 AACCTTGCTTTGGATTTATGTGCTACAGTCTCGCGAACGGAGCAGTATTTCAATGTGGAGGTTGGTT
 ACAAAAGTACGGCTACCTTCCACCGACTGACCCAGAATGTCAGTCTGCGCTCTGCAGAGACCATGCAG
 TCTGCCCTAGCTGCCATGCAGCAGTTCTATGGCATTAAACATGACAGGAAAAGTGGACAGAAAACAATTG
 ACTGGATGAAGAAGCCCCGATGCGGTGTACCTGACCAGACAAGAGGTAGCTCCAAATTTCAATTCGTCG
 AAAGCGATATGCATTGACAGGACAGAAATGGCAGCACAAGCACATCACTTACAGTATAAAGAACGTAAC
 CCAAAAGTAGGAGACCCTGAGACTCGTAAAGCTATTCGCCGTGCCTTTGATGTGTGGCAGAATGAACTC
 CTCTGACATTTGAAGAAGTTCCCTACAGTGAATTAGAAAATGGCAAACGTGATGTGGATATAACCATTAT
 TTTTGCATCTGGTTTCCATGGGGACAGCTCTCCCTTTGATGGAGAGGGAGGATTTTGGCACATGCCTAC
 TTCCCTGGACCAGGAATTGGAGGAGATACCCATTTGACTCAGATGAGCCATGGACACTAGGAAATCCTA
 ATCATGATGGAATGACTTATTTCTTGTAGCAGTCCATGAACTGGGACATGCTCTGGGATTGGAGCATT
 CAATGACCCCACTGCCATCATGGCTCCATTTACCAGTACATGGAACAGACAACCTCAAACCTACCTAAT
 GATGATTTACAGGGCATCCAGAAGATATGGTCCACCTGACAAGATTCTCCACCTACAAGACCTCTAC
 CGACAGTGCCCCACACCGCTCTATTCTCCGGCTGACCAAGGAAAAATGACAGGCCAAAACTCCTCG
 GCCTCAAACCGGCAGACCCTCTATCCCGGAGCCAAACCAACATCTGTGATGGGAACTTAACTCTA
 GCTATTTCTCGTCGTGAGATGTTGTTTTCAAGGACCAGTGGTTTTGGCGAGTGAGAAACAACAGGGTGA
 TGGATGGATACCCAATGCAAATTACTTACTTCTGGCGGGGCTTGCCTCCTAGTATCGATGCAGTTTATGA
 AAATAGCGACGGGAATTTGTGTTCTTTAAAGTGAAGGGAGACACTCTATCTGTAATCCAAGATGGTTGG
 CTCTACAATAACATTGGAATGGATTCTAGAACAAGGACAGTCACTGCCTGTGCTCTCAAGACAACTG
 AAAAGCACAAGACCTATGAAGAATTATCTCCATCACATAC

ACCGGTACGCGGCCGCTCGAG - GFP Tag - GTTTAA

Protein Sequence:

>RG216729 representing NM_022564
 Red=Cloning site Green=Tags(s)

MILLTFSTGRRLDFVHHSVFFLQTLWILCATVCGTEQYFNVEVWLQKYGYLPPTDPRMSVLRSAETMQ
 SALAAMQQFYGINMTGKVDNRNTIDWMKKPRCGVPDQTRGSSKFHIRRKRYALTGQKWQHKHITYSIKNVT
 PKVGDPETRKAIIRRAFDVWQNVPLTFEEVPYSELENGKRVDITIIIFASGFHGDSSPFDGEGFLAHAY
 FPGPGIGDTHFDSDEPWTLGPNHNDGNDLFLVAVHELGHALGLEHSDPTAIMAPFYQYMETDNFKLPN
 DDLQGIQKIYGPDPKIPPPTRPLTPVPPHRSIPPADPRKNDPRKPPRPPTGRPSYPGAKPNICDGNFNTL
 AILRREMFVFKDQFWVRNRNRVMDGYPMQITYFWRGLPPSIDAVYENSNGNFVFKVKGDTLSVIQDQW
 LKYHWWILEQRQSVPLSRQTEKHKTYEELSSITY

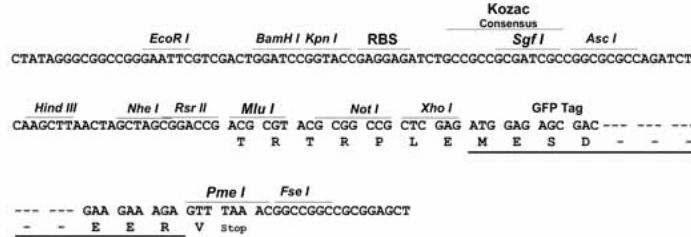
TRTRPLE - GFP Tag - V

Restriction Sites:

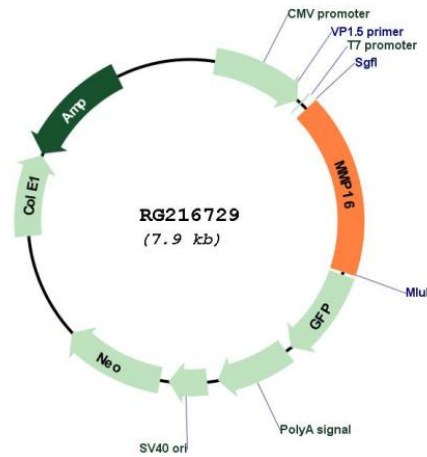
SgfI-MluI

Cloning Scheme:

Cloning sites used for ORF Shutting:



Plasmid Map:



ACCN: NM_022564

ORF Size: 1371 bp

OTI Disclaimer:	<p>Due to the inherent nature of this plasmid, standard methods to replicate additional amounts of DNA in E. coli are highly likely to result in mutations and/or rearrangements. Therefore, OriGene does not guarantee the capability to replicate this plasmid DNA. Additional amounts of DNA can be purchased from OriGene with batch-specific, full-sequence verification at a reduced cost. Please contact our customer care team at custsupport@origene.com or by calling 301.340.3188 option 3 for pricing and delivery.</p> <p>The molecular sequence of this clone aligns with the gene accession number as a point of reference only. However, individual transcript sequences of the same gene can differ through naturally occurring variations (e.g. polymorphisms), each with its own valid existence. This clone is substantially in agreement with the reference, but a complete review of all prevailing variants is recommended prior to use. More info</p>
OTI Annotation:	<p>This clone was engineered to express the complete ORF with an expression tag. Expression varies depending on the nature of the gene.</p>
Components:	<p>The ORF clone is ion-exchange column purified and shipped in a 2D barcoded Matrix tube containing 10ug of transfection-ready, dried plasmid DNA (reconstitute with 100 ul of water).</p>
Reconstitution Method:	<ol style="list-style-type: none">1. Centrifuge at 5,000xg for 5min.2. Carefully open the tube and add 100ul of sterile water to dissolve the DNA.3. Close the tube and incubate for 10 minutes at room temperature.4. Briefly vortex the tube and then do a quick spin (less than 5000xg) to concentrate the liquid at the bottom.5. Store the suspended plasmid at -20°C. The DNA is stable for at least one year from date of shipping when stored at -20°C.
RefSeq:	NM_022564.2
RefSeq Size:	1644 bp
RefSeq ORF:	1373 bp
Locus ID:	4325
Cytogenetics:	8q21.3
Domains:	hemopexin, Peptidase_M10, ZnMc
Protein Families:	Druggable Genome, Protease, Secreted Protein, Transmembrane
Gene Summary:	<p>Proteins of the matrix metalloproteinase (MMP) family are involved in the breakdown of extracellular matrix in normal physiological processes, such as embryonic development, reproduction, and tissue remodeling, as well as in disease processes, such as arthritis and metastasis. Most MMP's are secreted as inactive proproteins which are activated when cleaved by extracellular proteinases. The encoded protein activates MMP2 by cleavage. This gene was once referred to as MT-MMP2, but was renamed as MT-MMP3 or MMP16. [provided by RefSeq, Oct 2010]</p>