

Product datasheet for **RG216720**

MYO1H (NM_001101421) Human Tagged ORF Clone

Product data:

Product Type:	Expression Plasmids
Product Name:	MYO1H (NM_001101421) Human Tagged ORF Clone
Tag:	TurboGFP
Symbol:	MYO1H
Mammalian Cell Selection:	Neomycin
Vector:	pCMV6-AC-GFP (PS100010)
E. coli Selection:	Ampicillin (100 ug/mL)
ORF Nucleotide Sequence:	>RG216720 representing NM_001101421 Red=Cloning site Blue=ORF Green=Tags(s)

TTTTGTAATACGACTCACTATAGGGCGGCCGGAATTCGTCGACTGGATCCGGTACCGAGGAGATCTGCC
GCC**CGATCGCC**

ATGGAAGGGGCGCTGACTGCCCGGACAAGGTCGGGGTTCAGGATTTTGTGCTATTGGACGCGTACACCA
GCGAATCTGCCTTTGTGCGACAACCTCCGCAAGCGTTTCAGCGAGAACCTCATATACACATATATTGGCAC
CCTCCTTGTGTCTGTGAATCCATACCAGGAGCTCGGAATCTACTGTGAGCCAGATGGAACCTTATCAA
GGGGTCAATTTCTTTGAACTGCCACCACATGTCTACGCTATAGCCGACAACGCTTACCGAATGATGTGTG
CTGAACTAAATAACCATTTATCCTCATTCTGGAGAGAGTGGGGCAGGGAAAACAGAGGCTCCAAGAA
AATTCTCGAGTATTTGCAAGTACCTGCCAATGACCCAGTCACTACAAATAGCCCGTGACAGACTGCTG
TTCTCCAACCCAGTGTGGAGGCTTTTGAAAATGCCAGAACGCTCCGGAATGACAACTCCAGCAGATTTG
GGAAAATACATGGATATACAATTTGATTTTCAGGGCATTCCCGTAGGTGGGCATATCATCAGTTACTTGAT
AGAGAAGTCCCGAGTTGTCTACCAAAACGAAGGCGAGCGGAATTTCCACATCTTCTACCAGCTGTGGCA
GGTGGCGAAGAGGAGCGCCTGTCTTACCTGGGACTCGAGCGAGACCCCGAGCTGTATAAACTCTCAC
AGGGTCATTGTGCCAAAGAGTCAATCATTAGTACAAGAATGACTGAAAACGCTTTCCAACGCCTTTTC
TGTCATTGATTTTACTGAAGCTGACCTCGAGAATCTCTTTGGAATTATTGCCAGTGTCTTACACCTGGG
AACATTGGTTTTGAAGAAGACGACCAAGGCTGTGCCACTATCCCAGACACCCATGAGATCAAGTGGATAG
CCAAGCTCCTGGGGTCCACCCATCAGTCTTCTGGAAGCTCTCACCCACAGAAAAATTGAAGCCAAAAC
TGAGGAGGTGATCTGCCGTTGACACTAGAACTCTCTGTCTACGCTAGAGATGCAATGGCAAAGGCTGTT
TATGGACGAACGTTTACTTGGCTGGTCAACAAAATCAATTCCTCCTTAGTTAACAAGGTTGGTCAACGCA
TTTTGGATCCCTTGTCTTGTCTCACGTGGAAAACGTAATTGGATTACTGGACATCTATGGGTTTGAAGT
CTTTGACAAGAATGGTTTTGAACAGTTCTGTATAAATTACTGCAATGAGAAAACCCAGCAACTGTTAATT
GAGAGGACTCTAAAAGCAGAACAGGCAGAATATGAAATGGAAGGCATAGAGTGGGAGCCAATTAATATT
TCAACAACAAGATCATCTGTGATTTGGTAGAAGAGACATAAAGGAATCATATCTATTCTGGATGAAGA
ATGCATTCGGCCTGGTCTGCTACAGACTTGAGTTTCTTGAGAAAATTGGAAGAGAAAAGTGGGCAAAACAT
GCACACTTCGAAACCCGTAAAGTGGCTGGTCCAAGGGCCGAAAAGAGGATTGGCTGGATGGAGTTCCGAC
TCCTCCACTATGCAGGAGAGTCACTACTGCACCAAGGGATTCTTGAAAAAACAATGATCTTCTTTA



[View online >](#)

CAGACATCTGAAAGAAGTCTGTGCAAGTCCAAGAACATTATCCTGAGGGAATGCTTCTGCTGGCCGAG
 TTAGAAAACCGGAGGAGGCCCAACAGTGGGGACTCAGTTTAAAAACAGTCTGAGCAGCCTTCTAGAAA
 CCCTCATCTCTAAGGAGCCCTCTACATCCGTTGCATCAAGCCCAACGACAGGAAAGAACCCAGCAAATT
 TGATGACTTCTCATAAGGCATCAGATCAAATACCTGGGGCTGATGGAGCACCTGCGGGTGAGACGGGT
 GGTTTTGCATACCGAAGGAAATACGAGCATTCTTGCAAAGGTACAAGTCCTTATGCCAGACACCTGGC
 CGCACTGGCACGGGCTCCAGCAGAGGGCGTGAACGGCTGATCAAGTACATCGGCTACAAACCCGAGGA
 ATACAAGTTAGGCAAAAACCAAAATATTCATTTCGTTTTCCCAGAACTCTGTTTGCTACCGAAGATGCCTTT
 GAATTTAGTAAACATCAACTAGTTGCAAGAATCCAAGCCACTTACAAACGCTGCCTAGGAAGGAGAGAAT
 ACGTGAAAAAAGACAAGCAGCCATCAAACCTGGAAGCCCACTGGCGTGGGGCCCTGGCTCGGAAGGCAAT
 CCAAAGGAGAAAGTGGGCCGTGCGGATTATCAGAAAGTTCATTAAGGATTATCAGTTCGCAACAAACCC
 CTCTGTCTGACAACGAGGAATTTATCGTGTGTTGCGGAAGAATTACATCTTGAATCTCCGGTATCACC
 TTCAAAGACTGTCTGGACAAGAGCTGGCTGAGGCTCCTGGCATCTTGAAAAATGCATCAGATCTGCT
 CAGGAAAATGTGCGTGAGGAACCTGGTGCAGAAGTACTGCCGCGGGATCACAGCTGAGCGGAAAGCAATG
 ATGACGAAAAGGTAGTTACAAGTAAAATCTTCAGGGGAAAGGAAAGACGGCTACACAGAAAGTTAAATC
 AACCCTTTGTCAACAGTCGGATAGATGAAGGAGACATAATCCGAAAGTCTTCAGTAATTAGCCATGA
 GAAAATCCAGTATGGTGTCCCGTCATTAATATGACAGAAAAGGCTTCAAAGCAGGCAGCGGCAACTC
 ATTCTTACTCAGAAAGCAGCTTACGTGGTGAACCTTGCCAAAATCAAGCAGAAAATAGAGTACTCAGCTC
 TCAAAGGTGTCTCCACTAGCAATCTGAGTGATGGAATCTTAGTCATTCATGTTTCACCAGAGGACAGCAA
 GCAAAAGGGGATGCCGTTTTGCAGTGTGGACAGTGTGTTGAAGCAGTTACTAACTCGTCATGCTGGTT
 AAGAAGGAGAACATTGTCAATGTTGTTCAAGGAAGTTACAGTTTTTTATTAGTCCGGGAAAAGAAGGCA
 CAATAGTTTTCGACACTGGACTGGAAGAACAAGTCTATAAAAAATAAAATGGACAATTACAGTGGTGTC
 AGTCCGGAGGAAGTCC

AGCGGACCGACGCGTACGCGGCCGCTCGAG - GFP Tag - GTTTAA

Protein Sequence:

>RG216720 representing NM_001101421
 Red=Cloning site Green=Tags(s)

MEGAL TARDKVGVDVFLLDAYTSESAFVDNLRKRFSENLIYTYIGTLLVSVNPYQELGIYTVSQMELYQ
 GVNFFELPPHYA IADNAYRMMCAELNNHFILISGESGAGKTEASKKILEYFAVTCPMTQSLQIARDRL
 FSNPVLEAFGNARTLRNDNSRFGKYMDIQDFQGI PVGGHII SYLIEKSRVYQNEGERNFHIFYQLLA
 GGEEERLSYLG LERDPQLYKYL SQGHCAKESSI SDKNDWKTVSNAF SVIDFTEADLENLFGIIASVHLHG
 NIGFEEDDQGCATIPD THEIKWIAKLLGVHPSVLLLEAL THRKIEAKTEEVICPLTLELSVYARDAMAKAV
 YGRTFTWLVNKINSSLV NKVQRI LDPLLLL TWKTVIGLLDIYGFVFDKNGFEQFCINYCNEKLQQLLI
 ERTLKAEQAEYEMEGIEWEPIKYFNKII CDLVEERHKGI ISILDEECIRPGPATDLSFLEKLEEKVGH
 AHFETRKL A GPKGRKRIGWMEFRLLHYAGEVTYCTKGFLEKNNDLLYRHLKEVLCKSKNIILRECFLLAE
 LENRRRPPTVGTQFKNSL S LLET LISKEPSYIRC IKPNDRKEPSKFDDFLIRHQIKYLGMEHLRVRR
 GFAYRRKYEHFLQRYKSLCPDTWPHWHGPPAEGVERLIKYIGYKPEEYKLGKTKIFIRFPRTLFATEDAF
 EFSKHQLVARIQATYKRCLGRREYVKKRQAAIKLEAHWRGALARKAIQRRKWAVRIIRKFIKGFISRNP
 LCPDNEEFIVFVRKNYILNRYHLPKTVL DKS WLRPPGILENASDLLRKMVVRNLVQKYCRGITAEKAM
 MQQKVVTSEIFRGRKDGYESLNQPFVNSRIDEGDINPKVLQLISHEKIYGVVPIKYDRKGFKARQRL
 ILTQKAAVVELAKIKQKIEYSALKGVSTSNLSDGILVIHVSPEDSKQKGDVAVLQCGHVFEAVTKLVMLV
 KKENIVNVVQGS LQFFISPGKEGTIVFD TGLEEQVYKKNKNGQLTVVSVRRKS

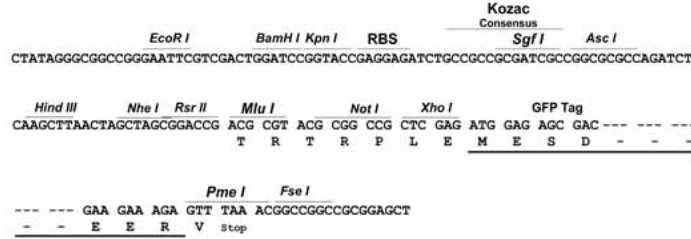
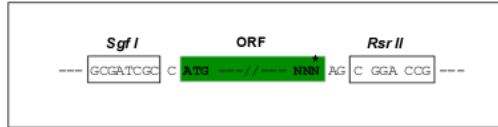
SGPTRRRLE - GFP Tag - V

Restriction Sites:

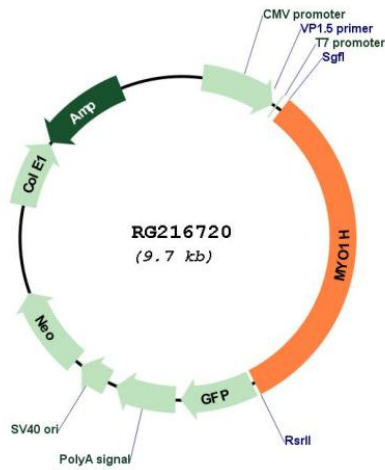
Sgfl-RsrII

Cloning Scheme:

Cloning sites used for ORF Shuttling:



Plasmid Map:



ACCN: NM_001101421

ORF Size: 3096 bp

OTI Disclaimer:	The molecular sequence of this clone aligns with the gene accession number as a point of reference only. However, individual transcript sequences of the same gene can differ through naturally occurring variations (e.g. polymorphisms), each with its own valid existence. This clone is substantially in agreement with the reference, but a complete review of all prevailing variants is recommended prior to use. More info
OTI Annotation:	This clone was engineered to express the complete ORF with an expression tag. Expression varies depending on the nature of the gene.
Components:	The ORF clone is ion-exchange column purified and shipped in a 2D barcoded Matrix tube containing 10ug of transfection-ready, dried plasmid DNA (reconstitute with 100 ul of water).
Reconstitution Method:	<ol style="list-style-type: none"> 1. Centrifuge at 5,000xg for 5min. 2. Carefully open the tube and add 100ul of sterile water to dissolve the DNA. 3. Close the tube and incubate for 10 minutes at room temperature. 4. Briefly vortex the tube and then do a quick spin (less than 5000xg) to concentrate the liquid at the bottom. 5. Store the suspended plasmid at -20°C. The DNA is stable for at least one year from date of shipping when stored at -20°C.
RefSeq:	NM_001101421.2 , NP_001094891.2
RefSeq Size:	3807 bp
RefSeq ORF:	3069 bp
Locus ID:	283446
Cytogenetics:	12q24.11