

Product datasheet for **RG216693**

CD98 (SLC3A2) (NM_001012664) Human Tagged ORF Clone

Product data:

| | |
|---------------------------|---|
| Product Type: | Expression Plasmids |
| Product Name: | CD98 (SLC3A2) (NM_001012664) Human Tagged ORF Clone |
| Tag: | TurboGFP |
| Symbol: | CD98 |
| Synonyms: | 4F2; 4F2HC; 4T2HC; CD98; CD98HC; MDU1; NACAE |
| Mammalian Cell Selection: | Neomycin |
| Vector: | pCMV6-AC-GFP (PS100010) |
| E. coli Selection: | Ampicillin (100 ug/mL) |



[View online »](#)

ORF Nucleotide Sequence:

>RG216693 representing NM_001012664
 Red=Cloning site Blue=ORF Green=Tags(s)

TTTTGTAATACGACTCACTATAGGGCGGCCGGGAATTCGTCGACTGGATCCGGTACCGAGGAGATCTGCC
 GCC**GCGATCGCC**

ATGGAGCTACAGCCTCCTGAAGCCTCGATCGCCGTCGTGTCGATTCCGCGCCAGTTGCCTGGCTCACATT
 CGGAGGCTGGTGTCCAGGTCTCAGCGCGGGGACGACTCAGGCACCATGAGCCAGGACACCGAGGTGGA
 TATGAAGGAGGTGGAGCTGAATGAGTTAGAGCCCGAGAAGCAGCCGATGAACGCGCGTCTGGGGCGCC
 ATGTCCCTGGCGGGAGCCGAGAAGAATGGTCTGGTGAAGATCAAGGTGGCGGAAGACGAGCGGAGGCGG
 CAGCCCGGCTAAGTTCACGGCCCTGTCCAAGGAGGAGCTGCTGAAGGTGGCAGGACGCCCGGCTGGGT
 ACGCACCCGCTGGGCACTGCTGCTGCTTCTGGCTCGGCTGGCTCGGCATGCTTGTGCTGCCGTGGTC
 ATAATCGTGCAGCGCCGCTTGTGCGGAGCTACCGCGCAGAAGTGGTGGCACACGGGCGCCCTTACC
 GCATCGGCGACCTTCAGGCCCTCAGGGCCACGGCGGGCAACCTGGCGGGTCTGAAGGGGCGTCTCGA
 TTACCTGAGCTCTCTGAAGGTGAAGGGCCTTGTGCTGGTCCAATTCACAAGAACCAGAAGGATGATGTC
 GCTCAGACTGACTTGCTGCAGATCGACCCCAATTTGGCTCCAAGGAAGATTTTACAGTCTCTTGAAT
 CGGCTAAAAAAGAGCATCCGTGTCATTCTGGACCTTACTCCAACTACCGGGGTGAGAAGTCTGGTT
 CTCCACTCAGGTTGACTGTGGCCACCAAGGTGAAGGATGCTCTGGAGTTTGGCTGCAAGTGGCGTG
 GATGGTTCCAGGTTCCGGACATAGAGAATCTGAAGGATGCATCCTCATTCTTGGCTGAGTGGCAAAATA
 TCACCAAGGGCTTCAGTGAAGACAGGCTTGTGATTGCGGGGACTAACTCCTCCGACCTTCAGCAGATCCT
 GAGCCTACTCGAATCCAACAAAGACTTGTGTTGACTAGCTCATACCTGTCTGATTCTGGTTCTACTGGG
 GAGCATAAAAAATCCCTAGTCACACAGTATTTGAATGCCACTGGCAATCGCTGGTGCAGCTGGAGTTTGT
 CTCAGCAAGGCTCCTGACTTCTTCTGCGGCTCAACTTCTCGACTCTACCAGCTGATGCTCTTAC
 CCTGCCAGGGACCCCTGTTTTTCAGCTACGGGGATGAGATTGGCCTGGATGCAGTGCCTTCTCGACAG
 CCTATGGAGGCTCCAGTCATGCTGTGGGATGAGTCCAGCTTCCCTGACATCCCAGGGGCTGTAAGTGCCA
 ACATGACTGTGAAGGGCCAGAGTGAAGACCCTGGCTCCCTCCTTTCTTGTTCGGCGGCTGAGTGACCA
 GCGGAGTAAGGAGCGCTCCCTACTGCATGGGGACTTCCACGCTTCTCCGCTGGGCTGGACTCTTCTCC
 TATATCCGCCACTGGGACCAGAATGAGCGTTTTCTGGTAGTGCTTAACCTTGGGGATGTGGGCTCTCGG
 CTGGACTGCAGGCTCCGACCTGCCTGCCAGCGCCAGCCTGCCAGCAAGGCTGACCTCTGCTCAGCAC
 CCAGCCAGGCGGTGAGGAGGGCTCCCTCTTGAAGTGAAGCGCTGAAACTGGAGCTCACGAAGGGCTG
 CTGCTCCGCTTCCCTACGCGCC

AG**CGGACCG**ACGCGTACGCGGCCGCTCGAG - GFP Tag - GTTTAA

Protein Sequence:

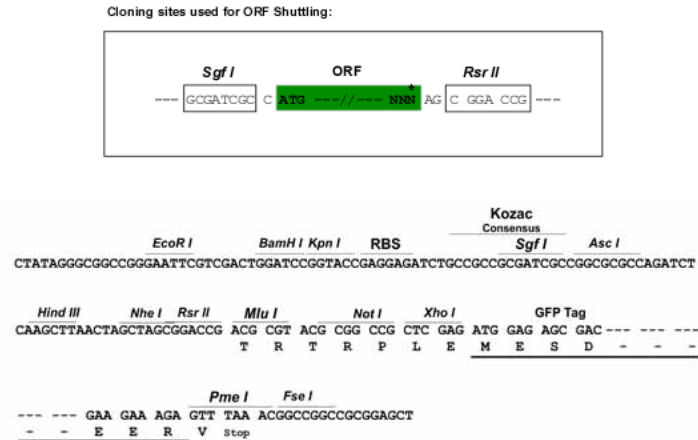
>RG216693 representing NM_001012664
 Red=Cloning site Green=Tags(s)

MELQPPEASIAVVSIPRQLPGSHSEAGVQGLSAGDSDGMSQDTEVDMKEVELNELEPEKQPMNAASGAA
 MSLAGAENGLVKIKVAEDEAEAAAAAKFTGLSKEELLKVAGSPGWVTRWALLLLFWLWLGMLAGAVV
 IIVRAPRCRELPQKWWHTGALYRIGDLQAFQGHGAGNLAGLKGRLDYLSLKVKGLVLPPIHKNQKDDV
 AQTDLQIDPNFGSKEDFDLLQSAKKKSIRVILDLPNYRGENSWFSTQVDTVATKVKDALEFWLQAGV
 DGFQVRDIENLKDASSFLAEWQNIKGFSEDRLLIAGTNSDLQQILSLESNKDLLLLSSYLSDSGSTG
 EHTKSLVTQYLNATGNRWCSWSLSQARLLTSFLPAQLRLYLQMLFTLPGTPVFSYGDEIGLDAALPGQ
 PMEAPVMLWDESSFPDIPGAVSANMTVKGQSEDPGSLLSLFRRLSDQRSKERSLLHGDFHAFSAGPGLFS
 YIRHWDQNERFLVVLNFGDVGLSAGLQASDLPASASLPKADLLLLSTQPGREESPLELERLKLEPHEGL
 LLRFPYAA

SGP**TRRRLE** - GFP Tag - V

Restriction Sites:

SgfI-RsrII

Cloning Scheme:


ACCN: NM_001012664

ORF Size: 1704 bp

OTI Disclaimer: The molecular sequence of this clone aligns with the gene accession number as a point of reference only. However, individual transcript sequences of the same gene can differ through naturally occurring variations (e.g. polymorphisms), each with its own valid existence. This clone is substantially in agreement with the reference, but a complete review of all prevailing variants is recommended prior to use. [More info](#)

OTI Annotation: This clone was engineered to express the complete ORF with an expression tag. Expression varies depending on the nature of the gene.

Components: The ORF clone is ion-exchange column purified and shipped in a 2D barcoded Matrix tube containing 10ug of transfection-ready, dried plasmid DNA (reconstitute with 100 ul of water).

Reconstitution Method:

1. Centrifuge at 5,000xg for 5min.
2. Carefully open the tube and add 100ul of sterile water to dissolve the DNA.
3. Close the tube and incubate for 10 minutes at room temperature.
4. Briefly vortex the tube and then do a quick spin (less than 5000xg) to concentrate the liquid at the bottom.
5. Store the suspended plasmid at -20°C. The DNA is stable for at least one year from date of shipping when stored at -20°C.

RefSeq: [NM_001012664.3](#)

RefSeq Size: 2129 bp

RefSeq ORF: 1707 bp

Locus ID: 6520

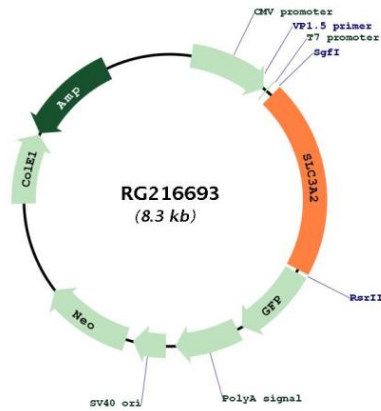
UniProt ID: [P08195](#)

Cytogenetics: 11q12.3

Protein Families: Transmembrane

Gene Summary: This gene is a member of the solute carrier family and encodes a cell surface, transmembrane protein. The protein exists as the heavy chain of a heterodimer, covalently bound through di-sulfide bonds to one of several possible light chains. The encoded transporter plays a role in regulation of intracellular calcium levels and transports L-type amino acids. Alternatively spliced transcript variants, encoding different isoforms, have been characterized. [provided by RefSeq, Nov 2010]

Product images:



Circular map for RG216693