

Product datasheet for **RG216685**

GPR119 (NM_178471) Human Tagged ORF Clone

Product data:

Product Type:	Expression Plasmids
Product Name:	GPR119 (NM_178471) Human Tagged ORF Clone
Tag:	TurboGFP
Symbol:	GPR119
Synonyms:	GPCR2
Mammalian Cell Selection:	Neomycin
Vector:	pCMV6-AC-GFP (PS100010)
E. coli Selection:	Ampicillin (100 ug/mL)
ORF Nucleotide Sequence:	>RG216685 representing NM_178471 Red=Cloning site Blue=ORF Green=Tags(s)

TTTTGTAATACGACTCACTATAGGGCGGCCGGAATTCGTCGACTGGATCCGGTACCGAGGAGATCTGCC
GCC**CGATCGCC**

ATGGAATCATCTTTCTCATTGGAGTGATCCTTGCTGCTCCTGGCCTCCCTCATCATTGCTACTAACACAC
TAGTGGCTGTGGCTGTGCTGCTGTTGATCCACAAGAATGATGGTGTGAGTCTCTGCTTACCTTGAATCT
GGCTGTGGCTGACACCTTGATTGGTGTGGCCATCTCTGGCCTACTCACAGACCAGCTCTCCAGCCCTTCT
CGGCCACACAGAAGACCCTGTGCAGCCTGCGGATGGCATTGTCACTTCTCCGCAGCTGCCTCTGTCC
TCACGGTCATGCTGATCACCTTTGACAGGTACCTTGCCATCAAGCAGCCCTCCGCTACTGAAGATCAT
GAGTGGGTTCTGTGGCCGGGCTGCATTGCCGGCTGTGGTTAGTGTCTTACCTCATTGGCTTCTCCCA
CTCGGAATCCCCATGTTCCAGCAGACTGCCTACAAAGGGCAGTGCAGCTTCTTTGCTGTATTTACCCCTC
ACTTCGTGCTGACCTCTCCTGCGTTGGCTTCTCCAGCCATGCTCCTTTGTCTTCTTACTGCGA
CATGCTCAAGATTGCCTCCATGCACAGCCAGCAGATTGAAAGATGGAACATGCAGGAGCCATGGCTGGA
GGTTATCGATCCCACGGACTCCCAGGACTTCAAAGCTCCTGACTGTGTCTGTTCTCATTGGGAGCT
TTGCTCTATCCTGGACCCCTTCTTATCACTGGCATTGTGCAGGTGGCTGCCAGGAGTGCACCTCTA
CCTAGTGTGGAACGGTACCTGTGGCTGCTCGGCGTGGCAACTCCCTGCTCAACCCACTCATCTATGCC
TATTGGCAGAAGGAGGTGCGACTGCAGCTTACCACATGGCCCTAGGAGTGAAGAAGGTGCTCACCTCAT
TCCTCCTTTTCTCTCGCCAGGAATTGTGGCCAGAGAGGCCAGGAAAGTTCTGTCCATCGTCCAC
TATCTCCAGCTCAGAGTTTGATGGC

ACGCGTACGCGGCCGCTCGAG - GFP Tag - GTTTAA



[View online »](#)

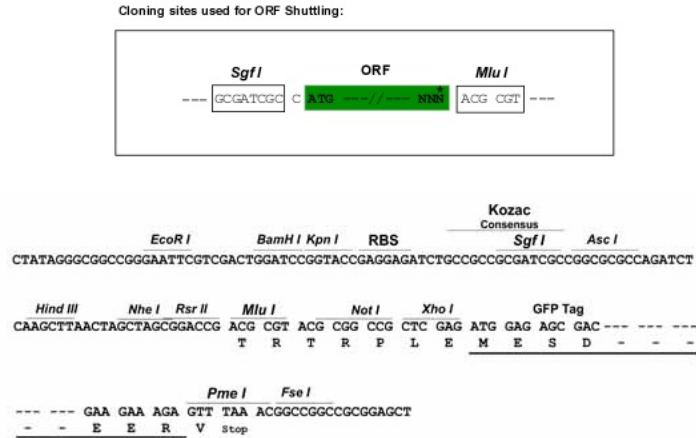
Protein Sequence: >RG216685 representing NM_178471
Red=Cloning site Green=Tags(s)

MESSFSFGVILAVLASLIATNTLVAVAVLLLIIHKNDGVSLCFTLNLA VADTLIGVAISGLLTDQLSSPS
 RPTQKTLCSLRMAFVTSSAAASVLTVMLITFDRYLAIKQPFYRLKIMSGFVAGACIAGLWLVSYLIGFLP
 LGIPMFQQTAYKGQCSFFAVFHPHFVLTLCVGFPPAMLLFVFFYCDMLKIASMHSQQIRKMEHAGAMAG
 GYRSPRTPSDFKALRTVSVLIGSFALSWTPFLITGIVQVACQECHLYLVLERYLWLLGVGNSSLNPLIYA
 YWQKEVRLQLYHMLGVKKVLTSLFLLLSARNCGPERPRESSCHIVTISSEFDG

TRTRPLE - GFP Tag - V

Restriction Sites: SgfI-MluI

Cloning Scheme:



ACCN: NM_178471

ORF Size: 1005 bp

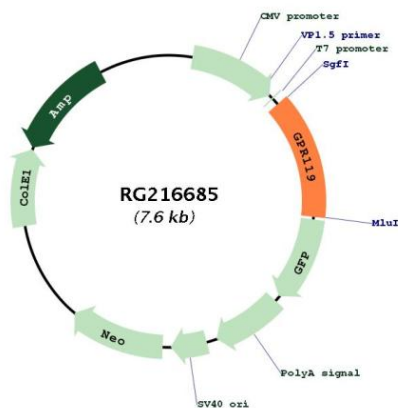
OTI Disclaimer: The molecular sequence of this clone aligns with the gene accession number as a point of reference only. However, individual transcript sequences of the same gene can differ through naturally occurring variations (e.g. polymorphisms), each with its own valid existence. This clone is substantially in agreement with the reference, but a complete review of all prevailing variants is recommended prior to use. [More info](#)

OTI Annotation: This clone was engineered to express the complete ORF with an expression tag. Expression varies depending on the nature of the gene.

Components: The ORF clone is ion-exchange column purified and shipped in a 2D barcoded Matrix tube containing 10ug of transfection-ready, dried plasmid DNA (reconstitute with 100 ul of water).

Reconstitution Method:	<ol style="list-style-type: none">1. Centrifuge at 5,000xg for 5min.2. Carefully open the tube and add 100ul of sterile water to dissolve the DNA.3. Close the tube and incubate for 10 minutes at room temperature.4. Briefly vortex the tube and then do a quick spin (less than 5000xg) to concentrate the liquid at the bottom.5. Store the suspended plasmid at -20°C. The DNA is stable for at least one year from date of shipping when stored at -20°C.
RefSeq:	NM_178471.2
RefSeq Size:	1008 bp
RefSeq ORF:	1008 bp
Locus ID:	139760
UniProt ID:	Q8TDV5
Cytogenetics:	Xq26.1
Protein Families:	Druggable Genome, GPCR, Transmembrane
Gene Summary:	This gene encodes a member of the rhodopsin subfamily of G-protein-coupled receptors that is expressed in the pancreas and gastrointestinal tract. The encoded protein is activated by lipid amides including lysophosphatidylcholine and oleoylethanolamide and may be involved in glucose homeostasis. This protein is a potential drug target in the treatment of type 2 diabetes.[provided by RefSeq, Jan 2010]

Product images:



Circular map for RG216685