

## Product datasheet for **RG216677**

### DIP2A (NM\_015151) Human Tagged ORF Clone

#### Product data:

Product Type:	Expression Plasmids
Product Name:	DIP2A (NM_015151) Human Tagged ORF Clone
Tag:	TurboGFP
Symbol:	DIP2A
Synonyms:	C21orf106; DIP2
Mammalian Cell Selection:	Neomycin
Vector:	pCMV6-AC-GFP (PS100010)
E. coli Selection:	Ampicillin (100 ug/mL)
ORF Nucleotide Sequence:	>RG216677 representing NM_015151 Red=Cloning site Blue=ORF Green=Tags(s)

TTTTGTAATACGACTCACTATAGGGCGGCCGGAATTCGTCGACTGGATCCGGTACCGAGGAGATCTGCC  
GCC**CGATCGCC**

ATGGCTGACCGCGGGTGCCCGCTGGAGGCGGCCCGCTGCCTGCCGAGGTGCGGGAGAGCCTGGCTGAGC  
TGGAGCTGGAGCTGTCCGAAGGTGACATCACTCAAAAAGGATATGAAAAGAAAAGGGCAAAGCTGCTTGC  
ACGTTATATACCGCTTATTCAAGGAATAGACCCATCTCTGCAAGCAGAGAATAGAATTCCTGGGCCCTCA  
CAAACCACGGCCGCTGCACCCAAGCAGCAGAAGTCTCGGCCACCGCCTCGAGGGATGAGCGCTTCCGGT  
CAGATGTCCACACTGAAGCCGTGCAAGCAGCTTTGGCCAAATACAAAGAGAGGAAGATGCCTATGCCTTC  
GAAGAGACGTTCTGTCTTGTGCATTCTGTGGAAACCTACACCCCTCCAGACACGTCGTCCTGCCTCA  
GAAGATGAGGGCTCTTTACGGCGACCCGGCGACTCACCTCCACTCCGCTCCAGAGCCATTCACGCGTCG  
AGCCCTGGCTCGACCGGGTCATTAGGGCTCGTCCACCTCATCCTCTGCATCCTCCACCTCATCTCACCC  
GGGAGGGAGACCCACCACTGCTCCAGTGTGCAGCCACGCCGGGGGCCCGCTACCACTGCACTCGCA  
GGCCTCGAGGCCACACCCACATAGATCTGCATTCTGCCCTCCTGATGTACCACGGCCCTCGTGGAGC  
ATTCGTAATTTGAGCGTCCACAGGTGGCTTCTGTGAGAAGTGTTCCTCGGGGTGCAGCGGGAGCATGCT  
GGAACAGCAGATGGTGTCCCTGTGAACAGCAGAGTGTCTCCAAATCCAGCAGCTTCTGAACACCCCTG  
AAGAGGCCAAAGCGCCCTCCACTGAAGGAGTCTTTGTGGATGATTTTGAGGAATTTGGAAGTTCAGC  
AACCAGATCCAAATCAGCCAAAGCTGAGGGAAGCGAGACGAGTGTCTGAGAGGGGAGCCTCTCACTGC  
AGGTGTCCCCCGACCGCGTCTGTGTTGGCCACCTTGACGCGTGGGGCACAACAGCCAAATCCCCC  
TGTCTGACTGCCTGGATACTGGAAGGCCGCTACACTCTCACCTATGGTAACTTTGGAGTCGGA  
GTTTAAACTAGCTTATACTCTACTTAATAAACTGACAAGTAAGAATGAACCTCTACTTAACTGGAGA  
CAGAGTGGCGCTCGTGTTCGAATAGTGACCCTGTGATGTTTATGGTTCATTTATGGGTGTCTCCTG  
GCAGAGCTGGTTCCTGTCCCATAGAAGTGCCATTAACAAGAAAGGATGCAGGCACCGCAGGTTGGGT  
TTCTGCTGGCAGCTGTGGAGTCTTCTTGCCCTGACCACAGACGCTTGTGAGAAAGCCCTCCCAAGGC  
ACAGACAGGAGAGGTGGCAGCTTCAAAGTTGGCCCCGCTCTCTGGCTAGTGATTGATGGGAAGCAT



[View online »](#)

CTAGCCAAGCCCCAAAGGACTGGCACCCTCTGGCCCAGGACACAGGGACTGGGACTGCCTACATTGAGT  
 ATAAAACCAGCAAAGAAGGCAGTACGGTGGGGGTACAGTGTCCCACGCATCCCTGCTGGCACAGTGCCG  
 GGCTCTGACCCAGGCGTGCGGTACTCAGAAGCTGAAACATTAACAAACGTGCTGGATTTCAAAGGGAT  
 GCTGGTCTGTGGCATGGCGTGTAAACAAGCGTCATGAACAGGATGCACGTGGTCAGCGTCCCCTACGCGC  
 TGATGAAGGCGAACCCACTCTCCTGGATCCAGAAAGTGTCTTCTATAAAGCTCGGGCCGCGTGGTGAA  
 GTCCGCGAGACATGCACTGGTCTCTCCTAGCTCAGCGGGCCAGAGGGACGTCAGCCTCAGTCACTGCCG  
 ATGCTGATTGTGGCCGATGGTGCCAACCGTGGTTCGATCTCCTCTGTGACGCCTCTCCTCAACGCTTCC  
 AGTCCAGAGGTCTGAGGCCAGAGGTCTCTGTCTTGTGCAAGTTCTCCTGAGGCCGCTGACTGTCCGCAT  
 CCGCAGGCCACCTGATCTGGGAGGACCCTCCAAGAAAAGCAGTCTGTGATGAACGGTCTAAGTTAT  
 GGTGTTATCAGAGTGGATACTGAAGAAAAGTTGTGAGTCTTACTGTTTACAGGACGTTGGTCAGGTGATGC  
 CTGGAGCTAATGTATGTGTTGTGAAGTTAGAAGGTACCCCTTATCTTTGTAAGTGTGAAAGTGGGAGA  
 AATATGCGTCAGTTCAGTGCAACTGGCACAGCGTACTATGGATTGCTTGAATCACGAAGAATGTGTTT  
 GAGGCAGTTCGGTCACACAGGAGGAGCACCCATCTTTGACAGGCCATTACCAGGACAGGCGCTGCTGG  
 GCTTCATCGGGCCTGACAACCTGGTCTTCATCGTGGGCAACTGGACGGGCTGATGGTCACTGGAGTTCCG  
 CAGACACAATGCAGATGACGTTGTGGCCACCGCACTGGCCGTGGAGCCATGAAGTTTGTCTACAGAGGC  
 AGGATCGCTGTGTTCTCTGTGACCGTGTGCACGACGACCGGATTGTCTGGTGGCTGAGCAGCGGCCGG  
 ATGCCTCGGAGGAGGACAGCTTCCAGTGGATGAGCCGTGTGCTGCAGGCCATTGATAGCATCCACCAGGT  
 GGGCGTGTACTGTCTGGCCCTGGTTCTGCCAACACCTTGCCCAAGGCTCCTCTCGGAGGGATTACATT  
 TCTGAAACCAAACAGCGCTTTCTGGAAGGGACGCTGCACCCGTGTAATGTGCTGATGTGCCCTCACACCT  
 GTGTTACCAACCTCCCCAACCTCGTCAGAAACAACCAGAGGTTGGACCAGCCTCAATGATCGTGGGGAA  
 CCTGGTTGCTGGGAAGAGAATCGCTCAGGCTTCCGGGAGAGAGCTCGCCACCTGGAGGACAGCGACCAG  
 GCACGGAAGTTCTGTTCTGGCTGACGTGTGACGTGGCGTGGCCACCACTCCTGACCACCCGCTGT  
 TCTTGTGCTGAACGCCAAGGGCACCTCACAAGCACTGCAACCTGTGTCAGCTGCACAAAAGGCTGA  
 GAGATGGCCCGGCTCTGATGGAGAAGGGAAGACTGAGTGTGGGGACCATGTGGCTCTGGTCTACCCA  
 CCAGGGGTGGACCTCATTGCCGCTTCTATGGCTGCTTGTACTGTGGCTGCGTGCCTGTACCCGTGCGGC  
 CCCCACCCCTCAGAACCTCGGCACCACACTGCCACCGTCAAGATGATCGTGGAGGTGACGAAGTCTGC  
 ATGCGTCTCACCACGCAGGCTGTACACGGCTGCTCAGGTCCAAGGAGGCTGCTGCTGCCGTGGACATC  
 AGGACCTGGCCACCATCCTAGACACAGATGACATCCCAAAAAGAAGATAGCAAGCGTTTTTCAGGCCCC  
 CCTCCCCGATGCTCTCGCATACTTGGACTTCAAGCGTGTCAACCACTGGGATATTAGCGGGAGTGAAGAT  
 GTCGCACGCGGCCACAAGCGCTTATGCCGCTCCATAAAGCTGCAGTGTGAGCTGTACCCCTCGCGGCAG  
 ATCGCCATCTGCCTGCACCCCTACTGTGGCCTTGGTTTTGCCCTGTGGTGTCTGTGCAGTGTCTACTCGG  
 GACACCAATCAGTGTGGTGCCTCCGCTGGAGCTGGAGAGCAACGTGTCCCTGTGGCTGTGCGCCGTGAG  
 CAGTACAAGGCCCGCTCACCTTCTGCTCCTACTCTGTGATGGAGATGTGCACCAAGGGCTAGGGCGA  
 CAGACGGGTGTCCTCAGGATGAAGGGGGTGAACCTGTCATGTGTGCGCACGTGCATGGTGGTTCGCCGAGG  
 AGCGGCCCAGGATTGCGCTGACCCAGTCTTCTCCAAGCTCTTCAAGGACCTGGGCTGCCGGCCCGCGC  
 CGTAAGCACACGTTTCGGGTGCAGGGTCAACGTGGCCATCTGCCTCCAGGGCACAGCTGGCCCGGACCCC  
 ACAACCGTCTACGTGGACATGCGGGCACTGCGCCATGACAGGGTTCGTTTGGTGAACGGGGTCTCCGC  
 ACAGCTGCCATTGATGGAGTCTGAAAAGATCTCCCCGGCGTGAAGGTATCATCGCACACCCGAGAC  
 CAAAGGACCCTTGGGAGACTCACACCTGGGAGAGATCTGGTAAGCAGCCCCACAATGCCACCGGTAC  
 TACACCGTTTACGGGGAGGAGGCGCTTATGCCGACCACTTCAAGTGCCTGGCTGAGTTTTGGAGACACAC  
 AGACCATCTGGGCAAGGACCGGCTACCTTGGCTTCTTCCGGCAACAGAGCTCACTGATGCCAGTGGAGG  
 GCGGCACGATGCACTGTATGTGTTGGGTCTCTGGATGAAACTCTGGAGCTCAGAGGCATGCGGTACCAC  
 CCCATCGACATTGAGACCTCTGTATCCGAGCACACAGGAGCATCGTGTGAGTGTGCCGATTACCTGGA  
 CCAACCTGCTGGTGGTGGTGGTGGAGCTGGATGGGCTAGAGCAGGATGCCCTGGACCTGGTGGCCCTGGT  
 GACCAACGTGGTGTGGAGGAGCACTACCTGGTCTGGGAGTGGTGGTTCATCGTGGACCCAGGGGTGATC  
 CCTATCAACTCTCGGGTGAGAAGCAGCGCATGCACCTGCGGGACGGCTTCTGGCTGACCAGCTGGACC  
 CCATCTATGTCGCTACAACATG

ACGCGTACGCGGCCGCTCGAG – GFP Tag – GTTTAA

Protein Sequence: >RG216677 representing NM\_015151  
 Red=Cloning site Green=Tags(s)

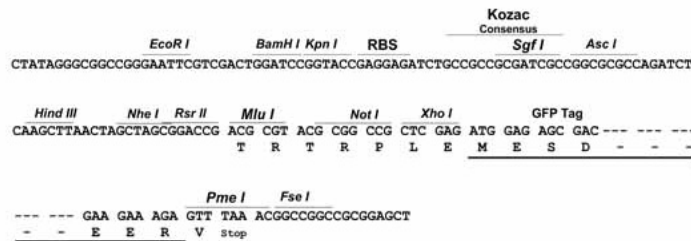
MADRGCPLEAAPLPAEVRESLAELELESEGDIITQKGYEKKRAKLLARYIPLIQGIDPSLQAEINRIPGPS  
 QTAAAPKQQKSRPTASRDERFRSDVHTEAVQAALAKYKERKMPMPKRRSVLVHSSVETYTPPDTSSAS  
 EDEGLRRPGRLTSTPLQSHSSVEPWLDRIQGSSTSSASSTSSHPGGRPTTAPSAATPGAAATTALA  
 GLEAHTHIDLHSAPPDVTTLGLVEHSYFERPQVASVRSVPRGCSGSMLETADGVPVNSRVSSKIQLLNTL  
 KRPKRPPLEKFFVDDFEELLELEVQDPNQPKPEGSETSVLRGEPLTAGVPRPSSLATLQRWGTTQPKSP  
 CLTALDTTGKAVYTLTYGKLWSRSLKLAYTLNLKLTSKNEPLLKPGDRVALVFPNSDPVMFMVAFYGCLL  
 AELVPVPIEVPLTRKDAGSQVGFLLGSCGVFLALTTDACQKGLPKAQTGEVAAFKGWPPLSWLVIDGKH  
 LAKPPKDWHLAQDTGTGTAYIEYKTSKEGSTVGVTVSHASLLAQCRALTQACGYSEAETLTNVLDFKRD  
 AGLWHGVLTSVMNRMHVSVPYALMKANPLSWIQKVCYKARAALVKSMDMHWLLAQGRQDVSLSSLR  
 MLIVADGANPWSISSCDAFLNVQSRGLRPEVICPCASSPEALTVAIRPPDLGGPPPKAVLSMNGLSY  
 GVIRVDTEEKL SVLTVQDVGVMPGANVCVVKLEGTPYLCKTDEVGEICVSSSATGTAYYGLLGITKNVF  
 EAVPVTTGGAPIFDRPFTRTGLLGFIGPDNLVFIGKLDGLMVTGVRHNADDVVATALAVEMKFFVYRG  
 RIAVFSVTVLHDDRIVLVAEQRPDASEEDSFQWMSRVLQAIDSIHQVGVYCLALVPANTLPKAPLGGIHI  
 SETKQRFLEGLHPCNVLMCPHTCVTNLPKPRQKQPEVGPASMI VGNLVAGKRIAQASGRELAHLESDQ  
 ARKFLFLADVLQWRAHTTPDHPLFLLLNAKGTVTSTATCVQLHKAERVAALMEKGRLSVGDHVALVYP  
 PGVDLIAAFYGCGLYCGCVPTVTRPPHPQNLGTTLPTVKMIVEVSKSACVLTQAVTRLLRSKEAAAAVDI  
 RTWPTILDITDDIPKKIASVFRPPSPDVLAYLDFSVSTTGILAGVKMSHAATSALCRSIKLCQEL YPSRQ  
 IAICLDPYCGLGFALWCLCSVYSGHQSVLVPLELESNLSLWLSAVSQYKARVTFCSYSVMEMCTKGLGA  
 QTGVLRMKGVNLSCVRTCMVVAEERPRIALTQSF SKLFDLGLPARAVSTTFGCRVNVAIICLQGTAGPDP  
 TTVYVDMRALRHDRVRLVERGSPHSLPLMESGKILPGVKVIAHTETKGPLGDSLGEI WVSSPHNATGY  
 YTVYGEEALHADHFSARLSFGDTQTIWARTGYLGFLLRRELT DASGGRHDALYVVGSLDETELELRGMRYH  
 PIDIETSVIRAHRSIAECAVFTWNTLLVVVVELDGLEQDALDLVALVTNVVLEEHLVVGVVVIVDPGVI  
 PINSRGEKQRMHLRDGFLADQLDPIYVAYNM

TRTRPLE - GFP Tag - V

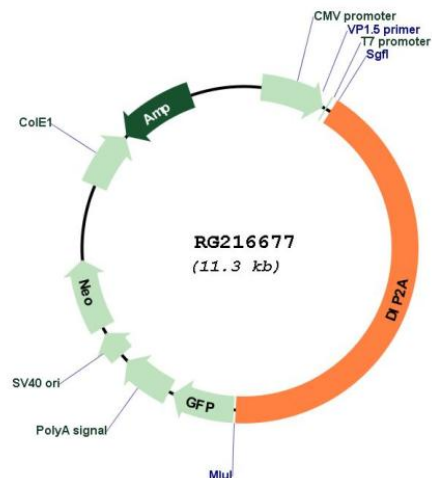
Restriction Sites: SgfI-MluI

Cloning Scheme:

Cloning sites used for ORF Shutting:



## Plasmid Map:



**ACCN:** NM\_015151

**ORF Size:** 4713 bp

**OTI Disclaimer:** The molecular sequence of this clone aligns with the gene accession number as a point of reference only. However, individual transcript sequences of the same gene can differ through naturally occurring variations (e.g. polymorphisms), each with its own valid existence. This clone is substantially in agreement with the reference, but a complete review of all prevailing variants is recommended prior to use. [More info](#)

**OTI Annotation:** This clone was engineered to express the complete ORF with an expression tag. Expression varies depending on the nature of the gene.

**Components:** The ORF clone is ion-exchange column purified and shipped in a 2D barcoded Matrix tube containing 10ug of transfection-ready, dried plasmid DNA (reconstitute with 100 ul of water).

**Reconstitution Method:**

1. Centrifuge at 5,000xg for 5min.
2. Carefully open the tube and add 100ul of sterile water to dissolve the DNA.
3. Close the tube and incubate for 10 minutes at room temperature.
4. Briefly vortex the tube and then do a quick spin (less than 5000xg) to concentrate the liquid at the bottom.
5. Store the suspended plasmid at -20°C. The DNA is stable for at least one year from date of shipping when stored at -20°C.

**RefSeq:** [NM\\_015151.4](#)

RefSeq Size: 5936 bp

RefSeq ORF: 4716 bp

Locus ID: 23181

UniProt ID: [Q14689](#)

Cytogenetics: 21q22.3

Domains: AMP-binding

**Gene Summary:** The protein encoded by this gene may be involved in axon patterning in the central nervous system. This gene is not highly expressed. Several transcript variants encoding different isoforms have been found for this gene. [provided by RefSeq, Mar 2009]