

## Product datasheet for **RG216669**

### DISC1 (NM\_001012957) Human Tagged ORF Clone

#### Product data:

Product Type:	Expression Plasmids
Product Name:	DISC1 (NM_001012957) Human Tagged ORF Clone
Tag:	TurboGFP
Symbol:	DISC1
Synonyms:	C1orf136; SCZD9
Mammalian Cell Selection:	Neomycin
Vector:	pCMV6-AC-GFP (PS100010)
E. coli Selection:	Ampicillin (100 ug/mL)



[View online »](#)

**ORF Nucleotide Sequence:**

>RG216669 representing NM\_001012957  
 Red=Cloning site Blue=ORF Green=Tags(s)

TTTTGTAATACGACTCACTATAGGGCGGCCGGGAATTCGTCGACTGGATCCGGTACCGAGGAGATCTGCC  
 GCC**CGGATCGCC**

ATGCCAGGCGGGGTCTCAGGGCGCCACGCCCGCCGGCGGGCGGCGGTGAGCCACCGCGCAGGCA  
 GCCGGGATTGCTTACCACCTGCAGCGTGCCTTCGGAGGCGCGGCTGGCACGGAGGCCGGCTACATGAG  
 AAGCTCGACAGGGCCTGGGATCGGGTCTTTCCCCAGCAGTGGGCACACTGTTCCGGTCCAGGAGGG  
 GTGTCTGGCGAGGAGTCCACCCTCGGAGTCCAGGGCCAGACAGTGTGGCCTTGACTCGAGAGGCCTCT  
 TGGTCCGGAGCCCTGTTTCCAAGAGTGCAGCAGCCCTACTGTGACCTCTGTGAGAGGAACCTCGGCGCA  
 CTTTGGGATTCAGCTCAGAGGTGGCACCAGATTGCCTGACAGGCTTAGCTGGCCGTGTGGCCCTGGGAGT  
 GCTGGGTGGCAGCAAGAGTTTGCAGCCATGGATAGTTCTGAGACCCTGGACGCCAGCTGGGAGGCAGCCT  
 GCAGCGATGGAGCAAGGCGTGTCCGGGCAGCAGGCTCTCTGCCATCAGCAGAGTTGAGTAGCAACAGCTG  
 CAGCCCTGGCTGTGGCCCTGAGGTCCCCCAACCCTCCTGGCTCTCACAGTGCCTTTACCTCAAGCTTT  
 AGCTTTATTTCGGCTCTCGCTTGGCTCTGCCGGGAACGTGGAGAAGCAGAAGGCTGCCACCATCCAGAG  
 AGGCTGAGTCCCATTGCCAGAGCCCCAGGAGATGGGAGCCAAAGCTGCCAGCTTGGACGGGCTCACGA  
 GGACCCGCGATGTCTCTCGGCCCTTCACTCTTGGCTACACGGGTCTCTGCAGACTTGGCCAGGCC  
 GCAAGGAACAGCTCCAGGCCAGAGCGTGACATGCATTCTTACCAGACATGGACCCTGGCTCCTCCAGTT  
 CTCTGGATCCCTCACTGGCTGGCTGTGGTGGTGTGGGAGCAGCGGCTCAGGGGATGCCACTCTTGGGA  
 CACCCTGCTCAGGAAATGGGAGCCAGTGTGCGGGACTGCCTGCTGAGAAACCGGAGGCAGATGGAGGTA  
 ATATCCTAAGATTAACAACTTACAGAACTTACAGAAAGTGCAGTTGAGAATGATGATTATGATAAAGTC  
 AGACGTTACAACAAGATTAGAAGACTTGAACAAGAGAAAATCAGCCTGCACCTTCAACTCTCTCAAG  
 GCAGCCAGCTCTTAGCAGTTTCTGGGTACCTGGCAGCACAAAGTCCAGGCTGCCTTGGCCGTGGGGCC  
 ACTCAGCAGGCCAGCGGAGATGACACCCACCCCCACTGAGAATGGAGCCGAGGCTGTTGGAACCCACTG  
 CTCAGGACAGCTTGCACGTGTCCATCACGAGACGAGACTGGCTTCTTACAGAAAAGCAGCAGCTACAGAA  
 AGAAATTAAGCTCTCCAAGCAAGGATGTTTGTGCTGGAAGCCAAAGATCAACAGCTGAGAAGGGAAATA  
 GAGGAGCAAGAGCAGCAACTCCAGTGGCAGGGCTGCGACCTGACCCCACTGGTGGCCAGCTGTCCCTGG  
 GTCAGCTGCAGGAGGTCAGCAAGGCTTGCAGGACACCCTGGCCTCAGCCGGTCAAGTCCCTTCCATGC  
 AGAGCCACCGAAACCATAAGGAGCCTCCAGGAAAGAATAAAATCCCTCAACTTGTCACTTAAAGAAATC  
 ACTACTAAGGTGTGTATGAGTGAGAAATCTGCAGCACCTGAGGAAGAAAGTTAACGATATTGAAACCC  
 AACTACCAGCCTTGTGTAAGCCAAAATGCATGCCATATCAGGAAACCATTTCTGGACGGCTAAAGACCT  
 CACCGAGGAGATTAGATCATTAAACATCAGAGAGAGAAGGGCTGGAGGGACTCCTCAGCAAGCTGTTGGTG  
 TTGAGTTCCAGGAATGTCAAAAAGCTGGGAAGTGTAAAGAAGATTACAACAGACTGAGAAGAGAAGTGG  
 AGCACCAGGAGACTGCCTATGAAACAAGTGTGAAGGAAAATACTATGAAGTACATGGAAACACTTAAAGAA  
 TAAACTGTGCAGCTGCAAGTGTCCACTGCTTGGGAAAGTGTGGGAAAGCTGACTTGGAAAGCTTGTGATTG  
 CTTATCCAGAGCCTACAGCTCCAGGAAGCCAGGGGAAGCCTGTCTGTAGAAGATGAGAGGCAGATGGATG  
 ACTTAGAGGGAGCTGCTCCTCTATTCCCCCAGGCTCCACTCCGAGGATAAAAGGAAGACCCCTTTGAA  
 GGAATCTTACATCCTTTCTGCAGAACTTGGAGAAAAGTGTGAAGACATAGGCAAGAAGCTATTGTACTTG  
 GAAGATCAACTTACACAGCAATCCACAGTCAATGATGAAGATCTCATTCACTCTCAGGAGGGAGCTCC  
 AGATGGTGAAGGAAACTCTGCAGCCATGATCCTGCAGCTCCAGCCAGCAAGGAGGCGGGAGAAAGAGA  
 AGCTGCAGCTTCTGCATGACAGCTGGTGTCCACGAAGCACAAGCC

**ACGGTACGCGGCCGCTCGAG** - GFP Tag - GTTTAA

**Protein Sequence:** >RG216669 representing NM\_001012957  
Red=Cloning site Green=Tags(s)

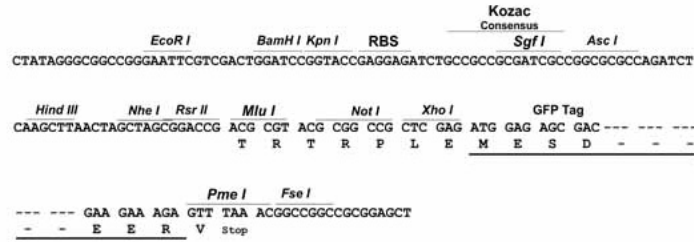
MPGGGPQGAPAAAGGGGVSHRAGSRDCLPPAACFRRRRLARRPGYMRSSSTGPGIGFLSPAVGTLFRFPGG  
VSGEESHSESRARQCGLDSRGLLVRSVSKSAAAPTVTSVRGTSAHFGIQLRGGTRLPDRLSWPCGPGS  
AGWQQEFAMDSSETLDASWEAACSDGARRVRAAGSLPSAELSSNSCSPGCGPEVPPTPPGSHSAFTSSF  
SFIRLSLGSAGERGEAEGCPPSREAESHCQSPQEMGAKAASLDGPHEDPRCLSRPFSLLATRVSADLAQA  
ARNSSRPERDMHSLPMDPGSSSLDPSLAGCGDGGSSGSDAHSWDTLLRKWEPVLRDCLLRNRRQMEV  
ISLRRLKQLKQEDAVENDDYDKAETLQQRLLEDLEQEKISLHFQLPSRQPALSSFLGHAAQVQAALRRGA  
TQQASGDDTHTPLRMEPRLLEPTAQDSLHVSITRRDWLLQEKKQLQKEIEALQARMFVLEAKDQQLRREI  
EEQEQLQWQCDLTPLVGQLSLGQLQEVSKALQDTLASAGQIPFHAEPETIRSLQERIKSLNLSLKEI  
TTKVMSEKFCSTLRKKVNDIETQLPALLEAKMHAI SGNHFWTAKDL TEEIRSLT SEREGLEGLLSKLLV  
LSSRNVKKLGSKEDYNRLRREVEHQETAYETSVKENTMKYMETLKNKLCCKCPLLKGVWEADLEACRL  
LIQSLQLQEARGSLSVEDERQMDDEGAAPP IPPRLHSEDKRKTPLKESYILSAELGEKCEDIGKLLYL  
EDQLHTAIHSHDEDLIQSLRRELQMVKETLQAMILQLQPAKEAGEREAAA SCMTAGVHEAQA

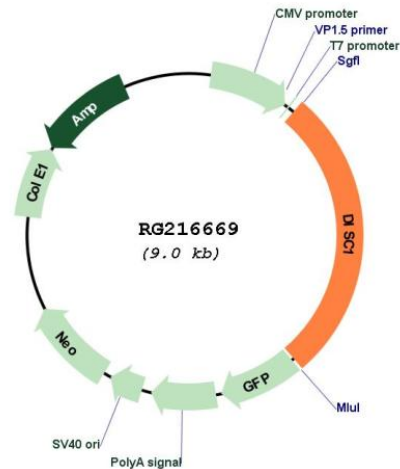
TRTRPLE - GFP Tag - V

**Restriction Sites:** Sgfl-Mlul

Cloning Scheme:

Cloning sites used for ORF Shutting:



**Plasmid Map:**


**ACCN:** NM\_001012957

**ORF Size:** 2496 bp

**OTI Disclaimer:** Due to the inherent nature of this plasmid, standard methods to replicate additional amounts of DNA in *E. coli* are highly likely to result in mutations and/or rearrangements. Therefore, OriGene does not guarantee the capability to replicate this plasmid DNA. Additional amounts of DNA can be purchased from OriGene with batch-specific, full-sequence verification at a reduced cost. Please contact our customer care team at [custsupport@origene.com](mailto:custsupport@origene.com) or by calling 301.340.3188 option 3 for pricing and delivery.

The molecular sequence of this clone aligns with the gene accession number as a point of reference only. However, individual transcript sequences of the same gene can differ through naturally occurring variations (e.g. polymorphisms), each with its own valid existence. This clone is substantially in agreement with the reference, but a complete review of all prevailing variants is recommended prior to use. [More info](#)

**OTI Annotation:** This clone was engineered to express the complete ORF with an expression tag. Expression varies depending on the nature of the gene.

**Components:** The ORF clone is ion-exchange column purified and shipped in a 2D barcoded Matrix tube containing 10ug of transfection-ready, dried plasmid DNA (reconstitute with 100 ul of water).

**Reconstitution Method:**

1. Centrifuge at 5,000xg for 5min.
2. Carefully open the tube and add 100ul of sterile water to dissolve the DNA.
3. Close the tube and incubate for 10 minutes at room temperature.
4. Briefly vortex the tube and then do a quick spin (less than 5000xg) to concentrate the liquid at the bottom.
5. Store the suspended plasmid at -20°C. The DNA is stable for at least one year from date of shipping when stored at -20°C.

RefSeq: [NM\\_001012957.1](#), [NP\\_001012975.1](#)

RefSeq Size: 7003 bp

RefSeq ORF: 2499 bp

Locus ID: 27185

UniProt ID: [Q9NRI5](#)

Cytogenetics: 1q42.2

**Gene Summary:** This gene encodes a protein with multiple coiled coil motifs which is located in the nucleus, cytoplasm and mitochondria. The protein is involved in neurite outgrowth and cortical development through its interaction with other proteins. This gene is disrupted in a t(1;11) (q42.1;q14.3) translocation which segregates with schizophrenia and related psychiatric disorders in a large Scottish family. Alternate transcriptional splice variants, encoding different isoforms, have been characterized. [provided by RefSeq, Jul 2008]