

## Product datasheet for **RG216666**

### **RAB28 (NM\_004249) Human Tagged ORF Clone**

#### Product data:

Product Type:	Expression Plasmids
Product Name:	RAB28 (NM_004249) Human Tagged ORF Clone
Tag:	TurboGFP
Symbol:	RAB28
Synonyms:	CORD18
Mammalian Cell Selection:	Neomycin
Vector:	pCMV6-AC-GFP (PS100010)
E. coli Selection:	Ampicillin (100 ug/mL)
ORF Nucleotide Sequence:	>RG216666 representing NM_004249 Red=Cloning site Blue=ORF Green=Tags(s)

TTTTGTAATACGACTCACTATAGGGCGCCGGGAATTCGTCGACTGGATCCGGTACCGAGGAGATCTGCC  
GCC**CGATCGCC**

ATGTCGGACTCTGAGGAGGAGAGCCAGGACCGCAACTGAAAAATCGTCGTGCTGGGGACGGCGCCTCCG  
GGAAGACCTCCTTAACACTACGTGTTTTGCTCAAGAACTTTGGGAAACAGTACAAACAACTATAGGACT  
GGATTTCTTTTGAAGGATAACATTGCCAGGAACTTGAATGTTACCCTTCAAATTTGGGATATAGGA  
GGCAGACAATAGGAGGCAAAATGTTGGATAAATATATCTATGGAGCACAGGGAGTCCTCTTGGTATATG  
ATATTACAAATTATCAAAGCTTTGAGAATTTAGAAGATTGGTATACTGTGGTGAAGAAAGTGAGCGAGGA  
GTCAGAAACTCAGCCACTGGTTGCCTTGGTAGGCAATAAAATTGATTTGGAGCATATGCGAACAATAAAA  
CCTGAAAAACACTTACGGTTTTGCCAGGAAAAATGGTTTTAGTAGCCACTTTGTCTCAGCCAAGACAGGAG  
ACTCTGTCTTCTGTGCTTTAGAAAGTTGCTGCTGAAATCCTTGGGATCAAATTAACAAAGCAGAAAT  
AGAACAGTCACAGCGTATTGTCAGGGCAGAAATAGTGAAGTACCCGGAAGAAGAAAAATCAACATACCACC  
TCTACTCAGAGTAGAATCTGTTTCAGTACAG

**ACGCGT**ACGCGGGCCGCTCGAG - GFP Tag - GTTTAA



[View online »](#)

**Protein Sequence:** >RG216666 representing NM\_004249  
 Red=Cloning site Green=Tags(s)

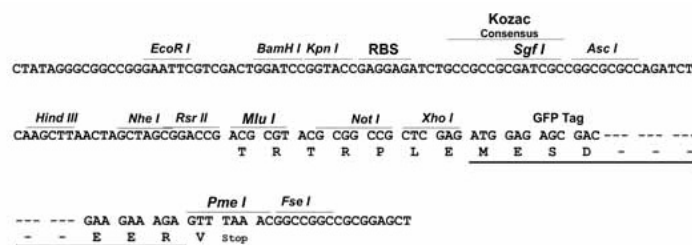
MSDSEESQDRQLKIVVLGDGASGKTSLLTTCFAQETFQKQYKQTIGLDFFLRRITLPGNLNVTLQIWDIG  
 GQTIGGKMLDKYIYGAQGVLLVYDITNYQSFENLEDWYTVVKKVSESESTQPLVALVGNKIDLEHMRTIK  
 PEKHLRFQENGFSSHFVSAKTGDSVFLFCFQKVAEILGIKLNKAEIEQSQRIVRAEIVKYPEEENQHTT  
 STQSRICSVQ

TRTRPLE - GFP Tag - V

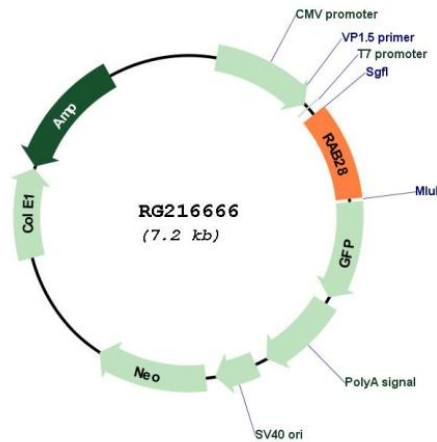
**Restriction Sites:** SgfI-MluI

**Cloning Scheme:**

Cloning sites used for ORF Shuttling:



**Plasmid Map:**



**ACCN:** NM\_004249

**ORF Size:** 660 bp

<b>OTI Disclaimer:</b>	The molecular sequence of this clone aligns with the gene accession number as a point of reference only. However, individual transcript sequences of the same gene can differ through naturally occurring variations (e.g. polymorphisms), each with its own valid existence. This clone is substantially in agreement with the reference, but a complete review of all prevailing variants is recommended prior to use. <a href="#">More info</a>
<b>OTI Annotation:</b>	This clone was engineered to express the complete ORF with an expression tag. Expression varies depending on the nature of the gene.
<b>Components:</b>	The ORF clone is ion-exchange column purified and shipped in a 2D barcoded Matrix tube containing 10ug of transfection-ready, dried plasmid DNA (reconstitute with 100 ul of water).
<b>Reconstitution Method:</b>	<ol style="list-style-type: none"><li>1. Centrifuge at 5,000xg for 5min.</li><li>2. Carefully open the tube and add 100ul of sterile water to dissolve the DNA.</li><li>3. Close the tube and incubate for 10 minutes at room temperature.</li><li>4. Briefly vortex the tube and then do a quick spin (less than 5000xg) to concentrate the liquid at the bottom.</li><li>5. Store the suspended plasmid at -20°C. The DNA is stable for at least one year from date of shipping when stored at -20°C.</li></ol>
<b>RefSeq:</b>	<a href="#">NM_004249.4</a>
<b>RefSeq Size:</b>	1827 bp
<b>RefSeq ORF:</b>	663 bp
<b>Locus ID:</b>	9364
<b>UniProt ID:</b>	<a href="#">P51157</a>
<b>Cytogenetics:</b>	4p15.33
<b>Domains:</b>	ras, RAN, RAS, RHO, RAB
<b>Protein Families:</b>	Druggable Genome
<b>Gene Summary:</b>	This gene encodes a member of the Rab subfamily of Ras-related small GTPases. The encoded protein may be involved in regulating intracellular trafficking. Alternative splicing results in multiple transcript variants. Pseudogenes of this gene are found on chromosomes 9 and X. [provided by RefSeq, Apr 2009]