

Product datasheet for **RG216652**

ANK1 (NM_020477) Human Tagged ORF Clone

Product data:

Product Type:	Expression Plasmids
Product Name:	ANK1 (NM_020477) Human Tagged ORF Clone
Tag:	TurboGFP
Symbol:	ANK1
Synonyms:	ANK; SPH1; SPH2
Mammalian Cell Selection:	Neomycin
Vector:	pCMV6-AC-GFP (PS100010)
E. coli Selection:	Ampicillin (100 ug/mL)
ORF Nucleotide Sequence:	>RG216652 representing NM_020477 Red=Cloning site Blue=ORF Green=Tags(s)

TTTTGTAATACGACTCACTATAGGGCGGCCGGAATTCGTCGACTGGATCCGGTACCGAGGAGATCTGCC
GCC**CGATCGCC**

ATGCCCTATTCTGTGGGCTTCCGCGAAGCCGATGCTGCTACCAGCTTTCTGAGAGCAGCAAGATCAGGTA
ACTTGGACAAAGCTTTGGATCACCTGCGGAATGGGGTAGATATTAACACCTGTAACCAGAATGGGTTGAA
TGGCTTGCATCTGGCTTCTAAGGAAGGCCATGTGAAAATGGTGGTTGAACCTCTGCACAAAGAAATCATT
CTAGAAAACGACAACCAAGAAGGGGAACACGGCCCTGCACATCGTCTAGCCGGGCAGGATGAGGTGG
TCCGGGAGCTTGTCAACTATGGAGCCAAGTCAACGCCAGTCACAGAAAGGTTTTACACCCTGTACAT
GGCAGCACAAGAGAACCCTTGAAGTGGTTAAGTTTTACTGGAAAATGGAGCTAACCGAATGTAGCC
ACAGAAGACGGCTTACGCCTCTGGCGGTAGCCCTGCAGCAGGGCCATGAGAACGTCGTCGCGCACCTCA
TCAACTACGGCACCAAGGGGAAGGTGCGCCTCCCGGCCCTGCACATCGCGGCCCGCAACGACGACACGCG
CACGGTGCGGTCTGCTGCAGAACGCCCAACCCGGACGTGCTTCCAAGACGGGATTACGCCCCCTG
CACATTGGCGTCACTACGAGAACCTCAACGTGGCCAGTTGCTCCTCAACAGAGGAGCCAGCGTCAATT
TCACACCACAGAACGGCATCACGCCACTGCACATCGCCTCCCGCAGGGGCAACGTGATCATGGTGGCGCT
GCTGCTGGATCGGGGAGCCAGATAGAAACCAAGCAAGGACGAATTGACACCTCTCCACTGTGCAGT
CGAAATGGGCACGTGCGAATCTCAGAGATCCTGCTGGACCAGGGGCACCAATCCAAGCCAAAACCAAGA
ACGGCCTGTCCCAATTCACATGGCGGCTCAGGGAGACCACCTCGACTGTGTCCGGCTCCTGTTGCAATA
CGACGCAGAGATAGACGACATCACCTGGACCCTGACCCCACTCCACGTGGCTGCCCACTGTGGACAC
CACAGGGTGGCTAAGTCTTCTGGATAAAGGGGCCAAACCCAACTCCAGAGCCCTGAATGGCTTTACCC
CCTTACACATCGCCTGCAAAAAGAACCAGTCCGTGTCATGGAGTCTGCTGAAGACGGGAGCCTCGAT
CGACGCGTCAACGAGTCTGGCCTGACACCTCTCCACGTGGCCTCCTTATGGGGCACCTTCCCATCGT
AAGAACCCTCTGCAGCGGGGGCGTCGCCAACGTCTCCAACGTGAAAGTGGAGACCCCGCTACACATGG
CAGCCAGACCGGGCACACGGAAGTGGCCAAATATTTACTCCAGAACAAGCCAAAGTCAATGCCAAGGC
CAAGGATGACCAGACCCCACTTCACTGTGCAGCTCGCATCGGCCACACAAACATGGTGAAGCTCCTGCTG



[View online »](#)

GAAAATAACGCCAACCCCAACCTGGCCACCACCGCCGGGCACACCCCCTGCACATTGCAGCCCGTGAGG
GCCATGTGAAACAGTCTCTGGCCCTTCTGGAAAAGGAAGCATCCCAGGCCTGCATGACCAAGAAAGGATT
TACCCCTCTGCACGTGGCGGCCAAGTACGGGAAGGTGCGGGTGGCAGAGCTGCTGCTGGAGCGGGACGCA
CACCCGAATGCTGCCGAAAAAATGGCCTGACCCCTGCACGTGGCCGTCCATCACAACAACTGGACA
TCGTCAAGCTGCTGCTCCCCGGGGCGGCTCCCCGCACAGCCCTGCCTGGAATGGCTACACCCCTTTGCA
CATCGTGCACAAGCAGAACCAGGTGGAGGTGGCCCGTAGTCTGCTGCAGTATGGGGCTCAGCAAACGCC
GAGTCGGTGCAGGTGTGACGCCCTTACCTGGCCGCCAGGAGGCCACGCAGAGATGGTGGCTCTGC
TGCTCTCGAAACAAGCCAATGGCAACCTGGGGAACAAGAGCGGACTCACTCCCCTCCATCTGGTAGCACA
AGAAGGCCACGTTCCAGTGGCAGATGTGCTGATCAAACACGGCGTCATGGTGGACGCCACCACCCGGATG
GGTACACTCCCCTCCATGTGGCCAGTCACTATGGAAACATCAAGCTGGTGAAGTTTCTGCTGCAGCACC
AGGCAGATGTCAATGCCAAGACCAAGCTAGGATACAGCCCTGCACCAGGCAGCCAGCAGGGACACAC
AGACATCGTGACTCTGCTTCTGAAAAACGGTCTTCCCCAAACGAGGTGAGCTCGGATGGAACCACACT
CTGGCCATAGCCAAGCGTTGGGCTACATTTCTGTCACCGACGTGCTCAAGGTCGTCACGGATGAAACCA
GTTTCGTGTTAGTCAGTGATAAGCATCGAATGAGTTTCCCTGAGACAGTTGATGAGATCCTGGATGTCTC
GGAAGATGAAGGGGAAGAACTCATCAGTTCAAGGCTGAGAGCGGGATTCCAGGGATGTTGATGAAGAG
AAGGAGCTGCTGGATTTTGTGCCGAAGTAGACCAAGTGGTGAATCTCCAGCCATCCCCAGGATTCCT
GTGCCATGCCTGAGACAGTGGTGTGATCAGGTCAGAAGAGCAGGAGCAGGCATCTAAAGAGTATGATGAGGA
CTCCCCTCATCCCCAGCAGCCCGCCACCAGACCTCAGACAACATCAGCCCGGTGGCCAGCCCGGTGCAT
ACAGGGTTTCTGGTGAGCTTTCATGGTTGACGCCCGGGTGGTTCCATGAGAGGAAGTCGCCACAACGGCC
TGCGAGTGGTGTATCCCGCCACGGACGTGCGCAGCGCCACCCGCATCACCTGCCGCTGGTCAAGCCCCA
GAAGCTCAGCAGCCGCCCCACTGGCCGAGGAGGAGGGCCTGGCCAGCAGGATCATAGCACTGGGGCC
ACGGGGGCACAGTTCCTGAGCCCTGTAATCGTGGAGATCCCGACTTTGCCTCCATGGCCGTGAGAGCC
GCGAGTCGTGGTTCTGAGGAGGAAAAACGGCTCCGTGTGGAAGGAGCACAGGAGCCGCTATGGAGAG
CTACCTGGATCAGATCCTCAACGGGATGGACGAAGAGCTGGGGAGCCTGGAGGAGCTAGAGAAGAAGAGG
GTGTGCCGAATCATCACACCGACTTCCCGCTGTACTTCTGTGATCATGTACGGCTCTGCCAGGACTACG
ACACCATCGTCCGAAGGGGGCTCCCTGAAGAGCAAGCTGGTGGCCCTGGTACAGGCAACGTTCCCGGA
GAATGCCGTACCAAGAGAGTGAAGCTGGCTCTGCAGGCCAGCCTGTCCCGGATGAGCTTGTACTAAG
CTCCTGGGCAACCAGGCCACATTAGCCCAATTGTACCGTGGAGCCCGCGCCGGAAGTTCCACCGCC
CCATTGGCTTCGGATCCCACTACCTCCTTCTGGACGACAACCCGAGGGACAGCGGGAGGGAGACAC
CACCAGCTGCGCTGCTTTGCAGCGTCATTGGAGGAACAGACCAAGCCAGTGGGAAGACATAACAGGA
ACCACCAAATTTGATATGCCAACGAGTGCGCCAACTTACCACCAATGTCTCTGCCAGTTTTGGCTGT
CGGACTGTCTCGGACTGCTGAGGCTGTGAATTTGCCACCCTGTGTACAAAGAGCTCACTGCAGTGCC
CTACATGGCCAAATTCGTATCTTTGCCAAGATGAATGACCCCGAGAGGGGGCCTGCGCTGCTACTGC
ATGACAGATGATAAAGTGGACAAGACCCTGGAGCAGCATGAGAATTCGTGGAGGTGGCCCGGAGCAGGG
ACATAGAGGTGTTGGAAGGAATGTCCCTGTTTGCAGAATCTCTGGGAACCTGGTGCCTGTGAAGAAAGC
TGCCAGCAGCGGAGCTTCCACTTCCAGTCATTTCCGGGAGAACCCTGTGGCCATGCCTGTAAAGGTGAGG
GACAGCAGTCGAGAGCCGGGAGGGTCCCTGTGTTTCTGCGCAAGGCGATGAAGTACGAGGACACCCAGC
ACATTCCTGCCACCTGAACATCACCATGCCCCCTGCGCAAGGGAAGTGGAGCCGAAGATAGGAGAAG
GAGCAGGCAGAGATGAAGATGGCTGTTATCTCAGAGCACCTCGGTCTCAGCTGGGAGAGTTGGCCCGGG
AGCTGCAGTTCAGTGTGGAAGACATCAACAGGATCCGAGTGGAAAATCCCAACTCCTGTTGGAGCAGAG
TGTGGCCTTGCTGAACCTCTGGGTATCCGTGAAGGCCAAAACGCAACATGGAGAATCTGTACACAGCC
CTGCAGAGCATTGACCGTGGCGAGATCGTGAACATGCTGGAGGGTTCCGGCCGACAGAGCCGCAACTTGA
AGCCAGACAGGGGCACACCGACCGGACTACTCGCTGTACCCTCCAGATGAATGGCCATCAGAGGGG
GCAAGCCGAATCACACATTCACCCACCGTGAAGTACGGTACGGAGAGGAGTACGACAGACTGCAGGAC
TGGGATGCAGACGGCTCGATTGTCTCATACCTGCAAGATGCTGCACAAGGTTCTGGCAAGAGGAGTCA
CGCAAGGTCCACACTATTCCAGGGAACAAGTACCATGACTGAAGGGCTAGAGCCCGGTGGATCTCAGGA
GTACGAGAAGGTCTGGTGTCTGTAAGTGAACACAGTGGACAGAACAGCCCGAGGCTGAGAGCTCCAG
GCCGACAGGGACCGGAGGAGCAAGGCCAAGAAGAGCAGGTGCAGGAGGCCAAGAACACCTTACCCAAAG
TGGTGCAGGGGAATGAGTTTCAAGATATTCAGGGGAGCAGGTGACAGAGGAGCAATTACCGGATGAGCA
GGGCAACATTGTACCAAGAAGATCATTGCAAGGTGGTTCGACAGATAGACTTGTCCAGCGCCGATGCC
GCCAGGAGCAGGAGGAGTGTAGAGGGGCCCTGGAGGATCCCAGTGAAGTGGAGGTCGATATTG

ATTACTTTATGAAACACTCCAAGGATCACACCTCGACACCCAACCCC

ACGCGTACGCGGCCGCTCGAG – GFP Tag – GTTTAA

Protein Sequence:

>RG216652 representing NM_020477

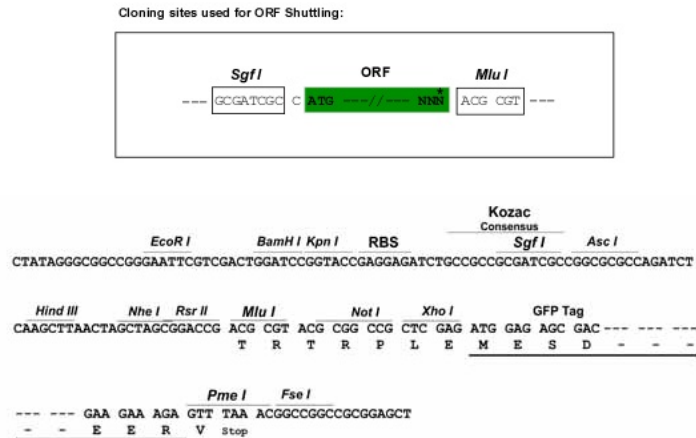
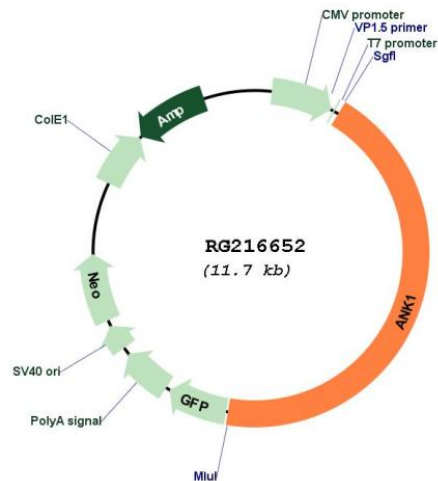
Red=Cloning site Green=Tags(s)

MPYSVGFREDAATSFLRAARSGNLDKALDHLRNGVDINTCNQNLNGLHLASKEGHVKMVVELLHKEII
 LETTTKKGNTALHIAALAGQDEVVREL VNYGANVNAQSQKGF TPLYMAAQENHLEVVKF LLENGANQNV
 TEDGFTPLAVALQQGHENVVAHL INYGTGKGVRLPALHIAARND DTRTAAVLLQNDPNPDVL SKTGFTPL
 HIAAHYENL NVAQLLLNRGASVNF TPQNGITPLH IASRRGNVIMVRL LLD RGAQIETKTKDEL TPLHCAA
 RNGTHVRI SEILLDHGAPIQAKTKNGL SPIHMAAQGDH LDCVRL LLQYDAE IDDI TL DHL TPLHVAACHG
 HRVAKVLLDKGAKPNSRALNGFTPLHIACKKNHVRVMEL LLKTGASIDAVTESGL TPLHVASF MGHLP IV
 KNLLQRGASPNVSNVKVETPLHMAARAGHTEVAKYLLQNKAKVNAKAKDDQTPLHCAARIGHTNMVKLL
 ENNANPNLATTAGHTPLHIAAREGHVETVLALLEKEASQACMTKKGFTPLHVAAKYGVKRVVAELLERDA
 HPNAAAGKNGL TPLHVAVHHNNDI V KLLLP RGGSPHSPAWN GY TPLHIAAKQNQVEVAR SLLQYGGSANA
 ESVQGV TPLHAAQEGHAEMVALL SKQANGNLGNK SGL TPLHLVAQEGHVPVADVL IKHGMVMDATTRM
 GY TPLHVASHYGNIKL VKFLLQH QADVNAKTKL GYSPLHQAAQQGHTDI V TLLKNGASPNEVSSDGTTP
 LAIAKRLGYISVTDV LKVV TDETSFVL VSDKHRMSFPETVDEILDVSEDEGEELISFKAERRSDRVDEE
 KELLDFVPKLDQVVE SPAIPRIPCAMPETVVIRSEEQE QASKEYDEDSLIPSSPATETS DNI SPVASPVH
 TGFLV S F MVDARGGSMRGSRHNGLRVVI PPRTCAAPTRITCRLVKPQKLS T P P P L A E E E G L A S R I I A L G P
 TGAQFLSPVIVEIPHFASHGRGDRELVL RSENGSVWKEHRSRYGESYLDQILNGMDEELGSL E E L E K K R
 VCRIITTD F P L Y F V I M S R L C Q D Y D T I G P E G G S L S K L V P L V Q A T F P E N A V T K R V K L A L Q A Q P V P D E L V T K
 LLGNQATFSPIVTVEPRRRKFHRPIGLRIPLPPSWTDNPRDSGEGD T T S L R L L C S V I G G T D Q A Q W E D I T G
 TTKLVYANECANFTTNVSARFWLSDCPRTAEAVNFATLLYKELTAVPYMAKFVIFAKMNDPREGRLRCYC
 MTDDKVDK TLEQH ENFVEVARSDIEVLEGM S L F A E L S G N L V P V K K A A Q Q R S F H F Q S F R E N R L A M P V K V R
 DSSREPGGSL SFLRKAMKYEDTQHILCHLNITMPPCAKGS GAEDRRRTPTPLALRYSILSESTPGSLSGT
 EQAEMKMAVISEHLGLSWAELARELQF SVEDINRIRVENPNSLLEQSVALLNLWVIREGQANMENLYTA
 LQSIDRGEIVNMLEGSGRQSRNLK PDRRHTDRDYSLS P S Q M N G H Q R G Q A R I T H S P T V S Q V T E R S Q D R L Q D
 WDADGSIVSYLQDAAQGSWQEEVTQGP H S F Q G T S T M T E G L E P G G S Q E Y E K V L V S V S E H T W T E Q P E A E S S Q
 ADRDRRQQGQEEQVQEAKNFTTQVVQGNFQNI PGEQVTEEQFTDEQGNI VTKKIIRKVVVRQIDLSSADA
 AQEHEEVTVEGPLDPSLEVDIDYFMKHSKDHTSTPNP

TRTRPLE – GFP Tag – V

Restriction Sites:

SgfI-MluI

Cloning Scheme:

Plasmid Map:


ACCN: NM_020477

ORF Size: 5157 bp

OTI Disclaimer: The molecular sequence of this clone aligns with the gene accession number as a point of reference only. However, individual transcript sequences of the same gene can differ through naturally occurring variations (e.g. polymorphisms), each with its own valid existence. This clone is substantially in agreement with the reference, but a complete review of all prevailing variants is recommended prior to use. [More info](#)

OTI Annotation: This clone was engineered to express the complete ORF with an expression tag. Expression varies depending on the nature of the gene.

Components: The ORF clone is ion-exchange column purified and shipped in a 2D barcoded Matrix tube containing 10ug of transfection-ready, dried plasmid DNA (reconstitute with 100 ul of water).

Reconstitution Method:

1. Centrifuge at 5,000xg for 5min.
2. Carefully open the tube and add 100ul of sterile water to dissolve the DNA.
3. Close the tube and incubate for 10 minutes at room temperature.
4. Briefly vortex the tube and then do a quick spin (less than 5000xg) to concentrate the liquid at the bottom.
5. Store the suspended plasmid at -20°C. The DNA is stable for at least one year from date of shipping when stored at -20°C.

RefSeq: [NM_020477.3](#)

RefSeq Size: 7754 bp

RefSeq ORF: 5160 bp

Locus ID: 286

UniProt ID: [P16157](#)

Cytogenetics: 8p11.21

Protein Families: Transmembrane

Gene Summary: Ankyrins are a family of proteins that link the integral membrane proteins to the underlying spectrin-actin cytoskeleton and play key roles in activities such as cell motility, activation, proliferation, contact and the maintenance of specialized membrane domains. Multiple isoforms of ankyrin with different affinities for various target proteins are expressed in a tissue-specific, developmentally regulated manner. Most ankyrins are typically composed of three structural domains: an amino-terminal domain containing multiple ankyrin repeats; a central region with a highly conserved spectrin binding domain; and a carboxy-terminal regulatory domain which is the least conserved and subject to variation. Ankyrin 1, the prototype of this family, was first discovered in the erythrocytes, but since has also been found in brain and muscles. Mutations in erythrocytic ankyrin 1 have been associated in approximately half of all patients with hereditary spherocytosis. Complex patterns of alternative splicing in the regulatory domain, giving rise to different isoforms of ankyrin 1 have been described. Truncated muscle-specific isoforms of ankyrin 1 resulting from usage of an alternate promoter have also been identified. [provided by RefSeq, Dec 2008]