

## Product datasheet for **RG216651**

### SEMA4C (NM\_017789) Human Tagged ORF Clone

#### Product data:

Product Type:	Expression Plasmids
Product Name:	SEMA4C (NM_017789) Human Tagged ORF Clone
Tag:	TurboGFP
Symbol:	SEMA4C
Synonyms:	M-SEMA-F; SEMACL1; SEMAF; SEMAI
Mammalian Cell Selection:	Neomycin
Vector:	pCMV6-AC-GFP (PS100010)
E. coli Selection:	Ampicillin (100 ug/mL)



[View online »](#)

**ORF Nucleotide Sequence:**

>RG216651 representing NM\_017789  
 Red=Cloning site Blue=ORF Green=Tags(s)

TTTTGTAATACGACTCACTATAGGGCGGCCGGAATTCGTCGACTGGATCCGGTACCGAGGAGATCTGCC  
 GCC**CGCATCGCC**

ATGGCCCCACACTGGGCTGTCTGGCTGCTGGCAGCAAGGCTGTGGGGCTGGGCATTGGGGCTGAGGTGT  
 GGTGGAACCTTGTGCCGGTAAGACAGTGTCTTCTGGGGAGCTGGCCACGGTAGTACGGCGTTCTCCCA  
 GACCGGCATCCAGGACTTCTGACACTGACGCTGACGGAGCCACTGGGCTTCTGTACGTGGGCGCCCGA  
 GAGGCCCTGTTTGCCTTCAGCATGGAGGCCCTGGAGCTGCAAGGAGCGATCTCTGGGAGGCCCCCGTGG  
 AGAAGAAGACTGAGTGTATCCAGAAAGGAAGAACAACCAGACCGAGTGTCAACTTACCGCTTCT  
 GCAGCCCTACAATGCCTCCACCTGTACGTCTGTGGCACCTACGCCTTCCAGCCCAAGTGCACCTACGTC  
 AACATGCTCACCTTCACTTTGGAGCATGGAGAGTTTGAAGATGGGAAGGGCAAGTGTCCCTATGACCCAG  
 CTAAGGGCCATGCTGGCCTTCTTGTGGATGGTGTGAGCTGTACTCGCCACACTCAACAACCTTCTGGGCAC  
 GGAACCCATTATCTGCGTAACATGGGGCCCCACCACTCCATGAAGACAGAGTACCTGGCCTTTTGGCTC  
 AACGAACCTCACTTTGTAGGCTCTGCCTATGTACCTGAGAGTGTGGGCAGCTTACAGGGGGACGACGACA  
 AGGTCTACTTCTTCTTACGGGAGCGGGCAGTGGAGTCCGACTGCTATGCCGAGCAGGTGGTGGCTCGTGT  
 GGCCCGTGTCTGCAAGGGCGATATGGGGGGCGCACGGACCCTGCAGAGGAAGTGGACCACGTTCTGAA  
 GCGCGGCTGGCATGCTCTGCCCCGAACCTGGCAGCTCTACTTCAACCAGCTGCAGGCGATGCACACCTGC  
 AGGACACCTCCTGGCACAACACCACCTTCTTGGGGTTTTTCAAGCACAGTGGGGTGACATGTACCTGTC  
 GGCCATCTGTGAGTACCAGTTGGAAGAGATCCAGCGGGTGTGGAGGGCCCTATAAGGAGTACCATGAG  
 GAAGCCCGAGAAGTGGGACCGCTACACTGACCTGTACCCAGCCCTCGGCCTGGCTCGTGCATTAACT  
 CCCGCTGATGGAGGAGCAGGTGGGGCTCGGTGGAGCCGCCCCCTGCTCGTGAAGAAGGGCACCACTTC  
 ACCCACCTGTTGGCCGACCGGGTTACAGGACTTGTATGGAGCCACCTATACAGTGTGTTTATTGGCACAG  
 GAGACGGCTGGTGTCAAGGCTGTGAGCCTGGGGCCCTGGGTTACCTGATTGAGGAGCTGCAGCTGTT  
 TGACCAGGAGCCCATGAGAAGCCTGGTGTATCTCAGAGCAAGAAGTGTCTTTGCCGGCTCCCGCTCT  
 CAGCTGGTGCAGCTGCCCGTGGCCGACTGCATGAAGTATCGTCTCTGTGCAGACTGTGCTCTGCCCGGG  
 ACCCCTATTGCGCCTGGAGCGTCAACACCAGCCGCTGTGTGGCCGTGGGTGGCCACTCTGGATCTCTACT  
 GATCCAGCATGTGATGACCTCGGACACTCAGGCATCTGCAACCTCCGTGGCAGTAAGAAAGTCAAGCCC  
 ACTCCCAAAAACATCACGGTGGTGGCGGGCACAGACCTGGTGTGCCCTGCCACCTCTCCTCCAACCTGG  
 CCCATGCCCGCTGGACCTTTGGGGGGCCGGACCTGCCTGCGGAACAGCCCGGGACCTTCCCTACGATGC  
 CCGGCTCCAGGCCCTGGTTGTGATGGCTGCCAGCCCCGCCATGCCGGGGCTACCACTGCTTTTACAGAG  
 GAGCAGGGGGCGCGGCTGGCTGTGAAGGCTACCTTGTGGCTGTGCTGGCAGGCCCGTGGTGTGACCTTGG  
 AGGCCCGGGCCCCCTGGAAAACCTGGGGCTGGTGTGGCTGGCGGTGGTGGCCCTGGGGGCTGTGTGCT  
 GGTGCTGCTGCTGCTGGTGTGCTCATTGCGCCGGCGGCTGCGGGAAGAGCTGGAGAAAGGGGCAAGGCT  
 ACTGAGAGGACCTTGGTGTACCCCTGGAGCTGCCAAGGAGCCCAAGTCCCCCTTCCGGCCCTGTC  
 CTGAACCAGATGAGAACTTTGGGATCCTGTGCGTTACTACTATTAGATGGCTCCCTTAAGATAGTACC  
 TGGGCATGCCCGGTGCCAGCCCGTGGGGGGCCCCCTTCCGACCTCCAGGCATCCAGGCCAGCCCTGTG  
 CCTTCTCAACTCGGCTTACCTGGGGGGTGGGCGGAACTCAAATGCCAATGGTTACGTGCGCTTACAAC  
 TAGGAGGGGAGGACCGGGGAGGGCTCGGGCACCCCTGCCTGAGCTCGCGGATGAACTGAGACGCAAACT  
 GCAGCAACGCCAGCCACTGCCGACTCCAACCCGAGGAGTCATCAGTA

**ACCGT**ACGCGGCCGCTCGAG – GFP Tag – GTTTAA

**Protein Sequence:** >RG216651 representing NM\_017789  
 Red=Cloning site Green=Tags(s)

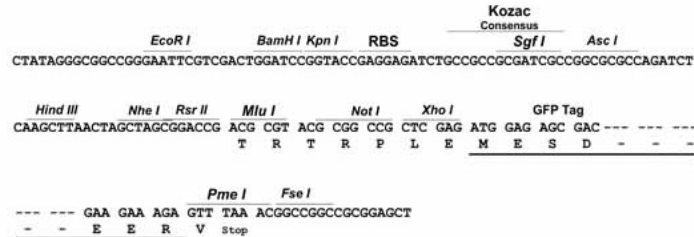
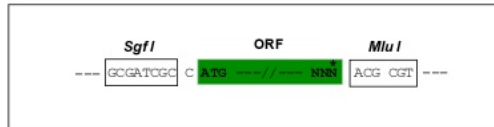
MAPHWAVWLLAARLWGLGIGAEVWVNLVPRKTVSSGELATVVRFRSQTGIQDFLTLTLEPTGLLYVGAR  
 EALFAFSMEALELQGAISWEAPVEKKTECIQKGKNNQTECFNFI RFLQPNASHLYVCGTYAFQPKCTYV  
 NMLTFTLEHGEFEDGKKGKCPYDPAKGHAGLLVDGELYSATLNNFLGTEPIILRNMGPHHSMKTEYLAFWL  
 NEPHFVGSAYVPESVGSFTGDDDKVYFFFRERAVESDCYAEQVVARVARVCKGDMGGARTLQRKWTFFLK  
 ARLACSAPNWQLYFNQLQAMHTLQDTSWHNTTFFGVFQAQWGDMYLSAICEYQLEEIQRVFEGPYKEYHE  
 EAQKWDRYTDPVPSRPGSCINNWHRRHGYTSSLELDPNILNFVKKHPLMEEQVGPWRWSRPLLVKKGTFN  
 THLVADRVTGLDGATYTVLFIGTGDGWLKAVSLGPWVHLIEELQLFDQEPMRSLVLSQSKLLFAGSRS  
 QLVQLPVADCMKYRSCADCVLARDPYCAWSVNTSRCVAVGGHSGSLLIQHVMTSDTSGICNLRGSKKVRP  
 TPKNITVVAGTDLVLPCHLSSNLAHARWTFGGRDLPAEQPGTFLYDARLQALVMAAQPRHAGAYHCFSE  
 EQGARLAAEGYLVAVVAGPSVTLEARAPLENLGLVWLAVALGAVCLVLLLLVLSLRRRLREELEKGAKA  
 TERTLVYPLELPKEPTSPFPRCPPEPDEKLWDPVGYYSYSDGSLKIVPGHARCQGGGPPSPPPGIPGQPL  
 PPSPTLHLGGGRNSNANGYVRLQLGGEDRGGLGHPLPELADELRRKLQQRQPLPDSNPEESSV

TRTRPLE - GFP Tag - V

**Restriction Sites:** Sgfl-MluI

**Cloning Scheme:**

Cloning sites used for ORF Shutting:


**ACCN:** NM\_017789

**ORF Size:** 2499 bp

**OTI Disclaimer:** The molecular sequence of this clone aligns with the gene accession number as a point of reference only. However, individual transcript sequences of the same gene can differ through naturally occurring variations (e.g. polymorphisms), each with its own valid existence. This clone is substantially in agreement with the reference, but a complete review of all prevailing variants is recommended prior to use. [More info](#)
**OTI Annotation:** This clone was engineered to express the complete ORF with an expression tag. Expression varies depending on the nature of the gene.

**Components:** The ORF clone is ion-exchange column purified and shipped in a 2D barcoded Matrix tube containing 10ug of transfection-ready, dried plasmid DNA (reconstitute with 100 ul of water).

**Reconstitution Method:**

1. Centrifuge at 5,000xg for 5min.
2. Carefully open the tube and add 100ul of sterile water to dissolve the DNA.
3. Close the tube and incubate for 10 minutes at room temperature.
4. Briefly vortex the tube and then do a quick spin (less than 5000xg) to concentrate the liquid at the bottom.
5. Store the suspended plasmid at -20°C. The DNA is stable for at least one year from date of shipping when stored at -20°C.

**RefSeq:** [NM\\_017789.3](#), [NP\\_060259.3](#)

**RefSeq Size:** 3537 bp

**RefSeq ORF:** 2502 bp

**Locus ID:** 54910

**UniProt ID:** [Q9C0C4](#)

**Cytogenetics:** 2q11.2

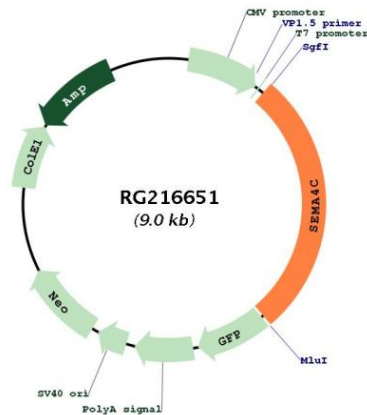
**Domains:** PSI, IG, PSI

**Protein Families:** Transmembrane

**Protein Pathways:** Axon guidance

**Gene Summary:** Cell surface receptor for PLXNB2 that plays an important role in cell-cell signaling. PLXNB2 binding promotes downstream activation of RHOA and phosphorylation of ERBB2 at 'Tyr-1248'. Required for normal brain development, axon guidance and cell migration (By similarity). Probable signaling receptor which may play a role in myogenic differentiation through activation of the stress-activated MAPK cascade.[UniProtKB/Swiss-Prot Function]

**Product images:**



Circular map for RG216651