

Product datasheet for **RG216640**

CD98 (SLC3A2) (NM_002394) Human Tagged ORF Clone

Product data:

Product Type:	Expression Plasmids
Product Name:	CD98 (SLC3A2) (NM_002394) Human Tagged ORF Clone
Tag:	TurboGFP
Symbol:	CD98
Synonyms:	4F2; 4F2HC; 4T2HC; CD98; CD98HC; MDU1; NACAE
Mammalian Cell Selection:	Neomycin
Vector:	pCMV6-AC-GFP (PS100010)
E. coli Selection:	Ampicillin (100 ug/mL)



[View online »](#)

ORF Nucleotide Sequence:

>RG216640 representing NM_002394
 Red=Cloning site Blue=ORF Green=Tags(s)

TTTTGTAATACGACTCACTATAGGGCGGCCGGAATTCGTCGACTGGATCCGGTACCGAGGAGATCTGCC
 GCC**CGGATCGCC**

ATGGAGCTACAGCCTCCTGAAGCCTCGATCGCCGTCGTGTCGATTCCGCGCCAGTTGCCTGGCTCACATT
 CGGAGGCTGGTGTCCAGGTCTCAGCGCGGGGACGACTCAGAGTTGGGGTCTCACTGTGTGCCAGAC
 TGGTCTCGAACTCTTGGCCTCAGGTGATCTCTTCCCTCAGCTTCCAGAAATGCCGAGATGATAGAGACG
 GGGTCTGACTGTGTTACCCAGGCTGGTCTTCAACTCTTGGCCTCAAGTGATCCTCTGCCTTAGCTTCCA
 AGAATGCTGAGGTTACAGGCACCATGAGCCAGGACACCGAGGTGGATATGAAGGAGGTGGAGCTGAATGA
 GTTAGAGCCCAGAAAGCAGCCGATGAACCGGCGTCTGGGGCGGCCATGTCCCTGGCGGGAGCCGAGAAG
 AATGGTCTGGTGAAGATCAAGGTGGCGGAAGACGAGGCGGAGGCGGAGCCGCGGCTAAGTTCACGGGCC
 TGTCCAAGGAGGAGCTGCTGAAGGTGGCAGGACGCCCCGGCTGGGTACGACCCGCTGGGCACTGCTGCT
 GCTCTTCTGGCTCGGCTGGCTCGCATGCTTGCTGGTGGCGTGGTCATAATCGTGCAGCGCCGCGTTGT
 CCGGAGCTACCGGCGCAGAAGTGGTGGCACACGGGCGCCCTCTACCGCATCGGCGACCTTCAGGCCCTCC
 AGGGCCACGGCGCGGGCAACCTGGCGGGTCTGAAGGGGCGTCTCGATTACCTGAGCTCTCTGAAGGTGAA
 GGGCCTTGTGCTGGGTCCAATTCACAAGAACGAGAAGGATGATGTCGCTCAGACTGACTTGTGCAGATC
 GACCCCAATTTTGGCTCCAAGGAAGATTTTGACAGTCTCTTGAATCGGCTAAAAAAGAGCATCCGTG
 TCATTCTGGACCTTACTCCCACTACCGGGGTGAGAACTCGTGGTTCTCCACTCAGGTTGACACTGTGGC
 CACCAAGGTGAAGGATGCTCTGGAGTTTGGCTGCAAGCTGGCGTGGATGGGTTCAGGTTCCGGACATA
 GAGAATCTGAAGGATGCATCCTCATTCTTGGCTGAGTGGCAAAATATACCAAGGGCTTCAGTGAAGACA
 GGCTCTTGATTGCGGGGACTAACTCCTCCGACCTTCAGCAGATCCTGAGCCTACTCGAATCCAACAAAGA
 CTTGCTGTTGACTAGCTCATACCTGTCTGATTCTGGTTCTACTGGGGAGCATACAAAATCCCTAGTCACA
 CAGTATTTGAATGCCACTGGCAATCGCTGGTGCAGCTGGAGTTTGTCTCAGGCAAGGCTCCTGACTTCCT
 TCTTGCCGGCTCAACTTCTCCGACTCTACCAGCTGATGCTCTTACCCTGCCAGGACCCCTGTTTTAG
 CTACGGGGATGAGATTGGCCTGGATGCAGCTGCCCTTCTGGACAGCCTATGGAGGCTCCAGTCATGCTG
 TGGGATGAGTCCAGCTTCCCTGACATCCAGGGGCTGTAAGTGCCAACTGACTGTGAAGGGCCAGAGTG
 AAGACCTGGCTCCCTCCTTTCTTGTTCGGCGGCTGAGTGACCAGCGGAGTAAGGAGCGCTCCCTACT
 GCATGGGACTTCCACGCGTTCTCCGCTGGCCTGGACTCTTCTCTATATCCGCCACTGGGACCAGAAT
 GAGCGTTTTCTGGTAGTGCTTAACCTTGGGGATGTGGGCTCTCGGCTGGACTGCAGGCCTCCGACCTGC
 CTGCCAGCGCCAGCCTGCCAGCAAGGCTGACCTCCTGCTCAGCACCAGCCAGGCGGTGAGGAGGGCTC
 CCCTCTTGAGCTGGAACGCTGAAACTGGAGCCTCACGAAGGGCTGCTGCTCCGCTTCCCTACGCGGCC

AG**CGGACCG**ACGCGTACGCGGCCGCTCGAG - GFP Tag - GTTTAA

Protein Sequence:

>RG216640 representing NM_002394
 Red=Cloning site Green=Tags(s)

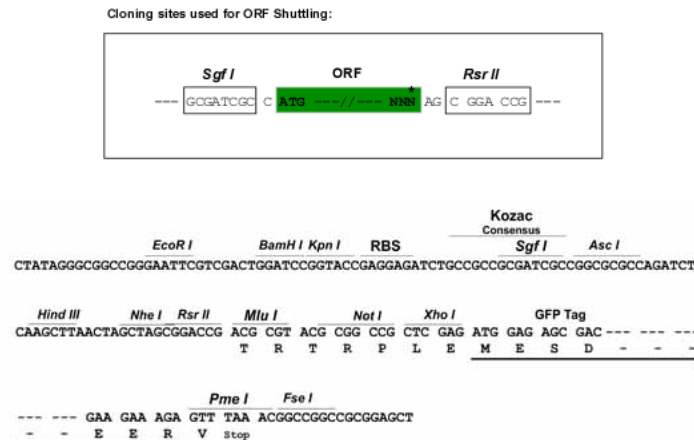
MELQPPEASIAVVSIPRQLPGSHSEAGVQGLSAGDDSELGSHCVAQTGLELLASGDPLPSASQNAEMIET
 GSDCVTQAGLQLASSDPPALASKNAEVTGTMQDTEVDMKEVELNELEPEKQPMNAASGAAMSLAGAEK
 NGLVKIKVAEDEAEAAAAAKFTGLSKEELLKVAGSPGWVRTRWALLLLFWLWLGMLAGAVVIVRAPRC
 RELPAQKWWHTGALYRIGDLQAFQGHGAGNLAGLKGRLDYLSLKVKGVLVGPVHKNQKDDVAQTDLLQI
 DPNFGSKEDFDSLLQSAAKKKSIRVILDLPNYRGENSEWFSQVDTVATKVKDALEFWLQAGVDGFQVRDI
 ENLKDASSFLAEWQNIITKGFSEDRLLIAGTNSSDLQQILSLLESNKDLLLTSSYLSDSGSTGEHTKSLVT
 QYLNATGNRWCSWSLSQARLLTSFLPAQLRLRYQLMLFTLPPTPVFSYGDEIGLDAAALPGQPMAPVML
 WDESSFPDIPGAVSANMTVKQSEDPSLLSLFRRLSDQRSKERSLLHGFHAFSAGPGLFSYIRHWDQN
 ERFLVVLNFGDVGLSAGLQASDLPASASLPAKADLLLSTQPGREEGSPLERLKLPEHEGLLLRFYPAA

SGPTRRRLE - GFP Tag - V

Restriction Sites:

Sgfl-RsrII

Cloning Scheme:



ACCN: NM_002394

ORF Size: 1890 bp

OTI Disclaimer: The molecular sequence of this clone aligns with the gene accession number as a point of reference only. However, individual transcript sequences of the same gene can differ through naturally occurring variations (e.g. polymorphisms), each with its own valid existence. This clone is substantially in agreement with the reference, but a complete review of all prevailing variants is recommended prior to use. [More info](#)

OTI Annotation: This clone was engineered to express the complete ORF with an expression tag. Expression varies depending on the nature of the gene.

Components: The ORF clone is ion-exchange column purified and shipped in a 2D barcoded Matrix tube containing 10ug of transfection-ready, dried plasmid DNA (reconstitute with 100 ul of water).

Reconstitution Method:

1. Centrifuge at 5,000xg for 5min.
2. Carefully open the tube and add 100ul of sterile water to dissolve the DNA.
3. Close the tube and incubate for 10 minutes at room temperature.
4. Briefly vortex the tube and then do a quick spin (less than 5000xg) to concentrate the liquid at the bottom.
5. Store the suspended plasmid at -20°C. The DNA is stable for at least one year from date of shipping when stored at -20°C.

RefSeq: [NM_002394.6](#)

RefSeq Size: 2315 bp

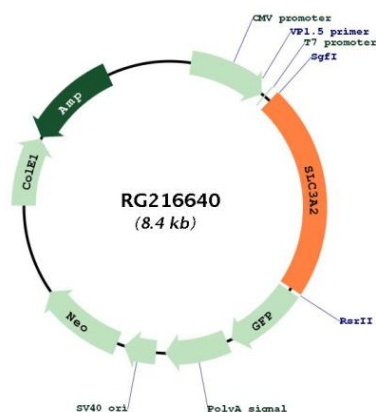
RefSeq ORF: 1893 bp

Locus ID: 6520

UniProt ID: [P08195](#)

Cytogenetics:	11q12.3
Domains:	alpha-amylase, Amy
Protein Families:	Transmembrane
Gene Summary:	This gene is a member of the solute carrier family and encodes a cell surface, transmembrane protein. The protein exists as the heavy chain of a heterodimer, covalently bound through di-sulfide bonds to one of several possible light chains. The encoded transporter plays a role in regulation of intracellular calcium levels and transports L-type amino acids. Alternatively spliced transcript variants, encoding different isoforms, have been characterized. [provided by RefSeq, Nov 2010]

Product images:



Circular map for RG216640