

Product datasheet for **RG216610**

TFAP2D (NM_172238) Human Tagged ORF Clone

Product data:

Product Type:	Expression Plasmids
Product Name:	TFAP2D (NM_172238) Human Tagged ORF Clone
Tag:	TurboGFP
Symbol:	TFAP2D
Synonyms:	TFAP2BL1
Mammalian Cell Selection:	Neomycin
Vector:	pCMV6-AC-GFP (PS100010)
E. coli Selection:	Ampicillin (100 ug/mL)



[View online »](#)

ORF Nucleotide Sequence:

>RG216610 representing NM_172238
 Red=Cloning site Blue=ORF Green=Tags(s)

TTTTGTAATACGACTCACTATAGGGCGGCCGGAATTCGTCGACTGGATCCGGTACCGAGGAGATCTGCC
 GCC**CGGATCGCC**

ATGTCAACTACCTTTCCGGGACTAGTCCACGATGCCGAGATACGTTACGACGGATCAAACAGCTACCGTT
 TGATGCAGCTTGCTGTCTGGAGTCAGTAGCCAATTCCTGTGCCTATTCTCTCTCTCTCTTTAAC
 TTACTCCACCACCGGCACCGAGTTTGCCTCCCTACTTCTCCACTAACCACCAGTACACCCCGCTCCAC
 CACCAGTCCTTCCATTACGAGTTTCAGCACAGCCACCCGGCCGTACCCCGACGCTACTCTCTGAACT
 CTCTTACCACCTCGAACAGTACTACCAGCAGATCCACCACGGGGAGCCACCGACTTTATTAACCTGCA
 CAATGCGCGGGCGCTCAAGTCGTCTGCCTGGACGAGCAGAGGGCGGGAGCTGGGCTGCCTCGATGCCTAC
 CGGCGCCATGACCTGTCCCTCATGAGCCATGGCTCTCAGTATGGAATGCACCCAGATCAAAGACTCTGC
 CAGGGCCCAACCTGGGGCTGGCCGCCGGGAGCAGACGACTTGCAGGGCTCTGTGGAGGCCAGTGTGG
 GCTTGTCTCAATGGCCAAGGTGGAGTGATAAAGAAGGTGGCACCTGTGTGGTCAACCCACAGACTTA
 TTTTGCTCTGTCCCTGGCCGTTTGTCCCTTCTAGTTCTACTTCCAAATACAAGGTGACCATTGCTGAGG
 TAAAGAGGCGCCTCTCCACCTGAGTGCTCAATGCTTCACTCTTGGGAGGCATTTTGAGAAGAGCAAA
 ATCAAAGAATGGGGCCGCTGCCTGAGAGAGAAATGGATAGGCTTGGCTTAAACTTACCAGCAGGAAGA
 CGGAAAGCAGCTAATGTCACCCTCTTACTTCTTGGTTGAAGGGGAGGCTTGGCACTTGGCTCGGGATT
 TTGGCTACACTTGTGAACAGAGTTTCCAGCCAAAGCAGTAGGAGAACATCTTCCAGACAACATATGGA
 ACAGAAAGAACAGACAGCAAGAAAAAGATGATCCTGGCGACCAAAACAACTGTAAAGAATCCAAGAC
 CTCTTGAGCCAAAGATAGATCACCCTGGGATCCTCCAGACCCACTCCAATTCTAGACCTTGACATCCAGA
 GACATTTAACACATTTTCAGTTTGCATCACTATGGCTTTGGGACTCCGGCAATATGTGCAGCTAAGCAC
 TTTCCAAACAGTTCTCAGTGAAATGCTGAACTACTTGGAAAAACACACTACTCACAAAGACGGCGGAGCG
 GCGGATTCTGGCCAAGGACATGCCAACTCGGAGAAAGCTCCCCTGCGGAAAACCTCAGAGGCTGCCGTGA
 AAGAGGGCAAAACAGAAAAGACAGAC

ACGCGTACGCGGCCGCTCGAG - GFP Tag - GTTTAA

Protein Sequence:

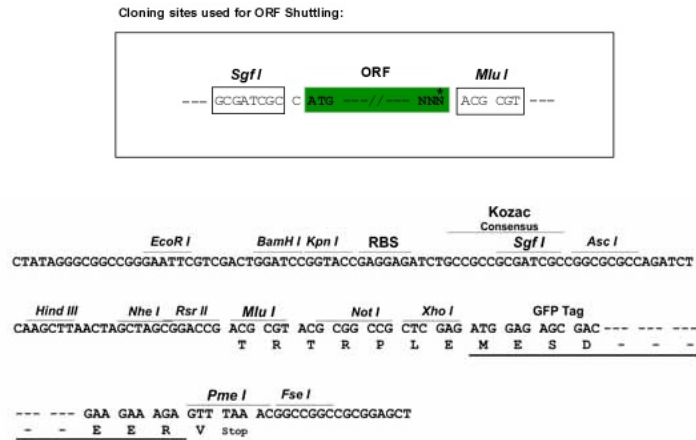
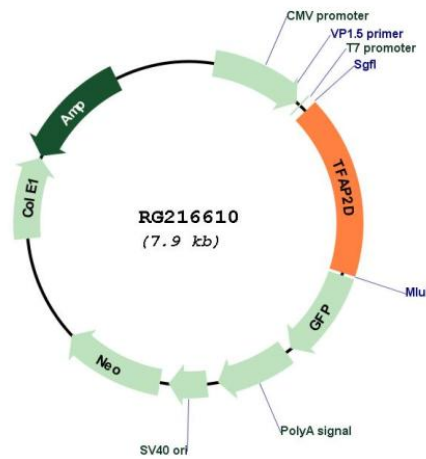
>RG216610 representing NM_172238
 Red=Cloning site Green=Tags(s)

MSTTFPGLVHDAEIRYDGSNSYRLMQLGCLESVANSTVAYSSSSPLTYSTTGTEFASPYFSTNHQYTPLH
 HQSFHYEFQHSHPAVTPDAYSLNSLHHSQQYYQIHHGEPTDFINLHNARALKSSCLDEQRRELGLCLDAY
 RRHDL SLM SHGSQYGMHPDQRLLP GPNLGLAAAGADDLQGSVEAQCGLV L NQGGVIRRGTCVVNPTDL
 FCSVPGRL SLLSSTSKYKVTIAEVKRR LSPPECLNASLLGGILRRAKSKNGGRCLREKLDRLGLNLPAGR
 RKAANVTLTSLVEGEALHLARDFGYTCETEFPAKAVGEHLARQHMEQKEQTARKKMILATKQICKQEFQD
 LLSQDRSPLGSSRPTPILDLDIQRHLTHFSLITHGFGTPAICAALSTFQT V LSEMLNYLEKHTTHKNGGA
 ADSGQGHANSEKAPLRKTSEAAVKEGKTEKTD

TRTRPLE - GFP Tag - V

Restriction Sites:

Sgfl-MluI

Cloning Scheme:

Plasmid Map:


ACCN: NM_172238

ORF Size: 1356 bp

OTI Disclaimer: The molecular sequence of this clone aligns with the gene accession number as a point of reference only. However, individual transcript sequences of the same gene can differ through naturally occurring variations (e.g. polymorphisms), each with its own valid existence. This clone is substantially in agreement with the reference, but a complete review of all prevailing variants is recommended prior to use. [More info](#)

OTI Annotation: This clone was engineered to express the complete ORF with an expression tag. Expression varies depending on the nature of the gene.

Components:	The ORF clone is ion-exchange column purified and shipped in a 2D barcoded Matrix tube containing 10ug of transfection-ready, dried plasmid DNA (reconstitute with 100 ul of water).
Reconstitution Method:	<ol style="list-style-type: none">1. Centrifuge at 5,000xg for 5min.2. Carefully open the tube and add 100ul of sterile water to dissolve the DNA.3. Close the tube and incubate for 10 minutes at room temperature.4. Briefly vortex the tube and then do a quick spin (less than 5000xg) to concentrate the liquid at the bottom.5. Store the suspended plasmid at -20°C. The DNA is stable for at least one year from date of shipping when stored at -20°C.
RefSeq:	NM_172238.2
RefSeq Size:	2040 bp
RefSeq ORF:	1359 bp
Locus ID:	83741
UniProt ID:	Q7Z6R9
Cytogenetics:	6p12.3
Protein Families:	Transcription Factors
Gene Summary:	Sequence-specific DNA-binding protein that interacts with inducible viral and cellular enhancer elements to regulate transcription of selected genes. AP-2 factors bind to the consensus sequence 5'-GCCNNNGGC-3' and activate genes involved in a large spectrum of important biological functions including proper eye, face, body wall, limb and neural tube development. They also suppress a number of genes including MCAM/MUC18, C/EBP alpha and MYC (By similarity).[UniProtKB/Swiss-Prot Function]