

Product datasheet for **RG216606**

MYO10 (NM_012334) Human Tagged ORF Clone

Product data:

Product Type:	Expression Plasmids
Product Name:	MYO10 (NM_012334) Human Tagged ORF Clone
Tag:	TurboGFP
Symbol:	MYO10
Mammalian Cell Selection:	Neomycin
Vector:	pCMV6-AC-GFP (PS100010)
E. coli Selection:	Ampicillin (100 ug/mL)
ORF Nucleotide Sequence:	>RG216606 representing NM_012334 Red=Cloning site Blue=ORF Green=Tags(s)

TTTTGTAATACGACTCACTATAGGGCGGCCGGAATTCGTCGACTGGATCCGGTACCGAGGAGATCTGCC
GCC**CGATCGCC**

ATGGATAACTTCTTCACCGAGGGAACACGGGTCTGGCTGAGAGAAAATGGCCAGCATTTTCCAAGTACTG
TAAATTCCTGTGCAGAAGGCATCGTCGTCTCCGGACAGACTATGGTCAGGTATTCACCTACAAGCAGAG
CACAATTACCCACCAGAAGGTGACTGCTATGCACCCACGAACGAGGAGGGCGTGGATGACATGGCGTCC
TTGACAGAGCTCCATGGCGGCTCCATCATGTATAACTTATTCCAGCGGTATAAGAGAAATCAAATATATA
CCTACATCGGCTCCATCCTGGCCTCCGTGAACCCCTACCAGCCCATCGCCGGGCTGACGAGCTGCCAC
CATGGAGCAGTACAGCCGGCCACCTGGGCGAGCTGCCCCGCACATCTTCGCCATCGCCAACGAGTGC
TACCGCTGCCTGTGGAAGCGCTACGACAACAGTGCATCCTCATCAGTGGTAAAAGTGGGCGAGTAAAA
CCGAAAGCACTAAATTGATCCTCAAGTTTCTGTCACTCATCAGTCAACAGTCTTTGGAATTGTCCTTAA
GGAGAAGACATCCTGTGTGAACGAGCTATTCTTGAAAGCAGCCCATCATGGAAGCTTTCGGCAATGCG
AAGACCGTGTACAACAACAACCTAGTCGCTTTGGGAAGTTTGTTCAGCTGAACATCTGTCAGAAAAGGAA
ATATTCAGGGCGGAGAATTGTAGATTATTTATTAGAAAAAACCGAGTAGTAAGCAAAATCCCGGGGA
AAGGAATTATCACATATTTTATGCACTGCTGCCAGGGCTGGAACATGAAGAAAGAGAAGAATTTATTTA
TCTACGCCAGAAAACCTACTACTTGAATCAGTCTGGATGTGTAGAAGACAAGACAATCAGTGACCAGG
AATCCTTTAGGGAAGTTATTACGGCAATGGACGTGATGCAGTTCAGCAAGGAGGAAGTTCGGGAAGTGC
GAGGCTGCTTGTGTTACTGTCATCTTGGGAACATAGAATTTATCACTGCTGGTGGGCGACAGTTTCC
TTCAAAACAGCTTTGGGCGAGATCTGCGGAGTACTTGGGCTGGACCCAACACAGCTCACAGATGCTTTGA
CCCAGAGATCAATGTTTCTCAGGGGAGAAGAGATCCTCACGCCTCTCAATGTTCAACAGGCAAGTAGACAG
CAGGGACTCCCTGGCCATGGCTCTGTATGCGTGTCTTTGAGTGGGTAATCAAGAAGATCAACAGCAGG
ATCAAAGCAATGAGGACTTCAAGTCTATTGGCATCCTCGACATCTTTGGATTTGAAAACCTTTGAGGTTA
ATCACTTTGAACAGTTCAATATAAACTATGCAAACGAGAACTTCAGGAGTACTTCAACAAGCATAATTTT
TTCTTTAGAACAACTAGAATATAGCCGGGAAGGATTAGTGTGGGAAGATATTGACTGGATAGCAATGGA
GAATGCCTGGACTTGATTGAGAAGAACTTGGCCTCCTAGCCCTTATCAATGAAGAAAGCCATTTTCCTC
AAGCCACAGACAGCACCTTATTGGAGAAGCTACACAGTCAGCATGCGAATAACCACCTTTTATGTGAAGCC



[View online >](#)

CAGAGTTGCAGTTAACAAATTTGGAGTGAAGCACTATGCTGGAGAGGTGCAATATGATGTCCGAGGTATC
 TTGGAGAAGAACAGAGATACATTTTCAGATGACCTTCTCAATTTGCTAAGAGAAAGCCGATTTGACTTTA
 TCTACGATCTTTTTGAACATGTTTCAAGCCGCAACAACCAGGATACCTTGAATGTGGAAGCAAACATCG
 GCGGCCTACAGTCAGCTCACAGTTCAAGGACTCACTGCATTCTTAATGGCAACGCTAAGCTCCTCTAAT
 CCTTTCTTTGTTTCGCTGTATCAAGCCAAACATGCAGAAGATGCCAGACCAGTTTGACCAGGCGGTTGTGC
 TGAACCAGCTGCGGTACTCAGGGATGCTGGAGACTGTGAGAATCCGCAAAGCTGGGTATGCGGTCCGAAG
 ACCCTTTCAGACTTTTACAAAAGGTATAAAGTGTCTGATGAGGAATCTGGCTCTGCCTGAGGACGTCGGA
 GGGAAAGTGCACGAGCCTGCTGCAGCTCTATGATGCCTCCAACAGCGAGTGGCAGCTGGGGAAAGACCAAGG
 TCTTTCTTCGAGAATCCTTGGAACAGAACTGGAGAAGCGGAGGGAAAGAGGAAGTGAAGCCACGCGCCAT
 GGTGATTCGCGCCATGTCTTGCGCTTCTTAGCACGAAAAACAATACAGAAAGGTCCTTTATTGTGTGGTG
 ATAATACAGAAGAATTACAGAGCATTCTTCTGAGGAGGAGATTTTTGCACCTGAAAAAGGCAGCCATAG
 TTTTCCAGAAGCAACTCAGAGGTCAGATTGCTCGGAGAGTTTACAGACAATTGCTGGCAGAGAAAAGGGA
 GCAAGAAGAAAAGAAGAAACAGGAAGAGGAAGAAAAGAAGAAACGGGAGGAAGAAGAAAAGAGAGAG
 AGAGAGCGAAGAGAAGCCGAGCTCCGCGCCAGCAGGAAGAAGAAACGAGGAAGCAGCAAGAAGCTGAAG
 CCTTGCAGAAGAGCCAGAAGGAAGCTGAACTGACCCGTGAACTGGAGAAAAGAAAGAAAATAAGCAGGT
 GGAAGAGATCCTCCGCTGGAGAAAAGAAATCGAGGACCTGCAGCCATGAAGGAGCAGCAGGAGCTGTCG
 CTGACCGAGGCTTCCCTGCAGAAGCTGCAGGAGCGGCGGACCAGGAGCTCCGACGGCTGGAGGAGGAAG
 CGTGCAGGGCGGCCAGGAGTTCCTCGAGTCCCTCAATTTTCGACGAGATCGACGAGTGTGTCCGGAATAT
 CGAGCGGTCCCTGTGCGTGGGAAGCGAATTTCCAGCGAGCTGGCTGAGAGCGCATGCGAGGAGAAGCCC
 AACTTCAACTTCAGCCAGCCCTACCCAGAGGAGGAGGTGATGAGGGCTTCAAGCCGACGACGACGCGCT
 TCAAGGACTCCCCAACCCAGCGAGCAGCGCCACTCAGACCAGCGAACAAGTGGCATCCGACAGCGA
 TGACTCTCAGAGGAGGACCCATACATGAACGACACGGTGGTCCCACCAGCCCCAGTCCGACAGCAGC
 GTGCTGCTCGCCCATCAGTGCAGGACTCCGGAGCCTACACAACCTCTCCAGCGCGGACTCCACCTACT
 GCATGCCCCAGAACGCTGGGGACTTGCCCTCCCCAGACGGCGACTACGACTACGACCAGGATGACTATGA
 GGACGGTGCCATCACTTCCGGCAGCAGCGTGACCTTCTCAACTCCTACGGCAGCCAGTGGTCCCCCGAC
 TACCGTCTCTGTGGGACCTACAACAGCTCGGGTGCCTACCGTTTCAGCTCTGAGGGGGCGCAGTCTCT
 CGTTTGAAGATAGTGAAGAGGACTTTGATTCCAGGTTTGATACAGATGATGAGCTTTTCAACCGCGTGA
 CTCTGTGTACAGCTGTGTCACTCTGCCGATTTCCACAGCTTTCTGTACATGAAAGGTGGCTGATGAAC
 TCTTGGAAACGCCGCTGGTGCCTCAAGGATGAAACCTTCTGTGGTCCGCTCCAAGCAGGAGGCC
 TCAAGCAAGGCTGGCTCCAAAAAAGGGGGGGCTCCTCCACGCTGTCCAGGAGAAATTGGAAGAAGCG
 CTGGTTTGTCTCCGCCAGTCCAAGCTGATGTACTTTGAAAACGACAGCGAGGAGAACTCAAGGGCACC
 GTAGAAGTGCAGCGCAAAAGAGATCATAGATAACACCACCAAGGAGAAATGGGATCGACATCATTATGG
 CCGATAGGACTTTCCACCTGATTGCAGAGTCCCCAGAAGATGCCAGCCAGTGGTTCAGCGTGTCTGAGTCA
 GGTCCACGCGTCCACGGACCAGGAGATCCAGGAGATGCATGATGAGCAGGCAAACCCACAGAATGTGTG
 GGCACCTTGGATGTGGGGCTGATTGATTCTGTGTGTCCTCTGACAGCCCTGATAGACCCAACTCGTTTG
 TGATCATCACGGCCAACCGGGTGTGCACTGCAACGCCGACACGCCGGAGGAGATGCACCACTGGATAAC
 CCTGCTGCAGAGGTCAAAGGGGACACCAGAGTGGAGGGCCAGGAATTCATCGTGAGAGGATGGTTGCAC
 AAAGAGGTGAAGAACAGTCCGAAGATGTCTTCACTGAAACTGAAGAAACGGTGGTTGTACTCACCACA
 ATTCCCTGGATTACTACAAGAGTTCAGAGAAGAACGCGCTCAAACCTGGGGACCCTGGTCTCAACAGCCT
 CTGCTCTGTCTCCCCCAGATGAGAAGATATTCAAAGAGACAGGCTACTGGAACGTACCCTGTACGCGG
 CGCAAGCACTGTTACCGCTCTACACCAAGCTGCTCAACGAGGCCACCCGGTGGTCCAGTGCATTCAA
 ACGTGACTGACACCAAGGCCCGATCGACACCCCAACCCAGCAGCTGATTCAAGATATCAAGGAGAAGT
 CCTGAACTCGGATGTGGTGAACAGATTTACAAGCGGAACCCGATCCTTCGATACACCCATACCCCTTG
 CACTCCCCGCTCTGCCCTTCCGTATGGGGACATAAATCTCAACTTGCTCAAAGACAAAGGCTATACCA
 CCCTTCAGGATGAGGCCATCAAGATATTCAATTCCTGCAGCAACTGGAGTCCATGTCTGACCCAATTCC
 AATAATCCAGGGCATCTACAGACAGGGCATGACCTGCGACCTCTGCGGGACGAGCTGTACTGCCAGCTT
 ATCAAACAGACCAACAAAGTGGCCACCCCGCAGTGTGGCAACCTGTACAGCTGGCAGATCCTGACAT
 GCCTGAGCTGCACCTTCTGCCGAGTTCGAGGGATTCTCAAGTATCTCAAGTTCATCTGAAAAGGATACG
 GGAACAGTTTCCAGGAACCGAGATGAAAAATACGCTCTCTTCACTTACGAATCTCTTAAGAAAACCAAA
 TGCCGAGAGTTTGTGCTTCCCAGATGAAATAGAAGCTCTGATCCACAGGCAGGAAATGACATCCACGG
 TCTATTGCCATGGCGGGCTCTGCAAGATCACCATCAACTCCCACACCACTGCTGGGGAGGTGGTGA
 GAAGCTGATCCGAGGCTGGCCATGGAGGACAGCAGGAACATGTTTGCTTTGTTGAATACAACGGCCAC

GTCGACAAAGCCATTGAAAGTCGAACCGTCGTAGCTGATGTCTTAGCCAAGTTTAAAAAGCTGGCTGCCA
 CATCCGAGGTTGGGGACCTGCCATGAAATTTACTTCAAACCTTTACTGCTTCTGGACACAGACAAACGT
 GCCAAAAGACAGTGTGGAGTTTGACATTTATGTTTGAACAGGCCACGAAGCGGTTATCCATGGCCACCAT
 CCAGCCCCGGAAGAAAACCTCCAGGTTCTTGTCTGCCCTGCGACTCCAGTATCTGCAGGGGATTATACTC
 TGCACGCTGCCATCCCACCTCTCGAAGAGGTTTATCCCTGCAGAGACTCAAGGCCCGCATCAGCCAGTC
 AACCAAAACCTTCACCCCTTGTGAACGGCTGGAGAAGAGGCGGACGAGCTTCTAGAGGGGACCCCTGAGG
 CGGAGCTTCCGGACAGGATCCGTGGTCCGGCAGAAGGTCGAGGAGGAGCAGATGCTGGACATGTGGATTA
 AGGAAGAAGTCTCTCTGCTCGAGCCAGTACATTGACAAGTGGAGGAAATTTTCAGGGAATGAACCAGGA
 ACAGGCCATGGCCAAGTACATGGCCTTGATCAAGGAGTGGCCTGGCTATGGCTCGACGCTGTTTGTATGTG
 GAGTGAAGGAAGGTGGCTTCCCTCAGGAACCTCTGGTTGGGTGTCAGCGCGGACGCCCTCCGCTTACA
 AGCGTGGAGAGGGAAGACCCTGGAAGTCTTCCAGTATGAACACATCCTCTCTTTTGGGGACCCCTGGC
 GAATACGTATAAGATCGTGGTGCATGAGAGGGAGCTGCTCTTTGAAACCAGTGAAGTGGTGGATGTGGCC
 AAGCTCATGAAAGCCTACATCAGCATGATCGTGAAGAAGCGCTACAGCACGACACGCTCCGCCAGCAGCC
 AGGGCAGCTCCAGG

ACGCGGCCGCTCGAG - GFP Tag - GTTTAA

Protein Sequence:

>RG216606 representing NM_012334
 Red=Cloning site Green=Tags(s)

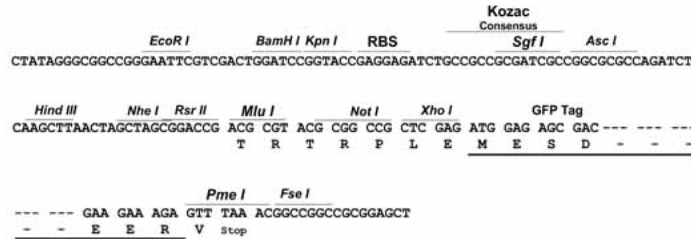
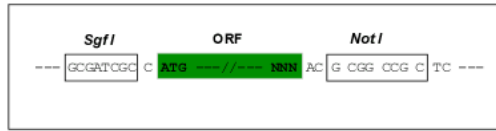
MDNFFTEGTRVWLRENGQHPSTVNSCAEGIVVFRFDYGVVFTYKQSTITHQKVTAMHPTNEEGVDDMAS
 LTELHGGSIMYNLFQRYKRNQIYTYIGSILASVNPYQPIAGLYEPATMEQYSRRHLGELPPHIFAIANEC
 YRCLWKRYDNQCILISGESGAGKTESTKILKFLSVISQQSLELSLKEKTSCEVERAILESSPIMEAFGNA
 KTYVNNNSRFGKVFQNLNICQKGNIQGGRIVDYLLEKNRVVRQNPGERNYHIFYALLAGLEHEEREEFYL
 STPENYHYLNQSGVEDKTIISDQESFREVIAMDMVMQFSKEEVREVSRLLAGILHLGNIEFITAGGAQVS
 FKALGRSAELLGLDPTQLTDALQSRMFLRGEEILTPLNVQAVDSRDSLAMALYACCFEWVIKINSR
 IKGNEDFKSIGILDIFGFENFEVNHFEQFNINYANEKLEQYFNKHIFSLQLEYSREGLVWEDIDWIDNG
 ECLDLIEKKLGLLALINEESHFPQATDSTLLEKLHSQHANNHFYKPRVAVNNFVVKHYAGEVQYDVRGI
 LEKNRDTFRDDLNLRESRDFIYDLFEHVSSRNQDTLCKGSKHRRPTVSSQFKDSLHSLMATLSSSN
 PFFVRCIKPNMQMPDQFQAVVLNQLRYSGMLETVRIRKAGYAVRRPFQDFYKRYKVLMRNLALPEDVR
 GKCTSLQLYDASNSEWQLGKTKVFLRESLEQKLEKRREEEVSHAAMVIRAHVLFGLARKQYRKVLYCVV
 IIQKNYRAFLRRRFLHLKKAIVFQKQLRGQIARRVYRQLLAEKREQEEKKQEEEEKKKREEERERE
 RERREAELRAQQEEETRQQEELEALQKSQKEAELTRELEKQKENKQVEEILRLEKEIEDLQRMKEQQELS
 LTEASLQKLQERRDQELRREEEACRAAQEFLESLENFDEIDECVRNIERSLSVGSEFSSELAESACEEK
 NFNFSQPYPEEEVDEGFEADDDAFKDSNPSEHGSDQRTSGIRTSDDSEEDPYMNDTVVPTSPSADST
 VLLAPSVQDSGSLHNSSSGESTYCMPQNAGDLSPDGDYDYDQDDYEDGAIITSGSSVTFNSYGSQWSPD
 YRCSVGTYNSSGAYRFSSEGAQSSFEDSEEDFDSRFDTDELSYRRDSVYSCVTLPHYFHSFLYMKGGLMN
 SWKRRWCVLKDETFLWFRSKQEALKQGWLHKKGGGSSLSRRNWKRWFLRQSKLMYFENDSEEKLG
 VEVRTAKEIIDNTTKENGIDIIMADRTFHLLIAESPEDASQWFSVLSQVHASTDQEIQEMHDEQANPQNAV
 GTLDVGLIDSVCASDSPDRPNSFVIIITANRVLHCNADTPEEMHHWITLLQRSKGDRVEGQEFIVRGWLH
 KEVKNSPKMSSLKLRWFVLTNLSLDYKSSEKNALKLGTLLVNSLCSVVPDEKIFKETGYWNVTVYG
 RKHCYRLYTKLLNEATRWSAIVNTDTKAPIDTPTQQLIQDIKENCLNSDVVEQIYKRNPIILRYTHHPL
 HSPLLPLPYGDINLNLKDKGYTTLQDEAIKIFNSLQQLLESMSPPIIIQGIQTGHDLRPLRDELQYCL
 IKQTNKVPHPGVSQNLVSWQILTCLSCTFLPSRGILKYLKFLKRIREQFPGTEMEKYALFTYESLKTK
 CREFVPSRDEIEALIHRQEMTSTVYCHGGGSKITINSHTTAGEVVEKLIRGLAMEDSRNMFALFEYNHGH
 VDKAIESRTVVADVLAKFEKLAATSEVGDLPWKFYFKLYCFLDTDNVPKDSVEFAFMFEQAHEAVIHGH
 PAPEENLQVLAALRLQYLQGDYTLHAAIPPLEEYVSLQRLKARISQSTKFTPCERLEKRRTSFLEGTLR
 RSRFTGVSVVRQKVEEQMLDMWIKKEVSSARASIIDKWRKFQGMNQEAMAKYMALIKEWPGYGSTLFDV
 ECKEGGFPQELWLGVSADAVSVYKRGEGRPLEVFQYEHILSFGAPLANTYKIVVDERELLFETSEVVDVA
 KLMKAYISMIVKKRYSTTRSASSQGSSR

TRPLE - GFP Tag - V

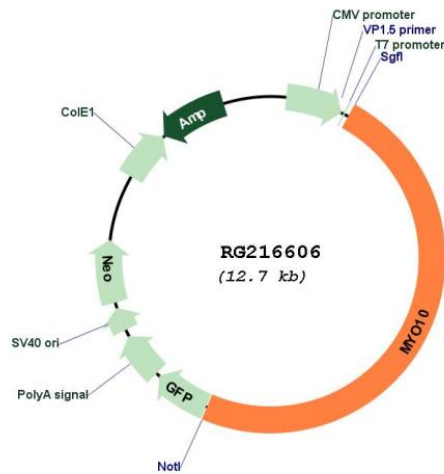
Restriction Sites: SgfI-NotI

Cloning Scheme:

Cloning sites used for ORF Shuttling:



Plasmid Map:



ACCN: NM_012334

ORF Size: 6174 bp

OTI Disclaimer: The molecular sequence of this clone aligns with the gene accession number as a point of reference only. However, individual transcript sequences of the same gene can differ through naturally occurring variations (e.g. polymorphisms), each with its own valid existence. This clone is substantially in agreement with the reference, but a complete review of all prevailing variants is recommended prior to use. [More info](#)

OTI Annotation: This clone was engineered to express the complete ORF with an expression tag. Expression varies depending on the nature of the gene.

Components:	The ORF clone is ion-exchange column purified and shipped in a 2D barcoded Matrix tube containing 10ug of transfection-ready, dried plasmid DNA (reconstitute with 100 ul of water).
Reconstitution Method:	<ol style="list-style-type: none">1. Centrifuge at 5,000xg for 5min.2. Carefully open the tube and add 100ul of sterile water to dissolve the DNA.3. Close the tube and incubate for 10 minutes at room temperature.4. Briefly vortex the tube and then do a quick spin (less than 5000xg) to concentrate the liquid at the bottom.5. Store the suspended plasmid at -20°C. The DNA is stable for at least one year from date of shipping when stored at -20°C.
RefSeq:	<u>NM_012334.1</u> , <u>NP_036466.1</u>
RefSeq Size:	7787 bp
RefSeq ORF:	6177 bp
Locus ID:	4651
UniProt ID:	<u>Q9HD67</u>
Cytogenetics:	5p15.1
Domains:	IQ, B41, MyTH4, myosin_head, PH
Protein Pathways:	Fc gamma R-mediated phagocytosis
Gene Summary:	This gene encodes a member of the myosin superfamily. The protein represents an unconventional myosin; it should not be confused with the conventional non-muscle myosin-10 (MYH10). Unconventional myosins contain the basic domains of conventional myosins and are further distinguished from class members by their tail domains. This gene functions as an actin-based molecular motor and plays a role in integration of F-actin and microtubule cytoskeletons during meiosis. [provided by RefSeq, Dec 2011]