

Product datasheet for **RG216593**

SCARF1 (NM_145352) Human Tagged ORF Clone

Product data:

Product Type:	Expression Plasmids
Product Name:	SCARF1 (NM_145352) Human Tagged ORF Clone
Tag:	TurboGFP
Symbol:	SCARF1
Synonyms:	SREC; SREC-I; SREC1
Mammalian Cell Selection:	Neomycin
Vector:	pCMV6-AC-GFP (PS100010)
E. coli Selection:	Ampicillin (100 ug/mL)



[View online »](#)

ORF Nucleotide
Sequence:

>RG216593 representing NM_145352
Red=Cloning site Blue=ORF Green=Tags(s)

TTTTGTAATACGACTCACTATAGGGCGGCCGGAATTCGTCGACTGGATCCGGTACCGAGGAGATCTGCC
GCC**CGGATCGCC**

ATGGGGCTGGGGCTGCTGCTCCCCTGCTGCTGCTCTGGACTCGGGGACTCAGGGTCCGAGCTGGACC
CCAAAGGCAGCACGTCTGTGTGCCAGCAGCCCTCTGCTGAGCTGCAGTGTGCGCAGGCTGGAGGCA
GAAGGATCAAGAATGCACCATCCCCATCTGTGAGGGGCCGGACGCCTGCCAGAAAGACGAGGTGTGTGTG
AAGCCGGGCTCTGTCGATGCAAGCCTGGATTCTTTGGGGCCACTGCAGCTCCCCTGCCCGGGCCAGT
ACTGGGGCCCGACTGCCGTGAGAGCTGCCCTGCCACCCGCACGGCCAGTGCAGCCAGCCACGGGCGC
GTGCCAGTGCCAGGCCGACCGCTGGGGAGCCCGCTGCGAGTTCCTGTCGCTGCCGCCCCACGGGCGC
TGCGACCCCGCGACCGCGTGTGCCACTGCGAACCAGGCTGGTGGTGTCCACGTGCCGCCGCCGTGCC
AGTGCAACACCGCGCGCGCTGCGAGCAGGCCACGGGCGCTGCGTGTGCAAGCCGGCTGGTGGGG
GGCCCGCTGCAGCTTCCGCTGCAACTGCCACGGCTCCCGTGCAGCAGGACTCCGGCCGCTGCGCTGC
CGGCCGGCTGGTGGGGTCCCGAATGCCAGCAGAGTGCAGTGTGTGCGGGGCCCTGCAGCGCCGCT
CCGGCGAGTGACCTGCCCGCCGGCTTCCGCGGAGCGCGCTGCGAGCTGCCCTGCCCGGACGGCAGCCA
CGGGGTGCACTGCGCACACAGCTGTGGCCGCTGCAAAACAATGAGCCGTGCTCTCCAGACACAGGCAGC
TGTGAGTCTGCGAGCCGGGCTGGAACGGGACCCAGTGCAGCAGCCCTGCCTGCCACCTTTGGCG
AGAGCTGCGAACAGCAGTGCCTCACTGCCGACATGGGGAGGCCCTGTGAGCCAGATACTGGCCACTGTCA
GCCAGGCTCTGGCAGTCGGGACACTGCCCTCATCGCGGCAGCCCTGTGCCTCTGCTGCTCTTCCCTG
GGCCTTGCTGTGCTGCTGCTGCTGGGCCCCCGATCAGACCTCAAGGACAGGCCAGCGAGAGATG
CGTTCCCTCAGCTCCCAAGCTACCCTGGGTGACAGTCTCACATCACGACCCGGAGGTCCCTTCAAC
CACAGTTCATCGAGCCGCCCTGCGCGCTGGGCCACTGATGACTCCTTCTCATCCGATCCTGAGTCTG
GAGAGGCAGATGAGGTTCTGCCTACTGTGTGCCACCCCAAGAAGGGATGGTCCCTGTGGCCAGGCAGG
GTCGTGAGAGGCCAGCCTGGCTGCAGGTGCTTCCCGCCCTGAGGACGCCTCCACGCCATTGCCATC
CCGCGCACCTCCAGCCTAGCTCGGGCAAGCGGCCATCGGTCTCCTTCCGGAAGGTACCAAGTTTGCAC
CACAGAGTCGCCAAGCTCAGGGGAGCTCTCCAGCCGCTCCGAAAGCCCAAGAGGCTCTCCGGGGGGC
GCAGTCGGGTCTGAGGGCCGGGAAGCCGAAGAGTCCACAGGCCAGAGGAAGCAGAAGCCCGGAGTCC
TTCCGGCGGCTGCCAGTCCCGGGATTACGCCACTGGCCACCGCGGCCCCACTTGGTGGCCGGACAG
TGGCTGAGCACGTGGAAGCCATTGAGGGCAGCGTCCAGGAGAGCTCGGGCCCTGTGACCAGGATCTACAT
GCTGGCAGGGAAGCCCGCGGATCCGAAGGCCCTGTCCGCTCTGTCTTCCGCCATTTTGGTAGCTTCCAG
AAAGGCCAGGCGGAAGCCAAGGTCAAGAGGGCCATCCCTAAGCCCTCCGCGCCAGGCCCTGAATCGAAAA
AGGGCAGCCCTGGCCTTGCTCTGGCTCTGTGCGCCAGAGCCCAACTCAGCCCCAAAAGCTGGGCTTCC
TGGGGCCACAGGGCCTATGGCAGTCAGACCAGAGGAAGCGGTCCGGGGCTGGGGCTGGCACCGAGAGT
TCAAGGAGAGCCAGGAGCCAGTCTCTGGCTGTGGCTCCCGAAGACAGGATCCCGAAGCAGGCTGAAG
AGGAAAGCAGGAGGAACCTGAGTATGAGAATGTTGTACCCATCTCCAGGCCACCAGAACC

ACGCGTACGCGGCCGCTCGAG - GFP Tag - GTTTAA

Protein Sequence: >RG216593 representing NM_145352
Red=Cloning site Green=Tags(s)

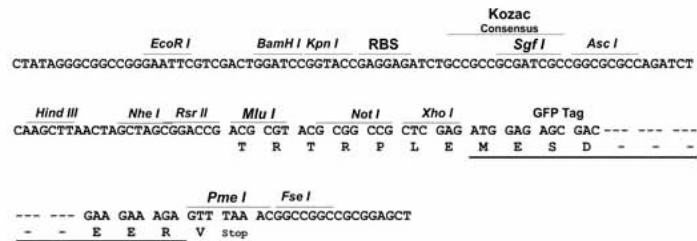
```
MGLGLLLPLLLLWTRGTQGSSELDPKGQHVCAVSSPSAELQCCAGWRQKDQECTIPICEGPDACQKDEVCV
KPGLCRCKPGFFGAHCSSRCPGQYWGPDCRESCPHPHGQCEPATGACQCQADRWGARCEFPACGPHGR
CDPATGVCHCEPGWSSTCRRPCQCNTAAARCEQATGACVCKPGWWRRCFRNCNCHGSPCEQDSGRCAC
RPGWWGPECQQQCECVRGRCSAASGECTCPPGFRGARCELPCPAGSHGVQCAHSCGRCKHNEPCSPDTGS
CESCEPGWNGTQCQQPCLPGTFGESCEQQCPHCRHGEACEPDTGHCQPGSGSRDTALIAGSLVPLLLLFL
GLACCACCCWAPRSDLKDRPARDGATVSRMKLQVWGTLTSLGSTLPCRSLSSHKL PWVTVSHHDPEVPFN
HSFIEPPSAGWATDDSFSSDPESGEADEVPAYCVPPQEGMVPVAQGSSEASLAAGAFPPPEDASTPFAI
PRTSSLARAKRPSVSFAEGTKFAPQSRSSGELSSPLRKPRLSRGAQSGPEGREAEESTGPEEAEAPES
FPAAASPGDSATGHRPPLGGRTVAEHVEAIEGSVQESSGPVTTIYMLAGKPRGSEGPVRSVFRHFGSFQ
KGQAEAKVKRAIPKPPRQALNRKKGSPGLASGSGVQSPNSAPKAGLPGATGPMAVRPEEAVRGLGAGTES
SRRAQEPVSGCGSPEQDPQKQAEERQEPEYENVVPI SRPPEP
```

TRTRPLE - GFP Tag - V

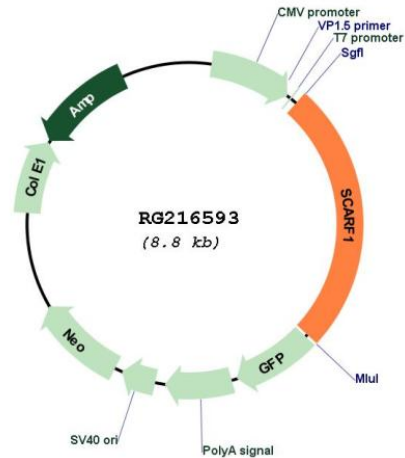
Restriction Sites: SgfI-MluI

Cloning Scheme:

Cloning sites used for ORF Shutting:



Plasmid Map:



ACCN: NM_145352

ORF Size: 2232 bp

OTI Disclaimer: The molecular sequence of this clone aligns with the gene accession number as a point of reference only. However, individual transcript sequences of the same gene can differ through naturally occurring variations (e.g. polymorphisms), each with its own valid existence. This clone is substantially in agreement with the reference, but a complete review of all prevailing variants is recommended prior to use. [More info](#)

OTI Annotation: This clone was engineered to express the complete ORF with an expression tag. Expression varies depending on the nature of the gene.

Components: The ORF clone is ion-exchange column purified and shipped in a 2D barcoded Matrix tube containing 10ug of transfection-ready, dried plasmid DNA (reconstitute with 100 ul of water).

Reconstitution Method:

1. Centrifuge at 5,000xg for 5min.
2. Carefully open the tube and add 100ul of sterile water to dissolve the DNA.
3. Close the tube and incubate for 10 minutes at room temperature.
4. Briefly vortex the tube and then do a quick spin (less than 5000xg) to concentrate the liquid at the bottom.
5. Store the suspended plasmid at -20°C. The DNA is stable for at least one year from date of shipping when stored at -20°C.

RefSeq: [NM_145352.1](#), [NP_663327.1](#)

RefSeq Size: 3199 bp

RefSeq ORF: 2234 bp

Locus ID: 8578

Cytogenetics: 17p13.3

Protein Families: Druggable Genome

Gene Summary: The protein encoded by this gene is a scavenger receptor that is expressed in endothelial cells. It regulates the uptake of chemically modified low density lipoproteins, including acetylated low density lipoprotein (Ac-LDL), and it may be involved in atherogenesis. This gene is regulated by the transcription factors ZNF444/EZF-2 and SP1. Alternative splicing results in multiple transcript variants. [provided by RefSeq, Apr 2013]