

Product datasheet for **RG216578**

NCKAP1 (NM_205842) Human Tagged ORF Clone

Product data:

Product Type:	Expression Plasmids
Product Name:	NCKAP1 (NM_205842) Human Tagged ORF Clone
Tag:	TurboGFP
Symbol:	NCKAP1
Synonyms:	HEM2; NAP1; NAP125; p125Nap1
Mammalian Cell Selection:	Neomycin
Vector:	pCMV6-AC-GFP (PS100010)
E. coli Selection:	Ampicillin (100 ug/mL)
ORF Nucleotide Sequence:	>RG216578 representing NM_205842 Red=Cloning site Blue=ORF Green=Tags(s)

TTTTGTAATACGACTCACTATAGGGCGGCCGGAATTCGTCGACTGGATCCGGTACCGAGGAGATCTGCC
GCC**CGATCGCC**

ATGTCGCGCTCAGTGCTGCAGCCAGTCAGCAGAAGCTGGCGGAGAAGCTCACCATCCTCAACGACCGGG
GCGTCGGCATGCTCACCCGCTCTACAACATCAAGAAGCAAGGACAAGTTTGAAGGCATGTGGAGACCC
CAAGGCAAACCATCCTATCTTATCGACAAAACCTGGAATCTGCTGTGAAATTCATAGTCAGAAAATTC
CCTGCTGTAGAAACCCGCAACAACAATCAACAGCTTGCAACTACAGAAAGAAAAATCAGAGATTCTGA
AAAATCTGGCATTATATTACTTCACATTTGTAGATGTTATGGAATTTAAGGACCATGTTTGTGAATTGCT
GAATACTATTGAGTTTGCCAAGTCTTCTTTGATATTACTGTAACCTTTGATTTAACAAAGAACTACTTA
GATTTAATTATAACCTATACAACACTAATGATACTGCTGTCTCGAATTGAAGAAAGGAAGCAATCATTG
GATTATACAACATGCCCCATGAAATGACTCATGGAGCAAGTGACAGAGAATACCCACGCCTTGGCCAGAT
GATTGTGGATTATGAAAACCTTTAAAGAAGATGATGGAAGAATTTGTACCCCATAGCAAGTCTCTTTCA
GATGCACTAATTTCTCTTCAAATGGTATATCCTCGAAGGAATCTTTCAGCTGACCAAGTGGAGAAATGCC
AGTTATTGAGCCTCATCAGTGCACCTAGTACAATGCTTAATCCAGCACAGTCCGACACTATGCCTTGTA
ATACCTCTCTTTGGATGCAATGGAAAAGTGGATTATCTTTGGCTTTATTTTGTCCATGGGATCCTAAAT
ACTGACGCTACGCACTGAACCTTTGAAACTAGCTCTTCAAAGTAGCTTTGCCCTCTCTCTTTTCGGG
ATGAAGTTTTCCACATTACAAAAGCTGCAGAAGACTTATTTGTAACATACGAGGCTATAATAAAGGTAT
TAATGACATAAGAGAATGCAAGGAGGCAGCCGTGTCACATGCTGTTCAATGCACAGAGAAAGACGCAAG
TTTTTAAGATCTGCACTGAAGGAATGGCTACTGTCTCTGATCAACCTGGATTGCTAGTCCCAAGG
CACTTTTTGTTTTATGGCATTATCCTTTGCCGTGATGAAATCATCTGGCTACTTCGTCATGCAGATAA
CATGCCAAAGAAGAGTGCAGACGACTTTATAGATAAGCACATTGCTGAATTAATATTTTACATGGAAGAA
CTTAGAGCACATGTGAGGAAATACGGACCTGTAATGCAGAGGTATTACGTGCAGTACCTTTCTGGCTTTG
ATGCTGTTGCTCAATGAACCTGTCAGAATCTTTCTGTTTGCCTGAAGATGAATCAATCATCATGTC
CTCTTTGTAACTATGACTTCCTAAGTGTAAAACAAGTTGAAGATGGGGAAGTATTTGATTCAGA



[View online »](#)

```
GGAATGAGATTAGATTGGTTTAGGTTACAGGCATATACTAGTGTCTCAAAGGCTTCACTTGGCCTTGCAG
ATCACAGAGAAGCTTGGAAAGATGATGAATACAATAATTTTTTCATACAAAATGGTAGATTCCTTGGTGGA
AATGTTGGTGGAAACATCAGATCTCTCCATATTTTGTGTTTTATAGTCGTGCTTTTGAAGAGATGTTTCAA
CAGTGTGGAGTTACCTCTCAATCAAGATACTCAATTGCATTTCCACTACTTTGCACTCATTATTAATGA
GTTGCACGCATGAACTATGTCCAGAAGAGCGACATCATATTGGAGATCGCAGTCTTTCTTATGTAATAT
GTTCTAGATGAAATGGCCAAACAAGCTCGAAATCTCATCACTGATATTTGCACAGAAGCAGTGTACCCCTT
AGTGACCAGTTGCTACCCAAGCATTGTGCCAAAACATCAGTCAAGCAGTGAATAAGAAAACAAAAAAGC
AGACTGGTAAGAAAGGGGAACCTGAAAGGGGAGAAACCAGGTGTTGAGAGCATGAGGAAAAACAGGCTGGT
TGTGACCAACCTTGATAAATTGCACACTGCACTTTCTGAGTTATGCTTCTCTATAAATTATGTACAAAAC
ATGGTGGTATGGGAACATACCTTACCACAGGAGAATATTTGACTTCTCATCTGGAATACGCTTTACCA
AGTCAATTGTTGGGATGACTATGTATAATCAAGCCACACAGGAAATGCAAAAACCTTCAAGAACTTCTAAC
AAGTGTAAGAGCATACATGACCGTACTCCAGTCAATAGAAAACATGTGCAGATTGATATTACAAGAGTA
TTTAATAATGTGCTTCTCAACAAACACAACATTTAGACAGTCATGGAGAGCCAACCATTACAAGTCTAT
ACACAAAATGGTATTTGGAAACTTTGTTACGACAAGTCAGCAATGGCCATATAGCATATTTCTGCAAT
GAAAGCGTTTGTGAACCTACCTACAGAAAATGAATTAACATTCAATGCAGAGGAATATTCTGACATATCA
GAAATGAGGTGATTATCAGAAGCTACTAGGCCCATATGGTATGAAGTTTCTAAGTGAAGCCCTTATGTGGC
ATATTTTATCACAAGTTGCTGAACCTAAGAAAACCTTGGTGGGAGAATGTTGATGTGTTAACACAAAATGAG
GACCAGCTTTGACAAACCAGACCAGATGGCTGCACTGTTTAAAAGATTATCATCTGTTGACAGTGTCTTG
AAGAGGATGACAAATAATTGGTGTATTTTATCCTTCCGATCATTGGCACAAGAAGCACTTAGAGATGTCT
TATCCTACCACATTCCTTTTCTGTAAGTTCAATTGAAGATTTTAAAGGATCACATTCCAAGGGAAACTGA
TATGAAGTTGCAATGAATGTGTATGAGTTATCATCAGCTGCCGATTACCTTGAGATTGATCCTGCA
TTGCTCGTAGCTCTTTCTTCAAAAAATCGGAAAACATTAGTCCAGAAGAAGAGTAAAAATGCCTGCC
TTCTCATGGTGTGTTGTCAGTTTCTTTGCCAACACTGGCCAGTAAATGTGATGTCTCAGTACAGCCTTGC
TATAGAAGGGCATTGCAACAACATACATTGCTTGGCCAAAGCCATCAACCAGATTGCTGCACTTGTGTTT
ACAATTCACAAAGGAAGCATTGAAGACCGTCTTAAAGAATTTCTGGCGCTTGCATCCTCCAGTCTACTGA
AAATTGGCCAGGAGACAGATAAACTACAACAAGAAATAGAGAATCTGTTTATTTACTGCTAGATATGAT
TGTACAAGAACTCCATTCCTTACAATGGATCTTTGGAATCTTGTTCCTTATGTCTTCTGAGAAAAT
GCATACCATGCTGTCTACAAACAAGTGTACATCTTCTGCA
```

ACGCGTACGCGGCCGCTCGAG – GFP Tag – GTTTAA

Protein Sequence:

>RG216578 representing NM_205842
 Red=Cloning site Green=Tags(s)

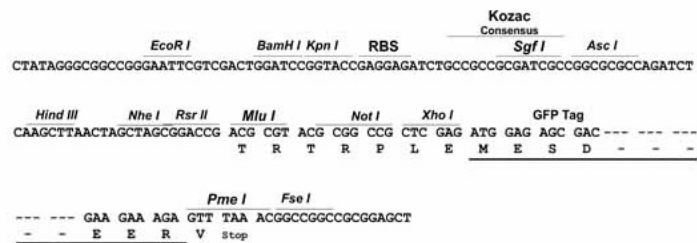
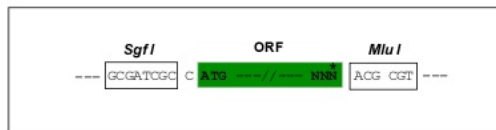
```
MSRSVLQPSQQKLAELK TILNDRGVGML TRL YNIKKQQVWVWACGDPKAKPSYLIDKNLES AVKFI VRKF
PAVETRNNNQQLAQLQKEKSEILKNLALYYFTFVDVMEFKDHVCELLNTIDVCQVFFDITVNFDTKNYL
DLIITYTTLMILLSRIEERKAIIGLYNYAHEMTHGASDREYPRLGQMIVDYENPLKMMEEFVPHSKSLS
DALISLQMVYPRRNL SADQWRNAQLLSLISAPSTMLNPAQSDTMPCEYLSLDAMEKWIIFGFILCHGILN
TDATALNLWKLALQSSSCLSLFRDEVFHIHKAEDLFVNIRGYNKRINDIRECKEAAVSHAGSMHRERRK
FLRSALKELATVLSQPGLLGPKALFVFMALSFARDEIIWLLRHADNMPKKSADDFIDKHIAELIFYMEE
LRAHVRKYGPVMQRYVYQYLSGFDAVVLNQLVQNLVQNLVQNLVQNLVQNLVQNLVQNLVQNLVQNLVQNL
GMRLDWFRLQAYTSVSKASLGLADHRELGKMMNTIIFHTKMVDSLVEMLVETSLSLIFCFYSRAFEMFQ
QCLELPSQSRYSIAFPLLC THFMSCTHELCP EERHHIGDRSLSLCNMFLDEMAKQARNLITDICTEQCTL
SDQLLPKHCAKTI SQAVNKKSKKQTGKKGEPEREKPGVESMRKNRLVVTNLDKLHTALSELFCFSINYPVN
FNNVLLQQTQHLD SHGEPITISLYTNWYLETLLRQVSNGHIA YFPAMKAFVNLPTENELTFNAEEYSDIS
EMRSLSELLGPYGMKFLSESLMWHISSQVAELKKLVVENVVLTQMRTSFDKPDQMAALFKRLSSVDSVL
KRMTIIGVILSFRSLAQEALRDVLSYHIPFLVSSIEDFKDHIPRETDKVMAMNVYELSSAAGLPCEIDPA
LVVALSSQKSENISPEEEYKIACLLMVFVAVSLPTLASNVMSQYSPAIEGHCNNIHCLAKAINQIAAALF
TIHKGSIEDRLKEFLALASSLLKIGQETDKTTTRNRESVYLLLDIMIVQESPFLTMDLLESCFPYVLLRN
AYHAVYKQSVTSSA
```

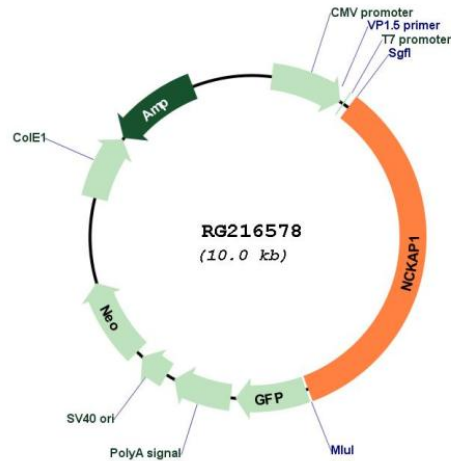
TRTRPLE – GFP Tag – V

Restriction Sites: SgfI-MluI

Cloning Scheme:

Cloning sites used for ORF Shuttling:



Plasmid Map:


ACCN: NM_205842

ORF Size: 3402 bp

OTI Disclaimer: The molecular sequence of this clone aligns with the gene accession number as a point of reference only. However, individual transcript sequences of the same gene can differ through naturally occurring variations (e.g. polymorphisms), each with its own valid existence. This clone is substantially in agreement with the reference, but a complete review of all prevailing variants is recommended prior to use. [More info](#)

OTI Annotation: This clone was engineered to express the complete ORF with an expression tag. Expression varies depending on the nature of the gene.

Components: The ORF clone is ion-exchange column purified and shipped in a 2D barcoded Matrix tube containing 10ug of transfection-ready, dried plasmid DNA (reconstitute with 100 ul of water).

Reconstitution Method:

1. Centrifuge at 5,000xg for 5min.
2. Carefully open the tube and add 100ul of sterile water to dissolve the DNA.
3. Close the tube and incubate for 10 minutes at room temperature.
4. Briefly vortex the tube and then do a quick spin (less than 5000xg) to concentrate the liquid at the bottom.
5. Store the suspended plasmid at -20°C. The DNA is stable for at least one year from date of shipping when stored at -20°C.

RefSeq: [NM_205842.3](#)

RefSeq Size: 4637 bp

RefSeq ORF: 3405 bp

Locus ID: 10787

UniProt ID: [Q9Y2A7](#)

Cytogenetics: 2q32.1

Protein Families: Druggable Genome

Protein Pathways: Regulation of actin cytoskeleton

Gene Summary: Part of the WAVE complex that regulates lamellipodia formation. The WAVE complex regulates actin filament reorganization via its interaction with the Arp2/3 complex. Actin remodeling activity is regulated by RAC1. As component of the WAVE1 complex, required for BDNF-NTRK2 endocytic trafficking and signaling from early endosomes.[UniProtKB/Swiss-Prot Function]