

Product datasheet for **RG216571**

ADAM22 (NM_004194) Human Tagged ORF Clone

Product data:

Product Type:	Expression Plasmids
Product Name:	ADAM22 (NM_004194) Human Tagged ORF Clone
Tag:	TurboGFP
Symbol:	ADAM22
Synonyms:	ADAM 22; DEE61; EIEE61; MDC2
Mammalian Cell Selection:	Neomycin
Vector:	pCMV6-AC-GFP (PS100010)
E. coli Selection:	Ampicillin (100 ug/mL)



[View online »](#)

ORF Nucleotide Sequence:

>RG216571 representing NM_004194
 Red=Cloning site Blue=ORF Green=Tags(s)

TTTTGTAATACGACTCACTATAGGGCGGCCGGGAATTCGTCGACTGGATCCGGTACCGAGGAGATCTGCC
 GCC**CGCATCGCC**

ATGCAGGCGGCAGTGGCTGTGTCCGTGCCCTTCTTGCTGCTCTGTGTCCTGGGGACCTGCCCTCCGGCGC
 GCTGCGGCCAGGCAGGAGACGCCTCATTGATGGAGCTAGAGAAGAGGAAGGAAAACCGCTTCGTGGAGCG
 CCAGAGCATCGTGCCACTGCGCCTCATCTACCGCTCGGGCGGCGAAGACGAAAGTCGGCACGACGCGCTC
 GACACGCGGGTGCGGGGCGACCTCGGTGGCCCGCAGTTGACTCATGTTGACCAAGCAAGCTTCCAGGTTG
 ATGCCCTTTGGAACGTCATTCTCGATGTCGTGCTAAATCATGATTTGCTGCTCTGAATACATAGA
 GAGACACATTGAACATGGAGGCAAGACTGTGGAAGTTAAAGGAGGAGAGCACTGTACTACCAGGGCCAT
 ATCCGAGGAAACCCTGACTCATTGTTGCATTGTCAACATGCCACGGACTTCATGGGATGTTCTATGACG
 GGAACCACACATATCTCATTGAGCCAGAAGAAAATGACACTACTCAAGAGGATTTCCATTTTCATTGAGT
 TTACAAAATCCAGACTGTTTGAATTTTCTTGGATGATCTTCCATCTGAATTTAGCAAGTAAACATTACT
 CCATCAAAAATTTATTTGAAAGCCAAAGACAAAAAGGAGTAAACGGCAGCTTCGTGATATCTCGTAATG
 TAGAAGAAGAAAACAAAATACATTGAACTGATGATTGTGAATGATCACCTATGTTTAAAAAATACCGCT
 TTCCGTTGTACATACCAATACCTATGCGAAATCTGTGGTGAACATGGCAGATTTAATATATAAAGACCAA
 CTTAAGACCAGGATAGTATTGGTTGCTATGGAAACCTGGGCGACTGACAACAAGTTTGCCATATCTGAAA
 ATCCATTGATCACCTACGTGAGTTTATGAAATACAGGAGGGATTTATCAAAGAGAAAAGTGTGACGT
 TCACCTTTTTTCGGGAAGTCAATTTGAGAGTAGCCGAGCGGGCAGCTTATATTGGTGGGATTTGCTCG
 TTGCTGAAAGGAGGAGGCGTGAATGAATTTGGGAAAAGTAAAGTAAAGTAAAGTAAAGTAAAGTAAAGTAAAG
 TAGCCATAATATTGGTATTATCTCAGACAAAAGAAAAGTAAAGTAAAGTAAAGTAAAGTAAAGTAAAGTAAAG
 GTGGTCCGGTGCATAAATGGGAGACACTGGCTATTATCTTCTAAAAAGTTCACCCAGTGAATATTGAA
 GAGTATCATGACTTCTGAATAGTGGAGGTGGTGCCTGCCTTTTCAACAACCTTCTAAGCTTCTTGATC
 CTCCTGAGTGTGGCAATGGCTTCATTGAACTGGAGAGGAGTGTGATTGTGGAACCCCGCCGAATGTGT
 CCTTGAAGGAGCAGAGTGTGTAAGAAATGCACCTTGACTCAAGACTCTCAATGCAGTGACGGTCTTTG
 TGTAAAAAGTGAAGTTTTCAGCCTATGGGCACTGTGTGCCGAGAAGCAGTAAATGATTGTGATATTCGTG
 AAACGTGCTCAGGAAATCAAGCCAGTGTGCCCTAATATTCATAAAATGGATGGATATTCATGTGATGG
 TGTTCAAGGAATTTGCTTTGGAGGAAGATGCAAAACCAGAGATAGACAATGCAAAATACATTTGGGGCAA
 AAGGTGACAGCATCAGACAAATATTGCTATGAGAACTGAATATTGAAGGACGGAGAAGGGTAACTGTG
 GAAAGACAAAGACACATGGATACAGTGAACAACCGGATGTGCTTTGTGGTTACCTTTTGTGTACCAA
 TATTGGCAATATCCCAAGGCTTGGAGAACTCGATGGTGAATCAGTCTACTTTAGTTGTGCAGCAAGGA
 AGAACATTAAGTGCAGTGGTGGCATGTTAAGCTTGAAGAAGATGTAGATCTTGCTATGTGGAAGATG
 GGACACCTTGTGGTCCCAATGATGTGCTTAGAACACAGGTGTCTTCTGTGGCTTCTTCAACTTTAG
 TACTTGTGAGCAGTAAAGAAGGCACTATTGCTCAGGAAATGGAGTTTGCAGTAAATGAGCTGAAGTGT
 GTGTGTAACAGACACTGGATAGGTTCTGATTGCAACACTTACTCCCTCACAATGATGATGCAAAGACTG
 GTACTCTGTCTGGCAATGGTGTGCTGGCACCAATATCATAATAGGCATAATTGCTGGCACCATTTT
 AGTGTGGCCCTCATATTAGGAATAACTGCGTGGGTTATAAAAACTATCGAGAACAGAGACAGTTACCC
 CAGGGAGATTATGTAAGAAAGCCTGGAGATGGTACTTTTTATAGCGACATTCCTCCCGAGTACAGCA
 CAAACTCAGCATCTAGTTCTAAGAAGAGGTCAAATGGGCTCTCTCATTCTTGGAGTGAAAGGATTCAGA
 CAAAAACATATTTAGACATCTGTGAAAATGGGCGACCTCGAAGTAACTCTTGGCAAGGTAACCTGGGA
 GGCAACAAAAAGAAAATCAGAGGCAAAAGATTTAGACCTCGGTCTAATCAACTGAG

ACGCGTACGCGGCCGCTCGAG – GFP Tag – GTTTAA

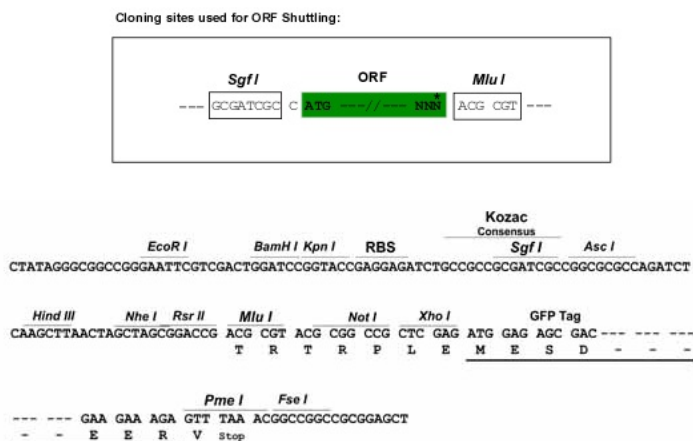
Protein Sequence: >RG216571 representing NM_004194
Red=Cloning site Green=Tags(s)

MQAAVAVSVPFLLL CVLGTCPPARCGQAGDASLMELEKRKENRFVERQSI VPLRLIYRSGGEDES RHDAL
DTRVVRGDLGGPQLTHVDQASFQVDAFGTSFILDVVLNHDLLSSEYIERHIEHGKTVKGGEGHCYYQGH
IRGNPDSFVALSTCHGLHGMFYDGNHTYLIEPEENDTTQEDFHFSVYKSRLFESLDDLPSEFQQVNIT
PSKFILKPRPKRSKRQLRRYPRNVEEETKYIELMIVNDHLMFKKHRLSVVHTNTYAKSVN MADLIYKDQ
LKTRIVLVAMETWATDNKFAISENPLITLREFMKYRRDFIKEKSDAVHLFSGSQFESSRSGAAYIGGICS
LLKGGGVNEFGKTDLMAVTLAQSLAHNIGIISDKRKLASGECKCEDTWSGCIMGDTGYL PKKFTQC NIE
EYHDFLNSGGGACL FNKPSKLLDPPECNGFIETGEECD CGTPAECVLEGAECCKCTLTQDSQCS DGLC
CKKCKFQPMGTVCREAVNDCDIRETCSGNSSQCAPNIHKMDGYSCDGVQGICFGGRCKTRDRQCKYIWGQ
KVTASDKYCYEKLNI EGTEKGNC GKDKDTWIQC NKRDVLCGYLLCTNIGNIPRLGELDGEITSTLVVQQG
RTLNCSSGHVKLEEDVDLGYVEDGTCPGPQMMCLEHRCLPVASFNFSTCLSSKEGTICSGNGVCSNELKC
VCNRHWIGSDCNTYFPHNDDAKTGITLSGNGVAGTNIIIGI IAGTILVLALILGITAWGYKNYRQRQLP
QGDYVKKPGDGSFYSDIPPGVSTNSASSSKRSNGLSHSWSERIPDTKHSIDICENGRPRSNSWQNLG
GNKKKIRGKFRFRPRSNSTE

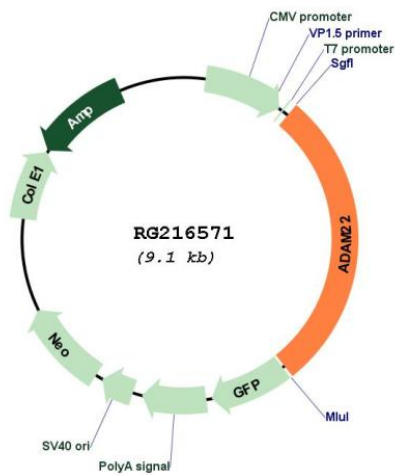
TRTRPLE - GFP Tag - V

Restriction Sites: Sgfl-MluI

Cloning Scheme:



Plasmid Map:



ACCN:	NM_004194
ORF Size:	2577 bp
OTI Disclaimer:	The molecular sequence of this clone aligns with the gene accession number as a point of reference only. However, individual transcript sequences of the same gene can differ through naturally occurring variations (e.g. polymorphisms), each with its own valid existence. This clone is substantially in agreement with the reference, but a complete review of all prevailing variants is recommended prior to use. More info
OTI Annotation:	This clone was engineered to express the complete ORF with an expression tag. Expression varies depending on the nature of the gene.
Components:	The ORF clone is ion-exchange column purified and shipped in a 2D barcoded Matrix tube containing 10ug of transfection-ready, dried plasmid DNA (reconstitute with 100 ul of water).
Reconstitution Method:	<ol style="list-style-type: none">1. Centrifuge at 5,000xg for 5min.2. Carefully open the tube and add 100ul of sterile water to dissolve the DNA.3. Close the tube and incubate for 10 minutes at room temperature.4. Briefly vortex the tube and then do a quick spin (less than 5000xg) to concentrate the liquid at the bottom.5. Store the suspended plasmid at -20°C. The DNA is stable for at least one year from date of shipping when stored at -20°C.
RefSeq:	NM_004194.4
RefSeq Size:	2880 bp
RefSeq ORF:	2580 bp
Locus ID:	53616
UniProt ID:	Q9P0K1
Cytogenetics:	7q21.12
Domains:	Reprolysin, DISIN, Pep_M12B_propep, ACR
Protein Families:	Druggable Genome, Protease, Transmembrane
Gene Summary:	This gene encodes a member of the ADAM (a disintegrin and metalloprotease domain) family. Members of this family are membrane-anchored proteins structurally related to snake venom disintegrins, and have been implicated in a variety of biological processes involving cell-cell and cell-matrix interactions, including fertilization, muscle development, and neurogenesis. Unlike other members of the ADAM protein family, the protein encoded by this gene lacks metalloprotease activity since it has no zinc-binding motif. This gene is highly expressed in the brain and may function as an integrin ligand in the brain. In mice, it has been shown to be essential for correct myelination in the peripheral nervous system. Alternative splicing results in several transcript variants.[provided by RefSeq, Dec 2010]