

Product datasheet for **RG216558**

GCSF Receptor (CSF3R) (NM_156039) Human Tagged ORF Clone

Product data:

Product Type:	Expression Plasmids
Product Name:	GCSF Receptor (CSF3R) (NM_156039) Human Tagged ORF Clone
Tag:	TurboGFP
Symbol:	CSF3R
Synonyms:	CD114; GCSFR; SCN7
Mammalian Cell Selection:	Neomycin
Vector:	pCMV6-AC-GFP (PS100010)
E. coli Selection:	Ampicillin (100 ug/mL)



[View online »](#)

ORF Nucleotide Sequence:

>RG216558 representing NM_156039
 Red=Cloning site Blue=ORF Green=Tags(s)

TTTTGTAATACGACTCACTATAGGGCGGCCGGAATTCGTCGACTGGATCCGGTACCGAGGAGATCTGCC
 GCC**CGGATCGCC**

ATGGCAAGGCTGGAAACTGCAGCCTGACTTGGGCTGCCCTGATCATCTGCTGCTCCCCGGAAGTCTGG
 AGGAGTGCGGGCACATCAGTGTCTCAGCCCCATCGTCCACCTGGGGGATCCCATCACAGCCTCCTGCAT
 CATCAAGCAGAAGTGCAGCCATCTGGACCCGGAGCCACAGATTCTGTGGAGACTGGGAGCAGAGCTTCAG
 CCCGGGGCAGGCAGCAGCGTCTGTCTGATGGGACCCAGGAATCTATCATCACCTGCCCCACCTCAACC
 ACACTCAGGCCTTCTCTCCTGCTGCCTGAACTGGGGCAACAGCCTGCAGATCCTGGACCAGGTTGAGCT
 GCGCGCAGGCTACCCTCCAGCCATACCCACAACCTCTCCTGCCTCATGAACTCACAACCAGCAGCCTC
 ATCTGCCAGTGGGAGCCAGGACCTGAGACCCACCTACCCACCAGCTTCACTCTGAAGAGTTTCAAGAGCC
 GGGGCAACTGTCAGACCAAGGGGACTCCATCCTGGACTGCGTGCCCAAGGACGGGCAGAGCCACTGCTG
 CATCCCACGAAACACCTGCTGTTGTACCAGAATATGGGCATCTGGGTGCAGGCAGAGAATGCGCTGGGG
 ACCAGCATGTCCCACAACCTGTGCTTGTATCCCATGGATGTTGTGAACTGGAGCCCCCATGCTGCGGA
 CCATGGACCCAGCCCTGAAGCGGCCCTCCCCAGGCAGGCTGCCTACAGCTGTGCTGGGAGCCATGGCA
 GCCAGGCTGCACATAAATCAGAAGTGTGAGCTGCGCCACAAGCCGACGCGTGGAGAAGCCAGCTGGGCA
 CTGGTGGGCCCCCTCCCCTGGAGGCCCTTCAATGAGCTCTGCGGGCTCCTCCCAGCCAGGCCCTACA
 CCCTGCAGATACGCTGCATCCGCTGGCCCTGCCTGGCCACTGGAGCGACTGGAGCCCCAGCCTGGAGCT
 GAGAACTACCGAACGGGCCCCACTGTGACTGGACACATGGTGGCGGCAGAGGCAGCTGGAGCCCCAGG
 ACAGTGCAGCTGTTCTGGAAGCCAGTGGCCCTGGAGGAAGACAGCGGACGGATCCAAGGTTATGTGGTTT
 CTGGGACCCCTCAGCCAGGCTGGGGCCATCCTGCCCTTGCACACCACAGAGCTCAGCTGCCACTT
 CCACCTGCCTTTCAGAAGCCAGGAGGTGGCCCTTGTGGCCTATAACTCAGCCGGGACCTCTCGTCCCACT
 CCGGTGGTCTTCTCAGAAAGCAGAGGCCAGCTCTGACCAGACTCCATGCCATGGCCGAGACCCTCACA
 GCCTCTGGGTAGGCTGGGAGCCCCCAATCCATGGCCTCAGGGCTATGTGATTGAGTGGGCGCTGGGCC
 CCCCAGCGCAGCAATAGCAACAAGACCTGGAGGATGGAACAGAATGGGAGAGCCAGGGGTTTCTGCTG
 AAGGAGAACATCAGGCCCTTTCAGCTCTATGAGATCATCGTGACTCCCTTGTACCAGGACACCATGGGAC
 CCTCCCAGCATGTCTATGCCTACTCTCAAGAAATGGCTCCCTCCCATGCCCCAGAGCTGCATCTAAAGCA
 CATTGGCAAGACCTGGGCACAGCTGGAGTGGGTGCCTGAGCCCCCTGAGCTGGGAAGAGCCCCCTTACC
 CACTACACCATCTTCTGGACCAACGCTCAGAACCAGTCTTCTCCGCCATCCTGAATGCCTCCTCCCGTG
 GCTTTGTCTCCATGGCCTGGAGCCCGCAGTCTGTATACATCCACCTCATGGCTGCCAGCCAGGCTGG
 GGCCACCAACAGTACAGTCTCACCTGATGACCTTGACCCAGAGGGGTGCGAGCTACACATCATCCTG
 GGCTGTTCGGCCTCCTGCTGTTGCTCACCTGCCTCTGTGGAAGTGCCTGGCTCTGTTGCAGCCCCAACA
 GGAAGAATCCCCCTCTGGCCAAGTGTCCCAGACCCAGCTCACAGCAGCCTGGGCTCCTGGGTGCCACAAT
 CATGGAGGAGCTGCCCGGACCCAGACAGGGACAGTGGCTGGGGCAGACATCTGAAATGAGCCGTGCTCTC
 ACCCCACATCCTTGTGTGCAGGATGCCTTCCAGCTGCCCGGCTTGGCACGCCACCCATACCAAGCTCA
 CAGTCTGGAGGAGGATGAAAAGAAGCCGGTGCCTGGGAGTCCATAACAGCTCAGAGACCTGTGGCT
 CCCCACCTCTGGTCCAGACCTATGTGCTCCAGGGGACCCAAAGAGCAGTTTCCACCCAGCCCCAATCCCAG
 TCTGGCACCCAGGATCAGGTCTTTATGGGCAGCTGCTGGGCAGCCCCACAAGCCAGGGCCAGGGCACT
 ATCTCCGCTGTGACTCCACTCAGCCCTCTTGGCGGGCTCACCCCCAGCCCCAAGTCTATGAGAACCT
 CTGTTTCCAGGCCAGCCCTTGGGGACCTTGTAAACCCAGCCCCAAGCCAGGAGGACGACTGTGTCTTT
 GGGCCACTGCTCAACTTCCCCTCCTGCAGGGATCCGGTCCATGGGATGGAGGCGCTGGGGAGCTTC

ACGCGTACGCGGCCGCTCGAG - GFP Tag - GTTTAA

Protein Sequence: >RG216558 representing NM_156039
Red=Cloning site Green=Tags(s)

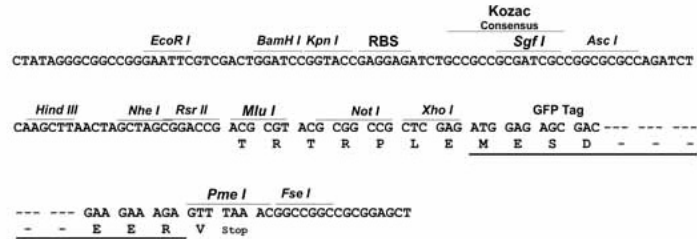
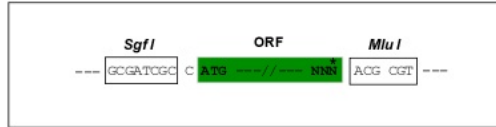
```
MARLGNCSLTWAALIILLPGSLEECGHISVSAPIVHLGDPITASCIKQNCSHLDPEPQILWRLGAELQ
PGGRQQRLSDGTQESIITLPHLNHTQAFLLSCCLNWGNSLQILDQVELRAGYPPAIPHNLSCLMNLTSS
ICQWEPGPETHLPTSFTLKSFKSRGNCQTQGDSILDCVPKDGQSHCCIPRKHLLLYQNMGIWVQAENALG
TSMSPQLCLDPM DVV KLEPPMLRTMDPSPEAAPPQAGCLQLCWEPWQPGLHINQKCELRHKPQRGEASWA
LVGPLPLEALQYELCGLLPATAYTLQIRCIRWPLPGHWSWSPSLELRTERAPT VRLDTWWRQRQLDPR
TVQLFWKPVPLEEDSGRIQGYVVSWRPSGQAGAILPLCNTTEL SCTFHLPSEAQEV ALVAYNSAGTSRPT
PVVFESESRG PALTRLHAMARDPHSLWVGWEPNPWPQGYVIEWGLGPPSASNSNKTWRMEQNGRATGFL
KENIRPFQLYEIIVTPL YQDTMGPSQHVYAYSQEMAPSHAPELHLKHIGKTWAQLEWVPEPPEL GKSP
LTYTIFWTNAQNQSF SAILNASSRGFVLHGLEPASLYHIHLMAASQAGATNSTVL TLMTLTPEGSELHI
ILGLFGLLLLLTCLCGTAWLCCSPNRKNPLWPSVDP AHSSLGSWVPTIMEELPGPRQGQWLQGTSEMSR
ALTPHPCVQDAFQLPGLGTPPIITKLTVLEEDEK KVPWESHNSSETCGLPTLVQTYVLQGDPRAVSTQ
PQSQSGTSDQVLYGQLLGSPTSPGPGHYLRCDSTQPLLAGLTPSPKSYENLWFQASPLGTLVTPAPSQ
EDDCVF GPLLNFPLLQGIRVHGMEALGSF
```

TRTRPLE - GFP Tag - V

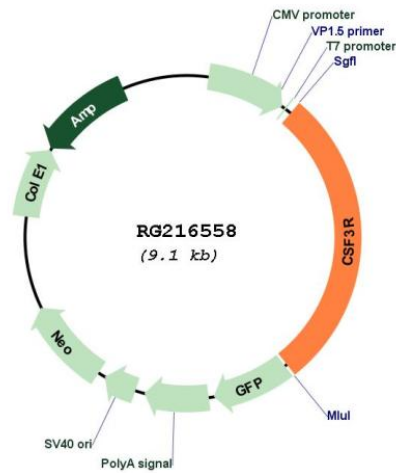
Restriction Sites: Sgfl-MluI

Cloning Scheme:

Cloning sites used for ORF Shutting:



Plasmid Map:



ACCN:	NM_156039
ORF Size:	2589 bp
OTI Disclaimer:	The molecular sequence of this clone aligns with the gene accession number as a point of reference only. However, individual transcript sequences of the same gene can differ through naturally occurring variations (e.g. polymorphisms), each with its own valid existence. This clone is substantially in agreement with the reference, but a complete review of all prevailing variants is recommended prior to use. More info
OTI Annotation:	This clone was engineered to express the complete ORF with an expression tag. Expression varies depending on the nature of the gene.
Components:	The ORF clone is ion-exchange column purified and shipped in a 2D barcoded Matrix tube containing 10ug of transfection-ready, dried plasmid DNA (reconstitute with 100 ul of water).
Reconstitution Method:	<ol style="list-style-type: none">1. Centrifuge at 5,000xg for 5min.2. Carefully open the tube and add 100ul of sterile water to dissolve the DNA.3. Close the tube and incubate for 10 minutes at room temperature.4. Briefly vortex the tube and then do a quick spin (less than 5000xg) to concentrate the liquid at the bottom.5. Store the suspended plasmid at -20°C. The DNA is stable for at least one year from date of shipping when stored at -20°C.
RefSeq:	NM_156039.3
RefSeq Size:	3084 bp
RefSeq ORF:	2592 bp
Locus ID:	1441
UniProt ID:	Q99062
Cytogenetics:	1p34.3
Protein Families:	Druggable Genome, ES Cell Differentiation/IPS, Secreted Protein, Transmembrane
Protein Pathways:	Cytokine-cytokine receptor interaction, Hematopoietic cell lineage, Jak-STAT signaling pathway, Pathways in cancer
Gene Summary:	The protein encoded by this gene is the receptor for colony stimulating factor 3, a cytokine that controls the production, differentiation, and function of granulocytes. The encoded protein, which is a member of the family of cytokine receptors, may also function in some cell surface adhesion or recognition processes. Alternatively spliced transcript variants have been described. Mutations in this gene are a cause of Kostmann syndrome, also known as severe congenital neutropenia. [provided by RefSeq, Aug 2010]