

Product datasheet for **RG216538**

NALP1 (NLRP1) (NM_014922) Human Tagged ORF Clone

Product data:

Product Type:	Expression Plasmids
Product Name:	NALP1 (NLRP1) (NM_014922) Human Tagged ORF Clone
Tag:	TurboGFP
Symbol:	NLRP1
Synonyms:	AIADK; CARD7; CILED; CLR17.1; DEFCAP; DEFCAP-L/S; JRRP; MSPC; NAC; NALP1; PP1044; SLEV1; VAMAS1
Mammalian Cell Selection:	Neomycin
Vector:	pCMV6-AC-GFP (PS100010)
E. coli Selection:	Ampicillin (100 ug/mL)
ORF Nucleotide Sequence:	>RG216538 representing NM_014922 Red=Cloning site Blue=ORF Green=Tags(s)

TTTTGTAATACGACTCACTATAGGGCGGCCGGAATTCGTCGACTGGATCCGGTACCGAGGAGATCTGCC
GCC**CGATCGCC**

ATGGCTGGCGGAGCCTGGGGCCGCTGGCCTGTTACTTGGAGTTCCTGAAGAAGGAGGAGCTGAAGGAGT
TCCAGTCTCTGCTCGCCAATAAAGCGCACTCCAGGAGCTCTTCGGGTGAGACACCCGCTCAGCCAGAGAA
GACGAGTGGCATGGAGGTGGCCTCGTACCTGGTGGCTCAGTATGGGGAGCAGCGGCCCTGGGACCTAGCC
CTCCATACCTGGGAGCAGATGGGGCTGAGGTCACTGTGCGCCCAAGCCAGGAAGGGGCAGGCCACTCTC
CCTCATTCCCCTACAGCCAAGTGAACCCACCTGGGGTCTCCAGCCAACCCACCTCCACCGCAGTGCT
AATGCCCTGGATCCATGAATTGCCGGCGGGTGCACCCAGGGCTCAGAGAGAAGGGTTTTGAGACAGCTG
CCTGACACATCTGGACGCCGCTGGAGAGAAATCTCTGCCTCACTCTCTACCAAGCTCTTCCAAGCTCCC
CAGACCATGAGTCTCAAGCCAGGAGTCAACCAACGCCCCACATCCACAGCAGTCTGGGGAGCTGGGG
ATCCCCACCTCAGCCAGCCTAGCACCCAGAGAGCAGGAGGCTCCTGGGACCCAATGGCCTCTGGATGAA
ACGTCAGGAATTTACTACACAGAAATCAGAGAAAGAGAGAGAGAGAAATCAGAGAAAGGCAGGCCCCAT
GGGCAGCGGTGGTAGGAACGCCCCACAGGCGCACACCAGCCTACAGCCCCACCACCACCCATGGGAGCC
TTCTGTGAGAGAGAGCCTCTGTTCCACATGGCCCTGGAAAAATGAGGATTTTAACCAAAATTCACACAG
CTGCTACTTCTACAAAGACCTCACCCAGAAGCCAAGATCCCCTGGTCAAGAGAAGCTGGCCTGATTATG
TGGAGGAGAATCGAGGACATTTAATTGAGATCAGAGACTTATTTGGCCCAGGCCTGGATACCCAAGAACC
TCGCATAGTCATACTGCAGGGGGCTGCTGGAATTGGGAAGTCAACTGGCCAGGCAGGTGAAGGAAGCC
TGGGGGAGAGGCCAGCTGTATGGGGACCGCTTCCAGCATGTCTTCTACTTCAGCTGCAGAGAGCTGGCCC
AGTCCAAGGTGGTGAGTCTCGCTGAGCTCATCGAAAAAGATGGGACAGCCACTCCGGCTCCCATAGACA
GATCCTGTCTAGGCCAGAGCGGTGCTCTTTCATCCTCGATGGTGTAGATGAGCCAGGATGGGTCTTGACG
GAGCCGAGTTCTGAGCTCTGTCTGCACTGGAGCCAGCCACAGCCGGCGGATGCACTGCTGGGCAGTTTGC
TGGGAAAATACTTCCCAGGCATCCTTCTGATCACGGCTCGGACCACAGCTCTGCAGAACCTCAT



[View online »](#)

TCCTTCTTTGGAGCAGGCACGTTGGGTAGAGGTCTGGGGTTCTCTGAGTCCAGCAGGAAGGAATATTTCT
TACAGATATTTACAGATGAAAGGCAAGCAATTAGAGCCTTTAGGTTGGTCAAATCAAACAAAGAGCTCT
GGGCCCTGTGTCTTGTGCCCTGGGTGTCTGGCTGGCCTGCACCTGCCTGATGCAGCAGATGAAGCGGAA
GGAAAACTCACACTGACTTCCAAGACCACCACAACCCCTGTCTACATTACCTTGCCAGGCTCTCCAA
GCTCAGCCATTGGGACCCAGCTCAGAGACCTGTCTCTGGCTGTGAGGGCATCTGGCAAAAAAGA
CCCTTTTCAGTCCAGATGACCTCAGGAAGCATGGGTAGATGGGGCCATCATCTCCACCTCTTGAAGAT
GGGTATTTCAAGAGCACCCCATCCCTGAGCTACAGCTTCATCACCTCTGTTTCCAAGAGTTCTTT
GCAGCAATGTCTATGTCTTGGAGGATGAGAAGGGGAGAGGTAAACATTCTAATTGCATCATAGATTTGG
AAAAGACGCTAGAAGCATATGGAATACATGGCCTGTTTGGGGCATCAACCACACGTTTCTATTGGGCT
GTTAAGTGATGAGGGGGAGAGAGATGGAGAACATCTTCACTGCCGGTGTCTCAGGGGAGGAACCTG
ATGCAGTGGTCCCGTCCCTGCAGCTGTCTGCAGCCACACTCTCTGGAGTCCCTCCACTGCTGTACG
AGACTCGAACAACAAAGTTCCTGACACAAGTGATGGCCATTCGAAGAAATGGGCATGTGTGTAGAAAC
AGACATGGAGCTTTAGTGTCACTTTCTGCATTAATTCAGCCGCCACGTGAAGAAGCTTCAGCTGATT
GAGGGCAGGCAGCACAGATCAACATGGAGCCCAACATGGTAGTCTGTTAGGTTGGTCCCAGTACAG
ATGCCTATTGGCAGATTCTTTCTCCGTCTCAAGGTACCAGAAACCTGAAGGAGCTGGACCTAAGTGG
AAACTCGCTGAGCCACTCTGCAGTGAAGAGTCTTTGTAAGACCCTGAGACGCCCTCGCTGCCTCCGGAG
ACCCTGCGGTTGGCTGGCTGTGGCTCACAGCTGAGGACTGCAAGGACCTTGCCCTTTGGGCTGAGAGCCA
ACCAGACCCTGACCGAGCTGGACCTGAGCTTCAATGTGCTCACGGATGCTGGAGCCAAACACCTTTGCCA
GAGACTGAGACAGCCGAGCTGCAAGCTACAGCGACTGCAGCTGGTGCAGCTGTGGCCTCACGTCTGACTGC
TGCCAGGACCTGGCCTCTGTGCTTAGTGCCAGCCCAAGCTGAAGGAGCTAGACCTGCAGCAGAACAACC
TGGATGACGTTGGCGTGCAGTGTCTGTGAGGGGCTCAGGCATCCTGCCTGCAAACTCATAACGCTGGG
GCTGGACCAGACAACCTGAGTGATGAGATGAGGCAGAACTGAGGGCCCTGGAGCAGGAAACCTCAG
CTGCTATCTTTCAGCAGACGGAACCAAGTGATGACCCCTACTGAGGGCTGGATACGGGAGAGATGA
GTAAATAGCACATCCTCACTCAAGCGGCAGAGACTCGGATCAGAGAGGGCGGCTTCCCATGTTGCTCAGGC
TAATCTCAAACCTCTGGACGTGAGCAAGATCTTCCCAATTGCTGAGATTGCAGAGGAAAGCTCCCCAGAG
GTAGTACCGGTGGAACCTTGTGCGTGCCTTCTCCTGCCTCTCAAGGGGACCTGCATACGAAGCCTTTGG
GGACTGACGATGACTTCTGGGGCCACGGGGCTGTGGCTACTGAGGTAGTTGACAAAGAAAAGAACTT
GTACCGAGTTCACCTCCCTGTAGCTGGCTCCTACCCTGGCCCAACACGGGTCTCTGCTTTGTGATGAGA
GAAGCGGTGACCGTTGAGATTGAATCTGTGTGTGGGACCAGTTCCTGGGTGAGATCAACCCACAGCACA
GCTGGATGGTGGCAGGGCTCTGCTGGACATCAAGGCTGAGCCTGGAGCTGTGGAAGCTGTGCACCTCCC
TCACTTTGTGGCTCTCAAGGGGCCATGTGGACACATCCCTGTTCCAAATGGCCCACTTTAAAGAGGAG
GGGATGCTCCTGGAGAAGCCAGCCAGGGTGGAGCTGCATCACATAGTTCTGGAAAACCCAGCTTCTCCC
CCTTGGGAGTCCCTGAAAATGATCCATAATGCCCTGCGCTTCAATCCCGTCACCTCTGTGGTGTGTCT
TTACCACCGCTCCATCCTGAGGAAGTACCTTCCACCTACCTGATCCCAAGTGAAGTGTCCATTTCGG
AAGGAACCTGGAGCTCTGCTATCGAAGCCCTGGAGAAGACCAGCTGTTCTCGGAGTTTACGTTGGCCACT
TGGGATCAGGGATCAGGCTGCAAGTGAAGACAAGAAAGATGAGACTCTGGTGTGGGAGGCTTGGTGAA
ACCAGGAGATCTCATGCCTGCAACTACTCTGATCCCTCCAGCCGCATAGCCGTACCTTCCACTCTGGAT
GCCCGCAGTTGCTGCACTTTGTGGACCAGTATCGAGAGCAGCTGATAGCCCGAGTGACATCGGTGGAGG
TTGTCTTGGCAAACTGCATGGACAGGTGCTGAGCCAGGAGCAGTACGAGAGGGTGTGGCTGAGAACAC
GAGGCCACGCCAGATGCGGAAGCTGTTAGCTTGAAGCAGTCTGGGACCAGGAGTGCAAAAGATGGACTC
TACCAAGCCCTGAAGGAGACCCATCCTCACCTCATTATGGAACCTCTGGGAGAAGGCAGCAAAAAGGGAC
TCCTGCCACTCAGCAGC

ACGCGTACGCGGCCGCTCGAG - GFP Tag - GTTAA

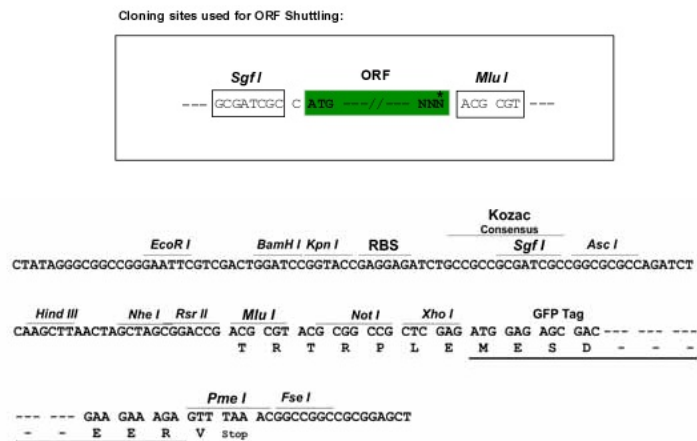
Protein Sequence: >RG216538 representing NM_014922
 Red=Cloning site Green=Tags(s)

```
MAGGAWGRLACYLEFLKKEELKEFQLLLANKAHSRSSSGETPAQPEKTSMEVASYLVAQYGEQRAWDLA
LHTWEQMGLRSLCAQAQEGAGHSPSPFPYSPSEPHLGSPSQPTSTAVLMPWIHELPAAGCTQGSERRVLRQL
PDTSGRRWREISASLLYQALPSSPDHESPSQESPNAPTSTAVLGSWGSPPQPSLAPREQEAPGTQWPLDE
TSGIYYTEIREREREKSEKGRPPWAAVVGTPPQAHTSLQPHHPWEPVRESLCSSTWPKNEDFNQKFTQ
LLLLQRPHRSQDPLVKRSWPDYVEENRGLIEIRDLFPGPLDTQEPRIVILQGAAGIGKSTLARQVKEA
WGRGQLYGRDFQHVYFSCRELAQSKVVSALAEIGKDGATPAPIRQILSRPERLLFILDGVDEPGWVLQ
EPSSSELCHWSQPQPADALLGSLGKTLPEASFLITARTTALQNLIPSLEQARWVEVLGFSESSRKEYF
YRYFTDERQAIRAFRLVKSNEKELWALCLVPVSWLACTCLMQQMKRKEKLTLSKTTTTLCLHYLAALQ
AQPLGPQLRDLCSLAAEWQKTLFSPDDL RKHGLDGAIISTFLKMGILQEHP IPLSYF IHLCFQEFF
AAMSYVLEDEKGRGKHSNCIIDLEKTL EAYGIHGLFGASTTRFLLGLLSDEGEREMENIFHCRLSQGRNL
MQWVPSLQLLLQPHSLESLHCLYETRNKTFLTQVMAHFEEMGMCVETDMELLVCTFCIKFSRHVKKLQLI
EGRQHRSTWSPTMVVLRWVPVTDAYWQILFVSLKVTRNLKELDLSGNSLSHSAVKSLCKTLRRPRCLLE
TLRLAGCGLTAEDCKDLAFGLRANQTLTELDLSFNVLTDAGAKHL CQRLRQPSCKLQRLQLVSCGLTSDC
CQDLASVLSASPSLKELDLQQNNLDDVGVRLCEGLRHPACKLIRLGLDQTTLSDEMRQELRALEQKPK
LLIFSRRKPSVMTPEGLDTGEMSNSTSSLRQRLGSERAASHVAQANLKLDDVSKIFPIAIEAEESSPE
VVPVELLCVPSASQGD LHTKPLGTDDDFWGTPVATEVVDKEKNLYRVHFPVAGSYRWPNTGLCFVMR
EAVTVEIEFCVWDQFLG E INPQHSWMVAGPLLDIKAEPGAVEAVHLPHFVALQGGHVDTSL FQMAHFKEE
GMILLEKPARVELHHIVLENPSFSPLGVLLKMIHNALRFIPVTSVLLYHRVHPEEVTFFHL YLIPSDCSIR
KELELCYRSPGEDQLFSEFYVGHLSGIRLQVKDKKDETLVWEALVKPGDLMPATLIPPARI AVPSPLD
APQLLHFVDQYREQLIARVTSVEVVLDKLGQVLSQEQYERVL AENTRPSQMRKLFSLSQSWDRCKCKDGL
YQALKETHPHLIMELWEKSGSKGLLPLSS
```

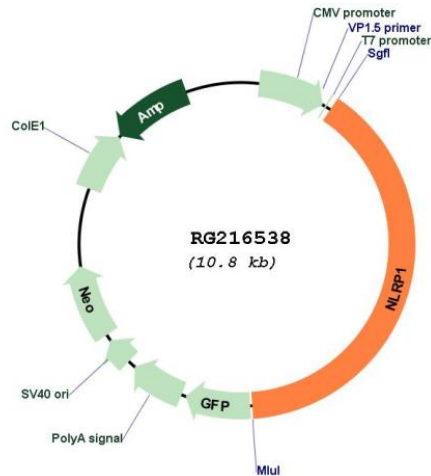
TRTRPLE - GFP Tag - V

Restriction Sites: SgfI-MluI

Cloning Scheme:



Plasmid Map:



ACCN:	NM_014922
ORF Size:	4287 bp
OTI Disclaimer:	The molecular sequence of this clone aligns with the gene accession number as a point of reference only. However, individual transcript sequences of the same gene can differ through naturally occurring variations (e.g. polymorphisms), each with its own valid existence. This clone is substantially in agreement with the reference, but a complete review of all prevailing variants is recommended prior to use. More info
OTI Annotation:	This clone was engineered to express the complete ORF with an expression tag. Expression varies depending on the nature of the gene.
Components:	The ORF clone is ion-exchange column purified and shipped in a 2D barcoded Matrix tube containing 10ug of transfection-ready, dried plasmid DNA (reconstitute with 100 ul of water).

Reconstitution Method:	<ol style="list-style-type: none">1. Centrifuge at 5,000xg for 5min.2. Carefully open the tube and add 100ul of sterile water to dissolve the DNA.3. Close the tube and incubate for 10 minutes at room temperature.4. Briefly vortex the tube and then do a quick spin (less than 5000xg) to concentrate the liquid at the bottom.5. Store the suspended plasmid at -20°C. The DNA is stable for at least one year from date of shipping when stored at -20°C.
RefSeq:	NM_014922.5
RefSeq Size:	5491 bp
RefSeq ORF:	4290 bp
Locus ID:	22861
UniProt ID:	Q9C000
Cytogenetics:	17p13.2
Domains:	LRR, LRR_RI, PAAD_DAPIN
Protein Families:	Druggable Genome
Protein Pathways:	NOD-like receptor signaling pathway
Gene Summary:	<p>This gene encodes a member of the Ced-4 family of apoptosis proteins. Ced-family members contain a caspase recruitment domain (CARD) and are known to be key mediators of programmed cell death. The encoded protein contains a distinct N-terminal pyrin-like motif, which is possibly involved in protein-protein interactions. This protein interacts strongly with caspase 2 and weakly with caspase 9. Overexpression of this gene was demonstrated to induce apoptosis in cells. Multiple alternatively spliced transcript variants encoding distinct isoforms have been found for this gene, but the biological validity of some variants has not been determined. [provided by RefSeq, Jul 2008]</p>