

Product datasheet for **RG216524**

Apc1 (ANAPC1) (NM_022662) Human Tagged ORF Clone

Product data:

Product Type:	Expression Plasmids
Product Name:	Apc1 (ANAPC1) (NM_022662) Human Tagged ORF Clone
Tag:	TurboGFP
Symbol:	ANAPC1
Synonyms:	APC1; MCPR; TSG24
Mammalian Cell Selection:	Neomycin
Vector:	pCMV6-AC-GFP (PS100010)
E. coli Selection:	Ampicillin (100 ug/mL)
ORF Nucleotide Sequence:	>RG216524 representing NM_022662 Red=Cloning site Blue=ORF Green=Tags(s)

TTTTGTAATACGACTCACTATAGGGCGGCCGGAATTCGTCGACTGGATCCGGTACCGAGGAGATCTGCC
GCC**CGATCGCC**

ATGTCGAACTTCTATGAAGAAAGGACAACGATGATTGCAGCAAGGGATTGCAGGAATTTGTTCTTTTG
GTCGAGACCCTGCAAGCACCACCTAATGCTTTGAACCTTCACTTCGCCAGCTGCAGCCAGCTTCTGA
ATTATGGTCTTCTGATGGTGCTGCTGGCTTGGTGGGATCCCTTCAGGAGGTTACAATCCACGAGAAACAG
AAGGAAAGCTGGCAGTTAAGGAAAGGAGTAAGTAAAATGGAGAAGATGTGGACTATGATGAGGAACCTCT
ATGTTGCTGGAATATGGTGATATGGAGCAAAGGAAGTAAAAGCCAGGCATTGGCAGTTTATAAAGCATT
TACAGTTGACAGTCTGTTGAGCAGGCATTGTGGTGTGACTTCATTATATCACAGGATAAGTCTGAAAAG
GCCTACAGTAGCAATGAAGTAGAAAAATGCATATGTATATTGCAAAGCTCATGTATTAACATGCATAGCA
TAGAAGGAAAGGATTACATAGCTTCACTACCATTTTCAGGTTGCAAATGTTTGGCCCACTAAATATGGATT
GCTGTTTGAACGAAGCGCTTCTTACATGAAGTACCTCCAGGTTCAACCCAGAGAACCTTTACCTACTATG
TTCAGCATGCTGCACCCACTAGATGAAATAACTCCACTTGTGTTGTAATCTGGAAGTCTTTTTGGTTTCA
CACGGGTGCAATATGTTGTAGATCATGCAATGAAAATGTTTTCTCAACTACTGACCCCTCTATTGTAAT
GACTTATGATGCTGTTCAAATGTGATTCTGTGTGGACTCTCCGGAGAGTCAAATCAGAGGAAGAGAAT
GTTGTTTTAAAGTTCTCTGAACAGGGGGGAACCCACAGAATGTGGCCACTAGCAGCTCCCTCACAGCAC
ATCTCAGAAGCCTCTCAAAGGAGATTCCCTGTGACTTCACCTTCCAGAATTACTCCTCCATTCACAG
CCAGAGTCGCTCAACCTCATCACCCAGTCTACATTCTCGTCCACCTTCTATTTCCAAATGGCAGCTCTA
AGTCGTGCTCATTCTCCTGCGTTAGGAGTGCACCTTTTTTCAGGGGTGCAAAGGTTCAACATTTCAAGCC
ATAATCAGTCTCAAAGAGACATAGTATTTCTCATTCTCAAATAGTAATTCTAATGGCTCCTTTCTTGC
ACCAGAAACGGAGCCAATTGTTCTGAACTGTGATTGACCATTTGTGGACAGAAACGATTACTAATATA
AGAGAGAAAAATCACAAGCCTCAAAGTGTATTACATCTGACCTATGTGGGCAAAGTTCCTGTGCT
TTTTAGTAGAGTCCAGCTCCAGTTACGCTGTGTAAGTTTCAAGAGAGTAATGATAAAACCCAGCTCAT
CTTTGGTTCAGTGACCAACATACCAGCAAAGGATGCAGCACCCAGTGGAGAAAATAGACACCATGCTGGTC



[View online »](#)

TTGGAAGGCAGTGGAAACCTGGTGTATACACAGGAGTGGTTCGGGTGGGAAAGGTTTTTATTCCTGGAC
 TGCCAGCTCCCTCTGACGATGTCCAACACAATGCCTCGGCCAGTACTCCACTAGATGGCGTTAGTAC
 TCCAAAGCCTCTTAGTAACTCCTTGGATCATTGGACGAGGTTGTTCTGTGTCCCAGTTCCAGAACTG
 AGGGATTCTTCAAACCTCATGATTCTCTATAATGAGGATTGACTTTCCAACAGCTTGGAACTTACA
 TTCATTCTATCAGAGATCCTGTCCATAACAGAGTACCCTGGAAGTGAATGGCTCCATGGTTAGGAT
 CACTATTCCTGAAATTGCCACCTCTGAGTTAGTACAAACGTGTTTGAAGCAATTAAGTTATCCTGCCA
 AAAGAAATAGCAGTTTCCAGATGCTTGTCAAGTGGTACAATGTCCACAGTGTCCAGGAGACCCAGTTATC
 ACTCAGAGTGGAAATTTATTTGTGACTTGTCTCATGAACATGATGGGTTATAACACAGACCCCTTAGCATG
 GACTAGAAATTTTGAAGGATCACTTTCTCCTGTGATTGCGCCAAAAAGCAAGGCCTCCGAG
 ACTGGATCTGATGACTGGGAATATTTACTAAATTCAGACTACCACCAGAATGTTGAGTCTCATCTTT
 TGAACAGATCTTATGTCTGAGTCCCTCAGAAGCTTACAGATGAAGGATGAGGATTTTTACAGAATCT
 CAGTCTGGATTCTTACACTTCTTTACTCACATACCTGCAATTTTTTTCGTTCTTACCTTGTGTAT
 GAGGAGCTTAAGTTGAATACTCTAATGGGAGAAGGAATTTGTTCACTTGTGAACTTCTCGTTCAAGTTGG
 CAAGGGACTTAAAATGGGGCCTTATGTAGATCATTACTATAGAGACTACCAACGCTTGCAGAACTAC
 TGGACAAGTGTGCACAATTGATCCAGGTCAAACAGGATTTATGCATCATCCATCATTTTTACGTTCTGAG
 CCACCAAGTATTTATCAGTGGGTGAGTCTTGTCTGAAGGGTGAAGGAATGCCACCTTATCCTTACCTCC
 CTGGAATCTGTGAAAGAAGCAGACTTGTAGTCTTGTAGTATTGCACTGTACATACTTGGTGTGAGAGCTT
 GTTTTCTGATGAATCCTCACAGTATTTAAACAGAATAACTATAGCCCCCAGAAGTTGCAAGTAGAACAA
 GAGGAAAACAGGTTTGTAGTTTTCAGGCATTCTACATCTGTTTCTAGTCTAGCTGAAAGATTGGTTGTCTGGA
 TGACTAATGTAGGATTCACTTTAAGAGATTTGGAACTCTTCCCTTTGGAATTGCTTCCCATCAGAGA
 TGCAATTTACTCTGTGAGCAGCCTGCCTCAGACTGGCCAGAAGCTGTCTGTCTTGTATTGGACGT
 CAGGATCTTCCAAGCAGCCTGCGAAGGAACTTACCCAAAGGGAAGTCTGTGCTCTCATCAGATGTTT
 CTTCAGGAACAGAACTGAGGAGGAAGTGCAGGCAATGAATGACATGAATCAGCAGGATCATGTCATTAAT
 ATGGAGTGAAGATTTAAGGGTGCAGGATGTGCGAAGGCTTCTTCCAGAGTGCAGTCTGTCCGTTGCAAC
 GTAGTGCAGTACCAGAGCTCAGTGACCAGGTTTATCGAGGAAAAGGAAAACAGATTGCTCCAATTGT
 GTCAGCGAACTATGGCTCTTCTGTAGGACGAGGAATGTTTACCTTGTGTTTTCGTACCATCCTGTTCCAAC
 AGAGCCATTGCCTATTCCTAAATGAATCTGACTGGGCGTGCCCTCCTCGGAACACAACAGTAGACCTT
 AATAGTGGAAACATCGATGTGCCTCCAACATGACAAGCTGGGCCAGCTTTCATAATGGTGTGGCTGCTG
 GCCTGAAGATAGCTCCTGCCTCCAGATCGACTCAGCTGGATTGTTTACAATAAGCCCAAGCATGCTGA
 GTTGGCCAATGAGTATGTGGCTTCTCATGGCTCTGGGTTTGAATGGGCACCTTACCAAGCTGGCGACT
 CTCAATATCCATGACTACTTGACCAAGGGCCATGAAATGACAAGCATTGGACTGCTACTTGGTGTCTCTG
 CTGCAAACTAGGCACCATGGATATGTCTATTACTCGGCTTCTTAGCATTACATTCTGTCTCTTACC
 CCCAACGTCACAGAGCTGGATGTTCTCACAATGTCCAAGTGGCTGCAGTGGTTGGCATTGGCCTTGTA
 TATCAAGGGACAGCTCACAGACATACTGCAGAAGTCTGTTGGCTGAGATAGGACGGCCTCCTGGTCTCTG
 AAATGGAATACTGCACTGACAGAGATCATACTCCTTAGCTGTGGCTTGGCCCTGGGCATGGTCTGCTT
 GGGGATGGCAGCAATTTGATAGGTATGTCTGATCTCAATGTGCCTGAGCAGCTCTATCAGTACATGGTT
 GGAGGACATAGGCGCTTCAAACAGGAATGCATAGGGAGAACAATAAATCACCAAGTTATCAAAATCAAAG
 AAGGAGATACCAATAAATGTGGATGTGACTTGTCCAGGTGCTACTTAGCTTTGGCTATGATCTACTTAAA
 AACCAATAACAGATCTATTGCAGATTGGCTCCGAGCCCTGACACCATGATTTGTTGGACTTTGTGAAG
 CCAGAATTTCTTGTGTTAGGACACTTGTCTGATGCCTGATTTTGTGGATGATATTTTACCAAATTTCCA
 AGTGGGTTGACAGCAATGTTCTCAAATTAAGAGAAAATAGTATCTCTCTCAGTGAATCGAATTGCC
 GTGCTCAGAGGATTTGAATTTGGAACTTTGTCCAAGCAGATGTCTACATAATTGCAGGAGCCTGCTTG
 TCTCTGGGTTTTCGATTTGCTGGCTCAGAAAATTTATCAGCATTAAGTGTGTTGATAAATTTGCCAAAG
 ATTTTATGACTTATTTGTCGCACCTAATGCTTCTGTTACAGGTCTCATAACCTAGAACTTGTCTGAG
 CGTGGTGTGCTGTCTCTCGCCATGGTCATGGCTGGCTCAGGAAACCTAAAGTTTTGCAGCTTTGTCGC
 TTCTTACACATGAAAACGGTGGTGAATGAACATGTTTTCCTTAGCCACCATGGCCCTGGAC
 TTCTATTTTTGGGAGGAGGAAGTACTTTGAGCACATCAAATCTTCCATTGCCGCTTCTCTGTGTC
 CCTTATCCGCACTTCCCAGCTCACAGCACTGACAACCGTATCATCTCCAGGCTCTCCGCACCTCTAT
 GTGCTGGCCGCGAGCCAGGCTTCTAGTGCTGTGGATGTGGACACAAACACGCCCTGCTATGCCCTCT
 TAGAAGTTACCTACAAGGGCACTCAGTGGTATGAACAAACCAAAGAAGAAATTGATGGCTCTACCTTCT
 TCCAGAATCCATCTTTTAAAGCAGATTAAGTAAAAGGCCCAAGATACTGGGAACTGCTCATAGATTTA
 AGCAAAGGAACACAACACTTGAAGTCCATCCTTTCCAAGGATGGGTTTTATATGTTAACTCCGGGCGG

GTCAGCTCTCCTACAAAGAAGATCCAATGGGATGGCAAAGTTTGTGGCTCAGACTGTTGCTAACAGGAA
 CTCTGAAGCCCGGGCTTTCAAGCCAGAAACAATCTCAGCATTCACTTCTGATCCAGCACTTCTGTCA
 GCTGAATATTTCTGCAAGCCAACGTGAACATGGGTGAGAAACAGGAAATTTGGATCTCTTTTCTTCA
 TACTCTATGAATGTGTTACCCAGGAGACCCAGAGATGTTGCCTGCATACATAGCAATGGATCAGGCTA
 AAGAAGACTTGGGAGAAGAGAAAATGTCTGAGACTTCTGAACCTTGGCAGATAAAGTTGGTGTAGAGTT
 TTCAGTCCCGAAGCCATCAGGAGCGGCTGCAGAACACCCTAAGCGGGGGCTTTTATGAACCTCGAAT
 TCCTCCCTGTTGTAAGTGCACCATGATAATACCCTGGACCAGTGGCTACAAGTCGGGGGTGATATGTG
 TGTGCACGCCTACCTCAGCGGGCAGCCCTTGGAGGAATCACAGCTGAGCATGCTGGCCTGCTTCTCGTC
 TACCACCTGTGCCAGCTCCACAGCACCTGCCACCTATAGGACTAGAAGGAGACACAAGCTTTGCTGAAC
 TGCTCTTCAAATTAAGCAGCTAAAAATGCCAGTGCAGCTTTGCTGAGATTGGCTCCTTTGCTTCTTG
 AAATCCACAGCCAATGGTGATG

ACGCGTACGCGGGCCGCTCGAG - GFP Tag - GTTTAA

Protein Sequence:

>RG216524 representing NM_022662
 Red=Cloning site Green=Tags(s)

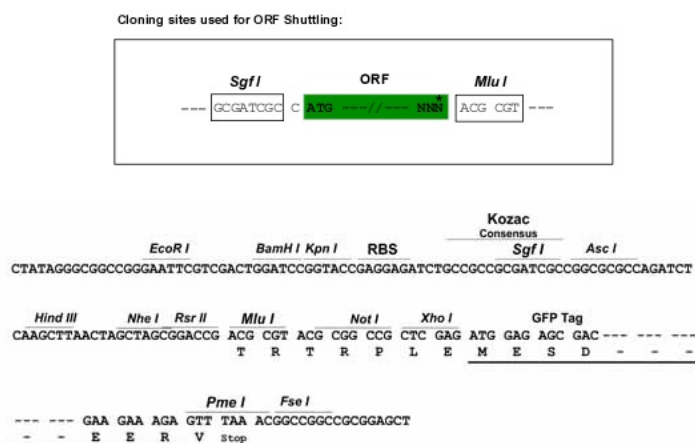
MSNFYEERTTMI AARDLQEFVFPGRDHCKHHPNALNLQRQLQPASELWSSDGAAGLVGSLQEVTIHEKQ
 KESWQLRKGVSEIGEDVDYDEEL YVAGNMVIWSKGSQSALAVYKAF TVDSPVQQALWCDFIISQDKSEK
 AYSSNEVEKICILQSSCINMHSIEGKDYIASLPQVANVWPTKYGLLFERSASSHEVPPGSPREPLPTM
 FSQLHPLDEITPLVCKSGSLFGSSRVQYVDHAMKIVLNTDPSIVM TYDAVQNVH SVWTLRRVKSEEN
 VVLKFSQGGTPQNVATSSSLTAHLRSLSKGDSPTVTPSPFQNYSSIHQSRSSTSSPSLHSRSPSISNMAAL
 SRAHSPALGVHSFSGVQRFNISSHNQSPKRHSISHSPNSNSNGSFLAPETEP IVPPEL CIDHLWTETITNI
 REKNSQASKVFI TSDLCGQKFLCFLVESQLQLRCVKFQESNDKTQLIFG SVTNIPAKDAAPVEKIDTMLV
 LEGSGLVLYTGVVRVGKVFIPGLPAPSLTMSNTMPRPSTPLDGVSTPKPLSKLLGSLDEVVLLSPVPEL
 RDSSKLDHSLYNEDCTFQQLGTIHSIRD PVHNRVTLELSNGSMVRIT IPEIATSELVQTCLQAIKFI LP
 KEI AVQMLVKWYNVHSAPGGPSYHSEWNL FVTCLMNMGYNTDRLAWTRNFDFEGSLSPVIAPKKARPSE
 TGSDDDWEYLLNSDYHQNVESHLLNRSCLSPSEASQMKDEDFSQLSLDSSSTLLFHIPAIFFVLHLVY
 EELKLNLMGEGICSLVELLVLQARDLKGYPVDHYRDYPTLVRTTGGVCTIDPQGTGMHHP SFFTSE
 PPSIYQWVSSCLKGE GMPYPYLPGICERSRLVLSIALYILGDESLVDESSQYLTRIT IAPQKLQVEQ
 EENRFSFRHSTSVSSLAERLVVWMTNVGFTLRDLETLPGIALPIRDAIYHCREQPASDWPEAVCLLIGR
 QDL SKQACEGNLPGKSVLSSDVP SGTETEEEDGMNDMNHEVMSLIWSEDLRVQDVRRLQLQSAHPVRVN
 VVQYPELSDHEFIEEKENRLLQLCQRTMALPVGRGMFTLFSYHPVPTPEPLIPKLNLTGRAPPRNTVDL
 NSGNIDVPPNMTSWASFHNGVAAGLKIAPASQIDSAWIVYNPKKHAELANEYAGFLMALGLNGLTKLAT
 LNIHDYLTGHEMTSIGLLLGVSAAKLGTMDMSITRLLSIHIPALLPPTSTELDVPHNVQVA AVVGIGLV
 YQGT AHRHTAEVLLAEIGRPPGPEMEYCTDRESYSLAAGLALGMVCLGHGSNLIGMSDLNVPEQLYQYMV
 GGHRRFQTMHREKHKSPSYQIKEGDTINVDVTCPGATLALAMIYKTNNSIADWLRAPDTMYLLDFVK
 PEFLLRLTLARCLILWDDILPNSKWVDSNVPQIIRENSISLSEIELPCSEDLNLETL SQAHVYIIAGACL
 SLGFRFAGSENL SAFNCLHKFAKDFMTYLSAPNASVTGPHNLETCLSVVLLSLAMVMAGSGLKVLQLCR
 FLHMKTGGEMNYGFHLAHHMALGLLFLGGGRYSLSTSNSSIAALLCALYPHFAHSTDNRYHLQALRHL
 YLAAEPRLLPVDVDTNTPCYALLEVTYKGTQWYEQTKEELMAPTLLPELHLLKQIKVKGPRYWELLIDL
 SKGTQHLKSI LSKDGLVYVKLRAGQLSYKEDPMGWQSLLAQTVANRNSEARAFKPETISAF TSDPALLSF
 AEYFCKPTVNMGQKQEILDLFSSVL YECVTQETPEMLPAYIAMDQAIRRLGRREMSETSELWQIKLVLEF
 FSSRSHQERLQNHPKRGLFMNSEFLPVVKCTIDNTLDQWLQVGGDMCVHAYLSGQPLEESQLSMLACFLV
 YHSVPAPQHLPPIGLEGSTSAEELLFKFKQLKMPVRALLRLAPLLLGNPQPMVM

TRTRPLE - GFP Tag - V

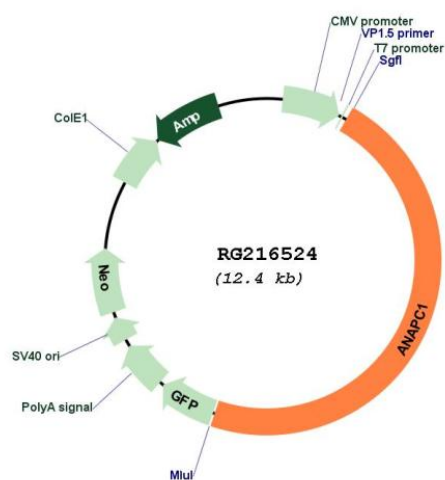
Restriction Sites:

Sgfl-MluI

Cloning Scheme:



Plasmid Map:



ACCN:

NM_022662

ORF Size:

5832 bp

OTI Disclaimer:

The molecular sequence of this clone aligns with the gene accession number as a point of reference only. However, individual transcript sequences of the same gene can differ through naturally occurring variations (e.g. polymorphisms), each with its own valid existence. This clone is substantially in agreement with the reference, but a complete review of all prevailing variants is recommended prior to use. [More info](#)

OTI Annotation:	This clone was engineered to express the complete ORF with an expression tag. Expression varies depending on the nature of the gene.
Components:	The ORF clone is ion-exchange column purified and shipped in a 2D barcoded Matrix tube containing 10ug of transfection-ready, dried plasmid DNA (reconstitute with 100 ul of water).
Reconstitution Method:	<ol style="list-style-type: none">1. Centrifuge at 5,000xg for 5min.2. Carefully open the tube and add 100ul of sterile water to dissolve the DNA.3. Close the tube and incubate for 10 minutes at room temperature.4. Briefly vortex the tube and then do a quick spin (less than 5000xg) to concentrate the liquid at the bottom.5. Store the suspended plasmid at -20°C. The DNA is stable for at least one year from date of shipping when stored at -20°C.
RefSeq:	<u>NM_022662.3</u> , <u>NP_073153.1</u>
RefSeq Size:	7753 bp
RefSeq ORF:	5835 bp
Locus ID:	64682
UniProt ID:	<u>Q9H1A4</u>
Cytogenetics:	2q13
Domains:	PC_rep
Protein Families:	Druggable Genome, Stem cell - Pluripotency
Protein Pathways:	Cell cycle, Oocyte meiosis, Progesterone-mediated oocyte maturation, Ubiquitin mediated proteolysis
Gene Summary:	This gene encodes a subunit of the anaphase-promoting complex. This complex is an E3 ubiquitin ligase that regulates progression through the metaphase to anaphase portion of the cell cycle by ubiquitinating proteins which targets them for degradation. [provided by RefSeq, Dec 2011]