

Product datasheet for **RG216523**

CCDC50 (NM_178335) Human Tagged ORF Clone

Product data:

Product Type:	Expression Plasmids
Product Name:	CCDC50 (NM_178335) Human Tagged ORF Clone
Tag:	TurboGFP
Symbol:	CCDC50
Synonyms:	C3orf6; DFNA44; YMER
Mammalian Cell Selection:	Neomycin
Vector:	pCMV6-AC-GFP (PS100010)
E. coli Selection:	Ampicillin (100 ug/mL)



[View online »](#)

ORF Nucleotide Sequence:

>RG216523 representing NM_178335
 Red=Cloning site Blue=ORF Green=Tags(s)

TTTTGTAATACGACTCACTATAGGGCGGCCGGAATTCGTCGACTGGATCCGGTACCGAGGAGATCTGCC
 GCC**CGGATCGCC**

ATGGCTGAAGTCAGCATCGACCAGTCCAAGCTGCCTGGAGTCAAGGAAGTATGCCGAGATTTTGCTGTCC
 TGGAGGACCACACCTGGCTCACAGCCTGCAGGAACAAGAGATTGAGCATTATTTGGCATCGAACGTTCA
 CGGAACCGTTTTGGTCCAGCATGATCTCCAGTGGCTAAGCAGCTCCAAGAGGAAGATCTGAAAGCGCAG
 GCCCAGCTCCAGAAGCGCTACAAAGACCTTGAACAACAAGACTGTGAAATTGCTCAGGAAATTCAGGAGA
 AGCTGGCTATTGAGGCAGAGAGACGACGCATTCAGGAGAAGAAGGATGAGGACATAGCTCGCCTTTTGA
 AGAAAAGGAGTTACAGGAAGAGAAAAAGAGAAAACACTTTCCAGAGTTCCTGCAACCCGTCCTTAT
 GCAGATAGTTACTATTATGAAGATGGAGACCAACCAGGGTCAAGGAGGGCCAGGGAATGGGTTCTGGAT
 TCTCAAGACCTTGTAGACTCCAAAGAGATGAAAGACTGTGAAGCACAAGAAAGAGAAAACAGAATCC
 ACTGGAGAACTTGAAGAGCCAGAACAACATTGTTTCATCGAAGAGATCCCTGTCATCCTCTAGCTCGGGC
 AAAGGGAGGGACAATCCCATATTAACAATGAGCAGCATGAAAGGAAACGGTCCACTCAGGAGAGGGCTC
 GGAGACCTCTGCTTCCCACGATCAGTGGTGAAGTGTTCCTGAGCACTGAATGTGATGACTGGGAGACTAA
 GATTAACCATCAGACTCGAAATGGGAAAAACAGTCTCGACACCAAGATCGACTTTCACCCAAGTCTCA
 CAAAAAGCAGGGCTTCACTGCAAGGAAGTTGTATATGGGAGGGACCATGGGCAAGGTGAGCACAGAAAA
 GGAGACACAGGCCAGGACTCCTCCATTCTCAGAGAGTGGAGCAGCTCCACCTCCATGACGCAGGAAT
 GAAGCCAAGAGTGATGAAAGAAGCTGTATCTACTCCATCAGAAATGGCCACAGGGATCAGGAATGGTAT
 GATGCTGAAATTGCCAGAAAACGCTCGACTTCTAATGGCTGAAGAAAAGAAAGCTTACAAAAAGCCAA
 GGAGCGGAGAAAATCATCTTTGGACAAAAGCAAGACCCCGAGTGGAAAGCCAAAAACAGCTAAAGCA
 GCAAAATCCAAGTCAAAAGAGAGTGATGAACCTACCATTCTAAGAATGAAAGGCCAGCAGCGCCACCAC
 CACCTATCATGACAGATGGTGAAGATGCGGATTACACTCATTTTACAACCAGCAGAGTTCCACACGGCA
 TTTCTCAAAATCAGAGTCTCTCATAAAGGTTTTTCATTACAAACAT

ACGCGTACGCGGCCGCTCGAG – GFP Tag – GTTTAA

Protein Sequence:

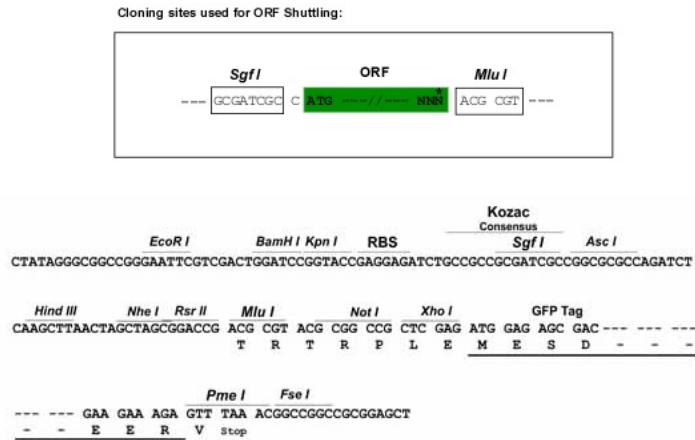
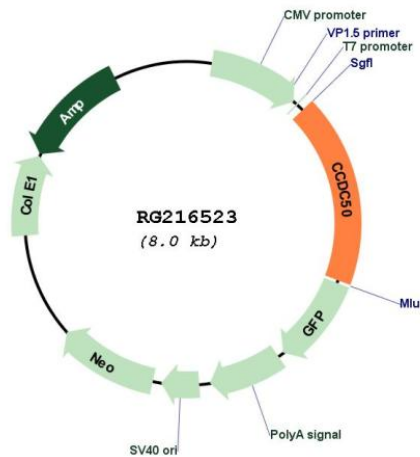
>RG216523 representing NM_178335
 Red=Cloning site Green=Tags(s)

MAEVSIDQSKLPGVKEVCRDFAVLEHDLAHSLEQEQEIEHHLASNVQRNRLVQHDLQVAKLQEEEDLKAQ
 AQLQKRYKDLEQQDCEIAQEIQEKLAIEAERRRIQEKKDEDIARLLQEKELQEEKRKKHFPEFPATRAY
 ADSYYYYEDGDQPGSRRARELGSF SRPCRLQRDGKTVKHKKEKPEHPLENLEEPEQHCSKRSLSSSSSG
 KGRDNPHINNEQHERKRSTQERPRRPLPTISGEVFLSTECDDWETKINHQTRNWEKQSRHQDRLSPKSS
 QKAGLHCKEVVYGRDHGQGEHRKRRHRPRTPPFSEEEQLHLHDAGMKPRVMKEAVSTPSRMAHRDQEWY
 DAEIARKLQEEELLATQVDMRAAQVAQDEEIAARLLMAEEKKAYKKAKEREKSSLDKRKQDPEWPKTAKA
 ANSKSKESDEPHHSKNERPARPPPPIMTDGEDADYHFTNQSSSTRHFSKSESSHKGPHYKH

TRTRPLE – GFP Tag – V

Restriction Sites:

Sgfl-MluI

Cloning Scheme:

Plasmid Map:


ACCN: NM_178335

ORF Size: 1446 bp

OTI Disclaimer: The molecular sequence of this clone aligns with the gene accession number as a point of reference only. However, individual transcript sequences of the same gene can differ through naturally occurring variations (e.g. polymorphisms), each with its own valid existence. This clone is substantially in agreement with the reference, but a complete review of all prevailing variants is recommended prior to use. [More info](#)

OTI Annotation: This clone was engineered to express the complete ORF with an expression tag. Expression varies depending on the nature of the gene.

Components: The ORF clone is ion-exchange column purified and shipped in a 2D barcoded Matrix tube containing 10ug of transfection-ready, dried plasmid DNA (reconstitute with 100 ul of water).

Reconstitution Method:

1. Centrifuge at 5,000xg for 5min.
2. Carefully open the tube and add 100ul of sterile water to dissolve the DNA.
3. Close the tube and incubate for 10 minutes at room temperature.
4. Briefly vortex the tube and then do a quick spin (less than 5000xg) to concentrate the liquid at the bottom.
5. Store the suspended plasmid at -20°C. The DNA is stable for at least one year from date of shipping when stored at -20°C.

RefSeq: [NM_178335.3](#)

RefSeq Size: 2454 bp

RefSeq ORF: 1449 bp

Locus ID: 152137

UniProt ID: [Q8IVM0](#)

Cytogenetics: 3q28

Gene Summary: This gene encodes a soluble, cytoplasmic, tyrosine-phosphorylated protein with multiple ubiquitin-interacting domains. Mutations in this gene cause nonsyndromic, postlingual, progressive sensorineural DFNA44 hearing loss. In mouse, the protein is expressed in the inner ear during development and postnatal maturation and associates with microtubule-based structures. This protein may also function as a negative regulator of NF-κB signaling and as an effector of epidermal growth factor (EGF)-mediated cell signaling. Alternative splicing results in multiple transcript variants encoding distinct isoforms. [provided by RefSeq, Oct 2008]