

Product datasheet for **RG216481**

NALP1 (NLRP1) (NM_033004) Human Tagged ORF Clone

Product data:

Product Type:	Expression Plasmids
Product Name:	NALP1 (NLRP1) (NM_033004) Human Tagged ORF Clone
Tag:	TurboGFP
Symbol:	NALP1
Synonyms:	AIADK; CARD7; CILED; CLR17.1; DEFCAP; DEFCAP-L/S; JRRP; MSPC; NAC; NALP1; PP1044; SLEV1; VAMAS1
Mammalian Cell Selection:	Neomycin
Vector:	pCMV6-AC-GFP (PS100010)
E. coli Selection:	Ampicillin (100 ug/mL)
ORF Nucleotide Sequence:	>RG216481 representing NM_033004 Red=Cloning site Blue=ORF Green=Tags(s)

TTTTGTAATACGACTCACTATAGGGCGGCCGGAATTCGTCGACTGGATCCGGTACCGAGGAGATCTGCC
GCC**CGATCGCC**

ATGGCTGGCGGAGCCTGGGGCCGCTGGCCTGTTACTTGGAGTTCCTGAAGAAGGAGGAGCTGAAGGAGT
TCCAGTCTCTGCTCGCCAATAAAGCGCACTCCAGGAGCTCTTCGGGTGAGACACCCGCTCAGCCAGAGAA
GACGAGTGGCATGGAGGTGGCCTCGTACCTGGTGGCTCAGTATGGGGAGCAGCGGCCTGGGACCTAGCC
CTCCATACCTGGGAGCAGATGGGGCTGAGGTCACTGTGCGCCCAAGCCAGGAAGGGGCAGGCCACTCTC
CCTCATTCCCCTACAGCCAAGTGAACCCACCTGGGGTCTCCAGCCAACCCACCTCCACCGCAGTGCT
AATGCCCTGGATCCATGAATTGCCGGCGGGTGCACCCAGGGCTCAGAGAGAAGGGTTTTGAGACAGCTG
CCTGACACATCTGGACGCCGCTGGAGAGAAATCTCTGCCTCACTCTCTACCAAGCTCTTCAAGCTCCC
CAGACCATGAGTCTCAAGCCAGGAGTCAACCAACGCCCCACATCCACAGCAGTCTGGGGAGCTGGGG
ATCCCCACCTCAGCCAGCCTAGCACCCAGAGAGCAGGAGGCTCCTGGGACCCAATGGCCTCTGGATGAA
ACGTCAGGAATTTACTACACAGAAATCAGAGAAAGAGAGAGAGAAATCAGAGAAAGGCAGGCCCCCAT
GGGCAGCGGTGGTAGGAACGCCCCACAGGCGCACACCAGCCTACAGCCCCACCACCACCATGGGAGCC
TTCTGTGAGAGAGAGCCTCTGTTCCACATGGCCCTGGAAAAATGAGGATTTTAACCAAAATTCACACAG
CTGCTACTTCTACAAAGACCTCACCCAGAAGCCAAGATCCCCTGGTCAAGAGAAGCTGGCCTGATTATG
TGGAGGAGAATCGAGGACATTTAATTGAGATCAGAGACTTATTTGGCCCAGGCCTGGATACCAAGAACC
TCGCATAGTCATACTGCAGGGGGCTGCTGGAATTGGGAAGTCAACTGGCCAGGCAGGTGAAGGAAGCC
TGGGGGAGAGGCCAGCTGTATGGGGACCGCTTCCAGCATGTCTTCTACTTCAGCTGCAGAGAGCTGGCCC
AGTCCAAGGTGGTGAAGTCTCGCTGAGCTCATCGAAAAAGATGGGACAGCCACTCCGGCTCCCATTAGACA
GATCCTGTCTAGGCCAGAGCGGTGCTCTTTCATCCTCGATGGTGTAGATGAGCCAGGATGGGTCTTGACG
GAGCCGAGTTCTGAGCTCTGTCTGCACTGGAGCCAGCCACAGCCGGCGGATGCACTGCTGGGCAGTTTGC
TGGGAAAATACTTCCCAGGCATCCTTCTGATCACGGCTCGGACCACAGCTCTGCAGAACCTCAT



[View online »](#)

TCCTTCTTTGGAGCAGGCACGTTGGGTAGAGGTCTGGGGTTCTCTGAGTCCAGCAGGAAGGAATATTTCT
TACAGATATTTACAGATGAAAGGCAAGCAATTAGAGCCTTTAGGTTGGTCAAATCAAACAAAGAGCTCT
GGGCCCTGTGTCTGTGCCCTGGGTGTCTGGCTGGCCTGCACCTGCCTGATGCAGCAGATGAAGCGGAA
GGAAAACTCACACTGACTTCCAAGACCACCACAACCCCTGTCTACATTACCTTGCCAGGCTCTCCAA
GCTCAGCCATTGGGACCCAGCTCAGAGACCTGTCTCTGGCTGTGAGGGCATCTGGCAAAAAAGA
CCCTTTTTCAGTCCAGATGACCTCAGGAAGCATGGGTAGATGGGGCCATCATCTCCACCTTCTTGAAGAT
GGTATTCTTCAAGAGCACCCCATCCCTGTGAGCTACAGCTTATTACCTCTGTTTCCAAGAGTCTTTT
GCAGCAATGTCTATGTCTTGGAGGATGAGAAGGGGAGAGGTAAACATTCTAATTGCATCATAGATTTGG
AAAAGACGCTAGAAGCATATGGAATACATGGCCTGTTTGGGGCATCAACCACACGTTTCTATTGGCCT
GTTAAGTGATGAGGGGGAGAGAGATGGAGAACATCTTCACTGCCGGTGTCTCAGGGGAGGAACCTG
ATGCAGTGGTCCCGTCCCTGCAGCTGTGCTGCAGCCACACTCTCTGGAGTCCCTCCACTGCTTGTACG
AGACTCGAACAACAAAGTCTGACACAAGTGATGGCCATTTGGAAGAAATGGGCATGTGTGTAGAAAC
AGACATGGAGCTTTAGTGTCACTTTCTGCATTAATTCAGCCGCCACGTGAAGAAGCTTCAGCTGATT
GAGGGCAGGCAGCACAGATCAACATGGAGCCCCACCATGGTAGTCTGTTTCAAGTGGTCCCAGTACAG
ATGCCTATTGGCAGATTCTTTCTCCGTCTCAAGGTACCAGAAACCTGAAGGAGCTGGACCTAAGTGG
AAACTCGCTGAGCCACTCTGCAGTGAAGAGTCTTTGTAAGACCCTGAGACGCCCTCGCTGCCTCCTGGAG
ACCCTGCGGTTGGCTGGCTGTGGCCTCACAGCTGAGGACTGCAAGGACCTTGCCCTTTGGGCTGAGAGCCA
ACCAGACCCTGACCGAGCTGGACCTGAGCTTCAATGTGCTCACGGATGCTGGAGCCAAACACCTTTGCCA
GAGACTGAGACAGCCGAGCTGCAAGCTACAGCGACTGCAGCTGGTGCAGCTGTGGCCTCACGTCTGACTGC
TGCCAGGACCTGGCCTCTGTGCTTAGTGCCAGCCCGCCTGAAGGAGCTAGACCTGCAGCAGAAACACC
TGGATGACGTTGGCGTGCAGTCTCTGTGAGGGGCTCAGGCATCCTGCCTGCAACTCATAACGCTGGG
GCTGGACCAGACAACCTGTAGTGATGAGATGAGGCAGAACTGAGGGCCCTGGAGCAGGAAACCTCAG
CTGCTCATCTTTCAGCAGACGGAACCAAGTGTGATGACCCCTACTGAGGGCCTGGATACGGGAGATGA
GTAAATAGCACATCCTCACTCAAGCGGCAGAGACTCGGATCAGAGAGGGCGGCTTCCCATGTTGCTCAGGC
TAATCTCAAACCTCTGGACGTGAGCAAGATCTTCCCAATTGCTGAGATTGCAGAGGAAAGCTCCCCAGAG
GTAGTACCGGTGGAACCTTGTGCGTGCCTTCTCCTGCCTCTCAAGGGGACCTGCATACGAAGCCTTTGG
GGACTGACGATGACTTCTGGGGCCACGGGGCTGTGGCTACTGAGGTAGTTGACAAAGAAAAGAACTT
GTACCGAGTTCACCTTCCCTGTAGCTGGCTCCTACCCTGGCCCAACACGGGTCTCTGCTTTGTGATGAGA
GAAGCGGTGACCGTTGAGATTGAATCTGTGTGTGGGACCAGTTCCTGGGTGAGATCAACCCACAGCACA
GCTGGATGGTGGCAGGGCCTCTGCTGGACATCAAGGCTGAGCCTGGAGCTGTGGAAGCTGTGCACCTCCC
TCACTTTGTGGCTCTCAAGGGGGCCATGTGGACACATCCCTGTTCCAAATGGCCCACTTTAAAGAGGAG
GGGATGCTCCTGGAGAAGCCAGCCAGGGTGGAGCTGCATCACATAGTTCTGGAAAACCCAGCTTCTCCC
CCTTGGGAGTCCCTGAAAATGATCCATAATGCCCTGCGCTTCAATCCCGTACCTCTGTGGTGTGTCT
TTACCACCGCTCCATCCTGAGGAAGTACCTTCCACCTACCTGATCCCAAGTACTGCTCCATTTCGG
AAGGCCATAGATGATCTAGAAAAGAAATTCAGTTTGTGCGAATCCACAAGCCACCCCGCTGACCCAC
TTTATATGGGCTGTGTTACACTGTGTCTGGGTCTGGTTCAGGGATGCTGGAAATACTCCCAAGGAACT
GGAGCTCTGCTATCGAAGCCCTGGAGAAGACCAGCTGTTCTCGGAGTTCACGTTGGCCACTTGGGATCA
GGGATCAGGCTGCAAGTAAAAGACAAGAAAGATGAGACTCTGGTGTGGGAGCCCTGGTGAACCCAGGAG
ATCTCATGCCTGCAACTACTCTGATCCCTCCAGCCCGCATAGCCGTACCTTACCTCTGGATGCCCGCA
GTTGCTGCACTTTGTGGACCAGTATCGAGAGCAGCTGATAGCCCGAGTGACATCGGTGGAGTTGTCTTG
GACAAACTGCATGGACAGGTGCTGAGCCAGGAGCAGTACGAGAGGGTGTGGCTGAGAACCAGAGGCCCA
GCCAGATGCGGAAGCTGTTGAGCTTGGCCAGTCTGGGACCGGAAGTGCAAAGATGACTCTACCAAGC
CCTGAAGGAGACCCATCCTCACCTCATTATGGAACCTCTGGGAGAAGGGCAGCAAAAAGGGACTCCTGCCA
CTCAGCAGC

ACGCGTACGCGGCCGCTCGAG - GFP Tag - GTTTAA

Protein Sequence: >RG216481 representing NM_033004
 Red=Cloning site Green=Tags(s)

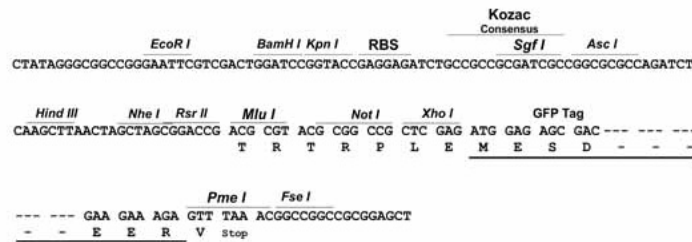
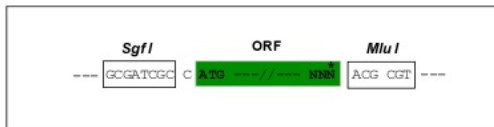
MAGGAWGRLACYLEFLKKEELKEFQLLLANKAHSRSSSGETPAQPEKTSGMEVASYLVAQYGEQRAWDLA
 LHTWEQMLRSLCAQAQEGAGHSPSPFPYSPSEPHLGSPSQPTSTAVLMPWIHELPAAGCTQGSERRVLRQL
 PDTSGRRWREISASLLYQALPSSPDHESPSQESPNAPTSTAVLGSWGSPPQPSLAPREQEAPGTQWPLDE
 TSGIYYTEIREREREKSEKGRPPWAAVVGTPPQAHTSLQPHHHPWEPVRESLCSSTWPWKNEFDNQKFTQ
 LLLLQRPHRSQDPLVKRSWPDYVEENRGLIEIRDLFPGPLDTEPRIVILQGAAGIGKSTLARQVKEA
 WGRGQLYGRDFQHVYFSCRELAQSKVVSLAELIGKDGATPAPIRQILSRPERLLFILDGVDEPGWVLQ
 EPSSELCLHWSQPQPADALLGSLGKTIPEASFLITARTTALQNLIPSLEQARWVEVLGFSESSRKEYF
 YRYFTDERQAIRAFRLVKSNEKELWALCLVPVSWLACTCLMQQMKRKEKLTLSKTTTTLCLHYLAQALQ
 AQPLGPQLRDLCSLAAEWQKTLFSPDDLKHKGLDGAIISTFLKMGILQEHPISYSFIHLCFQEFF
 AAMSYVLEDEKGRGKHSNCIIDLEKTLAAYGIHGLFGASTTRFLLGLLSDGEREMENIFHCRLSQGRNL
 MQWVPSLQLLLQPHSLESLHCLYETRNKTFLTQVMAHFEEMGMCVETDMELLVCTFCIKFSRHVKKLQLI
 EGRQHRSTWSPTMVVLRWVPVTDAYWQILFVSLKVTRNLKELDLSGNSLSHSAVKSLCKTLRRPRCLLE
 TLRLAGCGLTAEDCKDLAFGLRANQTLTELDLSFNVLTDAGAKHLQRLRQPSCKLQRLQLVSCGLTSDC
 CQDLASVLSASPSLKELDLQQNNLDDVGVRLCEGLRHPACKLIRLGLDQTTLSDEMRQELRALEQKPK
 LLIFSRRKPSVMTPTEGLDTGEMSNSTSSLRQRLGSERAASHVAQANLKLDDVSKIFPIAIEAEESSPE
 VVPVELLVCVSPASQGDHLTKPLGTDDDFWGTPVATEVVDKEKNLYRVHFPVAGSYRWPNTGLCFVMR
 EAVTVEIEFCVWDQFLGELNQHSHMWVAGPLLDIKAEPGAVEAVLPHFVALQGGHVDTSLFQMAHFKEE
 GMLLEKPARVELHHIVLENPSFSPLGVLLKMIHNALRFIPVTSVLLYHRVHPEEVTFFHLYLIPSDCSIR
 KAIDDLKMFQFVRIHKPPPLTPLYMGCRTVSGSGSMLEILPKELELCYRSPGEDQLFSEFYVGHLS
 GIRLQVKDKKDETLVWEALVKPGDLMPTTLIPARIAVPSPLDAPQLLHFVDQYREQLIARVTSVEVVL
 DKLHGQVLSQEQYERVLAENTRPSQMRKLFSLSSQSWDRKCKDGLYQALKEHPHILMELWEKGSKGLLPL
 LSS

TRTRPLE - GFP Tag - V

Restriction Sites: SgfI-MluI

Cloning Scheme:

Cloning sites used for ORF Shutting:

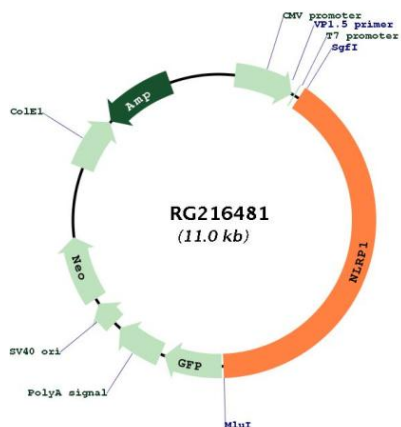


ACCN: NM_033004

ORF Size: 4419 bp

OTI Disclaimer:	The molecular sequence of this clone aligns with the gene accession number as a point of reference only. However, individual transcript sequences of the same gene can differ through naturally occurring variations (e.g. polymorphisms), each with its own valid existence. This clone is substantially in agreement with the reference, but a complete review of all prevailing variants is recommended prior to use. More info
OTI Annotation:	This clone was engineered to express the complete ORF with an expression tag. Expression varies depending on the nature of the gene.
Components:	The ORF clone is ion-exchange column purified and shipped in a 2D barcoded Matrix tube containing 10ug of transfection-ready, dried plasmid DNA (reconstitute with 100 ul of water).
Reconstitution Method:	<ol style="list-style-type: none">1. Centrifuge at 5,000xg for 5min.2. Carefully open the tube and add 100ul of sterile water to dissolve the DNA.3. Close the tube and incubate for 10 minutes at room temperature.4. Briefly vortex the tube and then do a quick spin (less than 5000xg) to concentrate the liquid at the bottom.5. Store the suspended plasmid at -20°C. The DNA is stable for at least one year from date of shipping when stored at -20°C.
RefSeq:	NM_033004.4
RefSeq Size:	5617 bp
RefSeq ORF:	4422 bp
Locus ID:	22861
UniProt ID:	Q9C000
Cytogenetics:	17p13.2
Protein Families:	Druggable Genome
Protein Pathways:	NOD-like receptor signaling pathway
Gene Summary:	This gene encodes a member of the Ced-4 family of apoptosis proteins. Ced-family members contain a caspase recruitment domain (CARD) and are known to be key mediators of programmed cell death. The encoded protein contains a distinct N-terminal pyrin-like motif, which is possibly involved in protein-protein interactions. This protein interacts strongly with caspase 2 and weakly with caspase 9. Overexpression of this gene was demonstrated to induce apoptosis in cells. Multiple alternatively spliced transcript variants encoding distinct isoforms have been found for this gene, but the biological validity of some variants has not been determined. [provided by RefSeq, Jul 2008]

Product images:



Circular map for RG216481