

Product datasheet for **RG216454**

CILK1 (NM_016513) Human Tagged ORF Clone

Product data:

Product Type:	Expression Plasmids
Product Name:	CILK1 (NM_016513) Human Tagged ORF Clone
Tag:	TurboGFP
Symbol:	CILK1
Synonyms:	ECO; EJM10; hICK; ICK; LCK2; MRK
Mammalian Cell Selection:	Neomycin
Vector:	pCMV6-AC-GFP (PS100010)
E. coli Selection:	Ampicillin (100 ug/mL)



[View online »](#)

ORF Nucleotide Sequence:

>RG216454 representing NM_016513
 Red=Cloning site Blue=ORF Green=Tags(s)

TTTTGTAATACGACTCACTATAGGGCGGCCGGAATTCGTCGACTGGATCCGGTACCGAGGAGATCTGCC
 GCC**CGCATCGCC**

ATGAATAGATACACAACAATCAGGCAGCTCGGGATGGAACCTACGGTCCGTCCTGCTGGGAAGAAGCA
 TTGAGTCTGGGGAGCTGATCGCTATTAATAAAGAAAATTTTATTCTGGGAGGAATGCATGAA
 CCTTCGGGAGGTTAAGTCTTTAAAGAAGCTCAACCATGCCAATGTAGTCAAATTAAGAAGTTATCAGG
 GAAATGATCATCTTTATTTTATCTTCGAGTACATGAAGGAAAATCTTACCAGCTCATTAAAGAGAGAA
 ATAAGTTGTTTCTGAGTCTGCTATAAGGAATATCATGTATCAGATATTACAAGGACTCGCATTATTCA
 CAAACACGGCTTCTTTCATCGAGACTTAAAGCCTGAGAACCTCCTCTGCATGGGACCAGAAGCTTGTA
 ATTGCAGACTTTGGTTTGGCCCGAGAAAATACGATCAAACCTCCATATACAGATTATGTATCTACCAGAT
 GGTACAGGGCTCCAGAAGTACTCCTGAGGTCTACCAACTACAGCTCCCCATTGACGTCTGGGCGGTGGG
 CTGCATCATGGCAGAAGTTTACACCCTCAGGCCACTCTTCCCTGGAGCCAGTGAAATTGACACAATATTC
 AAAATTTGCCAAGTGCTGGGGACACAAAAAAGACTGACTGGCCTGAAGGCTATCAACTTCAAGTGCAA
 TGAATTCCTGGCCACAGTGTGTACCAATAACTTAAAGACCTTGATTCCCAATGCTAGCAGTGAAGC
 AGTCCAGCTCCTGAGAGACATGCTTCAGTGGGATCCCAAGAAACGACCAACAGCTAGTCAGGCACCTCGA
 TATCCTTACTTCCAAGTTGGACACCCACTAGGCAGCACCACAAAAACCTTCAAGATTGAGAAAAACCA
 AGAAAGGCATCCTGAAAAGGCAGGCCACCTCCTTATATTAAGCCAGTCCCACCTGCCAGCCACCAGC
 CAAGCCACACACGAATTTCTTACGACAGCATCAAGCCAGCCAGCCCTCTGCATCTCACGTACCCC
 TACAAAGCAGAGGTTCCAGGACAGATCACCAAGCCATCTCCAGGAGGACAAGCCAAGCCCGTTGCTTT
 TCCCATCCCTCCACAACAAGCATCCACAGTCGAAAATCACAGCTGGCCTGGAGCACAAAAATGGTGAGAT
 AAAGCCAAAGAGTAGGAGAAGGTGGGTCTTATTTCCAGGTCAACAAAGGATTGAGATGATTGGGCTGAC
 TTGGATGACTTGATTTAGTCCATCCCTCAGCAGGATTGACCTGAAAAACAAGAAAAGACAGAGTGATG
 ACACTCTCTGCAGGTTTGGAGTGTGGGACCTGAAGCCCTCTGAGCCTGTGGGCACAGGAAACAGTGC
 CCCCACCAGACGTCATATCAGCGGCGAGACACGCCACCCTGAGATCTGCAGCCAAGCAGCACTATTTG
 AAGCACTCTCGATACTTGCCTGGGATCAGTATAAGAAATGGCATACTCTCGAATCCAGGCAAGGAATTTA
 TTCCACCTAATCCATGGTCTAGTCTGGCTGTCTGGAAAATCTCAGGGACAATGTCAGTAATCAGCAA
 AGTAAATTCAGTTGGTTCAGCTCTACAAGTTCTAGTGGACTGACTGGAACTATGTCCCTTCTTTCTG
 AAAAAAGAAATCGTTTCTGCTATGCAGAGGGTACACCTAGCACCTATTCCAGACCCTTCCCTGGTTATT
 CCTCCCTGAAGGCCATGAGACCTCATCCTGGGCGACCATTCTCCACACCAGCCTAGAAGCACTCCTGG
 GTTGATACCACGGCTCCAGCCGCCAGCCAGTGCATGGCCGGACAGACTGGGCTTCCAAGTACGCATCT
 CGGCGA

ACGCGTACGCGGCCGCTCGAG – GFP Tag – GTTTAA

Protein Sequence:

>RG216454 representing NM_016513
 Red=Cloning site Green=Tags(s)

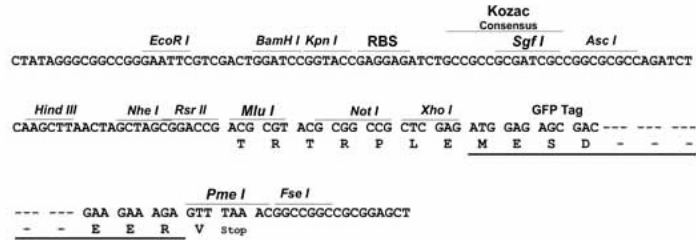
MNRYTTIRQLGDGTYGSVLLGRSIESGELIAIKMKRKFYSWEECMNLREVKSLKLNHANVVKLKEVIR
 ENDHLYFIFEYMKENLYQLIKERNKLPESAIRNIMYQILQGLAFIHKHGFHFDLKPENLLCMGPPELVK
 IADFLGAREIRSKPPYTDYVSTRWYRAPEVLLRSTNYSSPIDVWAVGCIMAEVYTLRPLFPGASEIDTIF
 KICQVLGTPKKTDPPEGYQLSSAMNFRWPQCVNPKLTLIPNASSEAVQLLRDMLQWDPKRPRTASQALR
 YPYFQVGHPLGSTTQNLQDSEKPKGILEKAGPPYIKVPPAQPAPKPHTRISSRQHQASQPPLHLTYP
 YKAEVSRDHPHSLQEDKPSPLLPKSLHNKHPQSKITAGLEHKNGEIKPKSRRRWGLISRSTKDSDDWAD
 LDDLDFSPSLSRIDLKNNKRQSDDTLRFESVLDLKPSEPVGTGNSAPTQTSYQRRDPTLRSAAKQHYL
 KHSRYLPGISIRNGILSNPGKEFIPPNPWSSGLSGKSSGTMSVISKVNSVGSSTSSSGLTGNVYPSFL
 KKEIGSAMQRVHLAIPDPSPGYSSLKAMRPHGRPFHTQPRSTPGLIPRPPAAQPVHGRDWDASKYAS
 RR

TRTRPLE – GFP Tag – V

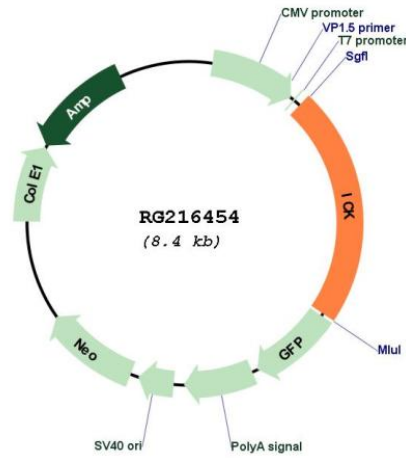
Restriction Sites: SgfI-MluI

Cloning Scheme:

Cloning sites used for ORF Shuttling:



Plasmid Map:



ACCN: NM_016513

ORF Size: 1896 bp

OTI Disclaimer:	The molecular sequence of this clone aligns with the gene accession number as a point of reference only. However, individual transcript sequences of the same gene can differ through naturally occurring variations (e.g. polymorphisms), each with its own valid existence. This clone is substantially in agreement with the reference, but a complete review of all prevailing variants is recommended prior to use. More info
OTI Annotation:	This clone was engineered to express the complete ORF with an expression tag. Expression varies depending on the nature of the gene.
Components:	The ORF clone is ion-exchange column purified and shipped in a 2D barcoded Matrix tube containing 10ug of transfection-ready, dried plasmid DNA (reconstitute with 100 ul of water).
Reconstitution Method:	<ol style="list-style-type: none">1. Centrifuge at 5,000xg for 5min.2. Carefully open the tube and add 100ul of sterile water to dissolve the DNA.3. Close the tube and incubate for 10 minutes at room temperature.4. Briefly vortex the tube and then do a quick spin (less than 5000xg) to concentrate the liquid at the bottom.5. Store the suspended plasmid at -20°C. The DNA is stable for at least one year from date of shipping when stored at -20°C.
RefSeq:	NM_016513.5
RefSeq Size:	6228 bp
RefSeq ORF:	1899 bp
Locus ID:	22858
UniProt ID:	Q9UPZ9
Cytogenetics:	6p12.1
Protein Families:	Druggable Genome, Protein Kinase
Gene Summary:	Eukaryotic protein kinases are enzymes that belong to a very extensive family of proteins which share a conserved catalytic core common with both serine/threonine and tyrosine protein kinases. This gene encodes an intestinal serine/threonine kinase harboring a dual phosphorylation site found in mitogen-activating protein (MAP) kinases. The protein localizes to the intestinal crypt region and is thought to be important in intestinal epithelial cell proliferation and differentiation. Alternative splicing has been observed at this locus and two variants, encoding the same isoform, have been identified. [provided by RefSeq, Jul 2008]