

Product datasheet for **RG216437**

IFT81 (NM_014055) Human Tagged ORF Clone

Product data:

| | |
|---------------------------|--|
| Product Type: | Expression Plasmids |
| Product Name: | IFT81 (NM_014055) Human Tagged ORF Clone |
| Tag: | TurboGFP |
| Symbol: | IFT81 |
| Synonyms: | CDV-1; CDV-1R; CDV1; CDV1R; DV1; SRTD19 |
| Mammalian Cell Selection: | Neomycin |
| Vector: | pCMV6-AC-GFP (PS100010) |
| E. coli Selection: | Ampicillin (100 ug/mL) |



[View online »](#)

**ORF Nucleotide
Sequence:**

>RG216437 representing NM_014055
 Red=Cloning site Blue=ORF Green=Tags(s)

TTTTGTAATACGACTCACTATAGGGCGGCCGGAATTCGTCGACTGGATCCGGTACCGAGGAGATCTGCC
 GCC**CGGATCGCC**

ATGAGTGTCAAATTAATTCATTATGGACAGTCTCAATAAGGAGCCCTTAGGAAGAACTATAATTTAA
 TCACGTTTGATTCTTGGAGCCAATGCAACTATTACAAGTTCTCAGTGATTCTGGCTGAGATTGACCC
 AAAGCAACTTGTGGATATCAGAGAGGAGATGCCAGAGCAGACAGCCAAACGAATGTTGAGCCTTCTTGGT
 ATTCTTAAGTACAAACCTTCAGGAAATGCCACAGATATGAGTACTTTTCGTCAGGGTTTGGTGATTGGAA
 GTAACCTGTAATTTACCCAGTGTCCACTGGCTTCTTCAGAGGACTAATGAACTGAAGAAAAGAGCATA
 TTTAGCTCGTTTTTAATAAACTTGAGGTACCAAGTGAAGTTTCTTCAGGATGAACTGTGGCTGACACC
 AATAAACAGTATGAAGAGTTAATGGAAGCCTTTAAACTTTGCATAAAGAATATGAGCAGCTCAAGATAT
 CTGGATTTTCTACAGCAGAAATAAGAAAGGATATCAGTGAATGGAAGAAGAAAAGGATCAGCTCATTAA
 GAGAGTTGAACATTTGAAGAAAAGGTTGAGACAGCTCAGAATCATCAATGGATGCTTAAATAGCAAGG
 CAACTTCGAGTTGAAAAAGAGAGAGAAGAATATCTTGCACAACAGAAACAGGAACAAAAGAAATCAGCTAT
 TTCATGCAGTGCAAAGATTGCAAAGGTACAAAACAGCTGAAAAGCATGCGCCAAGCTGCAGCAGATGC
 AAAGCCTGAAAGTTAATGAAGAGGCTAGAGGAGGAGATAAAATTTAATTTATATATGGTAACTGAAAA
 TTTCTAAAGAATTAGAAAAAAGAAAAGGAATTACATTTTTTACAAAAAGTAGTTTCAGAGCCAGCTA
 TGGGCCATTCTGATCTTCTTGAAGTTGAATCTAAAATAAATGAAATAAACACAGAAATTAACCAAGTTGAT
 TGAAGAAAATGATGAGAAATGAGCCATTGAAGGCAACTCTCACTGTATAGGCAACAGGCATCTATC
 ATTTCCCGTAAAAAGAAGCCAAAGCTGAGGAACCTCAGGAGGCCAAGGAGAAGTTAGCCAGCCTAGAGA
 GAGAAGCATCAGTAAAGAGAAATCAGACCCGTGAATTTGATGGTACTGAAGTTTTAAAGGGAGATGAGTT
 CAAACGATATGTCAATAAACTTCGAAGCAAGAGTACAGTTTTTCAAAAAGAAGCATCAGATAATAGCTGAA
 CTTAAAGCTGAATTCGGTCTTTTGCAGAGGACTGAAGAAGTTCTTAAGCAACGTCATGAAAAATTCAAC
 AACAACTGCAAATATGGAGGAGAAAAAGGTATATCTGGATATAGTTACACCCAAGAAGAGCTAGAAAAG
 AGTATCTGCACTGAAGAGTGAAGTTGATGAAATGAAAGGACGAACATTGGATGATATGTCTGAAATGGTG
 AAAAACTGTATTCATTGGTATCTGAAAAGAAGTCAAGTCTTGCCTCAGTTATAAAGAGCTACGACAGT
 TGCGTCAAAAATCAAGAACTGACCCAGGAGTGTGATGAAAAGAAATCCAGTATGATAGCTGTGCAGC
 AGGCCTCGAAAGCAATCGGTCAAATTAGAACAGGAAGTTAGAAGACTCCGTGAAGAATGTCTTCAAGAA
 GAAAGTAGATACCATTATACAAATTGTATGATTAGAACCTAGAAGTTCAACTTCGTCGTGCTACTGATG
 AGATGAAGGCATATATCTTCTGATCAACAAGAAAAAGAAAGGCAATTAGGGAACAGTATACCAAAAA
 TACTGCTGAACAAGAAAACCTTGAAAAGAACTTCGGGAAAAACAAAAAGTTATACGAGAAAAGTCATGGT
 CCAAAATAGAAACAAGCAAAAATGTGGCGTGATTTGGAACAATTAATGGAATGTAAGAAACAGTGTCTTC
 TGAACAACAAGCCAACTTCCATTGGTCAGGTAATTCAGGAGGGTGGGGAGGACCGGCTAATACTG

ACGCGTACGCGGCCGCTCGAG - GFP Tag - GTTTAA

Protein Sequence: >RG216437 representing NM_014055
 Red=Cloning site Green=Tags(s)

```
MSDQIKFIMDSL NKEPFRKYNLITFDSLEPMQLLQVLSVLAEIDPKQLVDIREEMPEQTAKRMLSLLG
ILKYKPSGNATDMSTFRQGLVIGSKPVIYPVLHWLLQRTNELKKRAYLARFLIKLEVPSEFLQDETVADT
NKQYEELMEAFKTLHKEYEQLKISGFSTAEIRKDISAMEEEKDQLIKRVEHLKRVETAQNHQWMLKIAR
QLRVEKEREYLAQQKQEQKNQLFHAVQRLQRVQNQLKSMRQAAADAKPESLMKRLEEEIKFNLYMVTEK
FPKELENKKELHFLQKVVSEPMGHSDDLLELESKINEINTEINQLIEKKMMRNEPIEGKLSLYRQQASI
ISRKKEAKAEELQEAKEKLASLEREASVKRNQTRFDGTEVLKGDEFKRYVNKLRSKSTVFKKKHQIIAE
LKA EFGLLQRTEELLQRHENIQQLQTMEKKGISGYSYQEEELERSALKSEVDEMKGRTLDDMSEMV
KKLYSLVSEKKSALASVIKELRQLRQKYQELTQECDEKKSQYDSCAAGLESNRSKLEQEVRRREECLQE
ESRYHYTNCMIKNLEVLRRATDEMKA YISSDQEQKRAIREQYTKNTAEQENLGKKLREKQKVIRESHG
PNMKQAKMWRDLEQLMECKKQCFLKQSQTSIGQVIQEGGEDRLIL
```

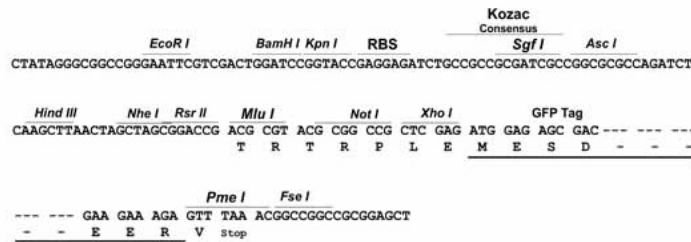
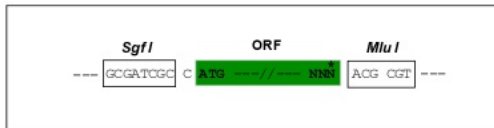
TRTRPLE - GFP Tag - V

Chromatograms: https://cdn.origene.com/chromatograms/ja3053_d02.zip

Restriction Sites: SgfI-MluI

Cloning Scheme:

Cloning sites used for ORF Shuttling:



ACCN: NM_014055

ORF Size: 2028 bp

OTI Disclaimer: Due to the inherent nature of this plasmid, standard methods to replicate additional amounts of DNA in E. coli are highly likely to result in mutations and/or rearrangements. Therefore, OriGene does not guarantee the capability to replicate this plasmid DNA. Additional amounts of DNA can be purchased from OriGene with batch-specific, full-sequence verification at a reduced cost. Please contact our customer care team at custsupport@origene.com or by calling 301.340.3188 option 3 for pricing and delivery.

The molecular sequence of this clone aligns with the gene accession number as a point of reference only. However, individual transcript sequences of the same gene can differ through naturally occurring variations (e.g. polymorphisms), each with its own valid existence. This clone is substantially in agreement with the reference, but a complete review of all prevailing variants is recommended prior to use. [More info](#)

OTI Annotation: This clone was engineered to express the complete ORF with an expression tag. Expression varies depending on the nature of the gene.

Components: The ORF clone is ion-exchange column purified and shipped in a 2D barcoded Matrix tube containing 10ug of transfection-ready, dried plasmid DNA (reconstitute with 100 ul of water).

Reconstitution Method:

1. Centrifuge at 5,000xg for 5min.
2. Carefully open the tube and add 100ul of sterile water to dissolve the DNA.
3. Close the tube and incubate for 10 minutes at room temperature.
4. Briefly vortex the tube and then do a quick spin (less than 5000xg) to concentrate the liquid at the bottom.
5. Store the suspended plasmid at -20°C. The DNA is stable for at least one year from date of shipping when stored at -20°C.

RefSeq: [NM_014055.4](#)

RefSeq Size: 3118 bp

RefSeq ORF: 2031 bp

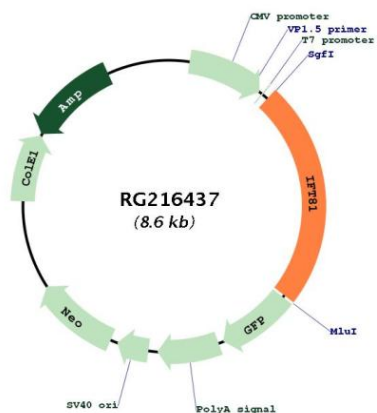
Locus ID: 28981

UniProt ID: [Q8WYA0](#)

Cytogenetics: 12q24.11

Gene Summary: The protein encoded by this gene, together with IFT74, forms a tubulin-binding module of intraflagellar transport complex B. This module is involved in transport of tubulin within the cilium, and the encoded protein is required for ciliogenesis. Mutations in this gene are a cause of short-rib polydactyly syndromes. [provided by RefSeq, Dec 2016]

Product images:



Circular map for RG216437