

## Product datasheet for **RG216388**

### CDCA2 (NM\_152562) Human Tagged ORF Clone

#### Product data:

Product Type:	Expression Plasmids
Product Name:	CDCA2 (NM_152562) Human Tagged ORF Clone
Tag:	TurboGFP
Symbol:	CDCA2
Synonyms:	PPP1R81; Repo-Man
Mammalian Cell Selection:	Neomycin
Vector:	pCMV6-AC-GFP (PS100010)
E. coli Selection:	Ampicillin (100 ug/mL)
ORF Nucleotide Sequence:	>RG216388 representing NM_152562 Red=Cloning site Blue=ORF Green=Tags(s)

TTTTGTAATACGACTCACTATAGGGCGGCCGGAATTCGTCGACTGGATCCGGTACCGAGGAGATCTGCC  
GCC**CGATCGCC**

ATGGATGCCAATTCAAAAGACAAGCCCCCTGAAACCAAGGAGTCTGCAATGAATAATGCTGGAAATGCCT  
CTTTCATTTTGGAACTGGGAAGATTGTGACTCCTCAGAAGCATGCCGAATTACCTCCTAATCCTTGCAC  
ACCAGATACTTTAAATCACCTTTGAACTTTTCCACAGTAACCGTAGAGCAATTGGGAATTACACCTGAA  
AGCTTTGTTAGGAACTCTGCAGGAAAGTCATCCTACCTAAAAATGTAGACGACGTTCTGCAGTCG  
GTGCTCGGGGCTCTCCTGAAACAAACCATCTGATTCGTTTCATTGCTCGGAGCAAAATATAAAGAATGC  
TAGGAAATCTCCTTTGGACAAGATTCTCCTTCCAGGGCAGCCCTGCACTGTATCGAAATGTTAACT  
TTAAGAGAACGAATATCAGCCTTCCAGTCAGCTTTTCACTCCATAAAGGAAAACGAGAAAATGACCGGCT  
GTCTGGAATTCTCAGAGGCAGGAAAAGAGTCCGAGATGACAGACTTGACCAGAAAGGAAGGTCTCAGCGC  
TTGCCAGCAGTCTGGGTTCCCTGCAGTGTGTCTCCAAACGTCGGAGAAATCCTATCAGAGAGACTCT  
GATGAAAATCTGACGGATGCTGAAGGAAAAGTAATTGGTCTCCAGATATCAATATTGATACAGACAGAG  
CATGTGCAGTTGAAACTTCTGTAGATCTTTCTGAGATATCATCTAACTTGGTTCAACACAGTCTGGATT  
TTTAGTTGAAGAGTCTCTTCCCCTTTAGAGCTCACAGAGACTTCAAATGCACTAAAGGTTGCTGACTGT  
GTAGTGGGCAAAGGATCAAGTGATGCCGTTTCGCTGACACGTTACAGCAGAAGTGAGCTCAGACGCAG  
TCCTGATGTCAGGTACCAGCTACTCCAGCTGCAGGAGGACCTTCCACCCCAAGACCTTTTGTACT  
TCGTTCTGTAAGAAACCCTCTGTTAAGATGTGTCTAGAGAGCTTACAGGAACACTGTAACAACCTC  
TATGATGATGATGGGACTCATCCGAGCTTAATCTCAAATCTCCAAACTGTTGCAAAGAGAAAGAAGCAG  
AAGATGAAGAAAATTTGAAGCACCTGCCTTTCTAAATATGAGGAAGAGGAGAGAGTACTTTTGGAGA  
GGACTTAAGCCCGAAGTGTGTTGATGAATCTTTGCCAGCAAATACTCCATTGCGTAAAGGAGGAACCT  
GTTTGTAAAAAGACTTCAGTGGTCTCAGTTCCTGCTGCTTGGAGCAGTACCTGTTCTGAGCCATTAC  
CTCAACCAGATTTGATGACAAGGGGAGAACTTGAACAATAGAACCACTTCAAGTATCATTGCGGT  
TCTCAGTTCCTAATAAATCATCAATCTGAGACCCTTTCAGGCACTGATACCTTTAGTCTTCAAAT



[View online »](#)

AACCATGAGAAAATATCCTCTCCTAAAGTTGGTAGAATAACAAGGACTTCTAACAGAAGAAATCAATTGG  
 TCAGTGTGTAGAAAGAGAGTGTGGCAACTTATTGAATACAGAAGTTCAGCCTTGTAAAGAAAAGAAAAT  
 TAATAGGAGGAAGTCTCAAGAAACAAAGTGTACAAAGAGAGCACTTCTAAGAAGAGTCAGGTTTTAAAA  
 AGTTGCAGAAAGAAAGAAAGGAAAGGAAAGAAAGTGTTCAGAAATCTTTATATGGGGAAAGAGACATTG  
 CTTCTAAGAAGCCCCTCCTCAGTCTATTCCCAGCTGCCTGAAGTCCCTGAGATGACACCTTCCATTCC  
 GAGCATCCGAAGACTGGGTTTCAGGTTATTTTCAGTTCAAATGGCAAACCTGGAAGAAGTGAAGACTCCTAAA  
 AATCCAGTGAAAAGAAAGGATCTTTTTCGTCATGACCCAGATTTGCATATGCATCAAGGCTATGATAAAT  
 ATGATGTCTCTGAATTCTGCTCTTATATAAAAAGTTCCTCATCGCTTGGCAATGCTACTTCTGATGAAGA  
 TCCAAATACAAATATAATGAACATTAATGAAAATAAAAATATTCCAAAAGCAAAAAATAAGTCAGAAAGT  
 GAAAATGAACAAAAGCTGGAAGTACAGTCTGTTTCTGTGCTTCTGTAAGTGAAGAAGTGTGGCAT  
 CAGATAGTCCCAAACCTGCTCTGACCCTGCAGCAGGGTCAAGAATTTTCTGCTGGTGTCAAATGCAGA  
 AAACCTTTGTGAGTCTTTAAAAATTTACCAGATTTAACATAAAGTGTGAAAGAAAGGATGACTTCTTA  
 GGAGCTGCAGAAGGAAAAGTGAATGCAATCGTTAATGCCTAATCACAAAAGACTGTCATTGTTTAG  
 GAGATGTCTTAATTGAAAATACGAAAGAATCTAAAAGCCAGAGTGAAGGATTTGGGAAGAAAACCCATGGA  
 AAGTAGCAGTGTGTGAGTTGCAGAGACAGGAAAGATAGAAGACGTTCCATGTGTTATTCTGATGGTCTGA  
 AGTTTACATTTGGAAAAAATGGAATCACACACCATCCTCCAGTGTGGGAGCTCTGTAGAAATAGTT  
 TAGAAAATTTGAACTGTTTAAAGATTTGTCTGATGCCATTGAGCAAACCTTTCAGAGGAGAAAATAGTGA  
 AACCAAAGTGCAGCTAGCACGAGGCTACAGAAGGATTTAGAAAACGAAGGTCTTGTATGGATTTCACTT  
 CCACTTCTTCCACTTCCAAAAAGCCAAAAGAAGAACAATATGTACATTTGACAGCAGTGGATTTGAAA  
 GTATGTCTCCATAAAAAGAACTGTGCTCTCCAGACAAAACCGCAGATGGCACCTCCCGTCTCAGATCC  
 AGAAAACAGCCAGGGCCCTGCTGCTGGTCTTCCGATGAACCTGGTAAGAGGAGGAAGAGCTTTGTATA  
 TCTACACTTCAAATACTAAAGCCACTTCCAGTTCAAAGGCTACCGGAGAAGATCCTCTCTTAATGGGA  
 AGGGAGAGAGCTCTGACTGCCTTGGAAAGGATTGAACATAATGGAGAAAGAAAGCAG

ACGCGTACGCGGCCGCTCGAG - GFP Tag - GTTTAA

**Protein Sequence:**

>RG216388 representing NM\_152562  
 Red=Cloning site Green=Tags(s)

MDANSKDKPPETKESAMNAGNASFILGTGKIVTPQKHAELPPNPCTPDTFKSPLNFSTVTEVQLGITPE  
 SFVRNSAGKSSSYLKKCRRRSVAVGARGSPETNHLIRFIARQQNIKNARKSPLAQDSPSQGSPALYRNVNT  
 LRERISAFQSAFHHSIKENEKMTGCLFSEAGKESEMDDLTRKEGLSACQQSGFPAPVLSKRRIISYQRDS  
 DENLTD AEGKVIQLQIFNIDTRACAVETSVDLSEISSKLGSTQSGFLVEESLPLSEL TETSNALKVADC  
 VVGKGSDDAVSPDFTAEVSSDAVPDVRS PATPACRRDLPTPKTFVLRV LKKPSVKMCLES LQEHENNL  
 YDDDGTHPSLISNLPNCCKEKEAEDEENFEAPAF LNMRRKRKRVTFGEDLSPEVFDES L PANTPLRKG GTP  
 VCKKDF SGLSSLLLEQSPVPELPQPDFDDKGENLENI EPLQVSFAVLSSPNKSS ISETLSGTDTFSSSN  
 NHEKISSPKVGRITRTSNRRNQLVSVVEESVCNLLNTEVQPCKEKKINRRKSQETKCTKRALPKKSQV LK  
 SCRKKKGGKKSQKSLYGERD IASKKPLLSP IPELPEVPEMTPSIPSI RRLGSGYFSSNGKLEEVKTPK  
 NPVKRKDLLRHDPDLHMHQGYDKYDVSEFCSYIKSSSSLGNATSD EDPNTNIMNINENKNIPKAKNKSES  
 ENEPKAGTDSVSCASVTEERVA S DSPKPALTLQQGQEF SAGGQNAENLCQFFKI SPDLNIK CERKDDFL  
 GAAEGKLQCNRLMPNSQKDCHCLGDVLI ENTKESSQS EDLGRKPMESSV VSCRDRKDRRRSMCYSDGR  
 SLHLEKNGNHTPSSSVGSSVEISLENS E LFKDLSDAIEQTFQRRNSETKVRSTR LQKDLENEGLVWISL  
 PLPSTSQKAKRRTICTFDSSGFESMSP IKETVSSRQKPMAPPVSDPEN SQGPAAGSSDEPGKRRKSF CI  
 STLANTKATSQFKGYRRRSSLNGKGESSLTALERIEHNGERKQ

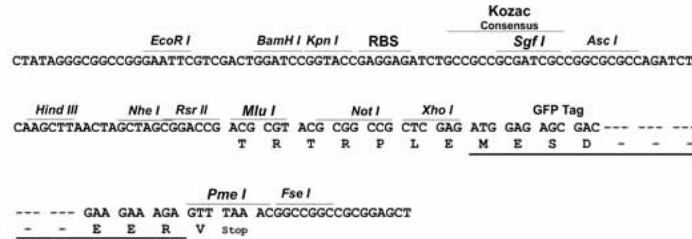
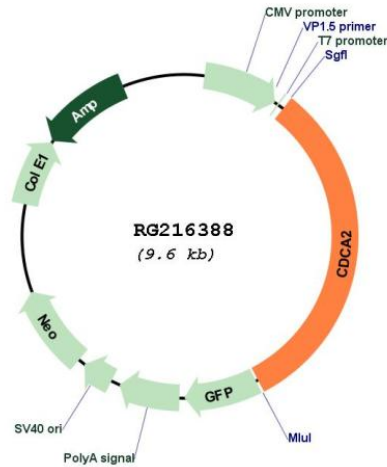
TRTRPLE - GFP Tag - V

**Restriction Sites:**

Sgfl-MluI

**Cloning Scheme:**

Cloning sites used for ORF Shutting:


**Plasmid Map:**

**ACCN:** NM\_152562

**ORF Size:** 3069 bp

**OTI Disclaimer:** The molecular sequence of this clone aligns with the gene accession number as a point of reference only. However, individual transcript sequences of the same gene can differ through naturally occurring variations (e.g. polymorphisms), each with its own valid existence. This clone is substantially in agreement with the reference, but a complete review of all prevailing variants is recommended prior to use. [More info](#)

<b>OTI Annotation:</b>	This clone was engineered to express the complete ORF with an expression tag. Expression varies depending on the nature of the gene.
<b>Components:</b>	The ORF clone is ion-exchange column purified and shipped in a 2D barcoded Matrix tube containing 10ug of transfection-ready, dried plasmid DNA (reconstitute with 100 ul of water).
<b>Reconstitution Method:</b>	<ol style="list-style-type: none"><li>1. Centrifuge at 5,000xg for 5min.</li><li>2. Carefully open the tube and add 100ul of sterile water to dissolve the DNA.</li><li>3. Close the tube and incubate for 10 minutes at room temperature.</li><li>4. Briefly vortex the tube and then do a quick spin (less than 5000xg) to concentrate the liquid at the bottom.</li><li>5. Store the suspended plasmid at -20°C. The DNA is stable for at least one year from date of shipping when stored at -20°C.</li></ol>
<b>RefSeq:</b>	<a href="#">NM_152562.4</a>
<b>RefSeq Size:</b>	3735 bp
<b>RefSeq ORF:</b>	3072 bp
<b>Locus ID:</b>	157313
<b>UniProt ID:</b>	<a href="#">Q69YH5</a>
<b>Cytogenetics:</b>	8p21.2
<b>Gene Summary:</b>	This gene encodes a targeting subunit of the cell-cycle associated protein, protein phosphatase 1, with a role in targeting this protein to chromatin during anaphase. These two proteins comprise a phosphatase complex that is involved in nuclear envelope reformation and regulation of the DNA damage response. The encoded protein may also play a role in cancer progression. Alternative splicing results in multiple transcript variants. [provided by RefSeq, Dec 2015]