

Product datasheet for **RG216373**

LRRK2 (NM_198578) Human Tagged ORF Clone

Product data:

Product Type:	Expression Plasmids
Product Name:	LRRK2 (NM_198578) Human Tagged ORF Clone
Tag:	TurboGFP
Symbol:	LRRK2
Synonyms:	AURA17; DARDARIN; PARK8; RIPK7; ROCO2
Mammalian Cell Selection:	Neomycin
Vector:	pCMV6-AC-GFP (PS100010)
E. coli Selection:	Ampicillin (100 ug/mL)
ORF Nucleotide Sequence:	>RG216373 representing NM_198578 Red=Cloning site Blue=ORF Green=Tags(s)

TTTTGTAATACGACTCACTATAGGGCGGCCGGAATTCGTCGACTGGATCCGGTACCGAGGAGATCTGCC
GCC**CGATCGCC**

ATGGCTAGTGGCAGCTGTCAGGGGTGCGAAGAGGACGAGGAACTCTGAAGAAGTTGATAGTCAGGCTGA
ACAATGTCCAGGAAGGAAAACAGATAGAAACGCTGGTCCAATCCTGGAGGATCTGCTGGTGTTCACGTA
CTCCGAGCAGCCTCCAAGTTATTTCAAGGCAAAAATATCCATGTGCCTCTGTTGATCGTCTGGACTCC
TATATGAGAGTCGCGAGTGTGCAGCAGTGGGTGGTCACTTCTGTGCAAATTAAGAAGTCTGCCAG
GTACAATGCAAAGCTTAATGGGACCCAGGATGTTGAAATGATTGGGAAGTCCTGGTGTTCACCAATT
GATTTCTAAAATGCTAACAGTTCATAATGCCAGTGTAACCTTGTCAAGTATTGGACTGAAGACCTTAGAT
CTCCTCCTAACTTCAGGTAATAACACCTTGTGATACTGGATGAAGAAAGTATATTTTCATGTTAATTT
TTGATGCCATGCACTCATTTCAGCCAATGATGAAGTCCAGAACTTGGATGCAAAGCTTACATGTGCT
GTTTGAGAGAGTCTCAGAGGAGCAACTGACTGAATTTGTTGAGAACAAGATTATATGATATTGTTAAGT
GCGTTAACAAATTTAAAGATGAAGAGGAAATTTGCTTCATGTGCTGCATTGTTTACATTCCTAGCGA
TTCCTTGCAATAATGTGGAAGTCTCATGAGTGGCAATGTCAGGTGTTATAATATTGGTGGGAAGCTAT
GAAAGCATTCCCTATGAGTGAAGAATTAAGAAGTGAAGTGTGCTTTGCTCCATAGGCTTACATTAGGT
AATTTTTCAATATCCTGGTATTAACGAAGTCCATGAGTTTGGTGAAGCTGTCAGCAGTACCCAG
AGAATGCAGCATTGCAGATCTCAGCGCTCAGCTGTTGGCCCTCCTCACTGAGACTATTTTCTAAATCA
AGATTTAGAGGAAAAGAATGAGAATCAAGAGAATGATGATGAGGGGAAGAAGATAAATGTTTTGGCTG
GAAGCCTGTTACAAAGCATTAACTGGCATAGAAAGAACAAGCACGTGCAGGAGGCCGATGCTGGGCAC
TAAATAATCTCCTTATGTACAAAACAGTTTACATGAGAAGATTGGAGATGAAGATGGCCATTTCCAGC
TCATAGGGAAGTATGCTCTCCATGCTGATGCATTCTTCATCAAAGGAAGTTTTCCAGGCATCTGCGAAT
GCATTGTCAACTCTTTAGAACAAAATGTTAATTTAGAAAAATACTGTTATCAAAGGAATACACCTGA
ATGTTTTGGAGTTAATGCAGAAGCATATACATTCTCCTGAAGTGGCTGAAAGTGGCTGAAAATGCTAAA
TCATCTTTTTGAAGGAAGCAACACTTCCCTGGATATAATGGCAGCAGTGGTCCCCAAAATACTAACAGTT



[View online »](#)

ATGAAACGTCATGAGACATCATTACCAGTGCAGCTGGAGGCGCTTCGAGCTATTTTACATTTTATAGTGC
 CTGGCATGCCAGAAGAATCCAGGGAGGATACAGAATTTTCATCATAAGCTAAATATGGTAAAAAACAGTG
 TTTCAAGAATGATATTCACAACTGGTCTAGCAGCTTTGAACAGGTTTCATTGGAATCCTGGGATTCAG
 AAATGTGGATTAAGAAATTTCTTCTATTGTACATTTTCTGATGCATTAGAGATGTTATCCCTGGAAAG
 GTGCTATGGATTCAGTCTTACACACTGCAGATGTATCCAGATGACCAAGAAATTCAGTGTCTGGGTTT
 AAGTCTTATAGGATACTTGATTACAAAGAAGAATGTGTTTCATAGGAACTGGACATCTGCTGGCAAAAT
 CTGGTTTCCAGCTTATACCGATTAAAGGATGTTGCTGAAATACAGACTAAAGGATTTTCAGACAATCTTAG
 CAATCCTCAAATGTGAGCATCTTTTCTAAGCTGCTGGTGCATATTCATTTGACTTAGTAATATTCCA
 TCAAATGTCTTCCAATATCATGGAACAAAAGGATCAACAGTTTCTAAACCTCTGTTGCAAGTGTGTTGCA
 AAAGTAGCTATGGATGATTACTTAAAAATGTGATGCTAGAGAGAGCGTGTGATCAGAATAACAGCATCA
 TGGTTGAATGCTTCTTATTGGGAGCAGATGCCAATCAAGCAAAGGAGGGATCTTCTTAATTTGTCA
 GGTATGTGAGAAAGAGAGCAGTCCCAAATTTGGTGAACCTTACTGAATAGTGGATCTCGTGAACAAGAT
 GTACGAAAAGCGTTGACGATAAGCATTGGGAAAGGTGACAGCCAGATCATCAGCTTGCTCTTAAGGAGGC
 TGGCCCTGGATGTGGCAACAATAGCATTGCTTGGAGGATTTGTATAGGAAAAGTTGAACCTTCTTG
 GCTTGGTCTTTATTTCCAGATAAGACTTCTAATTTAAGGAAACAAAATAATAGCATCTACACTAGCA
 AGAATGGTGATCAGATATCAGATGAAAAGTGTGTGGAAGAAGGAACAGCCTCAGGCAGCGATGGAAT
 TTTCTGAAGATGTGCTGTCTAAATTTGATGAATGGACCTTTATTCCTGACTCTTCTATGGACAGTGTGT
 TGCTCAAAGTGATGACCTGGATAGTGAAGGAAGTGAAGGCTCATTTCTTGTGAAAAAGAAATCTAATTC
 ATTAGTGTAGGAGAATTTTACCAGATGCCGATTACAGCGTTGCTCACCAAATTTGCAAAGACATTCCA
 ATTCCTTGGGGCCCATTTTTGATCATGAAGATTTACTGAAGCGAAAAAGAAAAATATTATCTTCAGATGA
 TCACTCAGGTCATCAAACTTCAATCCCATATGAGGCATTGACAGCATTTCTTCTCTGGCTTCTGAG
 AGAGAATATATTACATCACTAGACCTTTGAGCAATGAACTAAGAGATATTGATGCCCTAAGCCAGAAAT
 GCTGTATAAGTGTTCATTTGGAGCATCTTGAAGAGCTGGAGCTTACCAGAATGCATCAGCAGCTTTCC
 ACAACAGCTATGTGAAACTCTGAAGAGTTTGACACATTTGGACTTGCACAGTAATAAATTTACATATTT
 CCTTCTATTTGTTGAAAATGAGTTGATTGCTAATCTTGATGTCTCTCGAAATGACATTGGACCCTCAG
 TGGTTTTAGATCTACAGTGAAATGTCCAACCTCTGAAACAGTTTAACTGTCTATAAACCAGCTGTCTTT
 TGTACCTGAGAACCTCACTGATGTGGTAGAAGAACTGGAGCAGCTCATTTTAGAAGGAAATAAAATATCA
 GGGATATGCTCCCTTGGAGACTGAAGGAACTGAAGATTTTAACTTAGTAAGAACCACATTTTATCCC
 TATCAGAGAACTTTCTGAGGCTTGTCTAAAGTGGAGAGTTTTCAGTGCCAGAATGAATTTTCTGCTGC
 TATGCTTTCTGCTCCTTCTATGACAATCCTAAAATATCTCAGAACAATTTTCTGTATTCCAGAA
 GCAATTTTAAATCTTCCACACTTGGGCTTTAGATATGAGCAGCAATGATATTCAGTACCTACCAGGTC
 CCGCACACTGGAATCTTTGAACCTAAGGGAACCTTATTTAGCCATAATCAGATCAGCATCTTGGACTT
 GAGTGA AAAAGCATATTTATGGTCTAGAGTAGAGAACTGCATCTTTCTACAATAAACTGAAAGAGATT
 CCTCTGAGATTGGCTGTCTTGA AAAATCTGACATCTCTGGATGTCAGTTACAACCTGGAACCTAAGATCCT
 TTCCCAATGAAATGGGAAATTAAGCAAAAATAGGGATCTTCTTTGGATGAACTGCATCTTAACTTTGA
 TTTTAAACATATAGGATGTAAAGCCAAAGACATCATAAGGTTTCTTCAACAGCGATTA AAAAGGCTGTG
 CCTTATAACCGAATGAACTTATGATTGTGGGAAACTGGGAGTGGTAAAACCCTTATTGCAGCAAT
 TAATGAAAACCAAGAAATCAGATCTTGGAAATGCAAAGTGCCACAGTTGGCATAGATGTGAAAGACTGGCC
 TCTCAAATAAGAGACAAAAGAAAGAGAGATCTCGTCTAAATGTGTTGGGATTTTGCAGGTCTGAGGAA
 TTCTATAGTACTCATCCCATTTTATGACGCAGCGAGCATTGTACCTTGCTGTCTATGACCTCAGCAAGG
 GACAGGCTGAAGTTGATGCCATGAAGCCTTGGCTCTTCAATATAAAGGCTCGCGCTTCTTCTCCCTGT
 GATTCTCGTTGGCACACATTTGGATGTTTCTGATGAGAAGCAACGCAAAGCCTGCATGAGTAAAATCACC
 AAGGAACTCCTGAATAAGCGAGGGTTCCCTGCCATACGAGATTACCACTTTGTGAATGCCACCGAGGAAT
 CTGATGCTTTGGCAAACTTCGGA AAACCATATAAACGAGAGCCTTAATTTCAAGATCCGAGATCAGCT
 TGTTGTTGGACAGCTGATCCAGACTGCTATGTAGA ACTTGA AAAAATCATTTTATCGGAGCGTAAAAAT
 GTGCCAATGAATTTCCCGTAATTGACCGGAAACGATTATTACA ACTAGTGAGAGAAAATCAGCTGCAGT
 TAGATGAAAATGAGCTTCTCACGCAGTCACTTTCTAAATGAATCAGGAGTCTTCTTCAATTTTCAAGA
 CCCAGCACTGCAGTTAAGTGACTTGTACTTTGTGGAACCCAAGTGGCTTTGTA AAAATCATGGCACAGATT
 TTGACAGTGAAAGTGGAAGTTGTCCAAAACACCTAAGGGAATTTTTCGCGTAGAGATGTGGA AAAAT
 TTCTTTCAAAGAAAAGGAAATTTCCAAAGAACTACATGACACAGTATTTTAAAGCTCTAGAAAATTTCCA
 GATTGCTTTGCCAATAGGAGAAGAATAATTTGCTGGTTCCAAGCAGTTTGTCTGACCACAGGCCTGTGATA
 GAGCTTCCCATTGTGAGAACTGAAATATCATCCGACTATATGAAATGCCTTATTTTCCAATGGGAT

TTTGGTCAAGATTAATCAATCGATTACTTGAGATTTACCTTACATGCTTTCAGGGAGAGAACGAGCACT
 TCGCCCAAACAGAATGTATTGGCGACAAGGCATTTACTTAAATTTGGTCTCCTGAAGCTTATTGTCTGGTA
 GGATCTGAAGTCTTAGACAATCATCCAGAGAGTTTCTTAAAAATTACAGTTCCTTCTGTAGAAAAGGCT
 GTATTCTTTTGGGCAAGTTGTGGACCACATTGATTCTCTCATGGAAGAATGGTTTCTGGGTTGCTGGA
 GATTGATATTTGGTGAAGGAGAACTCTGTTGAAGAAATGGGCATTATATAGTTTTAATGATGGCGAA
 GAACATCAAAAAATCTTACTTGATGACTTGATGAAGAAAGCAGAGGAAGGAGATCTTAGTAAATCCAG
 ATCAACCAAGGCTCACCATTCCAATATCTCAGATTGCCCTGACTTGATTTGGCTGACCTGCCTAGAAA
 TATTATGTTGAATAATGATGAGTTGGAATTTGAACAAGCTCCAGAGTTTCTCCTAGGTGATGGCAGTTTT
 GGATCAGTTTACCGAGCAGCCTATGAAGGAGAAGAAGTGCTGTGAAGATTTTTAATAAACATACATCAC
 TCAGGCTGTTAAGACAAGAGCTTGTGGTCTTTGCCACCTCCACCACCCAGTTTGATATCTTTGTCTGGC
 AGCTGGGATTCGTCCTGGATGTTGGTGTAGGTTAGCCTCCAAGGTTCTTGGATCGCTGCTTCAG
 CAGGACAAAGCCAGCCTCACTAGAACCCTACAGCACAGGATTGCACTCCACGTAGCTGATGGTTGAGAT
 ACCTCCACTCAGCCATGATTATACCGAGACCTGAAACCCACAATGTGCTGCTTTTCACTGTATCC
 CAATGCTGCCATCATTGCAAAGATTGCTGACTACGGCATTGCTCAGTACTGCTGTAGAATGGGGATAAAA
 ACATCAGAGGGCACACCAGGTTTCGTGCACCTGAAGTTCAGAGGAAATGTCATTTATAACCAACAGG
 CTGATGTTTATTCATTTGGTTTACTACTCTATGACATTTTGACAAGTGGAGGTAGAAATAGTAGGGTTT
 GAAGTTTCCAATGAGTTTGATGAATTAGAAATACAAGGAAAATACCTGATCCAGTTAAAGAATATGGT
 TGTGCCCATGGCCTATGGTTGAAAAATTAATTAACAGTGTGTTGAAAGAAAATCCTCAAGAAAGGCCTA
 CTTCTGCCAGGTCTTTGACATTTTGAATTCAGCTGAATTAGTCTGTCTGACGAGACGATTTTATTACC
 TAAAAACGTAATTGTTGAATGCATGGTTGCTACACATCACAACAGCAGGAATGCAAGCATTTGGCTGGGC
 TGTGGGCACCCGACAGAGGACAGCTCTCATTTCTTGACTTAAACTGAAGGATACACTTCTGAGGAAG
 TTGCTGATAGTAGAATATTGTGCTTAGCCTTGGTGCATCTTCTGTTGAAAAGGAAAGCTGGATTGTGTC
 TGGGACACAGTCTGGTACTCTCCTGGTCAATACCGAAGATGGGAAAAAGAGACATACCTAGAAAAAG
 ATGACTGATTCTGTCACTTGTGTTGATTGCAATTCCTTTTCCAAGCAAAGCAAACAAAAAATTTTCTTT
 TGGTTGGAACCGCTGATGGCAAGTTAGCAATTTTTGAAGATAAGACTGTTAAGCTTAAAGGAGCTGCTCC
 TTTGAAGATACTAAATATAGAAATGTCAGTACTCCATTGATGTGTTGAGTGAATCCACAAATCAACG
 GAAAGAAATGTAATGTGGGGAGGATGTGGCACAAGATTTTCTCCTTTTCTAATGATTTACCATTGAGA
 AACTCATTGAGACAAGAACAAGCCAAGTGTCTTATGCAGCTTTCAGTATTCCAACATCATAACAGT
 GGTGGTAGACTGCTCTCTATATTGCTAAGCAAAATAGCCTGTTGTGGAAGTGTGGGATAAGAAAAC
 GAAAACTCTGTGGACTAATAGACTGCGTGCACTTTTTAAGGGAGGTACGGTAAAAGAAAACAAGGAAT
 CAAAACACAAAATGTCTTATTCTGGGAGAGTAAAACCTCTGCCTTCAAGAAACTGCTCTTTGGAT
 AGGAACCTGGAGGAGGCCATATTTACTCCTGGATCTTCAACTCGTCGACTTATACGTGTAATTTACAAC
 TTTTGAATTCGGTCAGAGTCATGATGACAGCACAGCTAGGAAGCCTTAAAAATGTCATGCTGGTATTGG
 GCTACAACCGGAAAAATACTGAAGGTACACAAAAGCAGAAAGAGATACAATCTTGCTTGACCGTTTGGGA
 CATCAATCTCCACATGAAGTGCAAAATTTAGAAAAACACATTGAAGTGAGAAAAGAAATAGCTGAAAAA
 ATGAGACGAACATCTGTTGAG

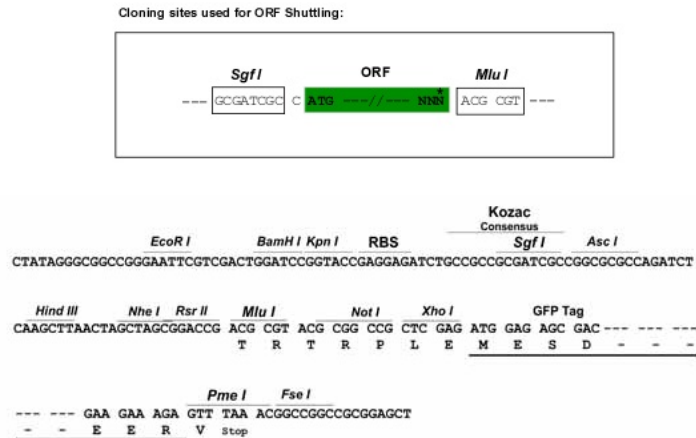
ACGCGTACGCGGCCGCTCGAG - GFP Tag - GTTTAA

Protein Sequence: >RG216373 representing NM_198578
 Red=Cloning site Green=Tags(s)

MASGSCQGCDEEETLKKLIVRLNNVQEGKQIETLVQILEDLLVFTYSEHASKLFQGGKNIHVPLLI VLDS
 YMRVASVQQVGSLLCKLIEVCPGTMQSLMGPQDVGNDEVLGVHQLILKMLTVHNASVNL SVIGLKTLD
 LLLTSGKITLLILDEESDIFMLIFDAMHSFPADEVQKLGCKALHVL FERVSEEQLTEFVENKDYMILLS
 ALTNFKDEEEIVLHVLHCLHSLAIPCNNVEVLSMGNVRCYNIIVVEAMKAFPMSERIQEVSCLLHRLTLG
 NFFNILLVNEVHEFVVKAVQQYPENAALQISALSCLALLTETIFLNQDLEEKNEQENDDGEEDKLFWL
 EACYKALTWRKKNKHVQEAACWALNNLLMYQNSLHEKIGDEDGHFPAHREVMSMLMHSSSKEVFQASAN
 ALSTLLEQNVNFRKILLSKGIHLNVLELMQKHIHSPEVAESGCKMLNHLFEFSNTSLDIMAAVVPKILTV
 MKRHETS LPVQLEALRAILHFIVPGMPESREDETFHHKLNMVKKQCFKNDIHLVLAALNRFIGNPGIQ
 KCGLKVISSIVHFPDALEML SLEGAMDSVLHTLQMPDDQEIQCLGLSLIGYELITKKNVFIGTGHLAKI
 LVSSLYRFKDAEIQTKGFQITLAILKL SASFSKLLVHHSFDLVIFHQSSNIMEQKDDQFLNLCCKCFA
 KVAMDDYLKNVMLERACDQNSIMVECLLLL GADANQAKEGSSLICQVCEKESPPLVELLLNSGSREQD
 VRKALTISIGKDSQIISLLLRRLALDVANNSICLGGFCIGKVEPSWLGPLFPDKT SNLRKQNTIASTLA
 RMVIRYQMKSAVEEGTAGSDGNFSEDVLSKFDEWTFIPDSSMDSVFAQSDDDLDESEGSEGSFLVKKKSNS
 ISVGEFYRDAVLQRCSPLQRHSNSLGPFDHEDLLKRRKILSSDDSLRSSKQLQSHMRHSDSISSLASE
 REYITSLDLSANELRDIDALSQCCISVHLEHLEKLELHQNALTSFPQQLCETLKS LTHLDLHSNKFTSF
 PSYLLKMSCIANLDVSRNDIGPSVVLDPVKCPTLKQFNLSYNQLSFPENLTDVVEKLEQLILEGNKIS
 GICSPLRLKELKILNLSKNHISSENLEACPVEFSFARMNFLAAMPFLPSPMTILKLSQNKFSCEIPE
 AILNPLHLRSLDSSNDIQYLPGPAHWKSLNRELLFSHNQISILDLSEKAYLSRVEKHLHSHNKLKEI
 PPEIGCLENLTSLDVSYNLELRSFPNEMGKLSKIWDLPLDELHLNFDKFKHIGCKAKDIIRFLQQRLLKAV
 PYNRMKLMIVGNTGSGKTLLQQLMKTKKSDLGMQSATVGDVWDWPIQIRDKRKRDLVLNVWDFAGREE
 FYSTHPHMTQRALYLAVYDLSKGQAEVDAMKPWLFNIKARASSSPVILVGTDLVSDKQRKACMSKIT
 KELLNKRGFPAIRDYHFVNATEESDALAKLRKTIINESLNFKIRDQLVVGQLIPDCYVELEKIIISERKN
 VPIEFVPIIDRKRLQLVRENQLQDENELPHAVHFLNESGVLLHFDQPALQLSDLYFVEPKWLCKIMAQI
 LTVKVEGCPKHPKGIISRRDVEKFLSKKRKFPKNYMTQYFKLLEKFQIALPIGEEYLLVPSSLSDHRPVI
 ELPHCENSEIIIRLYEMPYFPMGFWSRLINRLEISPYMLSGRERLRPNRMYWRQGIYLNWSPEAYCLV
 GSEVLDNHPEFSLKITVPSCRKGCILLGQVVDHIDSLMEEWFPGLLEIDICGEGETLLKKWALYSFNDGE
 EHQKILLDDLKKAEEGDLLVNPDPRLTIPISQIAPDLILADLPRNIMLNDELEFEQAPEFLLGDGSF
 GSVYRAAYEGEEVAVKIFNKHTSLRLLRQELVVLCHLHHPSLISLLAAGIRPRLVMELASKGSLDRLLQ
 QDKASLTRLQHRIALHVADGLRYLHSAMIYRDLKPHNVLLFTLYPNAIIAKIADYGI AQYCCRMGIK
 TSEGTPGFRAPEVARGNVIYNQADVYSFGLLLYDILTGGRIVEGLKFPNEFDELEIQGKLPDPVKEYG
 CAPWPMVEKLIKQCLKENPQERPTSAQVFDILNSAELVCLTRRILLPKNVIVECMVATHHNSRNASIWL
 CGHTDRGQLSFLDLNTEGYTSEEVADSRILCLALVHLPVEKESWIVSGTQSGTLLVINTEDGKKRHTLEK
 MTDSVTCLYCNSFSKQSKQNFLLVGTADGKLAIFEDKTVKLGGAAPLILNIGNVSTPLMCLSESTNST
 ERNVMMGGCGTKIFSFSNDFTIQKLIETRTS QLSYAAFSDSNIITVVVDTALYIAKQNSPVVEVWDKKT
 EKL CGLIDCVHFLREVTVKENKESKHKMSYSGRVKTLCLQKNTALWIGTGGGHILLDLSTRRLIRVIYN
 FCNSVRVMMTAQLGSLKNVMLVLGYNRNKTEGTQKQKEIQSCLTVWDINLPHEVQNLKHIIEVRKELAEK
 MRRTSVE

TRTRPLE - GFP Tag - V

Restriction Sites: SgfI-MluI

Cloning Scheme:


ACCN: NM_198578

ORF Size: 7581 bp

OTI Disclaimer: Due to the inherent nature of this plasmid, standard methods to replicate additional amounts of DNA in E. coli are highly likely to result in mutations and/or rearrangements. Therefore, OriGene does not guarantee the capability to replicate this plasmid DNA. Additional amounts of DNA can be purchased from OriGene with batch-specific, full-sequence verification at a reduced cost. Please contact our customer care team at custsupport@origene.com or by calling 301.340.3188 option 3 for pricing and delivery.

The molecular sequence of this clone aligns with the gene accession number as a point of reference only. However, individual transcript sequences of the same gene can differ through naturally occurring variations (e.g. polymorphisms), each with its own valid existence. This clone is substantially in agreement with the reference, but a complete review of all prevailing variants is recommended prior to use. [More info](#)

OTI Annotation: This clone was engineered to express the complete ORF with an expression tag. Expression varies depending on the nature of the gene.

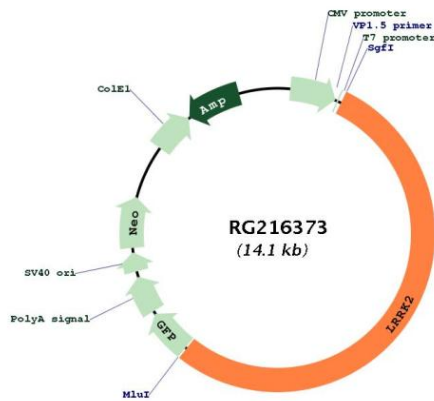
Components: The ORF clone is ion-exchange column purified and shipped in a 2D barcoded Matrix tube containing 10ug of transfection-ready, dried plasmid DNA (reconstitute with 100 ul of water).

- Reconstitution Method:**
1. Centrifuge at 5,000xg for 5min.
 2. Carefully open the tube and add 100ul of sterile water to dissolve the DNA.
 3. Close the tube and incubate for 10 minutes at room temperature.
 4. Briefly vortex the tube and then do a quick spin (less than 5000xg) to concentrate the liquid at the bottom.
 5. Store the suspended plasmid at -20°C. The DNA is stable for at least one year from date of shipping when stored at -20°C.

RefSeq: [NM_198578.2, NP_940980.2](#)
RefSeq Size: 9234 bp
RefSeq ORF: 7584 bp
Locus ID: 120892
UniProt ID: [Q5S007](#)
Cytogenetics: 12q12
Protein Families: Druggable Genome, Protein Kinase
Protein Pathways: Parkinson's disease
Gene Summary:

This gene is a member of the leucine-rich repeat kinase family and encodes a protein with an ankryin repeat region, a leucine-rich repeat (LRR) domain, a kinase domain, a DFG-like motif, a RAS domain, a GTPase domain, a MLK-like domain, and a WD40 domain. The protein is present largely in the cytoplasm but also associates with the mitochondrial outer membrane. Mutations in this gene have been associated with Parkinson disease-8. [provided by RefSeq, Jul 2008]

Product images:



Circular map for RG216373