

## Product datasheet for **RG216354**

### SLC8A2 (NM\_015063) Human Tagged ORF Clone

#### Product data:

Product Type:	Expression Plasmids
Product Name:	SLC8A2 (NM_015063) Human Tagged ORF Clone
Tag:	TurboGFP
Symbol:	SLC8A2
Synonyms:	NCX2
Mammalian Cell Selection:	Neomycin
Vector:	pCMV6-AC-GFP (PS100010)
E. coli Selection:	Ampicillin (100 ug/mL)



[View online »](#)

ORF Nucleotide  
Sequence:

>RG216354 representing NM\_015063  
Red=Cloning site Blue=ORF Green=Tags(s)

TTTTGTAATACGACTCACTATAGGGCGGCCGGGAATTCGTCGACTGGATCCGGTACCGAGGAGATCTGCC  
GCC**CGGATCGCC**

ATGGCTCCCTGGCCTTGGTGGGGTCACTCCTCTGGCGGCTCCCCATGCTCGGGGCAGCCACCC  
CAACCCCTCCCTGCCGCTCCCCGGCCAATGACAGCGACACCAGCACAGGGGGCTGCCAGGGTCTTA  
CCGCTGCCAGCCGGGGTGTGCTGCCCGTGTGGAGCCCGACGACCCGTCGCTGGTGACAAGCGGCA  
CGGGCAGTGGTACTTTGTGGCCATGGTCTACATGTTTCTGGGAGTGTCCATCATCGCCGACCGTTTCA  
TGGCGCCATCGAGGTCATCACGTCAAAGAGAAGGAGATCACCATCACCAAGGCCAACGGTGGAGCCAG  
CGTGGGCACCGTTCGCATCTGGAATGAGACGGTGTCCAACCTCACGCTCATGGCCCTGGGCTCTCCGCA  
CCTGAGATCCTGTGTCAGTATCGAAGTCTGCGGCCACAACCTCCAGGCGGGTGGAGTGGGCCCAGGCA  
CCATCGTGGGCAGCGCTGCCTTCAACATGTTTGGTTCATCGCCGTGTGCATCTACGTCATCCAGCCGG  
CGAGAGCCGCAAGATCAAGCACCTGAGAGTCTTCTTTGTCAGTGCCTCTGGAGCATCTTCGCTATGTC  
TGGCTTTATCTCATCCTTGTGTTTTTCCCCCGTGTGGTCCAGGTGTGGGAGGCGCTGCTGACCCCTGG  
TCTTCTCCCGGTGTGCGTGGTATTTCGCTGGATGGCCGACAAGCGGCTGCTCTTCTACAAGTACGTGTA  
CAAGCGCTACCGACCGACCCACGACGCGGCATCATATAGGCGCCGAGGGCGACCCCCGAAGAGCATC  
GAGCTGGACGGCACGTTTCGTGGGCGCCGAGGCCAGGTGAGTGGGCGGCTGGGCCGGGGCCCCGCCG  
AGGCGCGCAGCTGGACGCCAGCCGCGCGAGGTATCCAGATCCTCAAGGACCTCAAGCAGAAGCACCC  
GGACAAGGATCTGGAGCAGCTGGTGGGCATCGCCAACACTACGCGCTGCTGCACCAGCAGAAGAGCCG  
GCCTTCTACCGCATCCAGGCCACGCGGCTGATGACCGCGCCGGGAACGTGCTGCGCAGACGCGGGCGG  
ACGCTCGCGCAGGGCGGCGCCGAGGGCGGCGAGGACGAAGACGACGCGCCAGCCGATCTT  
CTTCGAGCCTAGCCTCTACCACTGCCTGGAGAACTGCGGCTCCGTGCTGTCCGTACGTCAGTGGCAGGGC  
GGCAGGGCAACAGCACCTTCTACGTGGACTACCGCACTGAGGACGGCTCTGCCAAGCGGGCTCCGACT  
ACGAGTACAGCGAGGGCACGCTGGTGTCAAACCAGGCGAGACGAGAAGGAGTGCATCGGCATCAT  
CGACGACGACATCTTCGAGGAGGACGAGCATTTCTTCGTGCGGCTGCTGAACCTGCGCGTGGGCGACGCG  
CAGGGCATGTTTCGAGCCGACGGCGGGCGGCCAAGGGCGGCTGGTGGCGCCGCTGCTGGCCACCG  
TCACCATCCTGGACGACGACCACGAGGCATCTTCTCCTCCAGGACCGCTGCTGCACGTGAGCGAGTG  
CATGGGCACCGTGGACGTGCGCGTGTGCGCAGCTCGGGCGCGCGCACCGTGCCTTCCCTACCGC  
ACGGTGGACGGCACGGCGCGCGGCGGCGTGCCTACGAGGACGCGTGGGAGAGCTGGAGTTTGGCG  
ACGACGAGACCATGAAAACCTTTCAGGTGAAGATAGTTGATGACGAGGAATATGAGAAAAAGGATAATTT  
CTTCATTGAGCTGGGCCAGCCCCAGTGGCTTAAGCGAGGGATTTAGCTCTGCTACTCAATCAAGGGGAT  
GGGACAGGAAGCTAACAGCCGAGGAGGAGGAGGCTCGGAGGATAGCAGAGATGGGAAGCCAGTCTTGT  
GGGAGAACTGCCGGTGGAGGTATCATCGAGGAGTATATGATTTTAAAGAACACGGTGGATAAACTCAT  
CAAGAAAACGAACCTTGGCCTTGGTAATTGGGACCCATTTCATGGAGGGAGCAGTTTTTAGAGGCAATTACG  
GTGAGCGCAGGGGACGAGGAGGAGGAGGAGGACGGTCCCGGGAGGAGCGGCTGCCGTGCTTTGACT  
ACGTGATGCACCTCCTGACGGTGTCTGGAAGGTGCTCTTCGCTGTGTGCCCCCACCAGTACTGCCA  
CGCTGGGCTGCTTTGGTGTCTCCATCCTGGTTCATCGGCTGCTCACCGCCCTATTGGGGACCTCGCC  
TCCCACCTCGGCTGCACCGTTGGCCTCAAGGACTCTGTCAATGCTGTTGTCTTCTGTTGCCCTGGCACCT  
CCATCCCTGACACGTTCCGACGCAAGGTGGCGGCTGACAGGACAGTGCGCCGACGCGTCCATCGGCAA  
CGTACCAGGCTCCAACGCGGTGAACGTGTTCTTGGCCTGGGCGTGCCTGGTCTGTGGCCGCGTGTAC  
TGGGCGGTGACAGGGCCGCCCTTCGAGGTGCGCACTGGCACGCTGGCCTTCTCCGTACGCTCTTACC  
TCTTCGCTTTCGTGGCATTGCCGTGCTGTACCGGCGCGGCGCACATCGGCGGCGAGTGGGCGG  
CCCGCGGACCAAGCTCGCCACCACCGCTCTTCTGGGCTCTGGCTCTGTACATCTCTTCGCC  
AGCCTGGAGGCGTACTGCCACATCCGGGCTTC

AGCGGACCGACGCGTACGCGGCCGCTCGAG - GFP Tag - GTTTAA

Protein Sequence: >RG216354 representing NM\_015063  
 Red=Cloning site Green=Tags(s)

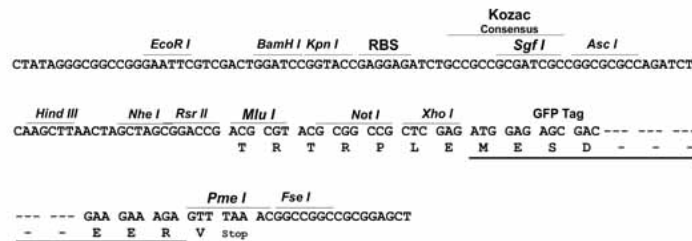
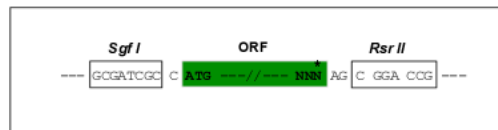
MAPLALVGVTLALLAAPPCSGAATPTPSLPPPPANDSDTSTGGCQGSYRCQPGVLLPVWEPDDPSLGDKAA  
 RAVVYFVAMVYMFVLSIIADRFMAAIEVITSKEKEITITKANGETSVGTVRIWNETVSNLTLMALGSSA  
 PEILLSVIEVCGHNFQAGELGPGTIVGSAFNMFFVIAVCIYVIPAGESRRIKHLRVFFVTASWSIFAYV  
 WLYLILAVFSPGVVQVWEALLTLVFFPVCVVFVFWMADKRLLFYKYVYKRYRTDPRSGIIIGAEGDPPKSI  
 ELDGTFVGAEPGELGGLGPGPAEARELDASRREVIQILKDLKQKHPDKDLEQLVGIANYALLHQKSR  
 AFYRIQATRLMTGAGNVLRRHAADASRRAPAEGAGEDEDDGASRIFFEPVSLYHCLNCGSVLLSVTCQG  
 GEGNSTFYVDYRTEDGSAKAGSDYEYSEGTLVFKPGETQKELRIGIIDDDIFEDEHFFVRLNLRVGD  
 QGMFEPDGGPRPKGRLVAPLLATVTILDDDHAGIFSFDRLHVSECMGTVDVVRVSSGARGTVRLPYR  
 TVDGTARGGGVHYEDACGELEFGDDETMKTLQVKIVDDEEYKKNDFFIELGQPQWLKRGISALLNQG  
 GDRKLTAEERARRIAEMGKPVLENCRLVIEEESYDFKNTVDKLIKTNLALVIGTHSWREQFLEAIT  
 VSAGDEEEEDGSREERLPSCFDYVMHFLTVFWKVLVACVPPTEYCHGWACFVSVILVIGLLTALIGDLA  
 SHFGCTVGLKDSVNAVVFVALGTSIPDTFASKVAALQDQCADASIGNVTGSNAVNVFLGLGVAVSVAAY  
 WAVQGRPFVVRTGLAFSVTLFTVFAFVGIALLVYRRRPHIGGELGGPRGPKLATTALFLGLWLLYILFA  
 SLEAYCHIRGF

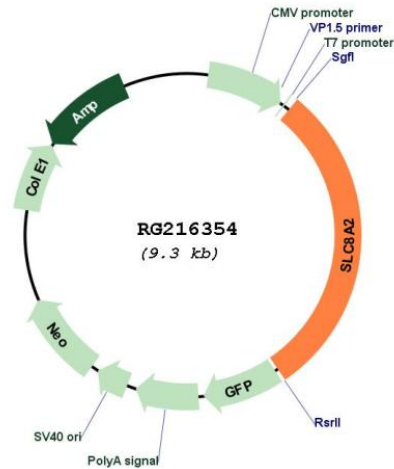
SGPTRRRLE - GFP Tag - V

Restriction Sites: SgfI-RsrII

Cloning Scheme:

Cloning sites used for ORF Shuttling:



**Plasmid Map:**


**ACCN:** NM\_015063

**ORF Size:** 2763 bp

**OTI Disclaimer:** The molecular sequence of this clone aligns with the gene accession number as a point of reference only. However, individual transcript sequences of the same gene can differ through naturally occurring variations (e.g. polymorphisms), each with its own valid existence. This clone is substantially in agreement with the reference, but a complete review of all prevailing variants is recommended prior to use. [More info](#)

**OTI Annotation:** This clone was engineered to express the complete ORF with an expression tag. Expression varies depending on the nature of the gene.

**Components:** The ORF clone is ion-exchange column purified and shipped in a 2D barcoded Matrix tube containing 10ug of transfection-ready, dried plasmid DNA (reconstitute with 100 ul of water).

**Reconstitution Method:**

1. Centrifuge at 5,000xg for 5min.
2. Carefully open the tube and add 100ul of sterile water to dissolve the DNA.
3. Close the tube and incubate for 10 minutes at room temperature.
4. Briefly vortex the tube and then do a quick spin (less than 5000xg) to concentrate the liquid at the bottom.
5. Store the suspended plasmid at -20°C. The DNA is stable for at least one year from date of shipping when stored at -20°C.

**RefSeq:** [NM\\_015063.3](#)

**RefSeq Size:** 4282 bp

**RefSeq ORF:** 2766 bp

**Locus ID:** 6543

**UniProt ID:** [Q9UPR5](#)

**Cytogenetics:** 19q13.32

<b>Protein Families:</b>	Transmembrane
<b>Protein Pathways:</b>	Calcium signaling pathway
<b>Gene Summary:</b>	Mediates the electrogenic exchange of Ca(2+) against Na(+) ions across the cell membrane, and thereby contributes to the regulation of cytoplasmic Ca(2+) levels and Ca(2+)-dependent cellular processes. Contributes to cellular Ca(2+) homeostasis in excitable cells. Contributes to the rapid decrease of cytoplasmic Ca(2+) levels back to baseline after neuronal activation, and thereby contributes to modulate synaptic plasticity, learning and memory. Plays a role in regulating urinary Ca(2+) and Na(+) excretion.[UniProtKB/Swiss-Prot Function]