

Product datasheet for **RG216347**

FBXO43 (NM_001029860) Human Tagged ORF Clone

Product data:

Product Type:	Expression Plasmids
Product Name:	FBXO43 (NM_001029860) Human Tagged ORF Clone
Tag:	TurboGFP
Symbol:	FBXO43
Synonyms:	EMI2; ERP1; FBX43
Mammalian Cell Selection:	Neomycin
Vector:	pCMV6-AC-GFP (PS100010)
E. coli Selection:	Ampicillin (100 ug/mL)



[View online »](#)

ORF Nucleotide
Sequence:

>RG216347 representing NM_001029860
Red=Cloning site Blue=ORF Green=Tags(s)

TTTTGTAATACGACTCACTATAGGGCGGCCGGGAATTCGTCGACTGGATCCGGTACCGAGGAGATCTGCC
GCC**CGCATCGCC**

ATGAGTTTTAAAGACAAAGATGAGAGAATTTCTGTTTGAAGCCTACGTAACCTTGACATCTAAGAGCT
CAAGATTTACTGATGAAACAGAGATTTTGAAGATGTCGCAAAGGCACTCAGGTCAAGCTGGCACTGAAGC
AGGAAATGGGGCGGACTCTCCTCCAATTGTCAACTCCAAGTACTCCACCTTCAGAGATTTTTGTTCCACA
TCTTCATTTCAAGATAGTGGCTACAATGAGTTAAAATCTGTAGCTTTGATAATATAGATAAAGAATATC
TTGGAAAGAAAGAAAAGGCCAACATTACTCTATGAGCACCTGAAACTTCAGGCCTGGGCTTAACACA
TCCTTTAGAATCTCCCACTCAAAAAAGAAATGTATCTTGCTAGAAAGGAAAAGGATAAAACCCAGAA
CTTTGTGAAACACCTAAAATCAGTGGGAAAAATGTTTACCTCGCAGAAGGTTGAATGTATCTTTTCGCTC
TTCTAAAAGGGGACTTTGAATCACAAAATAGTTCTTTAGAAAAGTAGTATAAGCCAAGTTATCAACTAGA
AAAAAATATTCCAAGCAGTGCTTCAGGTTTTCCAGGGCAAATAATTTTAGCCCTTTAGTTACTAGCACT
TAAAAACAGAAGAAGTGACTTCATGCAGTCAAAAATTGAGGCTTAATTTTTCTCAGCAAAAGACTTCCA
CAATTGATGATTCAAAAGATGATTGTAGCCTATTTGAAGTTGAATGTATATCTCCAATTCAGGGCAATAA
TTTTAAAGACTCTATCACACATGACTTTAGTGATAGCAGTTTATGCATTAATGATGAGAATGCATGTCCA
GAGCTCCTGGGCTCCTCTGTTAGTGAACAACCTGTGGAACAGATGAGGACATATTTGTGACTCCGATAA
GTAATCTTGTGGCAAACATTAGATTTAACGCAAGTCAAATACTTTCTCCTCACCTGAAGTGAGAGGCAG
TATTTCAACGCCTGAAGACAGTGGTTTTAACTCACTTAGCTTGGAGAAATCAGAAGATCCCTGTCTGAC
CAGGAGGGTCTTTTCAAGAACTACTGCAGAAACATAAGGGGACTCCCAAAGTTGGGACACCATAAGAA
AGACAAGACATCTTGAAGGTCGAGAAGACTGTCCACCTTCGGGAACAAAGCTCGCAGTCAGAGACAGA
AGAGGAAAAGCAGATTGTCCACCCTGACTCTGAAAAAAGAGCAGCAGCTGCTTCTGCCATCTCAGAGGGT
CAGCTGAGTAGTGATGAGAGTGGGATTTGACCTTTAGCTTAAAGAATTTATCAAAGACCCAGCCTTGC
AATTGGTACATGAGCTGTTTCATGAAAAGCAAGAGGAAAAGATTACAGGAAAATAGTGGACATGAATTCCT
AGAGCAAGGGGATGGGGAGAAAATAGCTGTACTGCAGTGTATACTTGCAGGACTGATCGCAAGAAAATG
GGTATAGAAAACCTGGACATCTAACAGAATAAAATATAGAAAATTTAAAGCATATCTTGCTATGGTTT
TAGAGTCCTTGACCGCAGAGAGCCTATGCAGTGTGGAAAGTAAAGCAGAAATGGCGTGAATTTGTTGT
TCAAGATAAAAAATGCAAATCGGAGGAGGAAATTTATATCACACAACGAAAACAGATTCTGAGGGGGCT
GTATTAATGTGAGGATGCTGCCACTCGGCTCCAGCTTTTAAATCGCTCAGCTTAAAGATCTGTGCAGG
CACAGGCTAGGATACCTGGTTCTCAGAGAGAGCAAGGGTCAACATTATCTCCCTGGGGAGAAGTTTTGAC
ACCTCTAGCAAGCTCTTCTGTTACTCACTTAAGTAGTAAACAGGAAGAATATGTTAAGGTTGCCAAAACA
CTTTTTACTGATGAAGCATTAAACCTTGCCCAAGGTGCCAGTCCCTGTAAAGTACCAGCCATATAAGA
AAAGGGGACTGTGTAGCCGAACAGCCTGTGGTTTTGACTTTTGTGTGTTATGTCTGTGTGCTTATCATGG
GTCTGAAGAATGTAGTAGAGGAGCAGCAAAAGCCAAGAAATAGAAAAGATGCTCTCCAGGAAGTGCCAG
AGTAAGCGGAATTTAAACGCCTC

ACGCGTACGCGGCCGCTCGAG - GFP Tag - GTTTAA

Protein Sequence: >RG216347 representing NM_001029860
 Red=Cloning site Green=Tags(s)

```
MSFKDKDERISCLEAYVTLTSKSSRFTDETEILKMSQRHSGQAGTEAGNGADSPPIVNSKYSTFRDFCST
SSFQDSGYNELKSCSFDNIDKEYLGKKEKGPTLLYHPETSGLGLTHPLESPTQKKKCILPRKEKDKTPE
LCETPKISGKKCLPRRRLNVSFALLKGFESQNSSLESSISQVINLEKNIPSSASGFSRANFSPPLVST
LKTEEVTSCSQKLRNLNFSQOKTSTIDDSKDDCSLFEVECI S P I Q G N N F K D S I T H D F S D S S L C I N D E N A C P
ELLGSSVSGTTCGTDEDIFVTPISNLVANIRFNASQILSPSPEVRSISTPEDSGFNLSLEKSEDSLSD
QEGSFQELLQKHKGTPKVGDTIRKTRHLGRSRLSTLREQSSQSETEEEKQIVHPDSEKRAAAASAISEG
QLSSDESGLTFLSKNL SKTPALQLVHELFMKSKRKRLQENSGHEFLEQGDGEKIAVLQCILAGLIGKKM
GIEKLDILTELKYRNLKHILAMVLESLTAESLCSVWVSRNWREIVVQDKNANRRRKFYITQLKTDSEGA
VLNVEDAATRLQLLNRSALRSVQAQARIPGSQREQGSTLSPWGEVLTPLASSVTHLSSKQEEYVKVAKT
LFTDEALKPCPRCQSPAKYQPYKKRGLCSRTACGFDFCVLCLCAYHGSEECRGAAPRNRKDALPGSAQ
SKRNLKRL
```

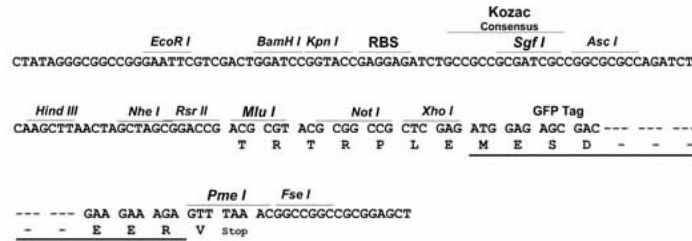
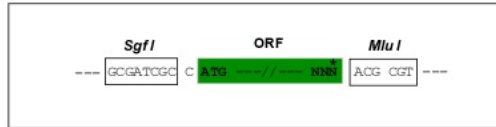
TRTRPLE - GFP Tag - V

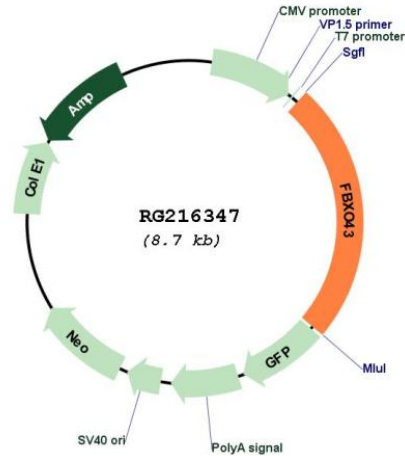
Restriction Sites:

SgfI-MluI

Cloning Scheme:

Cloning sites used for ORF Shutting:



Plasmid Map:


ACCN: NM_001029860

ORF Size: 2124 bp

OTI Disclaimer: The molecular sequence of this clone aligns with the gene accession number as a point of reference only. However, individual transcript sequences of the same gene can differ through naturally occurring variations (e.g. polymorphisms), each with its own valid existence. This clone is substantially in agreement with the reference, but a complete review of all prevailing variants is recommended prior to use. [More info](#)

OTI Annotation: This clone was engineered to express the complete ORF with an expression tag. Expression varies depending on the nature of the gene.

Components: The ORF clone is ion-exchange column purified and shipped in a 2D barcoded Matrix tube containing 10ug of transfection-ready, dried plasmid DNA (reconstitute with 100 ul of water).

Reconstitution Method:

1. Centrifuge at 5,000xg for 5min.
2. Carefully open the tube and add 100ul of sterile water to dissolve the DNA.
3. Close the tube and incubate for 10 minutes at room temperature.
4. Briefly vortex the tube and then do a quick spin (less than 5000xg) to concentrate the liquid at the bottom.
5. Store the suspended plasmid at -20°C. The DNA is stable for at least one year from date of shipping when stored at -20°C.

RefSeq: [NM_001029860.4](#)

RefSeq Size: 3211 bp

RefSeq ORF: 2127 bp

Locus ID: 286151

UniProt ID: [Q4G163](#)

Cytogenetics: 8q22.2

Protein Pathways: Oocyte meiosis

Gene Summary: Members of the F-box protein family, such as FBXO43, are characterized by an approximately 40-amino acid F-box motif. SCF complexes, formed by SKP1 (MIM 601434), cullin (see CUL1; MIM 603134), and F-box proteins, act as protein-ubiquitin ligases. F-box proteins interact with SKP1 through the F box, and they interact with ubiquitination targets through other protein interaction domains (Jin et al., 2004 [PubMed 15520277]).[supplied by OMIM, Mar 2008]