

Product datasheet for **RG216339**

AVL9 (NM_015060) Human Tagged ORF Clone

Product data:

Product Type:	Expression Plasmids
Product Name:	AVL9 (NM_015060) Human Tagged ORF Clone
Tag:	TurboGFP
Symbol:	AVL9
Synonyms:	KIAA0241
Mammalian Cell Selection:	Neomycin
Vector:	pCMV6-AC-GFP (PS100010)
E. coli Selection:	Ampicillin (100 ug/mL)



[View online »](#)

ORF Nucleotide Sequence:

>RG216339 representing NM_015060
 Red=Cloning site Blue=ORF Green=Tags(s)

TTTTGTAATACGACTCACTATAGGGCGGCCGGGAATTCGTCGACTGGATCCGGTACCGAGGAGATCTGCC
 GCC**CGCATCGCC**

ATGGAGAAGGCCAGGAGAGGCGGGGATGGCGTCCCCCGGGGCCCCGTAAGTGCACATCGTGGTGGTGGAT
 TTCACCACAAGAAGGGCTGCCAGGTTGAATTCTCTTACCCGCCCTGATTCCAGGAGATGGACATGACAG
 CCACACTTTACCTGAAGAATGGAAGTATTTGCCCTTCCTTGCCTTACCAGATGGCGCACACAACCTACCAG
 GAAGATACTGTGTTTTTCACTTGCACCCAGAAATGGAATGGAGCCACAGTATTTGGTATCTCTTGCT
 ATCGACAAATTGAAGCCAAGGCACTGAAAGTAAGGCAAGCAGATATCACCAGAGAGACTGTTGAGAAAAG
 TGTCTGTGTTCTAAGCAAGCTGCCTCTGTATGGTTTACTTCAAGCAAACTTCAACTCATTACACATGCA
 TATTTTGAAGAGAAGGATTTTCCCAAATTTCTATTCTAAAGGAGCTTTATGAACATATGAATAGTTCCT
 TGGGAGGTGCTTCATTAGAAGGATCCCAAGTATATCTTGGTCTGTACCTCGAGATCTTGCCTTCATTT
 TCGACACAAGGTCTTAATCCTATTTAAGCTAATCTTCTTGAAGAAAAGGTTCTTTTTTATATTTCTCCA
 GTGAATAAATTTGGTGGGTGCACTGATGACTGTGTTATCCCTTTTTCCAGGCATGATTGAACATGGTCTCA
 GTGACTGTTCTCAGTATAGACCCCGGAAAAGTATGTCTGAAGATGGTGGGCTTCAGGAAAAGTAACCCATG
 TGCAGATGATTTTGTCTGCATCCACTGCTGATGTTTACATACCAACTTGGGAACTATCAGGAAAAGTC
 ATGGCAGGAAACCATGGAGAAGTGTGCCATGAAGACTGAGGAGCCTTTGTTCCAAGTGGAAAGACAGCA
 GCAAAGGGCAGGAACCAATGATACCAATCAATATTTGAAACCTCCATCTCGCCCATCTCCAGATTCTTC
 AGAAAGTGACTGGGAACTTTGGATCCTAGTGTCTTAGAGGACCCCAACTGAAAGAAAGGGAACAGCTG
 GGATCAGACCAGACAAATTTGTTTCCAAGGACTCTGTCCCTCAGAGAGTCTTCCAATTACTGTACAAC
 CTAAGCTAATACGGGACAGGTAGTCTGATACCAGGGCTCATTTCCGGTTTGGAAAGAGGATCAGTATGG
 CATGCCCTGGCCATCTTCAAAAAGGATATCTGTGTTTGCCTTACATGGCATTGCAGCAGCATCATCTT
 CTCTCCGATGTCACCGTTTCGGGGTTTGTGCTGGAGCTACTAACATCCTTTTTCGACAACAGAAAACACC
 TCAGTGTGCCATTGTGGAAGTAGAAGAAGCTCTGATCCAGATCCATGATCCAGAAGTTCAGGAAAGTGT
 TAACCCAACCACTGCAGACCTAAGGTTTCGAGACTACCTAGTGGGACAGTGTGACTGAGAATCGGGATGAC
 GTCTTCTAGATGGCAGGGCTGGGAGGGAGGTGACGAATGGATCCGGGCCAGTTTGGCGTCTACATTC
 ATGCCCTGCTGGTGCACGCTGCAATTAGACAATGAAAAGATATTATCGGACTATGGGACAACCTTTTGT
 TACAGCATGGAAGAATACTCACAACACAGGGTGTGGAACAGCAACAAGCATCCAGCACTGCAGAAATA
 AATCCAAACCATCCATTTCAAGGCAACTACTCAGTATCAGACATGAAGTTAAGGTTCTCACATTCTGTT
 AGAATAGTGAACGTGGCAAAAAAATTTGAAACGTCATGGTCACAACTAGCCGGAATGTTGTACAAACAGG
 AAAAGCTGTTGGCCAGTCAAGTTGGAGGAGCTTTTTCCAGTGCAAAAGACAGCTATGTCTTCATGGCTTTCC
 ACTTTCACCACTCCACCTCCAAAAGTCTCACTGAGCCACCAGATGAGAAGCT

ACGCGTACGCGGGCCGCTCGAG - GFP Tag - GTTTAA

Protein Sequence:

>RG216339 representing NM_015060
 Red=Cloning site Green=Tags(s)

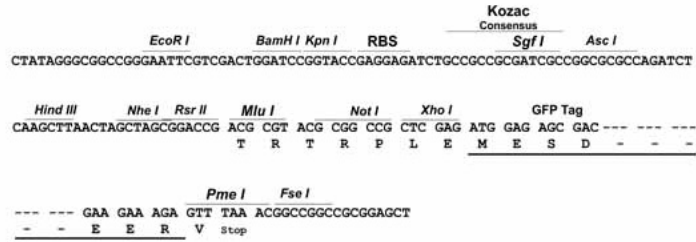
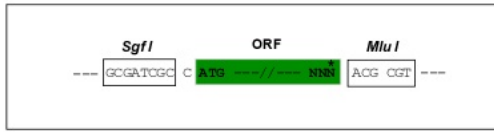
MEKARRGGDGVPRGPVLHIVVVGFHHKKGQVEFSYPLIPGDGHSHTLPEEWKYL PFLALPDGAHNYQ
 EDTVFFHLPPRNGNGATVFGISCYRQIEAKALKVRQADITRETVQKSVCVLSKLPYGLLQAKLQLITHA
 YFEEDKFSQISILKELYEHMNSLGGASLEGSQVYVGLSPRDLVLFHRHKVLI LFKLILLEKKVLFYISP
 VNKL VGALMTVLSLFPGMIEHGLSDCSQYRPRKSMSEGGGLQESNPCADDFVSASTADVSHNLGTRKVK
 MAGNHGEDAAMKTEEPLFQVEDSSKGQEPNDTNQYLPKPSRPSDSESDWETLDPVLEDPNLKEREQL
 GSDQTNLFPKDSVPSESLPITVQPQANTGQVVLIPGLISGLEEDQYGMPLAIFTKGYLCLPYMALQQHHL
 LSDVTVRGFVAGATNILFRQQKHLSDAIVEVEEALIQIHPELRLKLNPTTADLRFADYLVVRHVTEENRDD
 VFLDGTGWEGGDEWIRAQFAVYIHALLAATLQLDNEKILSDYGTTFVTAWKNTHNYRVWVNSNKPALAEI
 NPNHPFQGGQYSVSDMKLRFSSVQNSERGGKIGNVMVTTSRNVVQTGKAVGQSVGGAFSSAKTAMSSWLS
 TFFTSTSQLTEPPDEKP

TRTRPLE - GFP Tag - V

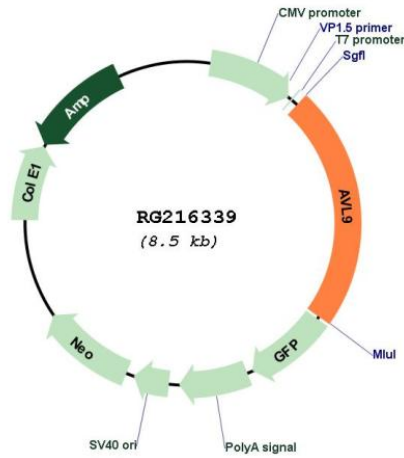
Restriction Sites: SgfI-MluI

Cloning Scheme:

Cloning sites used for ORF Shuttling:



Plasmid Map:



ACCN: NM_015060

ORF Size: 1944 bp

OTI Disclaimer:	The molecular sequence of this clone aligns with the gene accession number as a point of reference only. However, individual transcript sequences of the same gene can differ through naturally occurring variations (e.g. polymorphisms), each with its own valid existence. This clone is substantially in agreement with the reference, but a complete review of all prevailing variants is recommended prior to use. More info
OTI Annotation:	This clone was engineered to express the complete ORF with an expression tag. Expression varies depending on the nature of the gene.
Components:	The ORF clone is ion-exchange column purified and shipped in a 2D barcoded Matrix tube containing 10ug of transfection-ready, dried plasmid DNA (reconstitute with 100 ul of water).
Reconstitution Method:	<ol style="list-style-type: none">1. Centrifuge at 5,000xg for 5min.2. Carefully open the tube and add 100ul of sterile water to dissolve the DNA.3. Close the tube and incubate for 10 minutes at room temperature.4. Briefly vortex the tube and then do a quick spin (less than 5000xg) to concentrate the liquid at the bottom.5. Store the suspended plasmid at -20°C. The DNA is stable for at least one year from date of shipping when stored at -20°C.
RefSeq:	NM_015060.1 , NP_055875.1
RefSeq Size:	2353 bp
RefSeq ORF:	1947 bp
Locus ID:	23080
UniProt ID:	Q8NBF6
Cytogenetics:	7p14.3
Gene Summary:	Functions in cell migration.[UniProtKB/Swiss-Prot Function]