

Product datasheet for **RG216316**

FUT7 (NM_004479) Human Tagged ORF Clone

Product data:

Product Type: Expression Plasmids
Product Name: FUT7 (NM_004479) Human Tagged ORF Clone
Tag: TurboGFP
Symbol: FUT7
Synonyms: FucT-VII
Mammalian Cell Selection: Neomycin
Vector: pCMV6-AC-GFP (PS100010)
E. coli Selection: Ampicillin (100 ug/mL)
ORF Nucleotide Sequence: >RG216316 representing NM_004479
Red=Cloning site Blue=ORF Green=Tags(s)

TTTTGTAATACGACTCACTATAGGGCGGCCGGAATTCGTCGACTGGATCCGGTACCGAGGAGATCTGCC
GCC**CGATCGCC**

ATGAATAATGCTGGGCACGGCCCCACCCGGAGGCTGCGAGGCTTGGGGTCTGGCCGGGTGGCTCTGC
TCGCTGCCCTCTGGCTCCTGTGGCTGCTGGGGTCAGCCCTCGGGTACCCGGCACCCAGCCACGAT
CACCATCCTTGTCTGGCACTGGCCCTTCACTGACCAGCCCCAGAGCTGCCAGCGACACCTGCACCCGC
TACGGCATCGCCGCTGCCACCTGAGTGCCAACCGAAGCCTGCTGGCCAGCGCCGACGCCGTGGTCTTCC
ACCACCGGAGCTGCAGACCCGGCGGTCCACCTGCCCTGGCCAGCGCCGCGAGGGCAGCCCTGGGT
GTGGGCCCTCCATGGAGTCTCCTAGCCACACCCAGGCCTCAGCCACCTCCGAGGCATCTTCAACTGGGTG
CTGAGCTACCGGCGGACTCGGACATCTTTGTGCCCTATGGCCGCTGGAGCCCCACTGGGGCCCTCGC
CACCGCTGCCAGCCAAGAGCAGGGTGGCCGCTGGGTGGTCACTTCCAGGAGCGGCAGCTGCGTGC
CAGGCTGTACCGGAGCTGGCGCCTCATCTGCGGGTGGATGTCTTTGGCCGTGCCAATGGACGGCCACTG
TGCGCCAGCTGCCTGGTGGCCACCGTGGCCAGTACCGCTTCTACCTGTCTTTGAGAACTCTCAGCACC
GCGACTACATTACGGAGAAATCTGGCGCAACGCACTGGTGGCTGGCACTGTGCCAGTGGTGTGGGGCC
CCCACGGGCCACCTATGAGGCCCTTCTGTCGGCTGACGCCCTTCTGTGCATGTGGATGACTTTGGCTCAGCC
CGAGAGCTGGCGGCTTTCTCACTGGCATGAATGAGAGCCGATACCAACGCTTCTTTGCCCTGGCGTGACA
GGCTCCGCGTGGCACTGTTACCGACTGGCGGGAACGTTTCTGTGCCATCTGTGACCGCTACCCACACCT
ACCCCGCAGCAAGTCTATGAGGACCTTGAGGGTTGTTTCAGGCC

ACGCGTACGCGGCCGCTCGAG - GFP Tag - GTTTAA



[View online »](#)

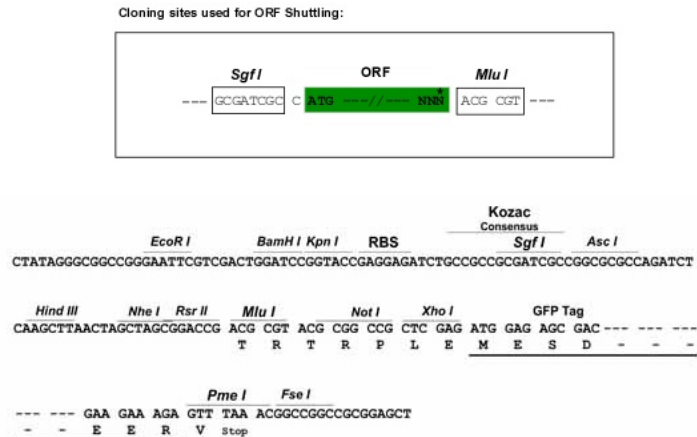
Protein Sequence: >RG216316 representing NM_004479
Red=Cloning site Green=Tags(s)

MNNAGHGPTRRRLRGLGVLAVALLAALWLLWLLGSAPRGTPAPQPTITILVWHWPFTDQPPELPSDTCTR
 YGIARCHLSANRSLASADAVVHHRELQTRRSHLPLAQRPRGQPWWASMESPSHTHGLSHLRGIFNWV
 LSYRRDSDIFVPYGRLEPHWGPSPLPAKSRVAWVVSNFQERQLRARLYRQLAPHLRVDVFGRANGRPL
 CASCLVPTVAQYRFYLSFENSQHRDYITEKFWRNALVAGTVPVVLGPPRATYEAFVPADAFVHVDDFGSA
 RELAAFLTGMNESRYQRFFAWRDRLRVRLFTDWRERFCAICDRYPHLPRSQVYEDLEGWFQA

TRTRPLE - GFP Tag - V

Restriction Sites: SgfI-MluI

Cloning Scheme:



ACCN: NM_004479

ORF Size: 1026 bp

OTI Disclaimer: The molecular sequence of this clone aligns with the gene accession number as a point of reference only. However, individual transcript sequences of the same gene can differ through naturally occurring variations (e.g. polymorphisms), each with its own valid existence. This clone is substantially in agreement with the reference, but a complete review of all prevailing variants is recommended prior to use. [More info](#)

OTI Annotation: This clone was engineered to express the complete ORF with an expression tag. Expression varies depending on the nature of the gene.

Components: The ORF clone is ion-exchange column purified and shipped in a 2D barcoded Matrix tube containing 10ug of transfection-ready, dried plasmid DNA (reconstitute with 100 ul of water).

Reconstitution Method:

1. Centrifuge at 5,000xg for 5min.
2. Carefully open the tube and add 100ul of sterile water to dissolve the DNA.
3. Close the tube and incubate for 10 minutes at room temperature.
4. Briefly vortex the tube and then do a quick spin (less than 5000xg) to concentrate the liquid at the bottom.
5. Store the suspended plasmid at -20°C. The DNA is stable for at least one year from date of shipping when stored at -20°C.

RefSeq: [NM_004479.4](#)

RefSeq Size: 2598 bp

RefSeq ORF: 1029 bp

Locus ID: 2529

UniProt ID: [Q11130](#)

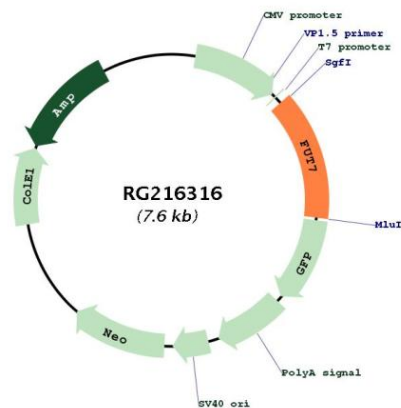
Cytogenetics: 9q34.3

Protein Families: Transmembrane

Protein Pathways: Glycosphingolipid biosynthesis - lacto and neolacto series

Gene Summary: The protein encoded by this gene is a Golgi stack membrane protein that is involved in the creation of sialyl-Lewis X antigens. The encoded protein can direct the synthesis of the E-selectin-binding sialyl-Lewis X moiety. [provided by RefSeq, Jul 2008]

Product images:



Circular map for RG216316